

City Line Plaza

±2,694 - 20,000 SF Available For Lease

2005 City Line Road
Bethlehem, PA 18017
www.cbre.com/allentown



Features

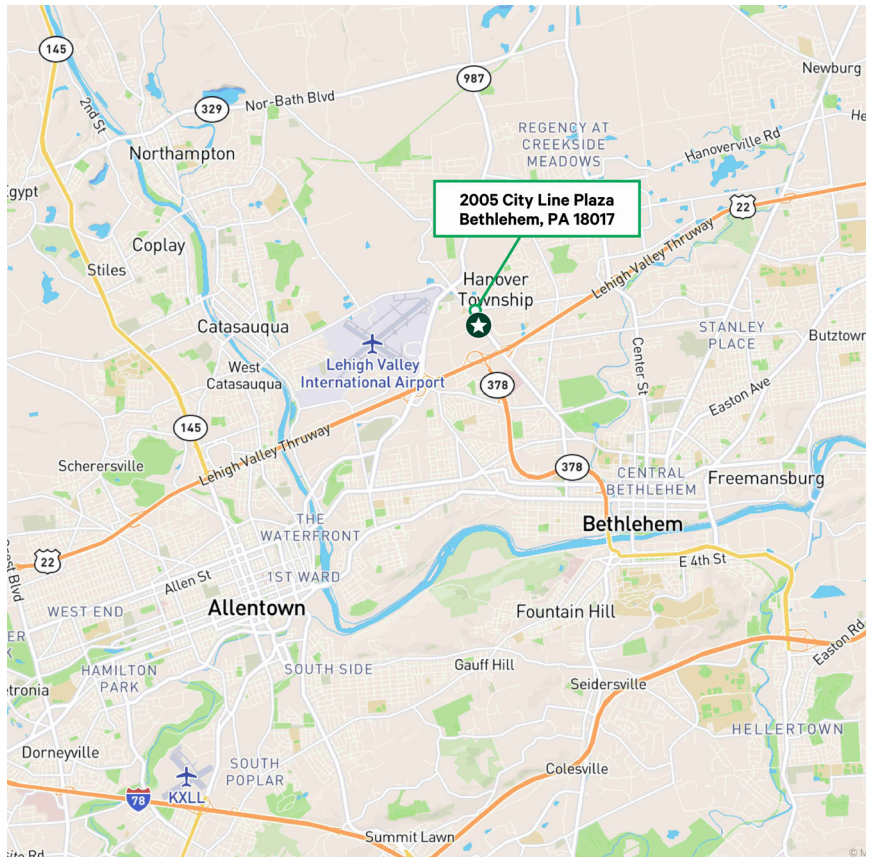
- + 2005 City Line Road is an ±65,000 SF three story Class 'A' Office Building.
- + Centrally located in the heart of the Lehigh Valley, just off of Schoenersville Road. Easily accessible to Route 22 and 378.
- + ±2,694 SF office space available on the first floor
- + ±10,000 SF office space available on the third floor
- + ±10,000 SF annex available
- + Ample on-site parking
- + Bank available on-site, with circular ground floor lobby. Many retail and restaurants within walking distance.

City Line Plaza

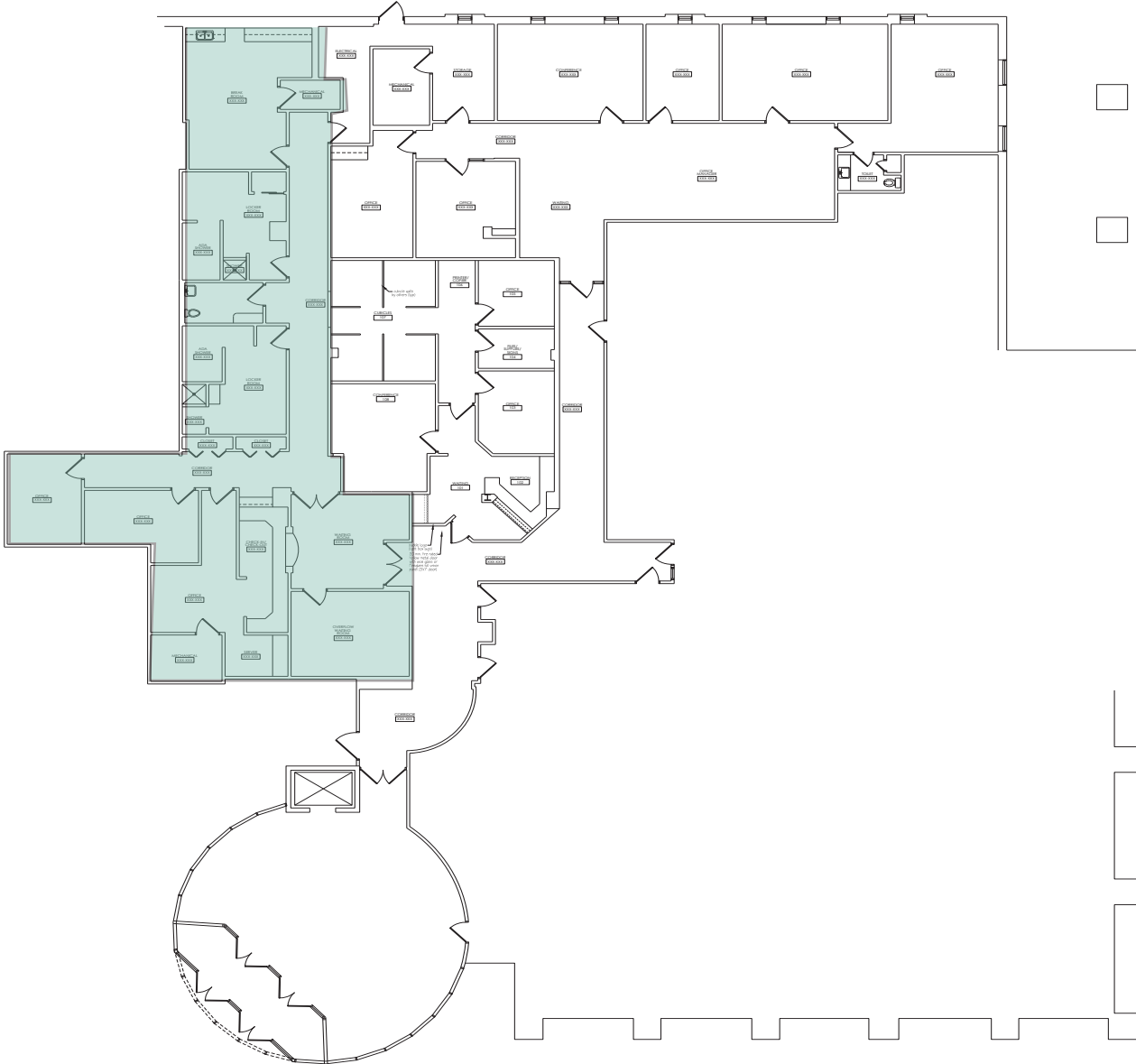
2005 City Line Plaza | Bethlehem, PA 18017

For Lease

Building Photos



First Floor - 2,694 SF Available



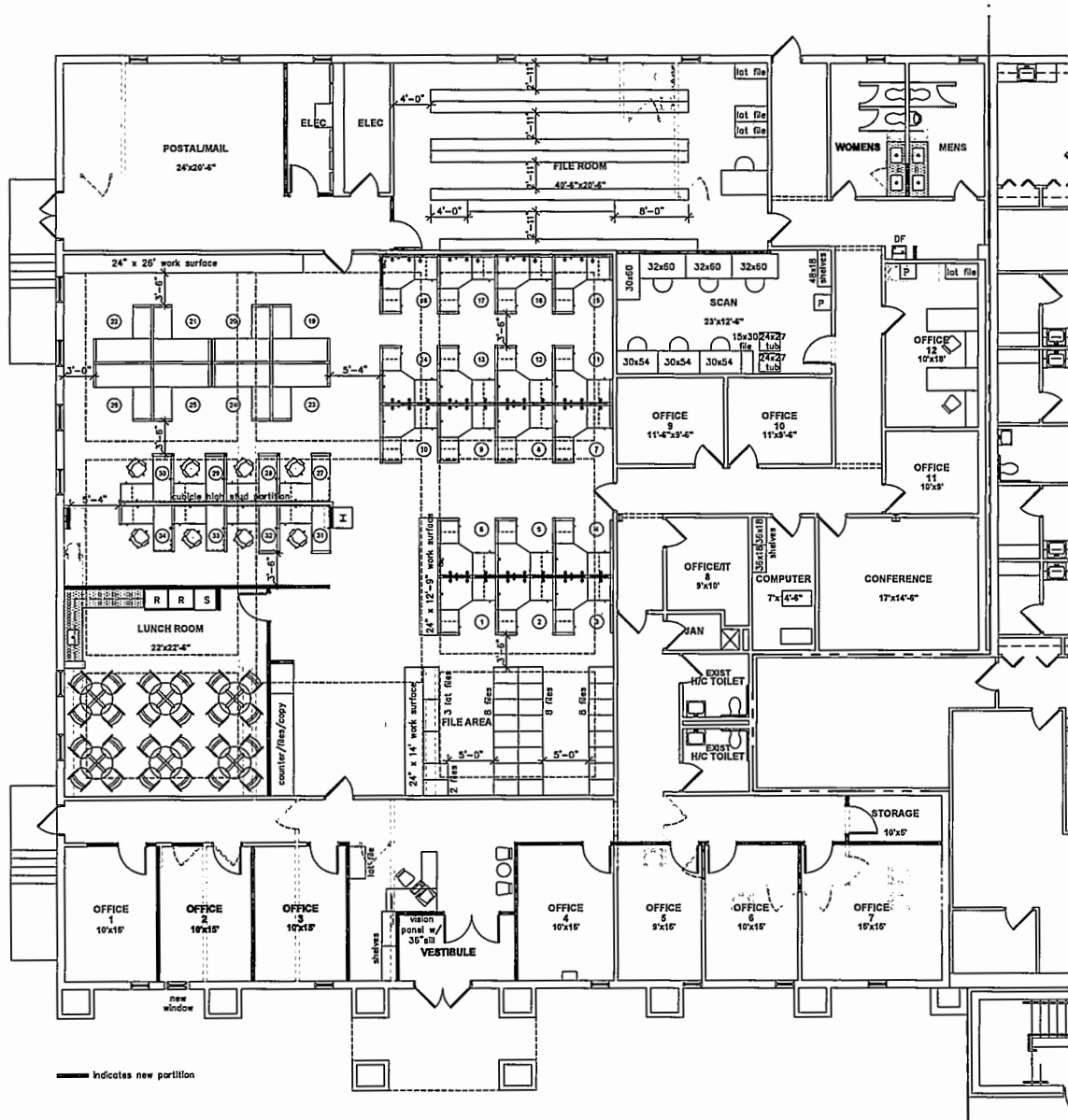
© 2025 CBRE, Inc. All rights reserved. This information has been obtained from sources believed reliable, but has not been verified for accuracy or completeness. You should conduct a careful, independent investigation of the property and verify all information. Any reliance on this information is solely at your own risk. CBRE and the CBRE logo are service marks of CBRE, Inc. All other marks displayed on this document are the property of their respective owners, and the use of such logos does not imply any affiliation with or endorsement of CBRE. Photos herein are the property of their respective owners. Use of these images without the express written consent of the owner is prohibited.

Third Floor - 10,000 SF Available



© 2025 CBRE, Inc. All rights reserved. This information has been obtained from sources believed reliable, but has not been verified for accuracy or completeness. You should conduct a careful, independent investigation of the property and verify all information. Any reliance on this information is solely at your own risk. CBRE and the CBRE logo are service marks of CBRE, Inc. All other marks displayed on this document are the property of their respective owners, and the use of such logos does not imply any affiliation with or endorsement of CBRE. Photos herein are the property of their respective owners. Use of these images without the express written consent of the owner is prohibited.

Annex - 10,000 SF Available



Contact Us

Jody King

Senior Vice President

+1 610 398 3384

jody.king@cbre.com

Licensed: PA

Pam Hall

Associate

+1 610 573 5341

pamela.hall@cbre.com

Licensed: PA

CBRE, Inc.

1275 Glenlivet Drive

Allentown, PA 18106

+1 610 398 6900

Licensed Real Estate Broker

© 2025 CBRE, Inc. All rights reserved. This information has been obtained from sources believed reliable, but has not been verified for accuracy or completeness. You should conduct a careful, independent investigation of the property and verify all information. Any reliance on this information is solely at your own risk. CBRE and the CBRE logo are service marks of CBRE, Inc. All other marks displayed on this document are the property of their respective owners, and the use of such logos does not imply any affiliation with or endorsement of CBRE. Photos herein are the property of their respective owners. Use of these images without the express written consent of the owner is prohibited.



Contact Us

Jody King

Senior Vice President

+1 610 398 3384

jody.king@cbre.com

Licensed: PA

Pam Hall

Associate

+1 610 573 5341

pamela.hall@cbre.com

Licensed: PA

CBRE, Inc.

1275 Glenlivet Drive

Allentown, PA 18106

+1 610 398 6900

Licensed Real Estate Broker

© 2025 CBRE, Inc. All rights reserved. This information has been obtained from sources believed reliable, but has not been verified for accuracy or completeness. You should conduct a careful, independent investigation of the property and verify all information. Any reliance on this information is solely at your own risk. CBRE and the CBRE logo are service marks of CBRE, Inc. All other marks displayed on this document are the property of their respective owners, and the use of such logos does not imply any affiliation with or endorsement of CBRE. Photos herein are the property of their respective owners. Use of these images without the express written consent of the owner is prohibited.