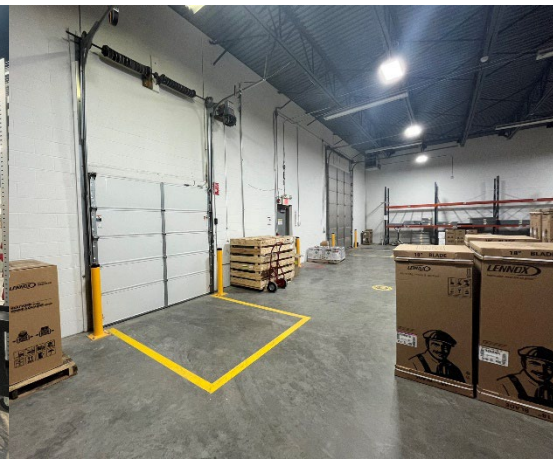
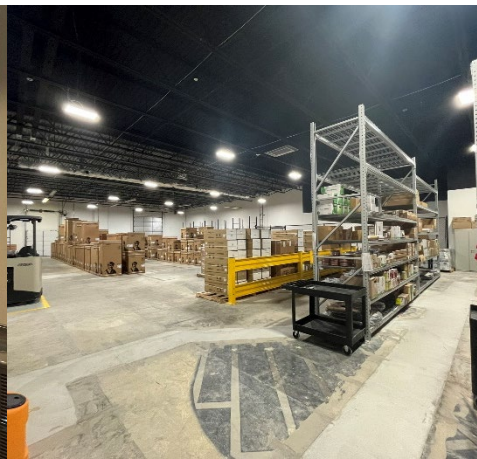
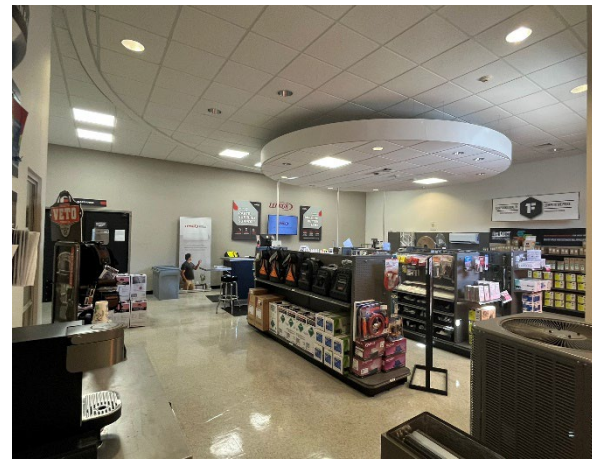


For Lease – Warwick, R.I.

Metro Center Boulevard

Prime Warehouse, Showroom and/or Office Space
10,000 SF



- Loading dock and drive in door
- 16'6" of free and clear space
- 100+ off street parking spaces
- Fully air conditioned

- Convenient to T.F. Green Airport and I-95
- 100+ off street parking spaces
- Fully air conditioned
- 3 phase power



Stephen G. Soccia
(401) 821-0700
steve@mutualprop.com
www.mutualprop.com