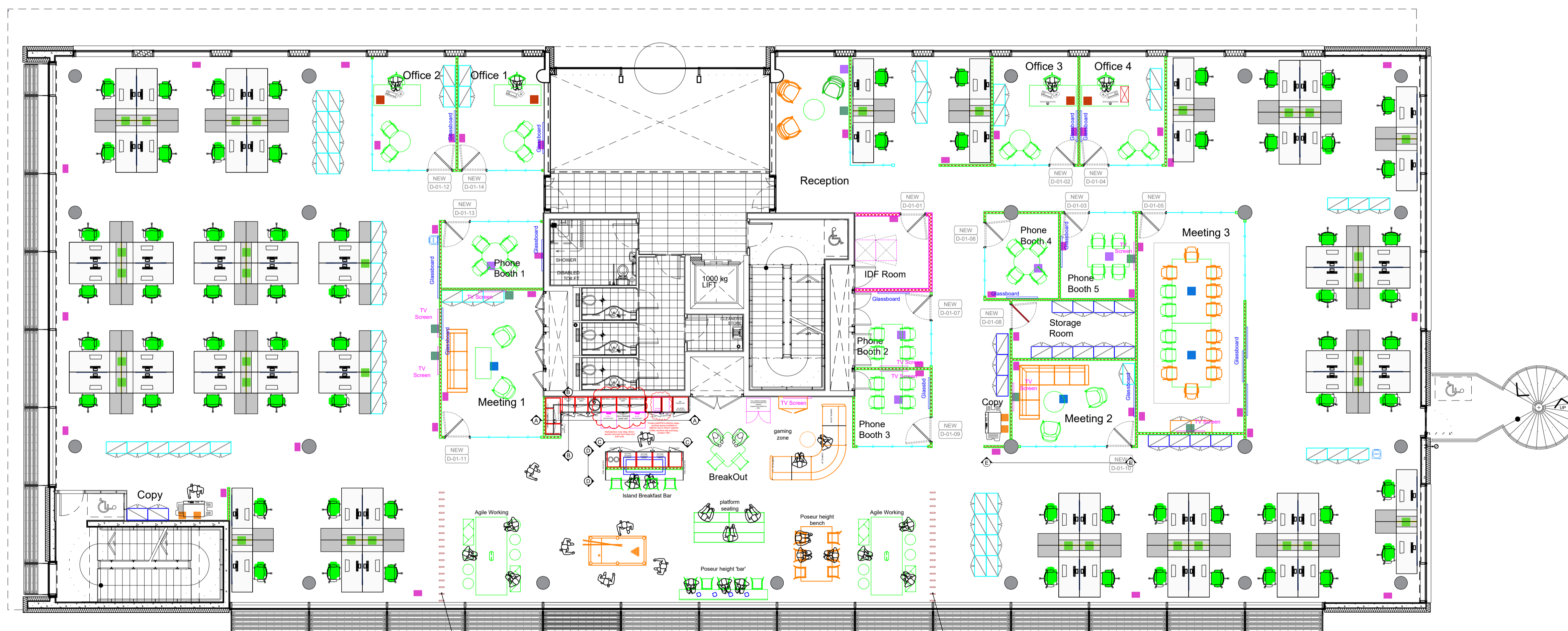


All dimensions must be checked on site

- All furniture in Orange to be relocated from existing Office
- All furniture in Green to be new
- All Storage in Blue to be new full height storewall @ 800W
- All Storage in Aqua to be new 1200H & 800W



Full height Upholstered Acoustic Blades. 17 x Blades illustrated @ 30mm x200mm. Typically set out at 260mm centres

Full height Upholstered Acoustic Blades. 17 x Blades illustrated @ 30mm x200mm. Typically set out at 260mm centres

Rev	Revision	By	Date	Chk'd	Date
M	Dishwashers changed to integrated, remove decor panels (walls and base) and change 300 base unit to a 400 base unit. Remove upstand. Change of worktop finish.	KL			15/10/18
L	Remove worktop microwave and place back in larder unit. Draw coffee machine real size - will overhang worktop (location TBC). Replace 600 base unit in Breakfast bar with 600 free standing fridge.	KL			04/10/18
K	Remove american fridge freezer. Remove free standing coffee machine and replace with full height double door glass bottle fridge. Remove drainer to have single round sink. Move larder unit down, add additional base unit/under counter fridge. Relocate worktop coffee machine - add 1000 wall unit in its place. Replace bottle fridges in breakfast bar with 1no fridge and freezer.	KL			26/09/18
J	Locations of glassboards and TVs added. Change swing of 1no drinks fridge under breakfast bar.	KL			24/09/18
I	Revisions to Tea Point appliances, and wall units. Add in coffee machines. Change lighting over breakfast bar, and revise units underneath. Add 2no water coolers.	KL			18/09/18
H	Revisions to Tea Point appliances	KL			03/09/18
G	Minor Revisions & add platform seating to Break Out	KL			16/08/18
F	Revisions to meeting/phone rooms	KL			24/07/18
E	Option 3 Layout - Revert to Josef layout	KL			19/07/18
D	Option 3 Layout	KL			17/07/18
C	Revisions to Breakfast Bar Cabinets	KL			13/07/18
B	Revisions to Breakfast Bar Layout	KL			12/07/18
A	First draft	KL			03/07/18



BULB INTERIORS, PRIORY COURT, WOOD LA NE BEECH HILL, BERKSHIRE RG7 2BJ  
T: 01189 889200 F: 01189 889350  
www.bulbinteriors.com

Client  
Synopsis

Project  
1430 Arlington Business Park  
Theale  
Berkshire

Title  
First Floor Break Out  
General Arrangement

Scale	Date	Designer/Drawn By	Checked By / Date
1:100@A1	03.07.18	KL	-

Project No.	Drawing No.	Floor	Detail	Rev
P17103		01	GA	M

# Proposed First Floor Layout

## All appliances to be supplied and installed by Bulb

Signature: \_\_\_\_\_