



Pine Street / RPS



ST. JOHNS BUSINESS PARK

St. Johns Business Park, located at 11233 St Johns Industrial Parkway, Jacksonville, FL 32246. This premier business park features six versatile buildings, designed to accommodate a wide range of business needs. The business park is ideal for light industrial, warehousing, distribution, and office use, with ample parking and easy access for large vehicles.



ZONING

IBP



SPACE SIZE

1,130 - 7,200± SF



LOADING

Dock-high



CEILING HEIGHT

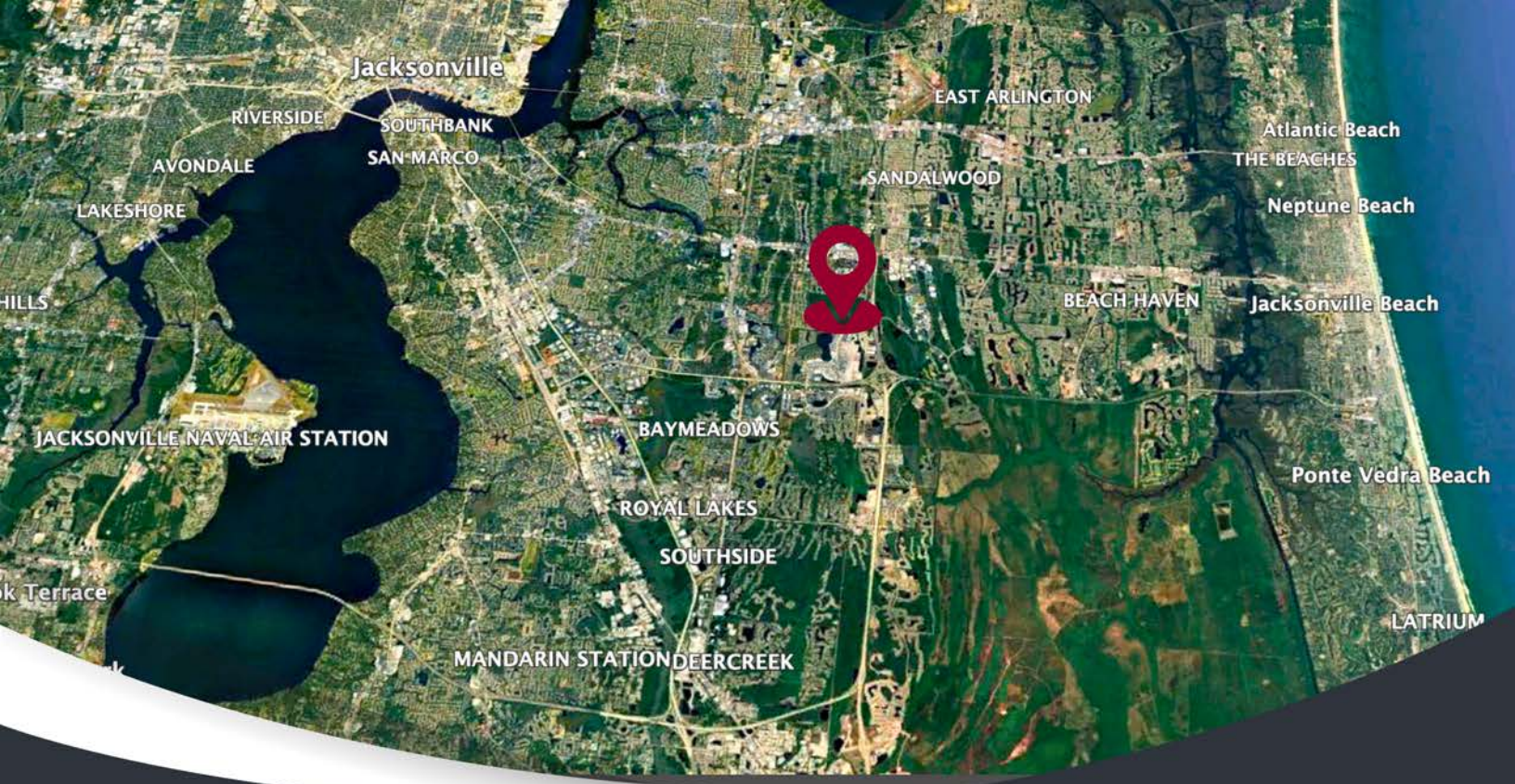
12'-18'

Mark Wainwright

Mark@psrps.com | (904) 728-1085

Summer Wainwright

Summer@psrps.com | (904) 728-1085



11222 ST. JOHNS INDUSTRIAL BLVD



11232 ST. JOHNS INDUSTRIAL BLVD



11233 ST. JOHNS INDUSTRIAL BLVD



11233 ST. JOHNS INDUSTRIAL BLVD



11243 ST. JOHNS INDUSTRIAL BLVD



11290 ST. JOHNS INDUSTRIAL BLVD

CONTACT US



904.398.1044



INFO@PSRPS.COM