

Newhall Retail Center

22420 Third Street, Newhall, CA 91321

For Lease

Retail Spaces



Demographics	Avg. HH Income	Population
Within 3 Miles:	\$136,032	56,761
Within 5 Miles:	\$140,815	162,174



Pamela Verner
Broker
661.714.5271
DRE Lic #01815191
pamela@scvcommercial.com

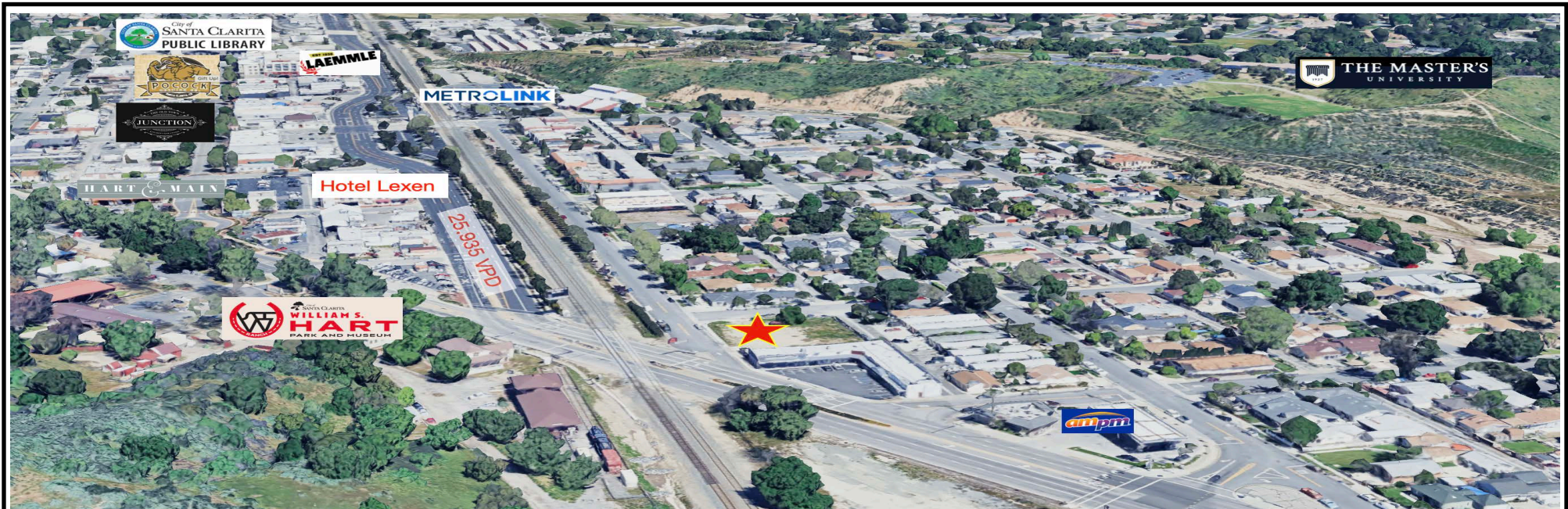
Disclaimer: No warranty, express or implied, is made as to the accuracy of the information contained herein. This information is submitted subject to errors, omissions, change of price, rental or other conditions, withdrawal without notice, and is subject to any special listing conditions imposed by our principals. Cooperating brokers, buyers, tenants and other parties who receive this document should not rely on it, but should use it as a starting point of analysis, and should independently confirm the accuracy of the information contained herein through a due diligence review of the books, records, files and documents that constitute reliable sources of the information described herein. SCV Commercial Real Estate Lic #01523815

Newhall Retail Center

24420 Third Street, Newhall, CA 91321

For Lease

Retail Spaces



PROPERTY INFORMATION

- Under Construction. Estimated completion early Q4 2026.
 - 6,000 sf building on approx. 20,000 sf lot.
 - Located blocks from the Metrolink station.
 - 16 parking spaces. 4 EV charging stations.
 - Units from 1,500 sf - 6,000 sf.
 - \$2.25-\$2.50 sf NNN
- .5 miles from the Newhall Metrolink Station and Newhall Community Center
 - 1.5 miles from Antelope Valley 14 Freeway.
 - .5 miles from Downtown Newhall's Main Street
 - Traffic volume on adjacent Newhall Avenue is approx. 43,310 VPD.



Pamela Verner
Broker
661.714.5271
DRE Lic #01815191
pamela@scvcommercial.com

Disclaimer: No warranty, express or implied, is made as to the accuracy of the information contained herein. This information is submitted subject to errors, omissions, change of price, rental or other conditions, withdrawal without notice, and is subject to any special listing conditions imposed by our principals. Cooperating brokers, buyers, tenants and other parties who receive this document should not rely on it, but should use it as a starting point of analysis, and should independently confirm the accuracy of the information contained herein through a due diligence review of the books, records, files and documents that constitute reliable sources of the information described herein. SCV Commercial Real Estate Lic #01523815

Newhall Retail Center

24420 Third Street, Newhall, CA 91321

For Lease

Retail Spaces



Pamela Verner
Broker
661.714.5271
DRE Lic #01815191
pamela@scvcommercial.com

Disclaimer: No warranty, express or implied, is made as to the accuracy of the information contained herein. This information is submitted subject to errors, omissions, change of price, rental or other conditions, withdrawal without notice, and is subject to any special listing conditions imposed by our principals. Cooperating brokers, buyers, tenants and other parties who receive this document should not rely on it, but should use it as a starting point of analysis, and should independently confirm the accuracy of the information contained herein through a due diligence review of the books, records, files and documents that constitute reliable sources of the information described herein. SCV Commercial Real Estate Lic #01523815

