

795 & 797

San Antonio Road

PALO ALTO, CALIFORNIA

$\pm 6,800 + 4,200 = 11,000$ SF Flex / Office R&D

CAN BE LEASED TOGETHER OR SEPARATE

795 (6,800 SF)

797 (4,200 SF)



STETSON EARHART

FOR MORE INFORMATION, CONTACT:

CHAD MARTIN

Senior Director

650.815.9851

Chad.Martin@StetsonEarhart.com

CA-DRE LIC #02106951

BRAD MARTIN

Managing Director

408.828.4806

Brad.Martin@StetsonEarhart.com

CA-DRE LIC #00867650

**BOTH BUILDINGS
AVAILABLE!**



FREEWAY ACCESS



GREAT VISIBILITY



PARKING ON-SITE

795 & 797

San Antonio Road

PALO ALTO, CALIFORNIA



BUILDING HIGHLIGHTS



(2) Buildings
±11,000 SF Available
Divisible (6,800 & 4,200 SF)



High-Visibility Exposure
Located On A Main
Traveled Street



Restaurants Nearby and
Next-door



Improvements
Available



Skylights Allowing
Natural Light



Prominent
Building Signage



Roll-up Door



Parking Onsite

797

San Antonio Road
PALO ALTO, CALIFORNIA

BUILDING PHOTOS

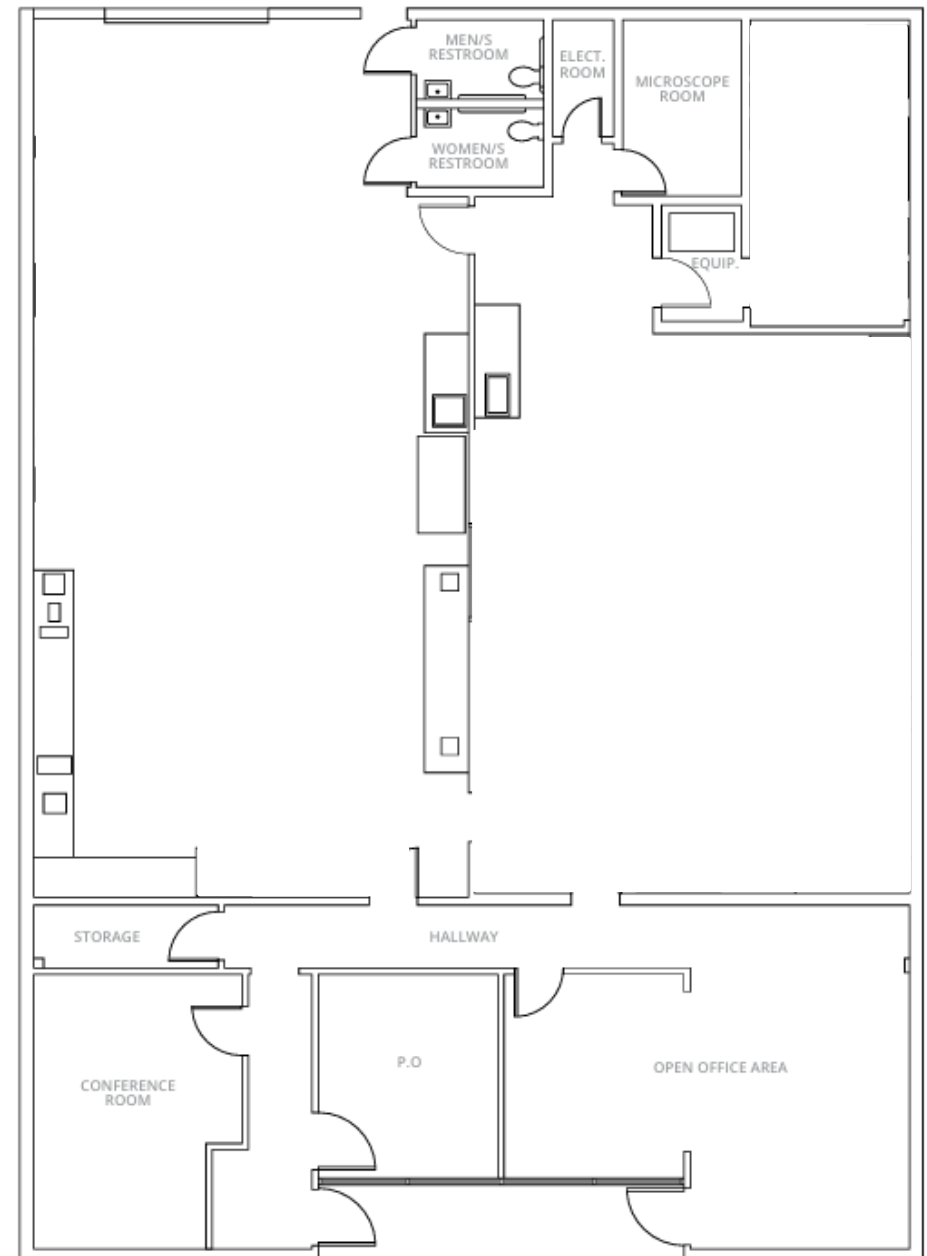


797 San Antonio

- +/- 4,200 SF
- 200 Amps / 220V
- (2) Large Open R&D / Flex Space
- (1) Private Office
- (1) Conference Room
- Open Office Area / Lobby
- Roll-Up Door (Grade Level)
- Skylights For Natural Light



Offices And Walls Can Be Removed



795

San Antonio Road
PALO ALTO, CALIFORNIA



BUILDING PHOTOS

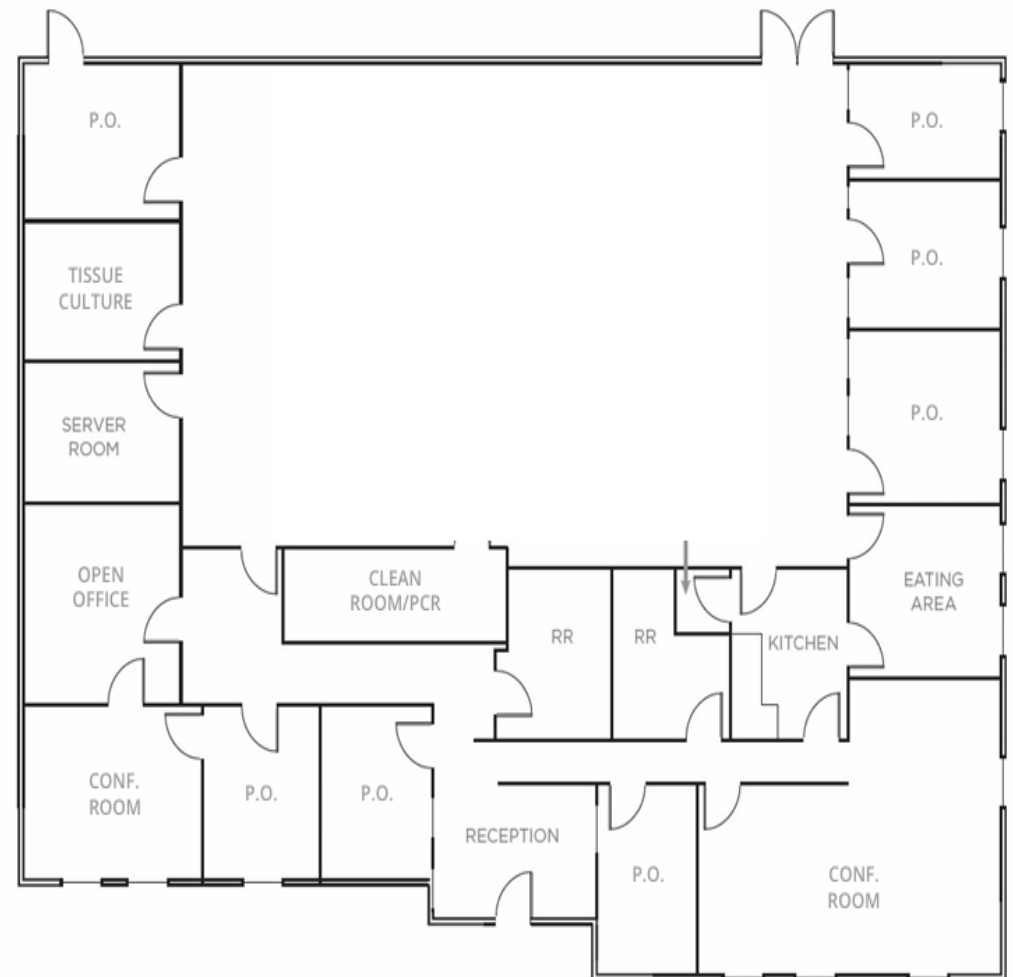


795 San Antonio

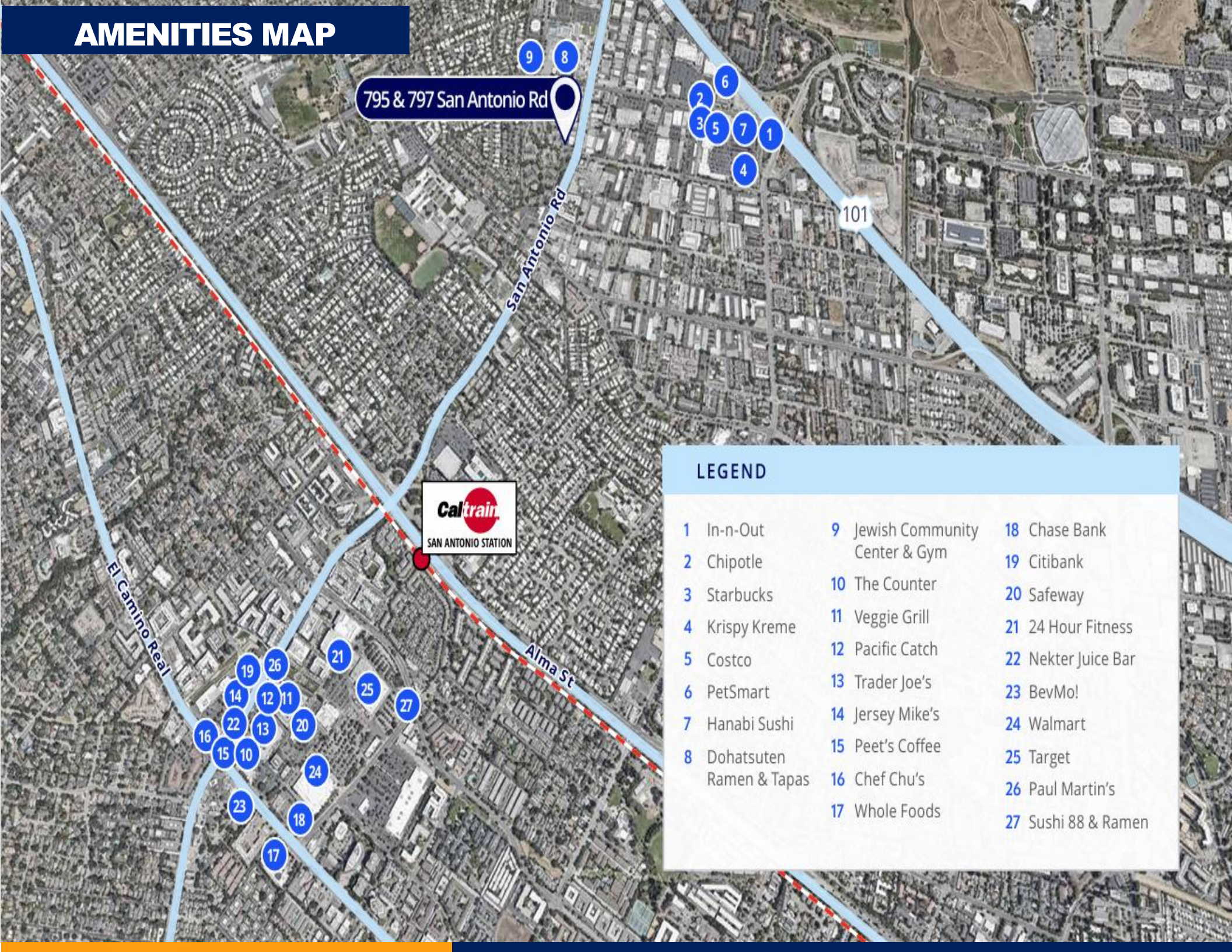
- +/- 6,800 SF
- 400 Amps / 220 V
- Large Open Lab / Flex Space
- (1) Clean Room
- (1) Server Room
- (1) Large Conference Room
- Open Office Area / Lobby
- Double Door
- (7) Private Offices



Offices Can Be Removed



AMENITIES MAP



795 & 797 San Antonio Rd



LEGEND

- | | | |
|----------------------------|---------------------------------|---------------------|
| 1 In-n-Out | 9 Jewish Community Center & Gym | 18 Chase Bank |
| 2 Chipotle | 10 The Counter | 19 Citibank |
| 3 Starbucks | 11 Veggie Grill | 20 Safeway |
| 4 Krispy Kreme | 12 Pacific Catch | 21 24 Hour Fitness |
| 5 Costco | 13 Trader Joe's | 22 Nekter Juice Bar |
| 6 PetSmart | 14 Jersey Mike's | 23 BevMo! |
| 7 Hanabi Sushi | 15 Peet's Coffee | 24 Walmart |
| 8 Dohatsuten Ramen & Tapas | 16 Chef Chu's | 25 Target |
| | 17 Whole Foods | 26 Paul Martin's |
| | | 27 Sushi 88 & Ramen |

795 & 797

San Antonio Road

PALO ALTO, CALIFORNIA



FOR MORE INFORMATION, CONTACT:

CHAD MARTIN
Senior Director
+1 650.815.9851
Chad.Martin@StetsonEarhart.com
CA-DRE LIC #02106951

BRAD MARTIN
Managing Director
+1 408.828.4806
Brad.Martin@StetsonEarhart.com
CA-DRE LIC #00867650



260 Sheridan Ave, Ste 130
Palo Alto, California 94306
Main +1 650.651.3690
StetsonEarhart.com