

435

MAG
REALTY ASSOCIATES

Knickerbocker Avenue, Bushwick

(Corner of Harman Street and Knickerbocker Avenue)





SIZE:

Ground: APPROX 12,000 SF
Lower Level: APPROX 10,000 SF
Storage Basement APPROX 2,000 SF

WRAP AROUND FRONTAGE:

APPROX 125' FEET

CEILING HEIGHTS:

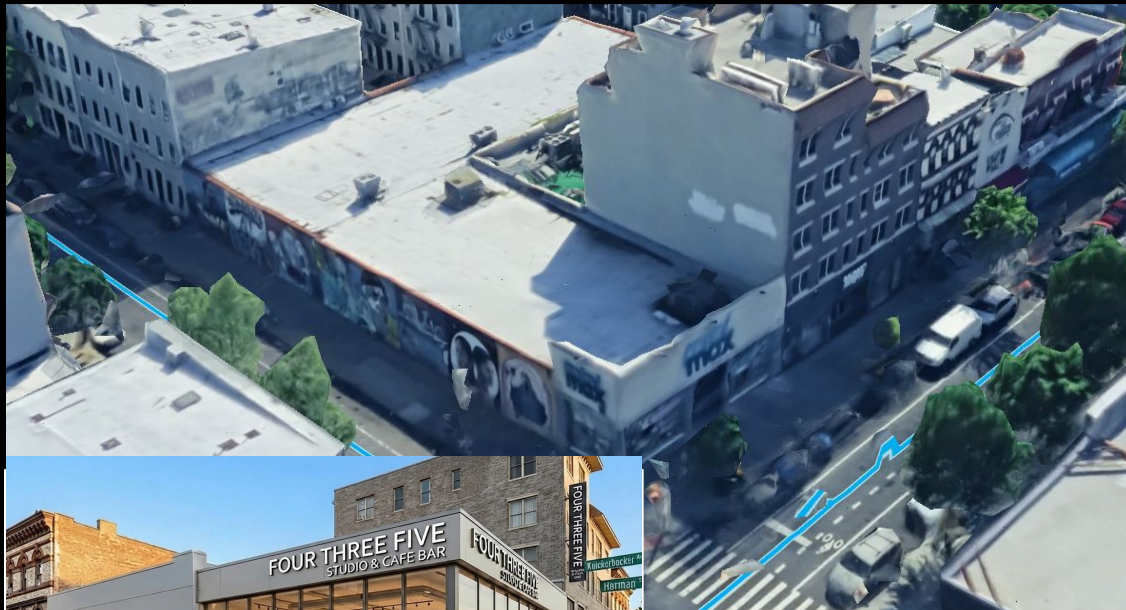
GROUND APPROX 15' FEET
LOWER LEVEL SPACE 9'-10' FEET

POSSESSION:

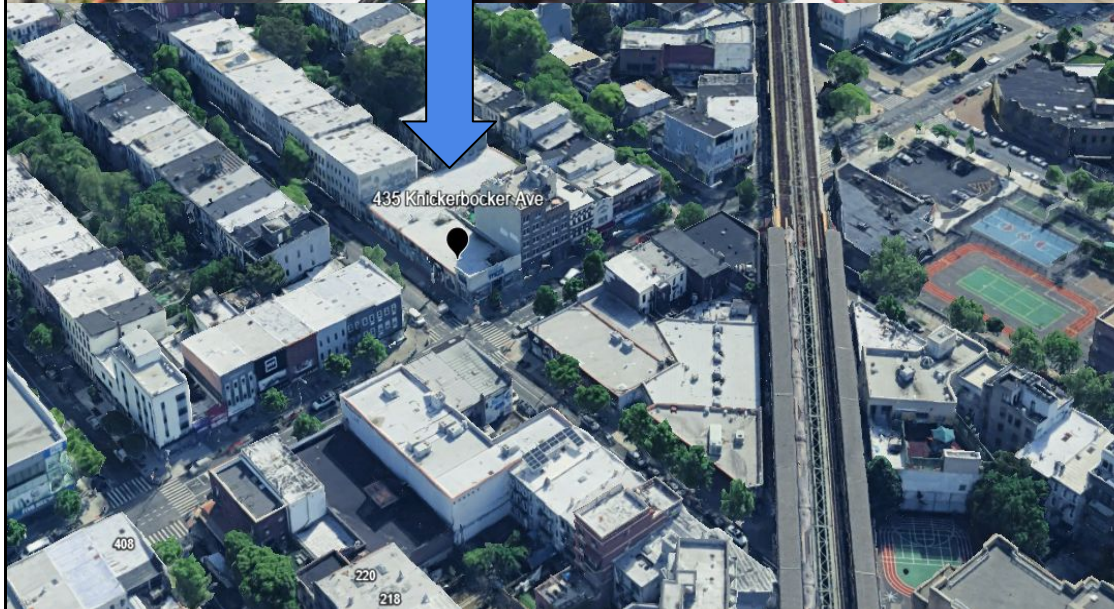
IMMEDIATE

ASKING RENT:

Upon Request



MAG
REALTY ASSOCIATES



Property Highlights:

- ❑ High Traffic Street (Day and Night)
- ❑ Steps To Subway
- ❑ Best corner on Knickerbocker Ave
- ❑ Surrounded By Many Nationals
- ❑ Many New Residential Developments
- ❑ Excellent Demographics
- ❑ All Uses Considered
- ❑ Currently Clothing Store
- ❑ High Ceilings
- ❑ Usable Lower Level Space

- ❑ Usable Lower Level Space
- ❑ High Ceilings
- ❑ Surrounded By Many Nationals

MAG
REALTY ASSOCIATES

HARMAN STREET

140 ft

150 ft

50 ft

STAIR
17
LOWER
LEVEL

90 ft

100 ft

snipes

50 ft

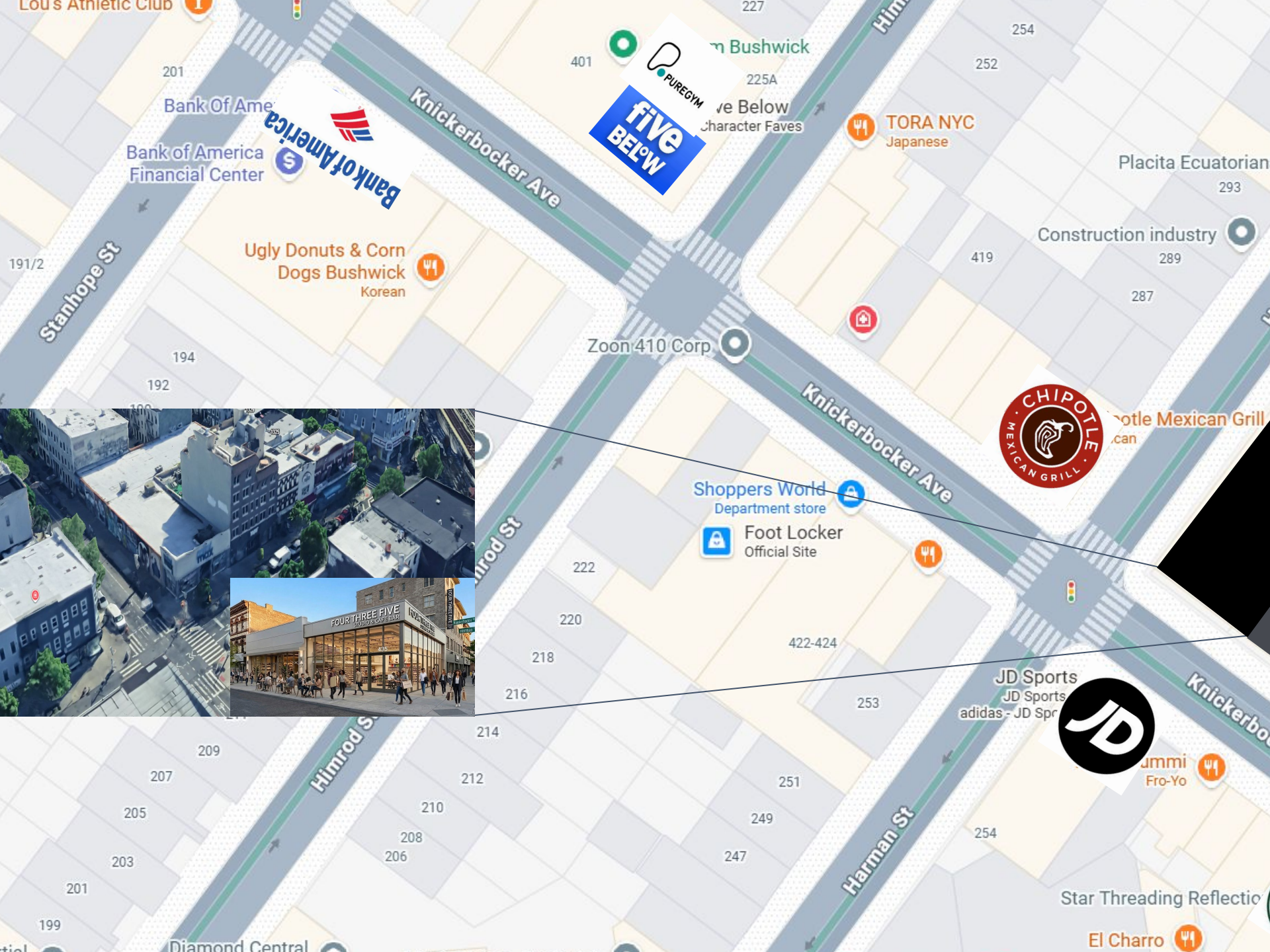
50 ft



KNICKERBOCKER AVENUE

MAG
REALTY ASSOCIATES





201

Bank of America
Bank of America
Financial Center



Ugly Donuts & Corn
Dogs Bushwick
Korean



401



Five Below
Character Faves

TORA NYC
Japanese



Placita Ecuatorian
293

Construction industry
289

287

Zoon 410 Corp

Knickerbocker Ave



Chipotle Mexican Grill
can

Shoppers World
Department store



Foot Locker
Official Site



JD Sports
JD Sports
adidas - JD Spr



Jummi
Fro-Yo



Star Threading Reflectio

El Charro



Diamond Central

201

199

209

207

205

203

209

207

205

203

199

214

212

210

208

206

214

212

210

208

206

222

220

218

216

222

220

218

216

422-424

253

251

249

247

422-424

253

251

249

247

419

254

252

419

254

252

254

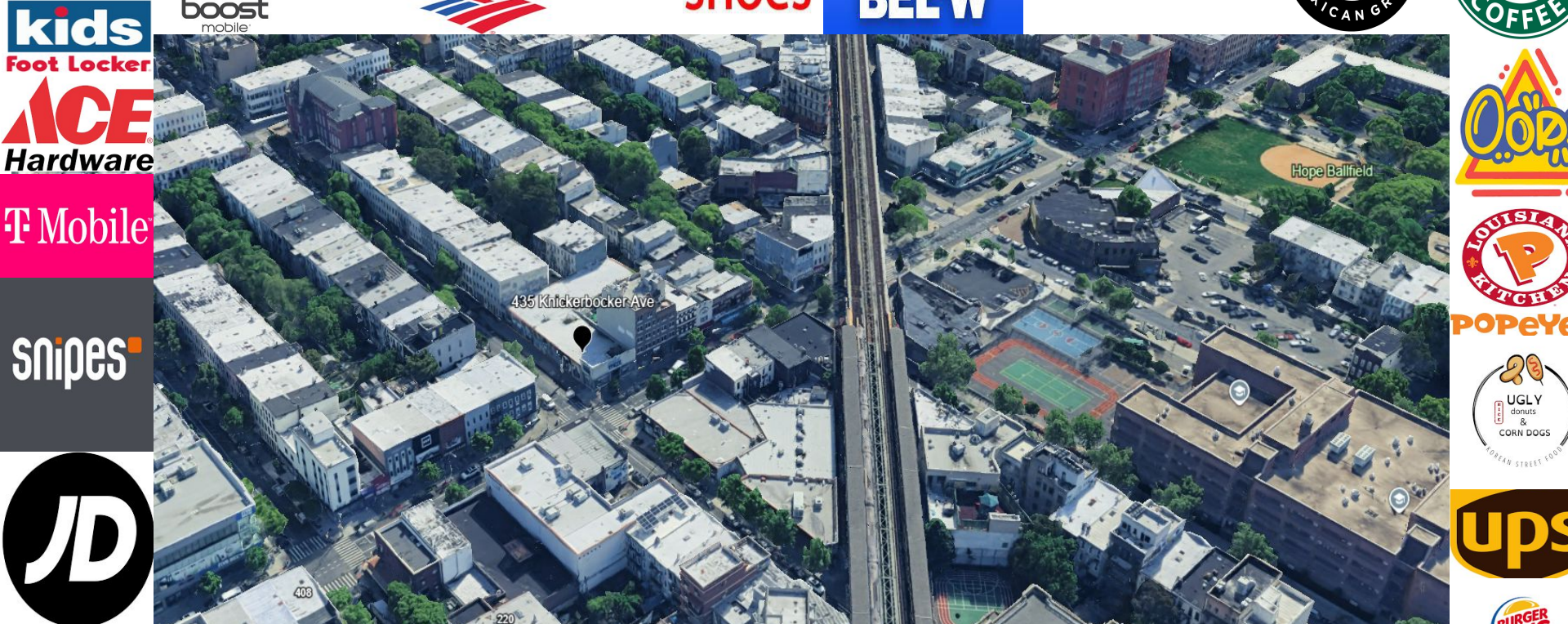
Harman St

Stanhope St

Knickerbocker Ave

Himrod St

Himrod St





For More Information:

Avi Garma

M 347.935.0216

O 212.920.0226

Avi@Magnyre.com