

Have you seen 222 Delaware Avenue lately?
FULLY RENOVATED – CLASS A+ FINISHES

222 DELAWARE AVENUE

PNC Bank Center, Wilmington, Delaware



PROPERTY FEATURES

- Building size: 273,374 SF
- Year built: 1987 - Renovated in 2023
- Parking: Six parking levels for 536 vehicles
- EV charging stations: Six
- Elevators: Six destination dispatch, one freight elevator, two parking garage elevators
- HVAC: Water source heat pump system
- Electric: Dual power feeds (13,000 volts per feed) 208/120V for receptacles and 480/277V for lighting
- Brew HaHa! Cafe on the ground floor of building
- Comcast, Verizon and AT&T voice and data cabling





The PNC Bank Center is an eighteen-story, Class-A office building prominently situated in Wilmington, Delaware. It is one of the premier office buildings in downtown Wilmington. With numerous hotels, restaurants and coffee shops within walking distance, the PNC Bank Center is in the heart of it all.

MAJOR TENANTS

- Barnes & Thornburg LLP
- Eckert Seamans
- Faegre Drinker Biddle & Reath
- Fish & Richardson
- Greenberg Traurig
- PNC Bank
- Polsinelli
- Wilson Sonsini Goodrich & Rosati



"TENANT ONLY" CONFERENCE CENTER – SEATING FOR 30+ PEOPLE



"TENANT ONLY" FITNESS CENTER





ONSITE RETAIL AMENITIES



SIX LEVELS OF PARKING

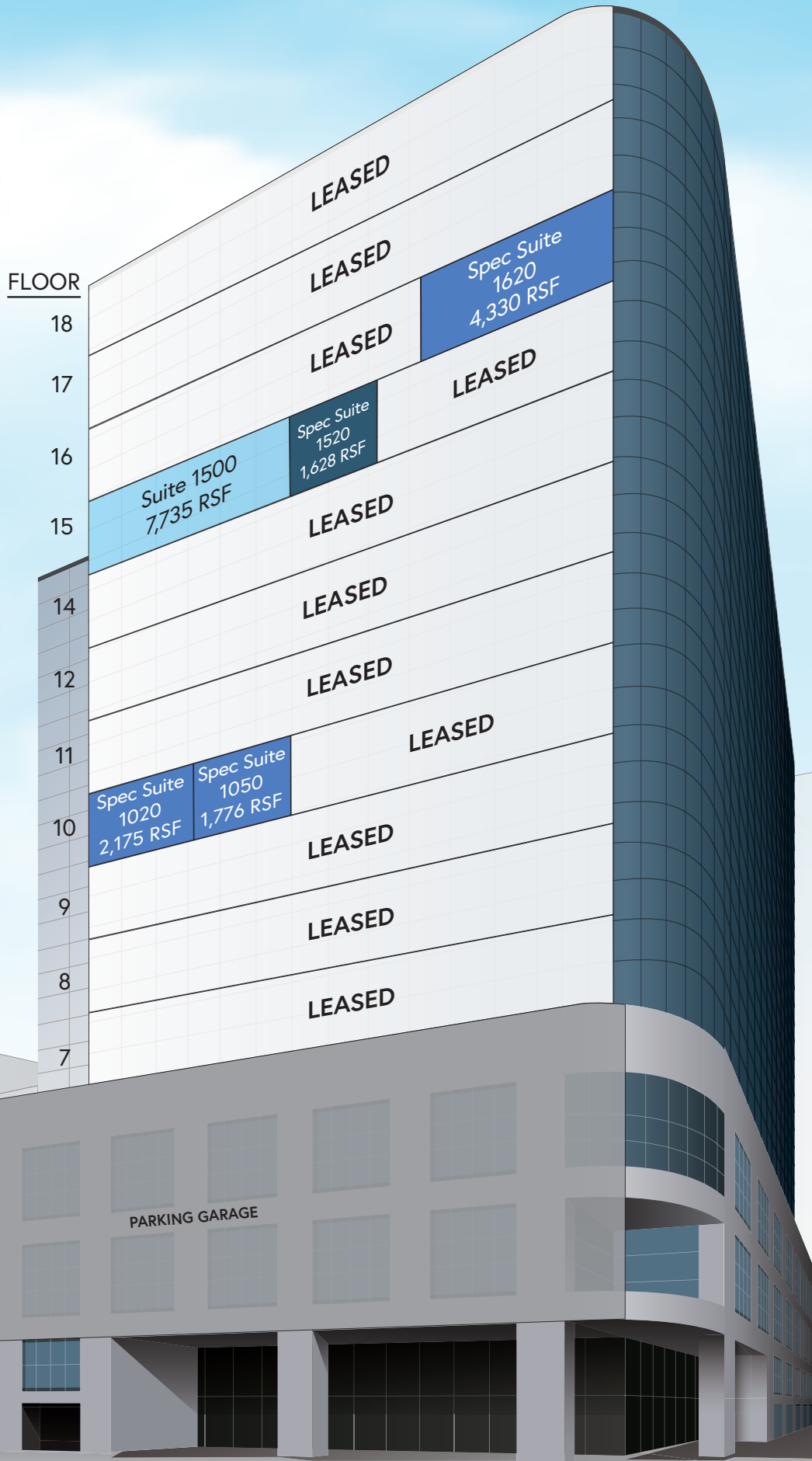


SIX EV CHARGING STATIONS

**FULLY FURNISHED
PLUG & PLAY
AVAILABLE**

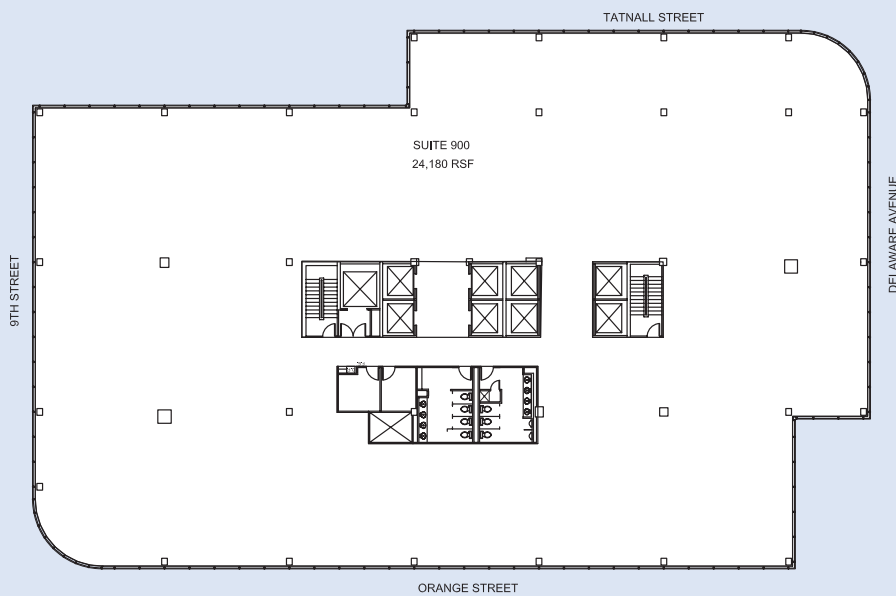
**SPEC SUITES
AVAILABLE**

AVAILABLE





TYPICAL FLOOR PLAN



222 DELAWARE AVENUE

Christiana Health Care Services

Marriott Courtyard

Sheraton Suites

DuPont Theater

Grand Opera House

Delaware Historical Society

Delaware Chancery Court

Christina Riverwalk

Riverfront Market

Tubman Garrett Riverfront Park

Marriott Residence Inn

Theatre N @ Nemours

Hotel DuPont

Rodney Square

Delaware Supreme Court

US Bankruptcy Court

DoubleTree Hotel

New Castle County Courthouse

AMTRAK
Wilmington Train Station

CBRE, Inc.
3711 Kennett Pike, Suite 210
Wilmington, DE 19807
+1 302 661 6700
cbre.us/wilmington
Licensed Real Estate Broker

ABOUT THE OWNER

Douglas Development was founded in 1985 by Douglas Jemal and has grown to become a fully integrated real estate company with a diverse portfolio of more than 10 million square feet located in Virginia, Maryland, New York, New Jersey, Pennsylvania and the District of Columbia.

© 2026 CBRE, Inc. All rights reserved. This information has been obtained from sources believed reliable but has not been verified for accuracy or completeness. CBRE, Inc. makes no guarantee, representation or warranty and accepts no responsibility or liability as to the accuracy, completeness, or reliability of the information contained herein. You should conduct a careful, independent investigation of the property and verify all information. Any reliance on this information is solely at your own risk. CBRE and the CBRE logo are service marks of CBRE, Inc. All other marks displayed on this document are the property of their respective owners, and the use of such marks does not imply any affiliation with or endorsement of CBRE. Photos herein are the property of their respective owners. Use of these images without the express written consent of the owner is prohibited.

2/10/26

CBRE

**Douglas
Development**
CORPORATION