

# 37 UNION SQUARE WEST

## LOCATION

Between 16th & 17th Streets on Union Square

## TERM

Three (3) Years

## PREMISES

ENTIRE 3RD FLOOR — 4,450 RSF

ENTIRE 5TH FLOOR — 4,625 RSF

**\$1 PSF BROKER BONUS**



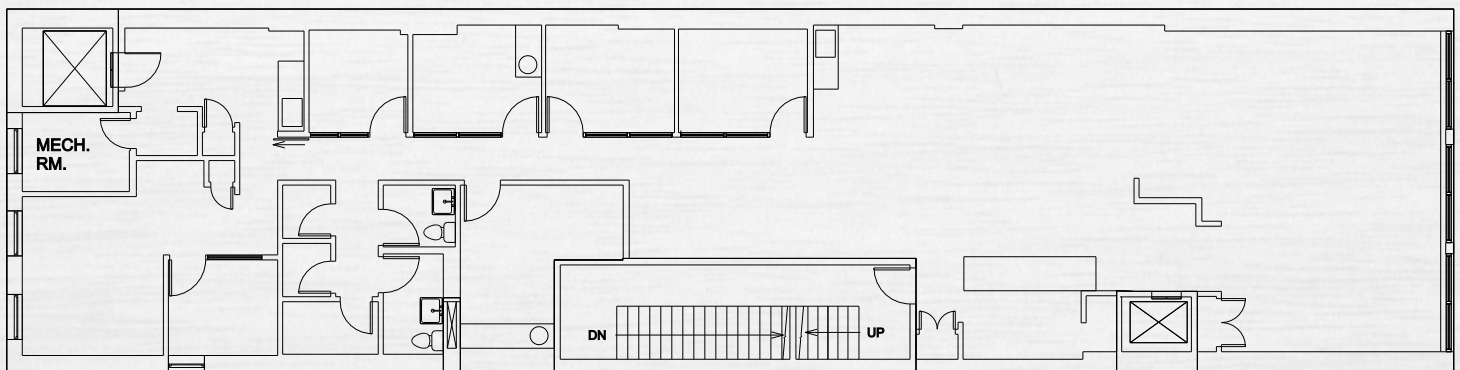
Actual view from space

## ENTIRE 3RD FLOOR

- Incredible views of Union Square
- 14-foot Ceilings
- Column free space
- 5 Rooms - 2 with plumbing
- Large open area
- Reception area
- 2 Eat-In wet pantries
- 3 Bathrooms
- Tons of storage
- Wood and carpeted floors
- 10-ton AC unit



## FLOOR PLAN



UNION SQUARE WEST

## ENTIRE 5TH FLOOR

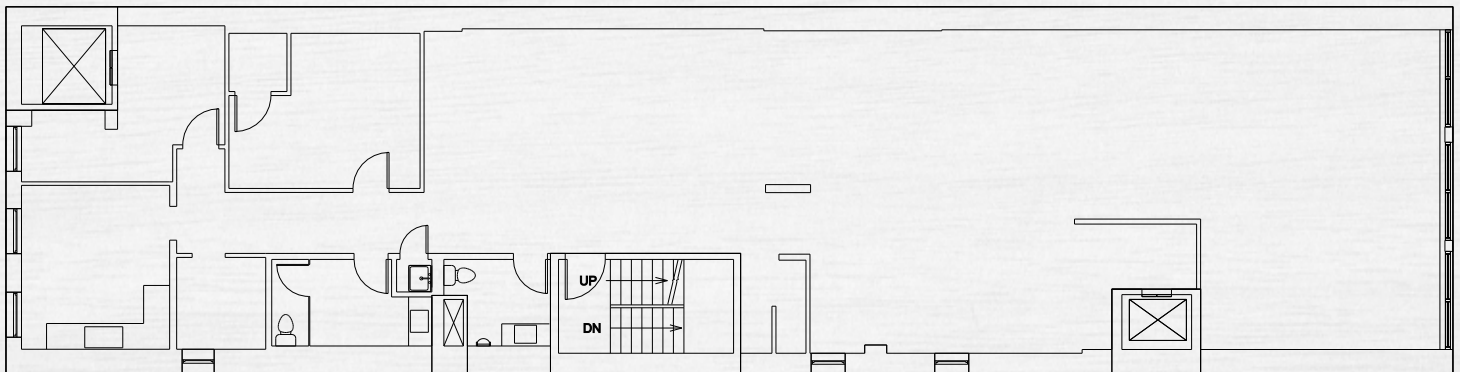
- Incredible views of Union Square
- Column free space
- Great natural light
- 2 Offices
- 1 Conference room
- Large open area
- 2 Large, recently renovated bathrooms - multiple stalls in each
- Eat-In wet pantry
- Hardwood floors
- Tenant controlled AC



## BUILDING HIGHLIGHTS

- Directly across from Union Square and the Greenmarket
- Citi Bike across the street
- Two entrances
- Steps to the following subway lines:  
**4 5 6 L N Q R W**
- Attended lobby with extended hours 7 days / week
- Operable Windows

## FLOOR PLAN



### TODD KORREN

Executive Managing Director | Principal  
212.776.1283  
tkorren@lee-associates.com

### WOODY KING

Managing Director  
212.776.4352  
wking@lee-associates.com