



±3,744 SF
Industrial Unit for Lease

10755

Well Maintained
Multi-Tenant Building

Forest Street

Santa Fe Springs, CA 90670

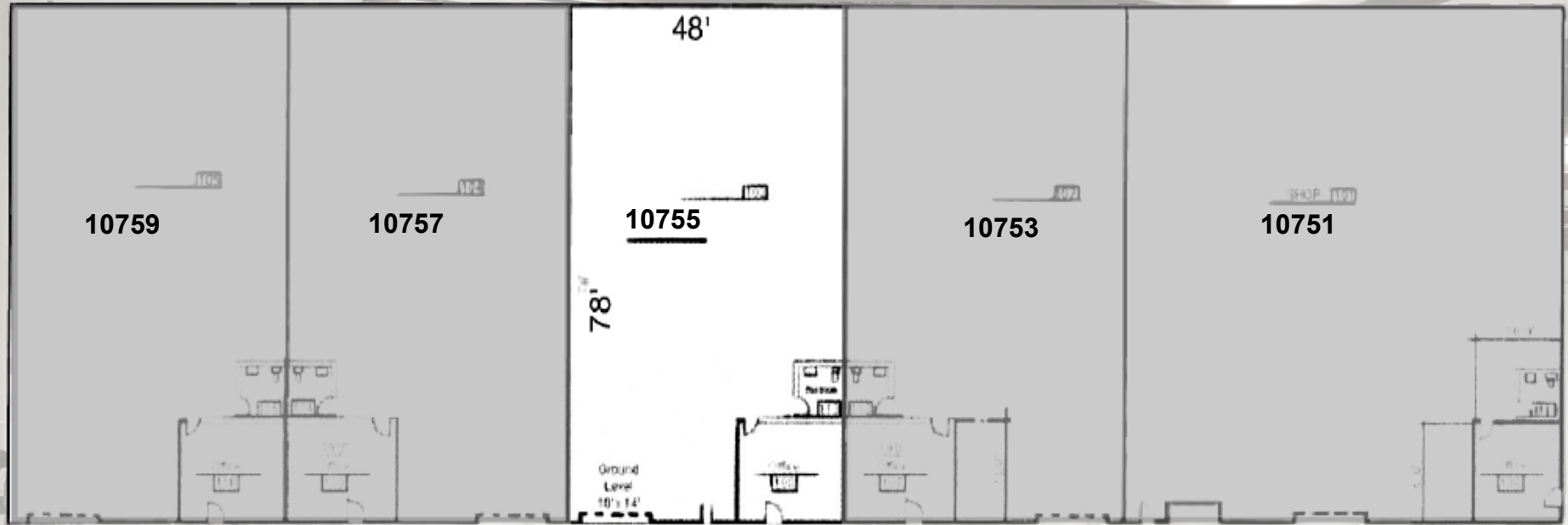


Jon Reno SIOR, CCIM
Managing Director
CA Lic.# 01277642
jon.reno@jll.com
+1 213 271 1508

Mark Vanis
Managing Director
CA Lic.# 01305617
mark.vanis@jll.com
+1 213 239 5908

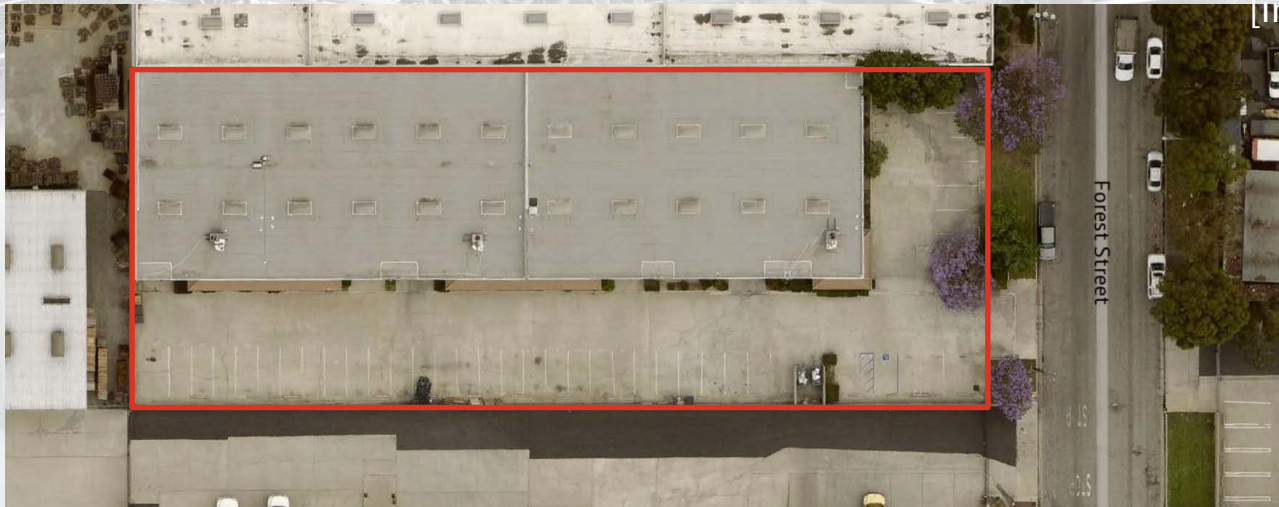
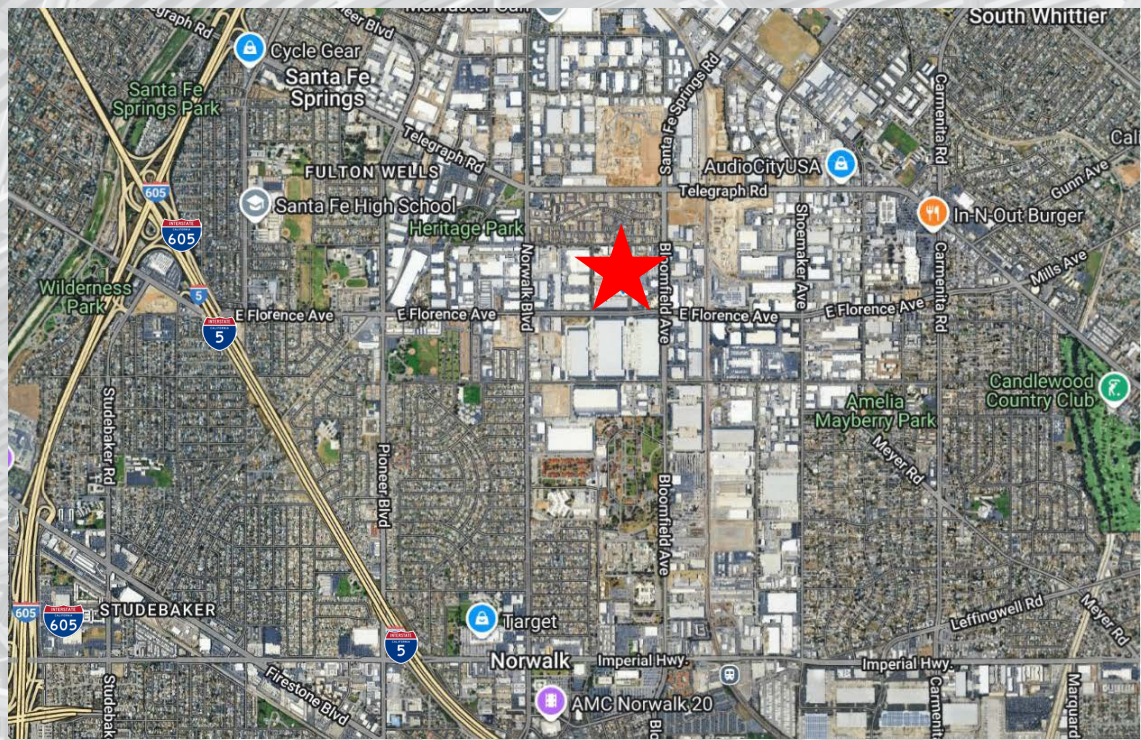
Trevor Gale SIOR
Managing Director CA
DRE #01452957
trevor.gale@am.jll.com
+1 213 239 6256

10755 Forest St. Santa Fe Springs, CA



Building Highlights

Available s.f.	3,744 SF	Restrooms	1
Office s.f.	800 SF	Grade level doors	One (1) 10x14
Clear height	18'	Power	A:100 V: 277/480
Asking Rate	\$1.40 Gross CAM \$412.88/mo *trash, water, + landscape	Built	1984
		Available	11/01/2025
		Second Parking	3 spaces Close proximity to amenities



[insert photo]



Although information has been obtained from sources deemed reliable, JLL does not make any guarantees, warranties or representations, express or implied, as to the completeness or accuracy as to the information contained herein. Any projections, opinions, assumptions or estimates used are for example only. There may be differences between projected and actual results, and those differences may be material. JLL does not accept any liability for any loss or damage suffered by any party resulting from reliance on this information. If the recipient of this information has signed a confidentiality agreement with JLL regarding this matter, this information is subject to the terms of that agreement. ©2021. Jones Lang LaSalle IP, Inc. All rights reserved.

Jones Lang LaSalle Brokerage Inc. | CA DRE #01856260 | +1 213 239 6100 | 515 S Flower Street, 13th Floor, Los Angeles CA 90071