

16 45

PALM
BEACH LAKES



JOHN CRIDDLE

Executive Vice President

T +1 561 283 5176

john.criddle@cbre.com

JOE FREITAS

First Vice President

+1 561 512 8844

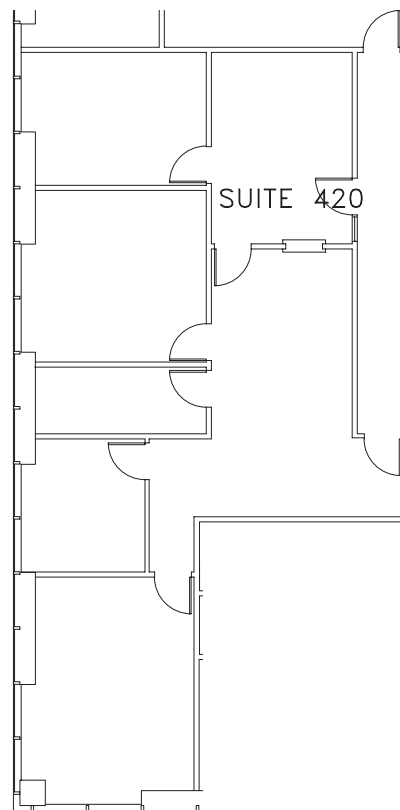
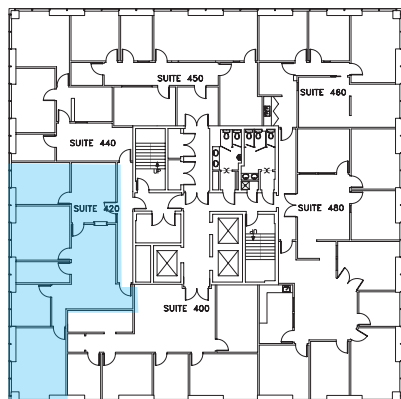
joe.freitas@cbre.com

MAX PAWK

Senior Associate

T +1 561 393 1670

max.pawk@cbre.com



Class A OFFICE BUILDING

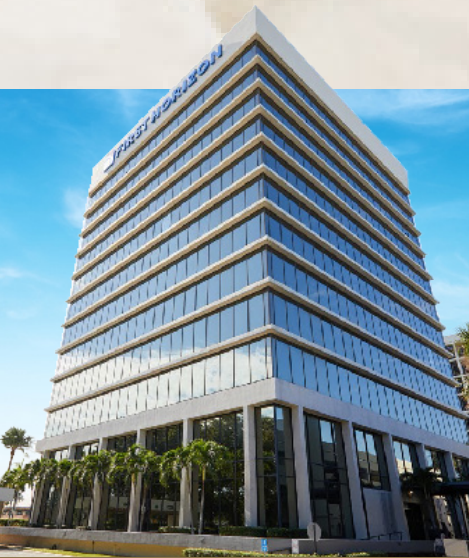
Suite 420 / 1,731 SF

©2024 CBRE, Inc. All rights reserved. This information has been obtained from sources believed reliable, but has not been verified for accuracy or completeness. You should conduct a careful, independent investigation of the property and verify all information. Any reliance on this information is solely at your own risk. CBRE and the CBRE logo are service marks of CBRE, Inc. All other marks displayed on this document are the property of their respective owners, and the use of such logos does not imply any affiliation with or endorsement of CBRE. Photos herein are the property of their respective owners. Use of these images without the express written consent of the owner is prohibited.

1645 PALM BEACH LAKES BLVD, WEST PALM BEACH, FL 33401

1645 PALM BEACH LAKES BLVD, WEST PALM BEACH, FL 33401

Class A OFFICE BUILDING



Suite XX / XXX SF

JOHN CRIDDLE

Executive Vice President
T +1 561 283 5176
john.criddle@cbre.com

JOE FREITAS

First Vice President
+1 561 512 8844
joe.freitas@cbre.com

MAX PAWK

Senior Associate
T +1 561 393 1670
max.pawk@cbre.com

16 45

PALM
BEACH LAKES

©2024 CBRE, Inc. All rights reserved. This information has been obtained from sources believed reliable, but has not been verified for accuracy or completeness. You should conduct a careful, independent investigation of the property and verify all information. Any reliance on this information is solely at your own risk. CBRE and the CBRE logo are service marks of CBRE, Inc. All other marks displayed on this document are the property of their respective owners, and the use of such logos does not imply any affiliation with or endorsement of CBRE. Photos herein are the property of their respective owners. Use of these images without the express written consent of the owner is prohibited.