

The Colliers logo is located in the top right corner of the image. It consists of the word "Colliers" in a white serif font, centered within a dark blue rounded rectangle. Below the rectangle are three horizontal stripes in yellow, red, and blue from top to bottom.

For Sublease | ±22,211 SF Warehouse

1720 N Market Boulevard, Sacramento, CA

Tommy Ponder, SIOR

Executive Vice President
+1 916 563 3005
tommy.ponder@colliers.com
CA Lic. 01431508

George Vrame, SIOR

Vice President
+1 916 563 3041
george.vrame@colliers.com
CA Lic. 02028936

Emily Breece

Associate
+1 916 563 3091
emily.breece@colliers.com
CA Lic. 02147323

Colliers Sacramento
301 University Avenue
Suite 100
Main: +1 916 929 5999
colliers.com/sacramento

Property Details



±22,211 SF
Total



±750 SF
Office



±9,315 SF
Fenced &
Secured
Yard



Sublease
through
November 30,
2031



Natural Gas



LED Motion
Sensor
Warehouse
Lights



24'
Clear Height



Sprinklered



Skylights



400 Amp 277/480V

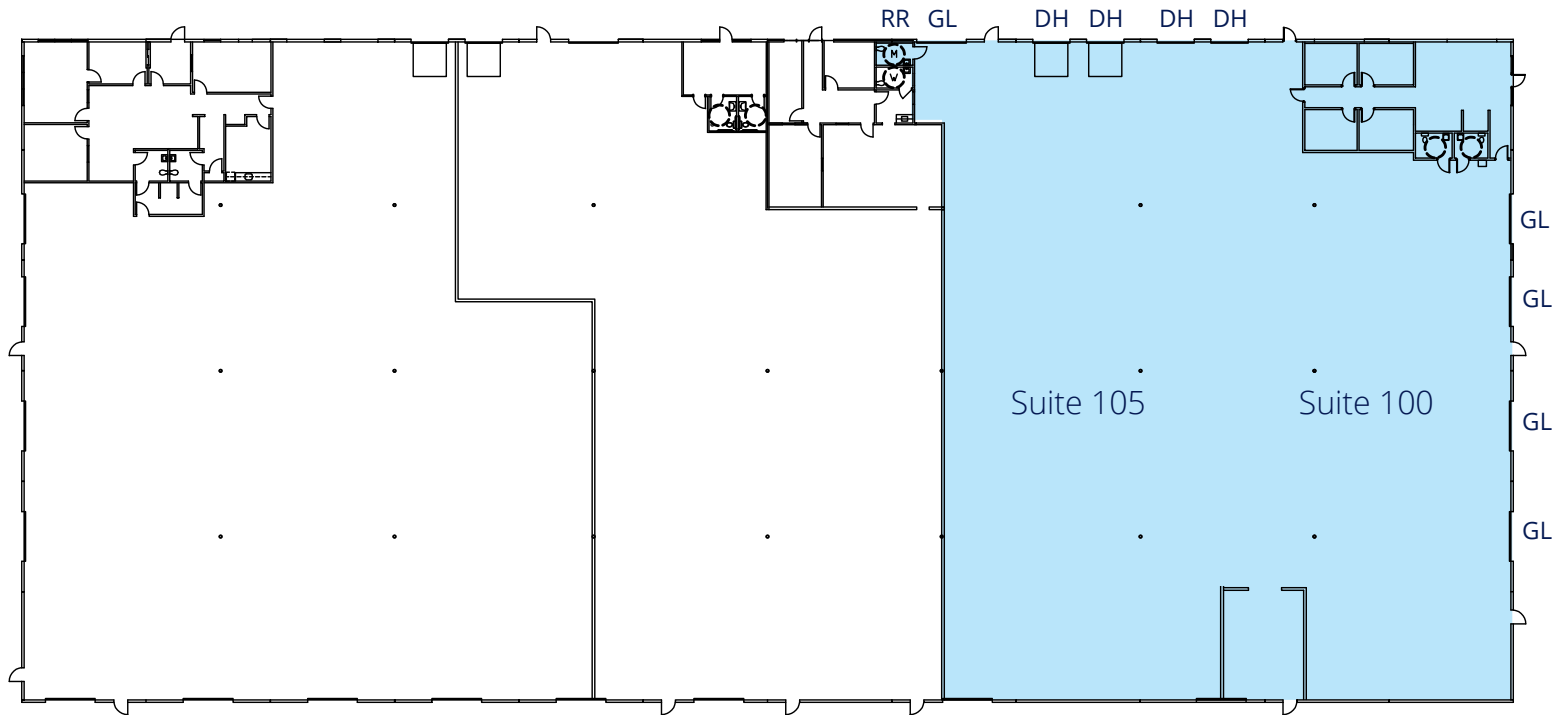


4 - 10' x 12'
Grade Level Doors

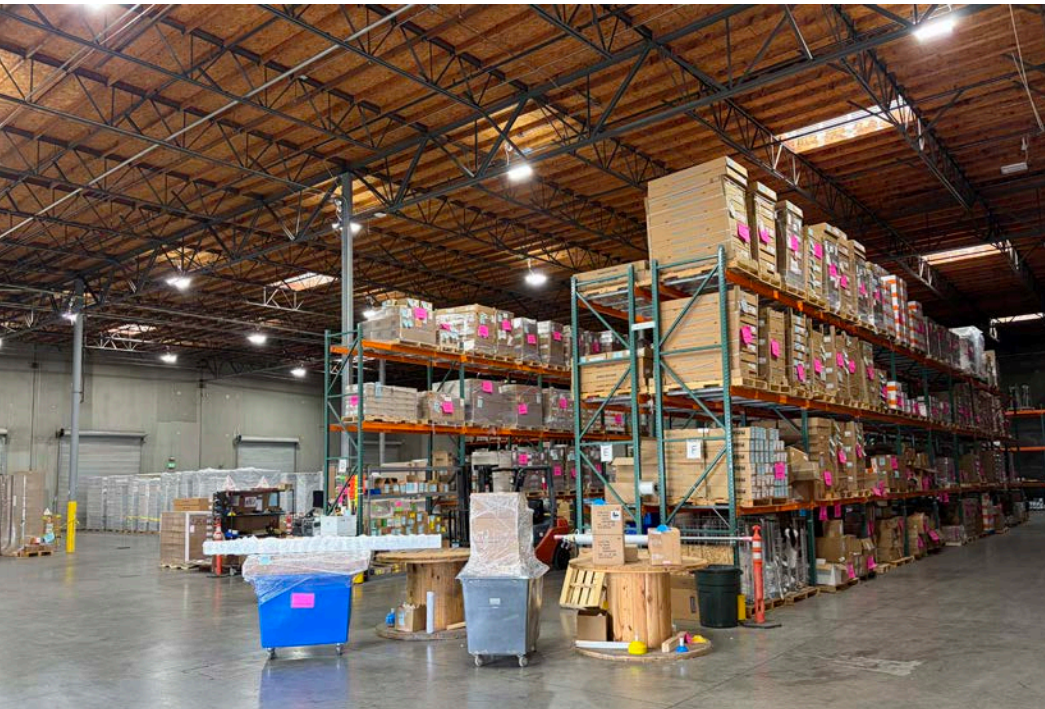


2 - 9' x 10' Dock
Doors with Pit
Levelers

2 - 9' x 10' Dock
Doors with Edge of
Dock Levelers



Property Photos



Location Overview



Tommy Ponder, SIOR
Executive Vice President
+1 916 563 3005
tommy.ponder@colliers.com
CA Lic. 01431508

George Vrame, SIOR
Vice President
+1 916 563 3041
george.vrame@colliers.com
CA Lic. 02028936

Emily Breece
Associate
+1 916 563 3091
emily.breece@colliers.com
CA Lic. 02147323

