

THE GROVE 270
9200 CORPORATE
BLVD

Office For Lease

1,107 - 4,789 SF



Leasing Information:
301.304.8300

Paul "Rocky" Kern **Richard Coppola**
301.304.8399 301.304.8405
pkern@lpc.com rcoppola@lpc.com

Lincoln

1101 Wootton Pkwy
Suite 410
Rockville, MD 20854

www.lpc.com

9200 CORPORATE BLVD - THE GROVE 270

9200 Corporate Boulevard | Rockville, MD 20850

Office For Lease

1,107 - 4,789 SF



Property Highlights

- Ample Free Surface and Covered Parking
- Full-Service Deli at 9210 Corporate
- Fitness Centers at 9200 & 9211 Corporate
- Conference Facilities at 9200 & 9211 Corporate
- Close Proximity to Rockville and Shady Grove Metrorail Stations (Red Line)
- On-site Property Management
- Close Proximity to Prime Retail and Dining Locations Including the Rio Washingtonian Center and Downtown Crown

Availabilities

- Suite 100
- Suite 140
- Suite 143
- Suite 230
- Suite 375
- Suite 400
- Suite 460

SF

- 4,155 SF
- 1,107 SF
- 1,646 SF
- 4,789 SF
- 3,605 SF
- 1,749 SF
- 4,313 SF

Date Available

- Immediately
- Immediately
- Immediately
- Immediately
- Immediately
- Immediately
- Immediately

Paul "Rocky" Kern

301.304.8399
pkern@lpc.com

Richard Coppola

301.304.8405
rcoppola@lpc.com

Lincoln

9200 CORPORATE BLVD - THE GROVE 270

9200 Corporate Boulevard | Rockville, MD 20850

Property Photos

1,107 - 4,789 SF



Paul "Rocky" Kern

301.304.8399
pkern@lpc.com

Richard Coppola

301.304.8405
rcoppola@lpc.com

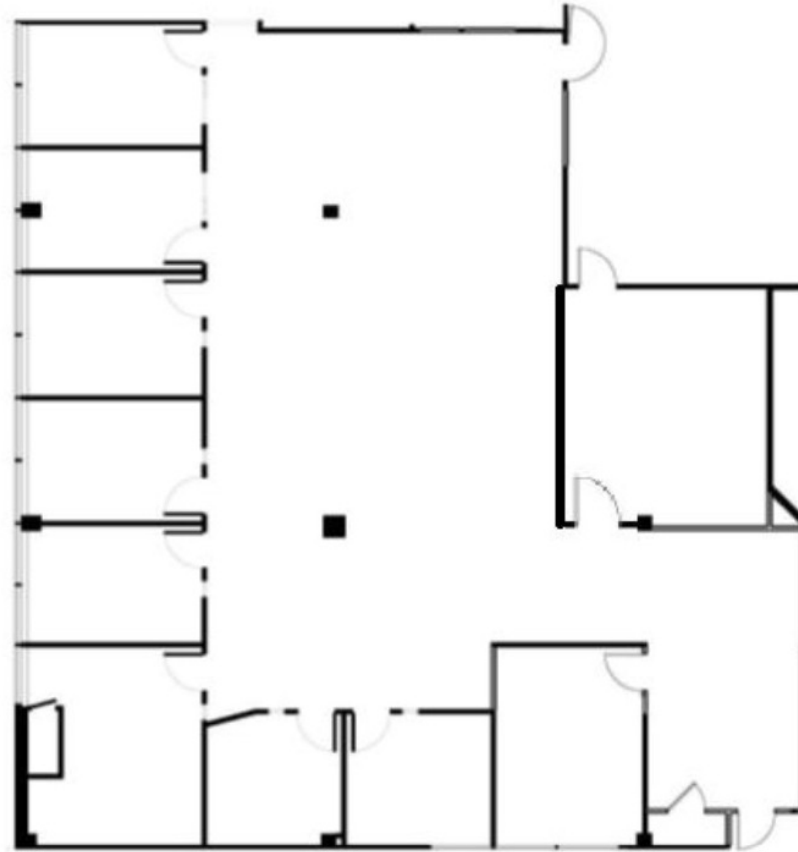
Lincoln

9200 CORPORATE BLVD - THE GROVE 270

9200 Corporate Boulevard | Rockville, MD 20850

Suite 100

4,155 SF



Suite	Size	Description
■ Suite 100	4,155 SF	Available Immediately

Paul "Rocky" Kern **Richard Coppola**

301.304.8399
pkern@lpc.com

301.304.8405
rcoppola@lpc.com

Lincoln

9200 CORPORATE BLVD - THE GROVE 270

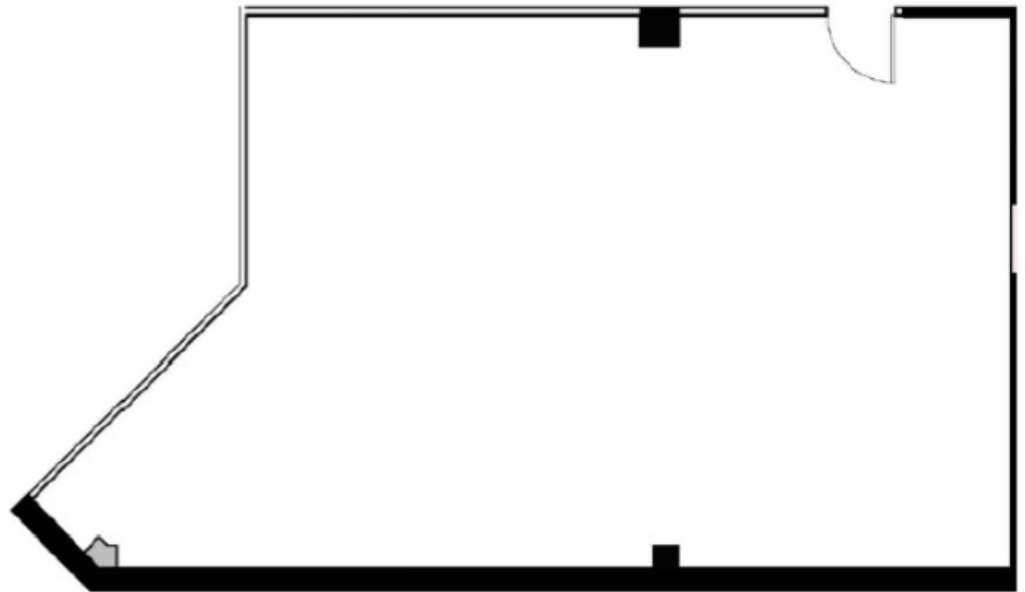
9200 Corporate Boulevard | Rockville, MD 20850

Suite 140

1,107 SF



BUILDING LEGEND



Suite	Size	Description
Suite 140	1,107 SF	Available immediately.

Paul "Rocky" Kern **Richard Coppola**

301.304.8399
pkern@lpc.com

301.304.8405
rcoppola@lpc.com

Lincoln

9200 CORPORATE BLVD - THE GROVE 270

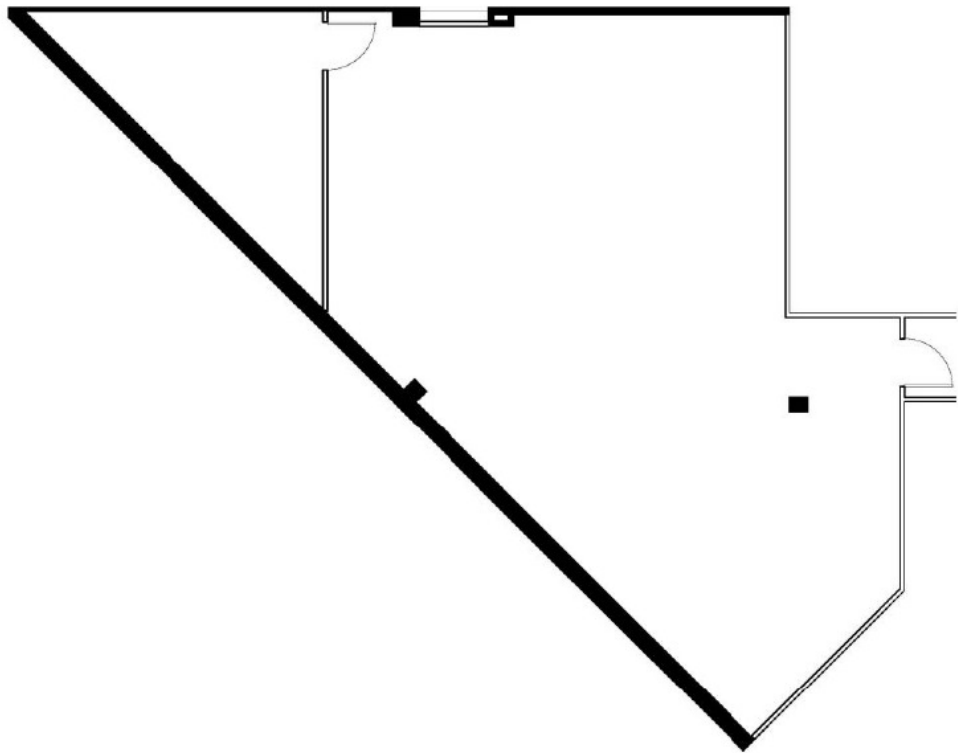
9200 Corporate Boulevard | Rockville, MD 20850

Suite 143

1,646 SF



BUILDING LEGEND



Suite	Size	Description
■ Suite 143	1,646 SF	Available Immediately

Paul "Rocky" Kern **Richard Coppola**

301.304.8399
pkern@lpc.com

301.304.8405
rcoppola@lpc.com

Lincoln

9200 CORPORATE BLVD - THE GROVE 270

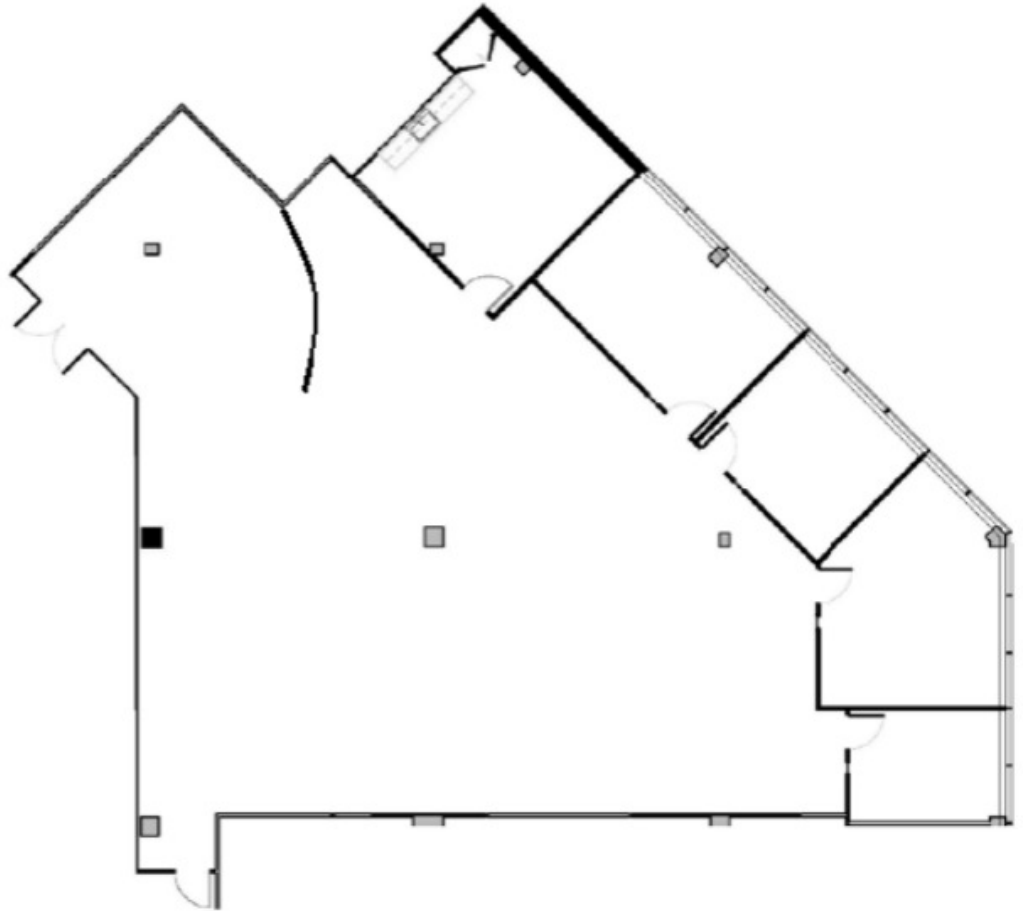
9200 Corporate Boulevard | Rockville, MD 20850

Suite 230

4,789 SF



BUILDING LEGEND



Suite	Size	Description
■ Suite 230	4,789 SF	Available Immediately

Paul "Rocky" Kern

301.304.8399
pkern@lpc.com

Richard Coppola

301.304.8405
rcoppola@lpc.com

Lincoln

9200 CORPORATE BLVD - THE GROVE 270

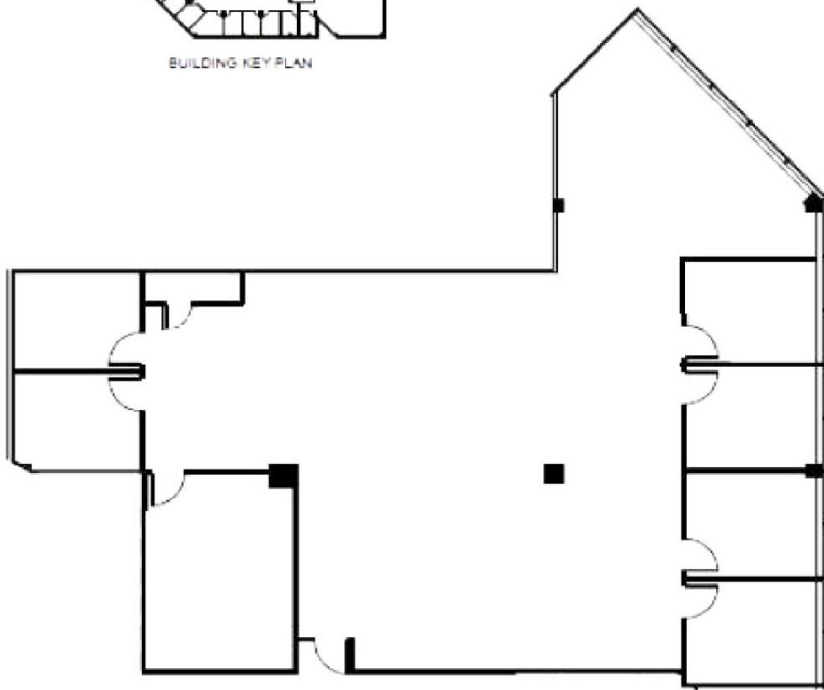
9200 Corporate Boulevard | Rockville, MD 20850

Suite 375

3,605 SF



BUILDING KEY PLAN



Suite	Size	Description
■ Suite 375	3,605 SF	Available Immediately

Paul "Rocky" Kern

301.304.8399
pkern@lpc.com

Richard Coppola

301.304.8405
rcoppola@lpc.com

Lincoln

9200 CORPORATE BLVD - THE GROVE 270

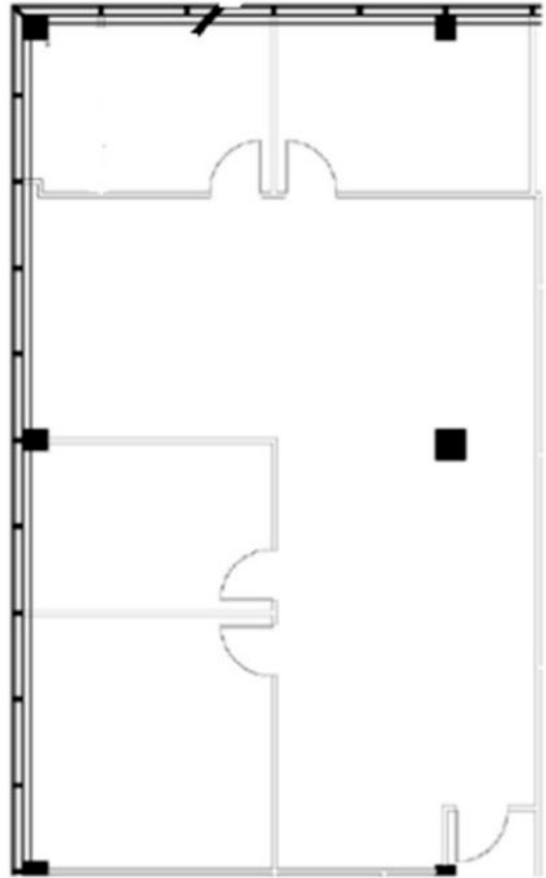
9200 Corporate Boulevard | Rockville, MD 20850

Suite 400

1,749 SF



BUILDING LEGEND



Suite	Size	Description
■ Suite 400	1,749 SF	Available Immediately

Paul "Rocky" Kern **Richard Coppola**

301.304.8399
pkern@lpc.com

301.304.8405
rcoppola@lpc.com

Lincoln

9200 CORPORATE BLVD - THE GROVE 270

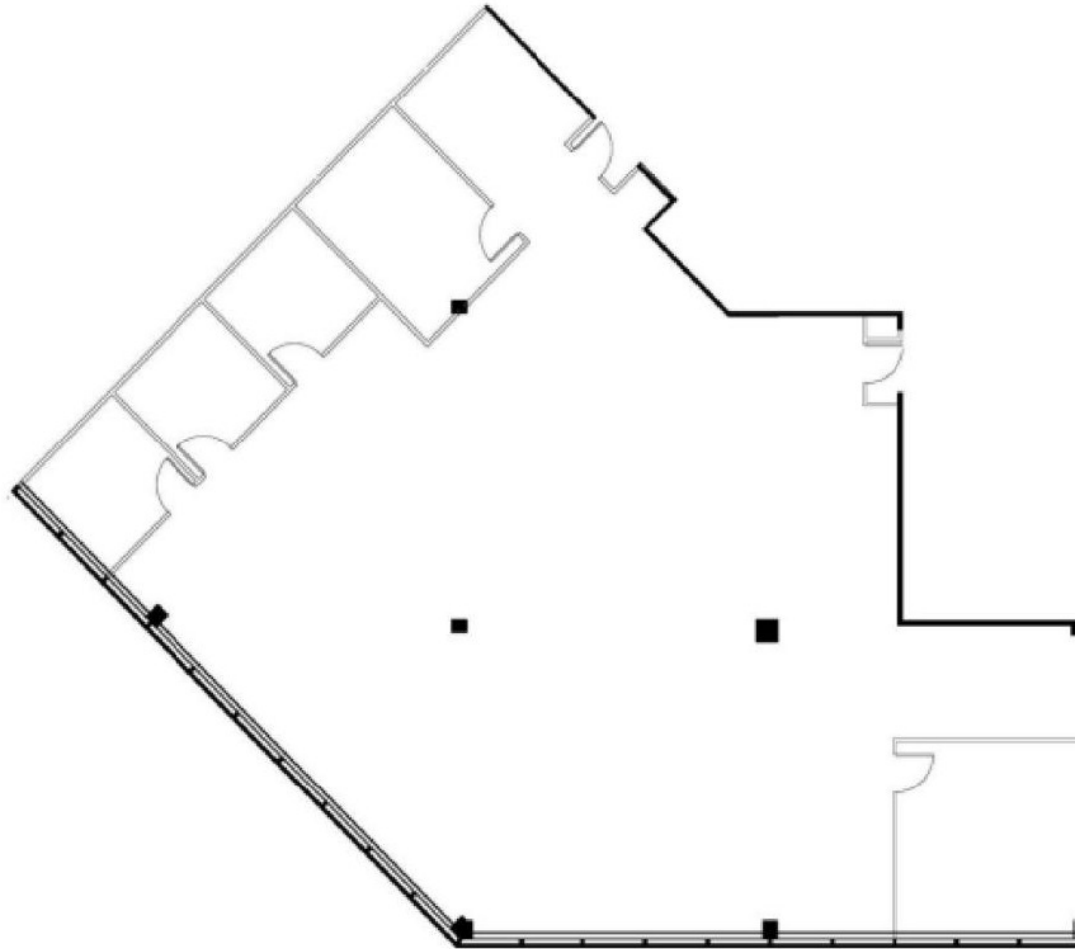
9200 Corporate Boulevard | Rockville, MD 20850

Suite 460

4,313 SF



BUILDING LEGEND



Suite	Size	Description
■ Suite 460	4,313 SF	Available Immediately.

Paul "Rocky" Kern

301.304.8399
pkern@lpc.com

Richard Coppola

301.304.8405
rcoppola@lpc.com

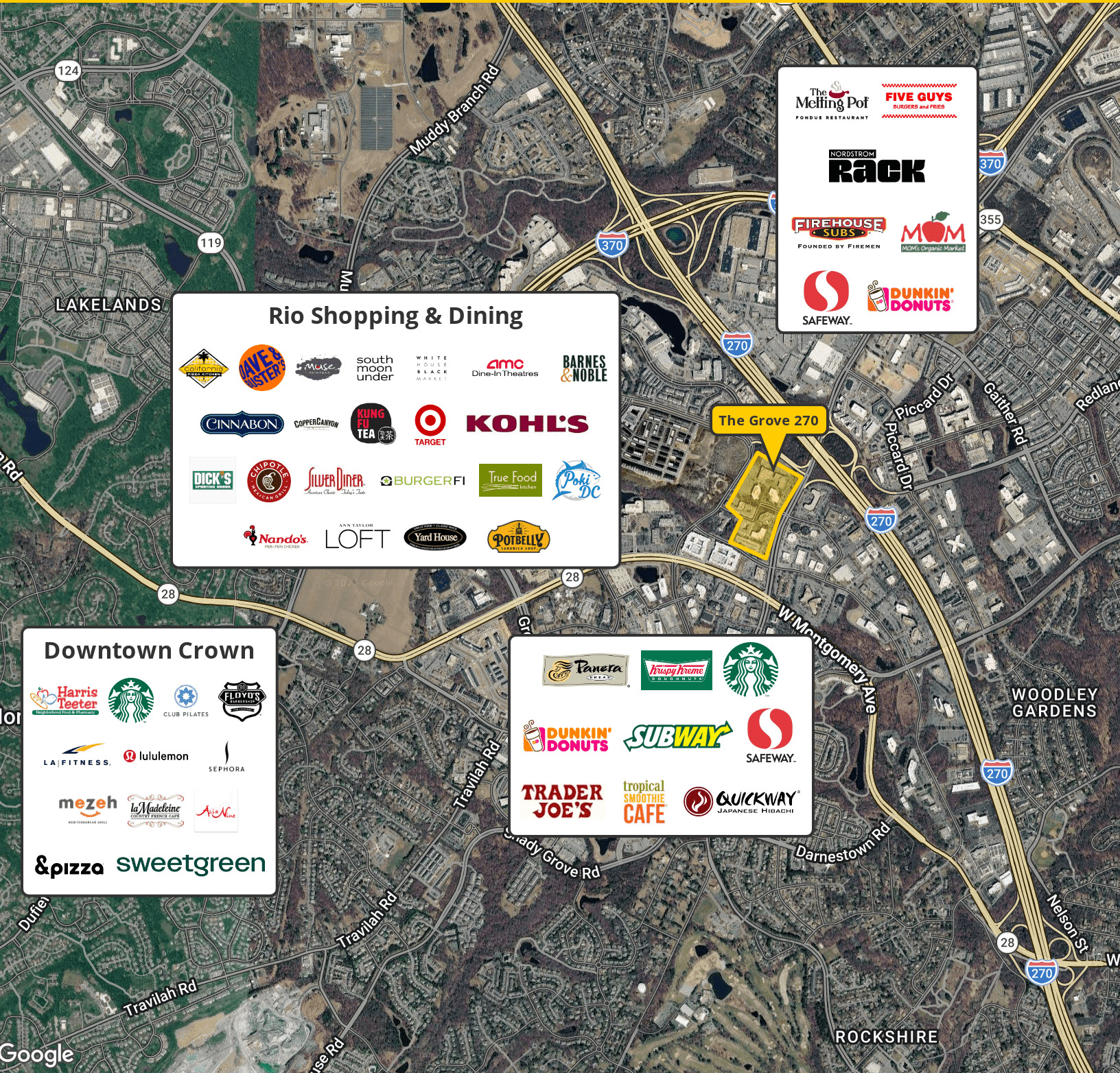
Lincoln

9200 CORPORATE BLVD - THE GROVE 270

9200 Corporate Boulevard | Rockville, MD 20850

Nearby Amenities

1,107 - 4,789 SF



Rio Shopping & Dining

- AMC Dine-In Theatres
- BARNES & NOBLE
- White House Black Market
- South Moon Under
- MUSE
- LAVERNE & WALTER
- Target
- KOHL'S
- True Food Kitchen
- Poki DC
- BURGERFI
- Silver Diner
- DICK'S
- AMPOLO
- Nando's
- LOFT
- Yard House
- POTBELLY
- CINNABON
- COPPERCANYON
- KUNG FU TEA

- The Melting Pot FONDUE RESTAURANT
- FIVE GUYS BURGERS and FRIES
- NORDSTROM RACK
- FIREHOUSE SUBS FOUNDED BY FIREMEN
- MOM'S Organic Market
- SAFeway
- DUNKIN' DONUTS

Downtown Crown

- Harris Teeter
- Starbucks
- CLUB PILATES
- FLORIAN'S
- LA FITNESS
- lululemon
- SEPHORA
- mezeh
- la Madeleine
- Avie's
- &pizza
- sweetgreen

- Panera
- Krispy Kreme
- Starbucks
- DUNKIN' DONUTS
- SUBWAY
- SAFeway
- TRADER JOE'S
- tropical SMOOTHIE CAFE
- QUICKWAY JAPANESE Hibachi

Paul "Rocky" Kern 301.304.8399 pkern@lpc.com
Richard Coppola 301.304.8405 rcoppola@lpc.com

Lincoln



THE GROVE 270 9200 CORPORATE BLVD

9200 Corporate Boulevard
Rockville, MD 20850

Leasing Information:
301.304.8300

Paul "Rocky" Kern
301.304.8399
pkern@lpc.com

Richard Coppola
301.304.8405
rcoppola@lpc.com

Lincoln

1101 Wootton Pkwy
Suite 410
Rockville, MD 20854

www.lpc.com