



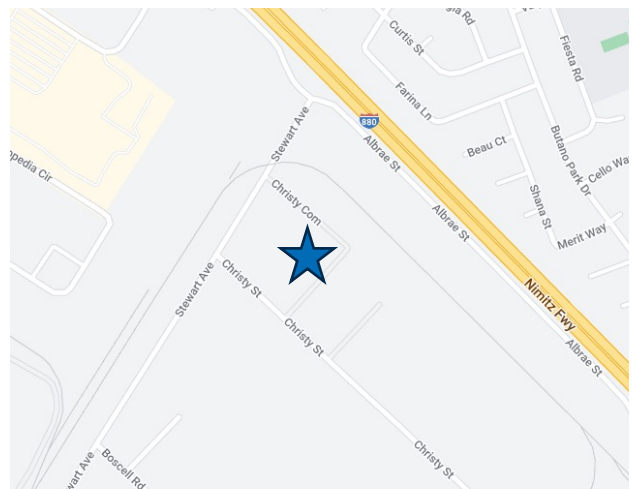
R&D/MFG Space available for Sublease

**41350 Christy Street, Suite B
Fremont, CA**

Property Highlights

- ± 10,042 Square Feet*
- Mix of office – Dry Lab – Warehouse
- Drop Ceiling: 14' clear height
- Warehouse: 20' clear height
- 2 Grade Level Doors
- Power: 400 amps @ 277/480V
- ± 3.8/1,000 parking
- LED: 4/31/2027 (Longer Term Direct Deal Possible)
- Contact Brokers for Touring & Rate Info.
- Available Now

*Can be combined with adjacent 18,951 SF unit for ± 29,000 SF



For information, please contact:

Steve Kapp, SIOR

Executive Managing Director

t 510-543-7822

Steve.Kapp@nmrk.com

CA RE LIC #01069911

Curtis Stahle

Director

t 510-508-1824

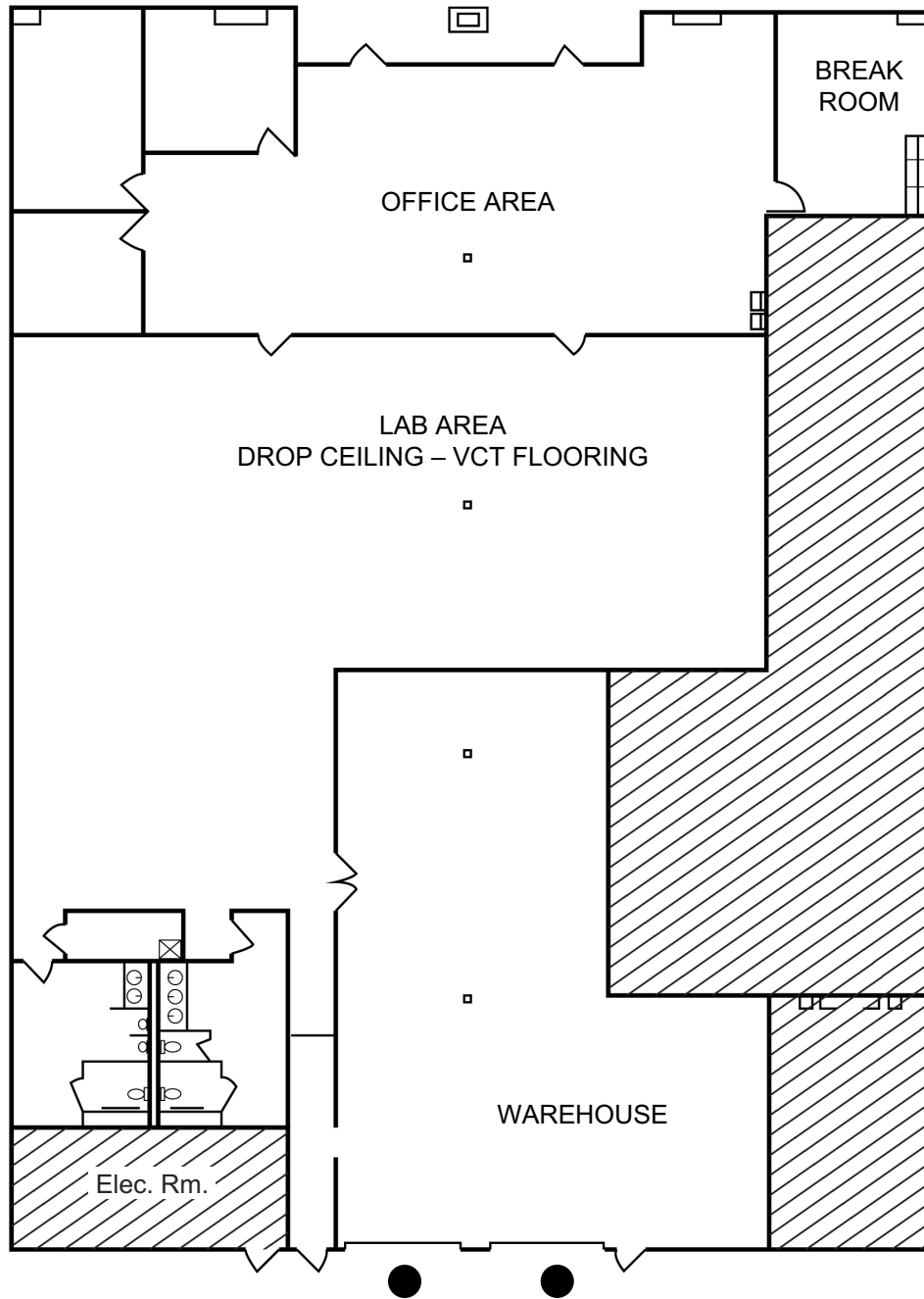
Curtis.Stahle@nmrk.com



CA RE LIC #1955258

nmrk.com

NEWMARK

The distributor of this communication is performing acts for which a real estate license is required. The information contained herein has been obtained from sources deemed reliable but has not been verified and no guarantee, warranty or representation, either express or implied, is made with respect to such information. Terms of sale or lease and availability are subject to change or withdrawal without notice.



-  Not Included
-  Grade Level Door

For information, please contact:

Steve Kapp, SIOR
 Executive Managing Director
 t 510-543-7822
Steve.Kapp@nmrk.com
 CA RE LIC #01069911

Curtis Stahle
 Director
 t 510-508-1824
Curtis.Stahle@nmrk.com
 CA RE LIC #1955258

nmrk.com



The distributor of this communication is performing acts for which a real estate license is required. The information contained herein has been obtained from sources deemed reliable but has not been verified and no guarantee, warranty or representation, either express or implied, is made with respect to such information. Terms of sale or lease and availability are subject to change or withdrawal without notice.