

R&D / OFFICE AVAILABLE FOR LEASE: 2,700 – 17,688 SF



### Property Highlights

- 6,888 SF - Suite A & B - \$3.80 PSF
- 2,700 SF - Suite C - \$3.25 PSF
- 2,700 SF - Suite D - \$3.65 PSF
- 5,400 SF - Suite E & F - \$3.75 PSF
- 17,688 SF Contiguous
- Excellent MV Location
- Offices & Dry Lab
- Large Open Areas
- Kitchen or Kitchenette
- Grade Level Roll-up Door
- Easy 85/237/101 Access
- Walk to Light Rail & CalTrain
- Professional Business Park Setting
- \$0.50 CAM
- **\$1 PSF Bonus to Procuring Broker**



*110 Pioneer Way, Mountain View, CA*

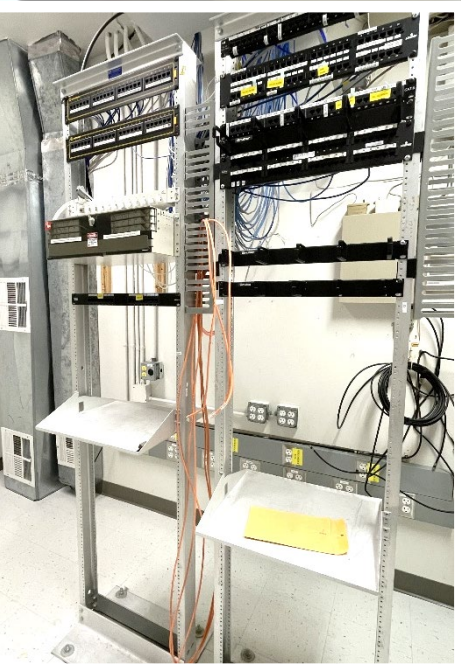
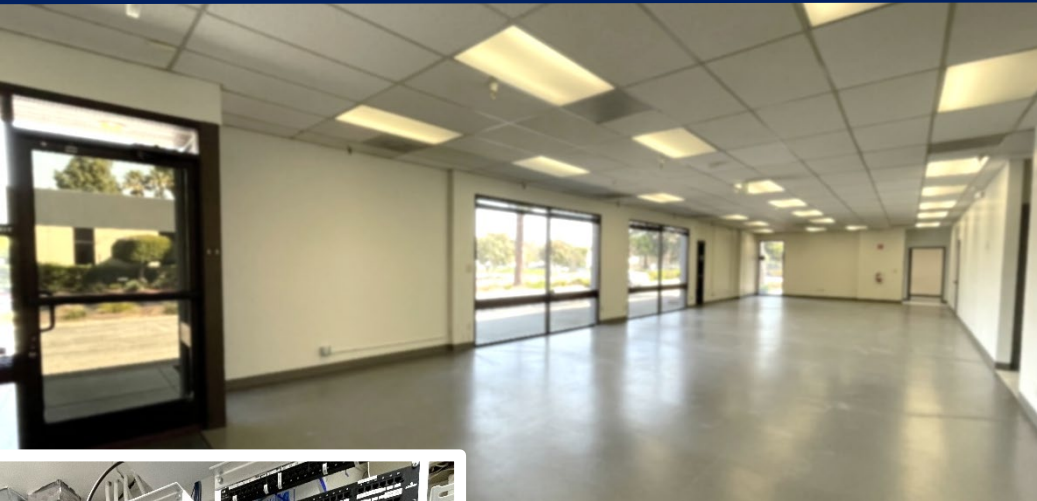
[www.GlobalCommercialProp.com](http://www.GlobalCommercialProp.com)

RALPH LONGO  
408-529-1362

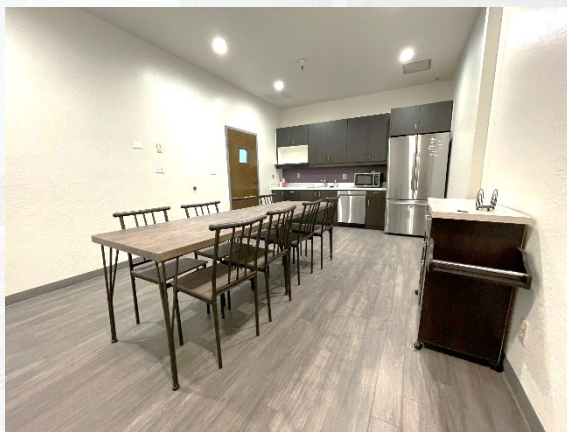
DRE #01202211

[RLONGO@GLOBALCOMMERCIALPROP.COM](mailto:RLONGO@GLOBALCOMMERCIALPROP.COM)

# R&D / OFFICE AVAILABLE FOR LEASE: 2,700 – 17,688 SF



Suites A & B  
6,888 SF  
\$3.80 PSF



*110 Pioneer Way, Mountain View, CA*

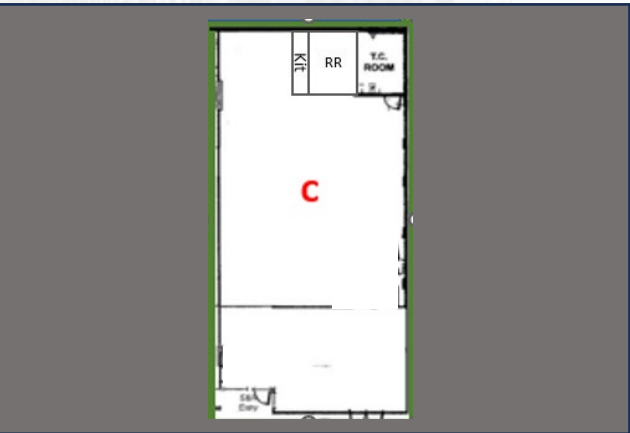
[www.GlobalCommercialProp.com](http://www.GlobalCommercialProp.com)

RALPH LONGO  
408-529-1362  
DRE #01202211  
RLONGO@GLOBALCOMMERCIALPROP.COM

# R&D / OFFICE AVAILABLE FOR LEASE: 2,700 – 17,688 SF



Suite C  
2,700 SF  
\$3.25 NNN



**GLOBAL**  
COMMERCIAL

*110 Pioneer Way, Mountain View, CA*

[www.GlobalCommercialProp.com](http://www.GlobalCommercialProp.com)

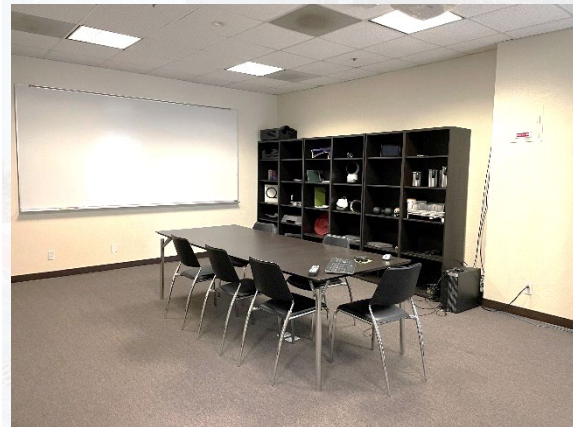
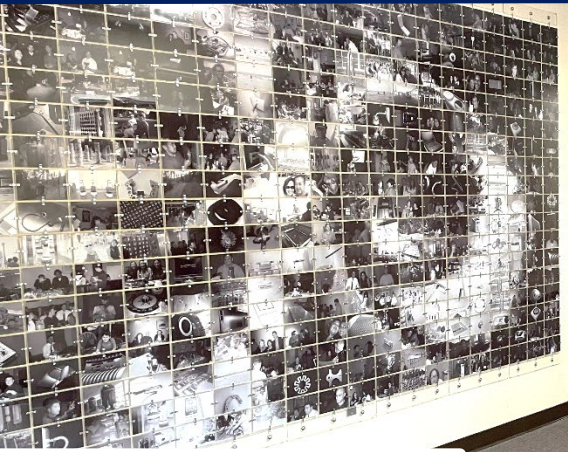
RALPH LONGO

408-529-1362

DRE #01202211

[RLONGO@GLOBALCOMMERCIALPROP.COM](mailto:RLONGO@GLOBALCOMMERCIALPROP.COM)

# R&D / OFFICE AVAILABLE FOR LEASE: 2,700 – 17,688 SF



Suites E & F  
5,400 SF  
\$3.75 PSF



*110 Pioneer Way, Mountain View, CA*

[www.GlobalCommercialProp.com](http://www.GlobalCommercialProp.com)

RALPH LONGO  
408-529-1362  
DRE #01202211  
[RLONGO@GLOBALCOMMERCIALPROP.COM](mailto:RLONGO@GLOBALCOMMERCIALPROP.COM)

# R&D / OFFICE AVAILABLE FOR LEASE: 2,700 – 17,688 SF



Estimated - 225 Amps  
480 / 277 3-Phase

Estimated 100 Amps  
480 / 277 3-Phase

Estimated - 100 Amps  
480 / 277 3-Phase

Estimated - 200 Amps  
480 / 277 3-Phase

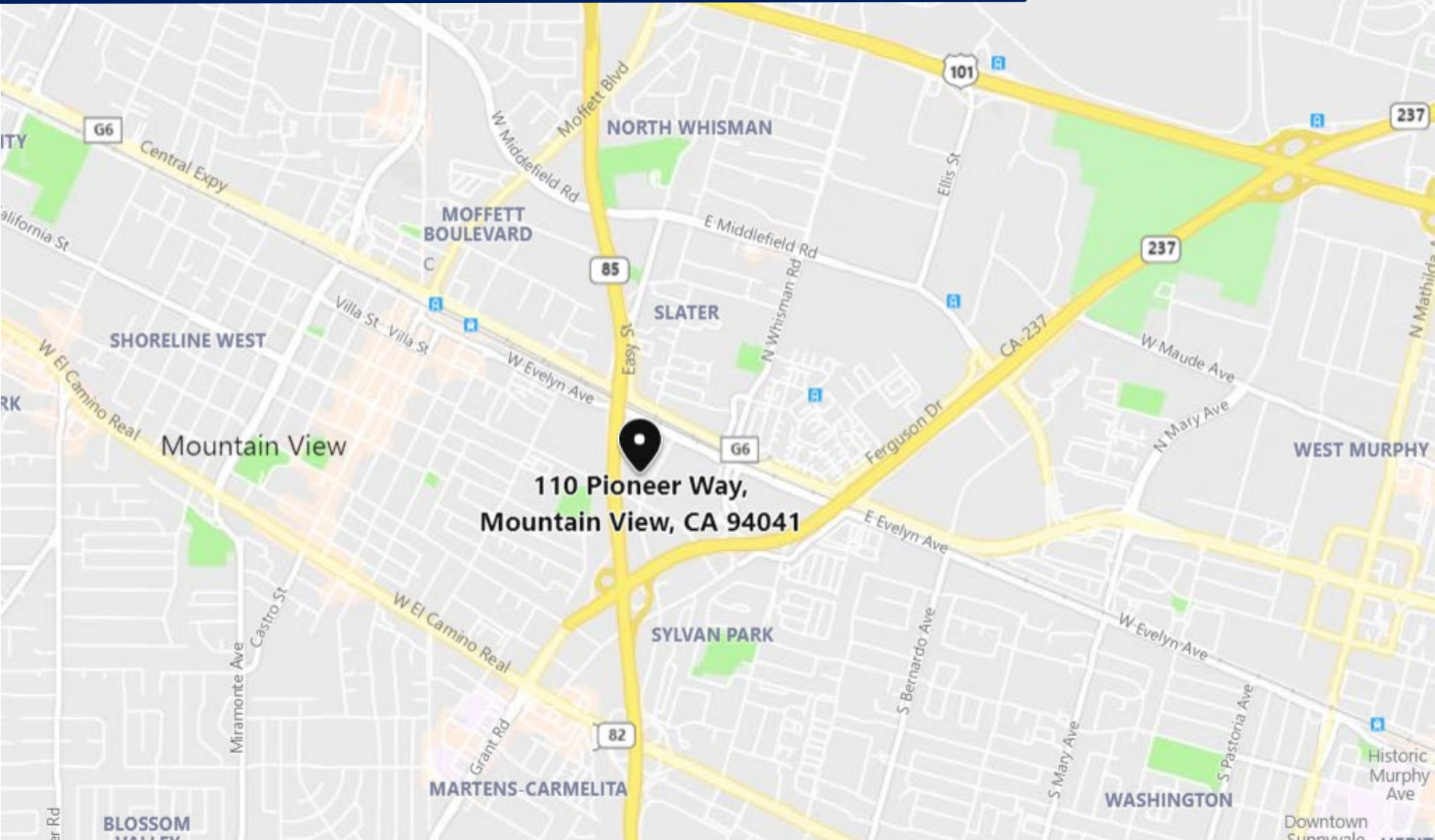


*110 Pioneer Way, Mountain View, CA*

[www.GlobalCommercialProp.com](http://www.GlobalCommercialProp.com)

RALPH LONGO  
408-529-1362  
DRE #01202211  
RLONGO@GLOBALCOMMERCIALPROP.COM

R&D / OFFICE AVAILABLE FOR LEASE: 2,700 – 17,688 SF



*110 Pioneer Way, Mountain View, CA*

[www.GlobalCommercialProp.com](http://www.GlobalCommercialProp.com)

RALPH LONGO  
408-529-1362

DRE #01202211

[RLONGO@GLOBALCOMMERCIALPROP.COM](mailto:RLONGO@GLOBALCOMMERCIALPROP.COM)

## DISCLAIMER

The information contained in the following Marketing Brochure is proprietary and strictly confidential. It is intended to be reviewed only by the party receiving it from Global Commercial Properties, Inc. and should not be made available to any other person or entity without consent of Global Commercial Properties, Inc. This information has been prepared to provide summary and information to prospective purchasers, for the solicitation of interest and is not an offer to sell the property. Only a fully executed Real Estate Purchase Agreement shall bind the property.

The information provided herein is deemed to be accurate and to establish only a preliminary level of interest in the subject property. The information contained herein is not a substitute for thorough due diligence investigation. Global Commercial Properties, Inc. has not made any independent investigation, and makes no warranty or representation, with respect to the present or future use or zoning of the subject property, the future projected financial performance of the property, the size measurements or boundaries of the property and improvements, ADA-related issues or compliance, the presence or absence of contaminating or hazardous substances, PCB's or asbestos, the compliance with State, Federal, County or municipal law, nor the physical condition of the improvements thereon. The information contained in this Marketing Brochure has been obtained from sources believed to be reliable; however, Global Commercial Properties, Inc. has not verified, and will not verify, any of the information contained herein, nor has Global Commercial Properties, Inc. conducted any investigation regarding these matters and makes no warranty or representation whatsoever regarding the accuracy or completeness of the information provided. Prospective purchaser is advised and agrees to make its own investigation and determination regarding all matters affecting the value, condition, utility, size, compliance with Laws, and all aspects of the property's desirability and suitability for purchasers' intentions.

The information contained herein is subject to change without notice and the recipient of these materials shall not look to the Owner or the Broker, Global Commercial Properties, Inc., or any of their officers, employees, representatives, independent contractors or affiliates, for the accuracy or completeness thereof.

Property will be shown by appointment only.

110 Pioneer Way, Mountain View, CA 94041



RALPH LONGO  
408-529-1362  
DRE #01202211  
RLONGO@GLOBALCOMMERCIALPROP.COM