

FULL BUILDING REHAB NOW COMPLETE | MOVE IN READY

1441 S. CARLOS AVENUE | ONTARIO | CALIFORNIA



FREESTANDING INDUSTRIAL BUILDING
±18,118 SF | FOR LEASE

 JONESINDUSTRIALTEAM.COM

EXCLUSIVELY LISTED BY THE:

JONES
INDUSTRIAL TEAM

KEN JONES, SIOR
Senior Vice President/Principal
kjones@lee-assoc.com
909.373.2726
DRE #01703262

BEN PALITZ
Senior Vice President/Principal
bpalitz@lee-assoc.com
909.373.2910
DRE #02093182

COLE MCFETTERS
Associate
cmcfetters@lee-assoc.com
909.373.2733
DRE #02203508

LEE & ASSOCIATES - ONTARIO |
3535 INLAND EMPIRE BOULEVARD | ONTARIO | CALIFORNIA | 91764
909.989.7771 | lee-associates.com | CORP ID #00976995

 **LEE & ASSOCIATES**
COMMERCIAL REAL ESTATE SERVICES

PROPERTY OVERVIEW

KEY HIGHLIGHTS



±18,118 SF
BUILDING SIZE



±4,500 SF
HIGH IMAGE TWO-STORY OFFICE



ONE (1)
PORTABLE DOCK HIGH POSITION
(OPTIONAL)



24'
MINIMUM CLEARANCE



2
GROUND LEVEL LOADING DOORS



400
AMPS (EXPANDABLE) (VERIFY)



LARGE
FULLY FENCED & SECURED YARD



FIRE SPRINKLERS
(.45 GPM/3,000 SF) (VERIFY)

PROPERTY HIGHLIGHTS

- CORNER IDENTITY ALONG MISSION BLVD
- ZONED FOR INDUSTRIAL USE (VERIFY)
- SITUATED ON A 1-ACRE LOT
- IMMEDIATE ACCESS TO I-15, I-10, AND CA-60 FREEWAYS
- PRIME ONTARIO LOCATION WITH IMMEDIATE ACCESS TO THE ONTARIO INTL' AIRPORT



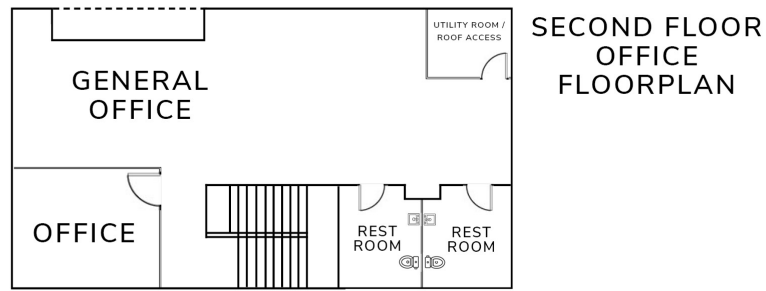
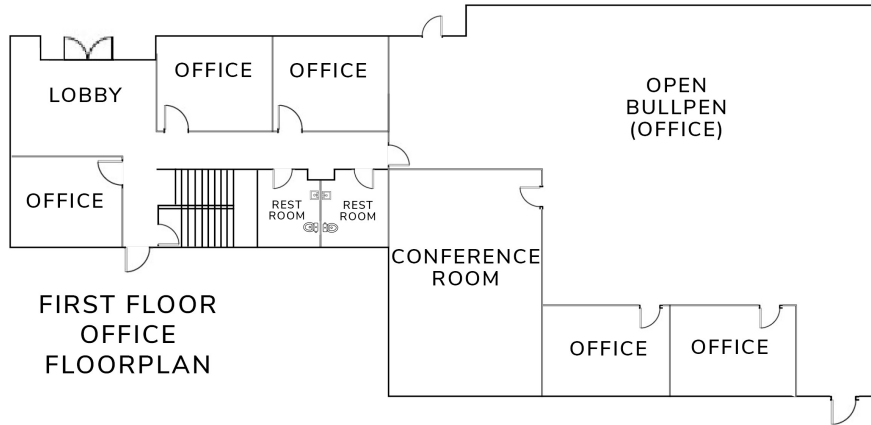
PROPERTY PHOTOS



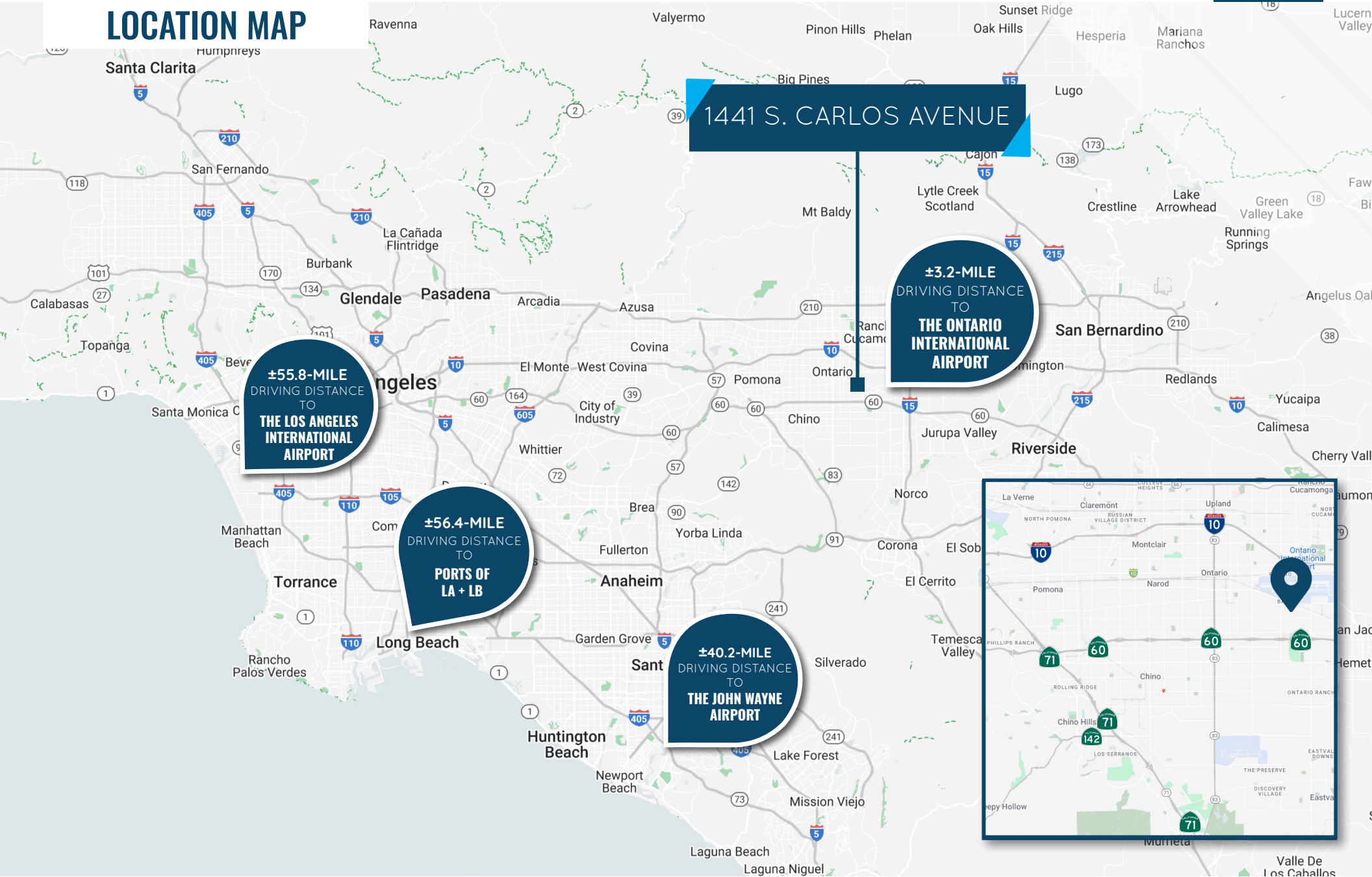
LEE & ASSOCIATES - ONTARIO I
3535 INLAND EMPIRE BOULEVARD I ONTARIO I CALIFORNIA I 91764
909.989.7771 | lee-associates.com | CORP ID #00976995



PROPERTY SITE PLAN



LOCATION MAP



LEE & ASSOCIATES - ONTARIO |
 3535 INLAND EMPIRE BOULEVARD | ONTARIO | CALIFORNIA | 91764
 909.989.7771 | lee-associates.com | CORP ID #00976995



All information furnished regarding property for sale, rental or financing is from sources deemed reliable, but no warranty or representation is made to the accuracy thereof and same is submitted to errors, omissions, change of price, rental or other conditions prior to sale, lease or financing or withdrawal without notice. No liability of any kind is to be imposed on the broker herein.