

BOYLSTON
557
STREET

850 - 2,912 SF
Office Space For Lease

 Boston Realty Advisors



AVAILABILITY

2,912 SF

MEZZANINE

1,307 SF

2ND FLOOR

850 SF

2ND FLOOR

TIMING

Immediate

MEZZANINE

5/1/26

2ND FLOOR

RENT & TERM

Negotiable

ALL SPACES

DRIVING DISTANCES

13 min

LOGAN AIRPORT

4 min

STORROW DRIVE

4 min

I-90

12 min

I-93

WALKING DISTANCES

2 min

COPLEY STATION

2 min

9, 39, & 57 BUS

6 min

BACK BAY STATION

6 min

THE PRU



WALKER'S PARADISE

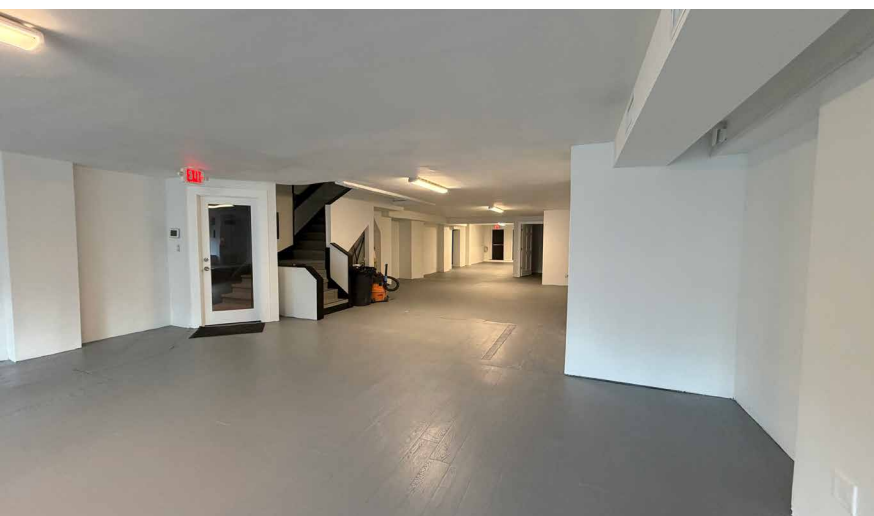
100 / 100

RIDER'S PARADISE

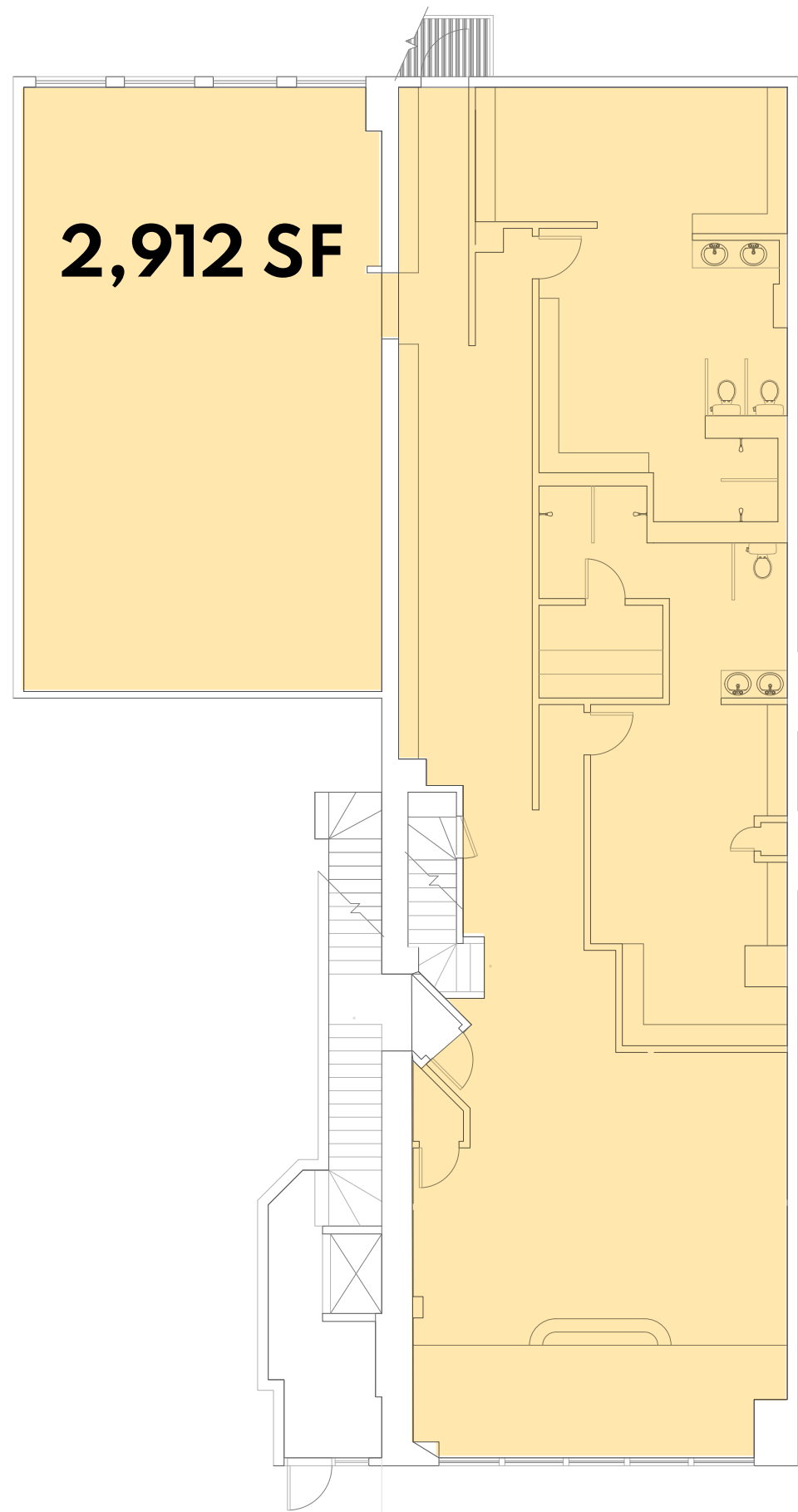
99 / 100

VERY BIKEABLE

85 / 100

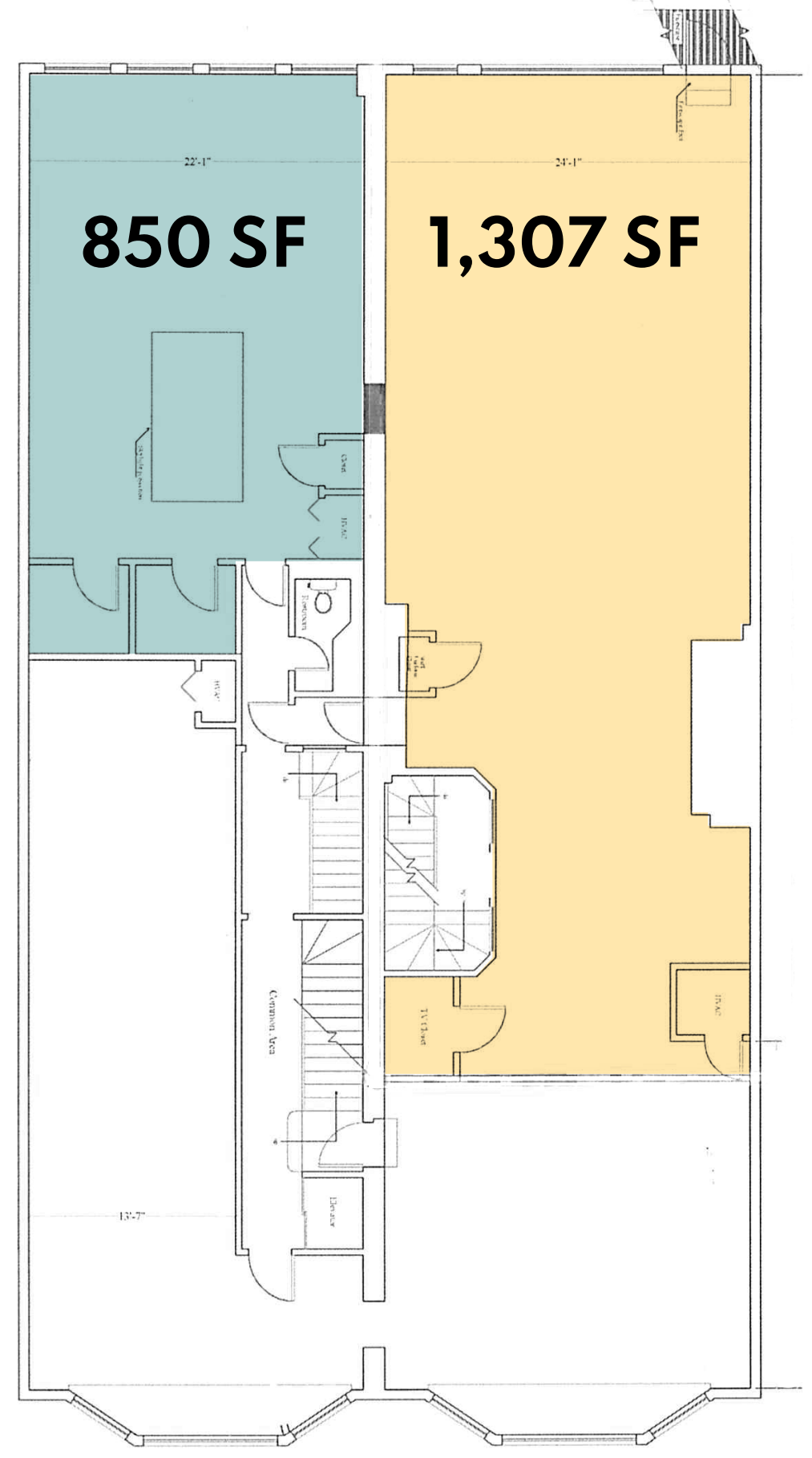


MEZZANINE



← BOYLSTON STREET →

2ND FLOOR



← BOYLSTON STREET →



BOYLSTON
557
STREET

WILLIAM H. CATLIN, JR.
Managing Director & Senior Partner
617.850.9606
wcatlin@bradvisors.com

 **Boston Realty Advisors**

136 Newbury Street | Boston, MA 02116 | 617.375.7900 | BRAdvisors.com

© Copyright Boston Realty Advisors. All rights reserved. The information contained here has been obtained through sources deemed reliable but cannot be guaranteed as to its accuracy. Any information of special interest should be obtained through independent verification.

Available for takeout
and free delivery with
the Dig app.