

1155

AVENUE OF THE AMERICAS
A VIEW FOR EVERY VISION

PARTIAL FLOOR 11 SUITE 1150 9,671 SF



ENTRANCE



LOBBY

AVAILABILITY FEATURES

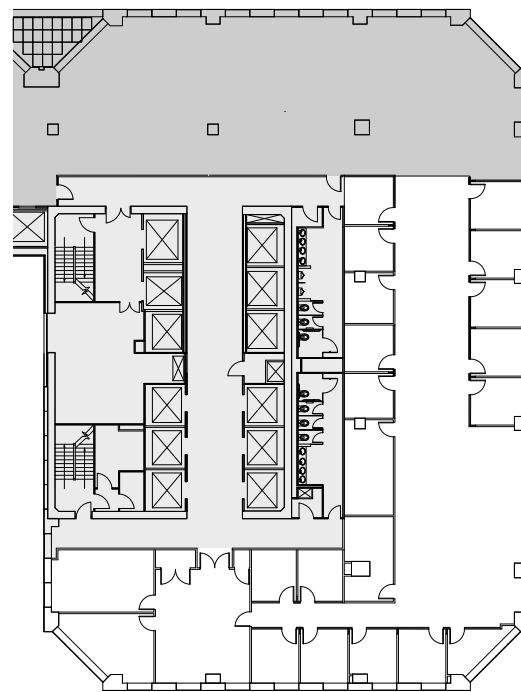
- Built Space With 19 Offices and 2 Conference Rooms
- Efficient Blended Open/Office Layout

PROPERTY FEATURES

- New Landscaped Plaza, Building Entrance, and Lobby
- Elevator Modernization Including Destination Dispatch Controls
- New Energy-Efficient Curtain Wall With Floor-to-Ceiling Clear Glazing at Chamfered Corners
- New Low-Iron Energy-Efficient Casement Windows
- Certified LEED Gold Under LEED v4 Existing Buildings: Operations + Maintenance
- Located at the Convergence of Bryant Park and Corporate Row — Mere Minutes From Grand Central Terminal, 16 Subway Lines, and Some of NYC's Best Dining and Entertainment

AS-BUILT PLAN

West 45th Street



Avenue of the Americas

West 44th Street



LEASING CONTACTS

Rocco Romeo
212.257.6630
RRomeo@durst.org

Nora Caliban
212.789.6029
NCaliban@durst.org

Thomas Bow
212.257.6610
TBow@durst.org

1155Aoa.com