



 [View Online](#)

frost
meadowcroft

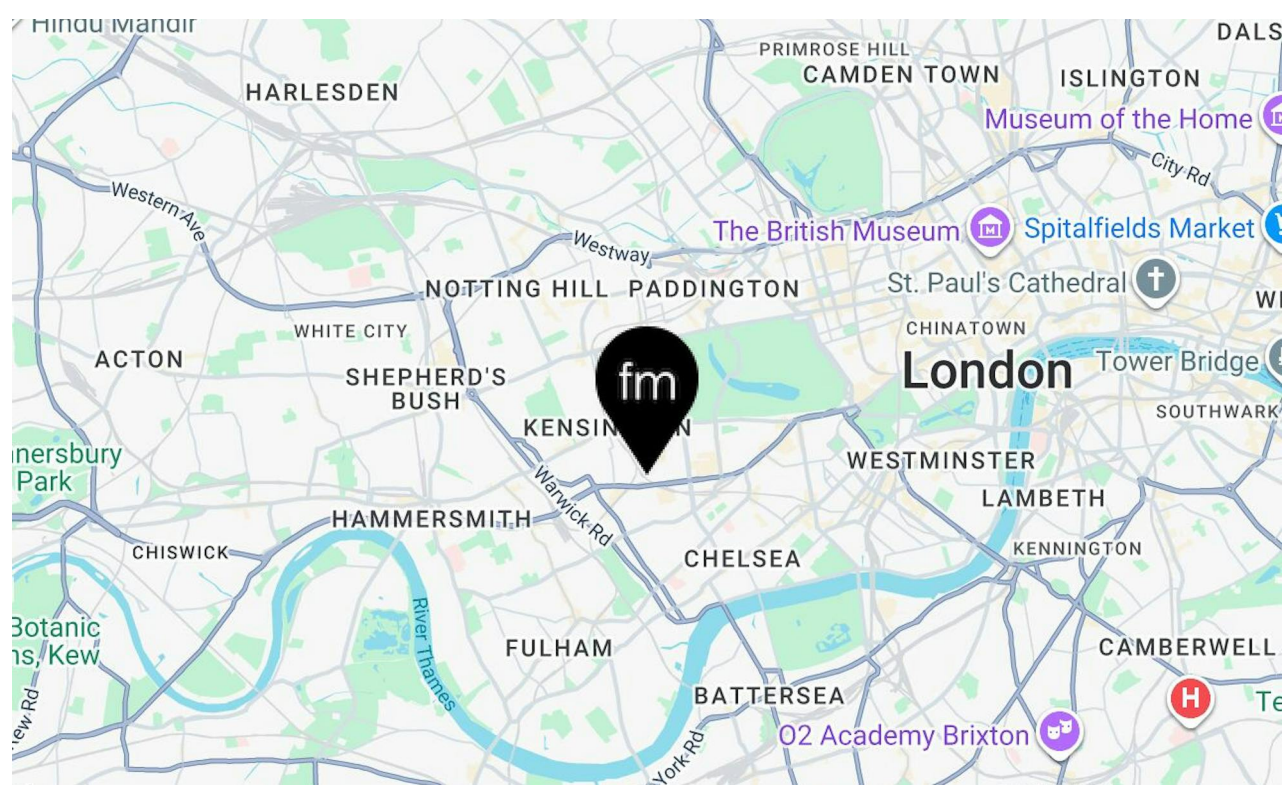
27 EMPERORS GATE, SOUTH KENSINGTON, SW7 4HS
527 SQ FT (48.96 SQ M)

LOCATION

The property is situated on the South side of Emperor's Gate off Cromwell Road. Only a 3-minute walk to Gloucester Road tube station (Circle, District & Piccadilly Lines). The property also benefits from being a short walk to the many fantastic food and drink options on and around Gloucester Road such as HJEM Coffee, The Queens Arm's Pub and De Mario's Italian restaurant.

DESCRIPTION

This newly refurbished lower ground floor office in an elegant Victorian terraced building overlooking Emperor's Gate is available for lease. Benefiting from excellent natural light, solid wooden flooring, self-contained meeting room, kitchenette, and terrace.





frost

meadowcroft

AVAILABILITY

The accommodation comprises the following areas:

Name	sq ft	sq m	Availability
Lower Ground - Lower Ground Suite	527	48.96	Available
Total	527	48.96	



RENT

£47.44 per sq ft (£25,000 per Annum)

BUSINESS RATES

Rateable value is £22,250

Rates Payable £21.90 per sq ft

SERVICE CHARGE

£9.50 per sq ft

EPC

D

ADDITIONAL INFORMATION

[VIEW WEBSITE](#)

CONTACT

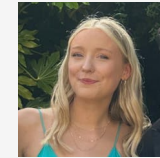


Simon Kibble

020 8748 1200 | 07774

646393

skibble@frostmeadowcroft.com



Katie Joyner

020 8748 1200 | 07502

542997

kjoyner@frostmeadowcroft.com



Date of Publication: March 2026

Misrepresentation Act 1967: These particulars are believed to be correct but their accuracy is not guaranteed and they do not form part of any contract. Unless otherwise stated, all prices and rents are quoted exclusive of VAT.