

3933 PLAINFIELD AVENUE NE
GRAND RAPIDS, MICHIGAN

RETAIL FOR SALE
4,340 Square Feet Available



**SIGNATURE
ASSOCIATES**
KNOW SIGNATURE | KNOW RESULTS

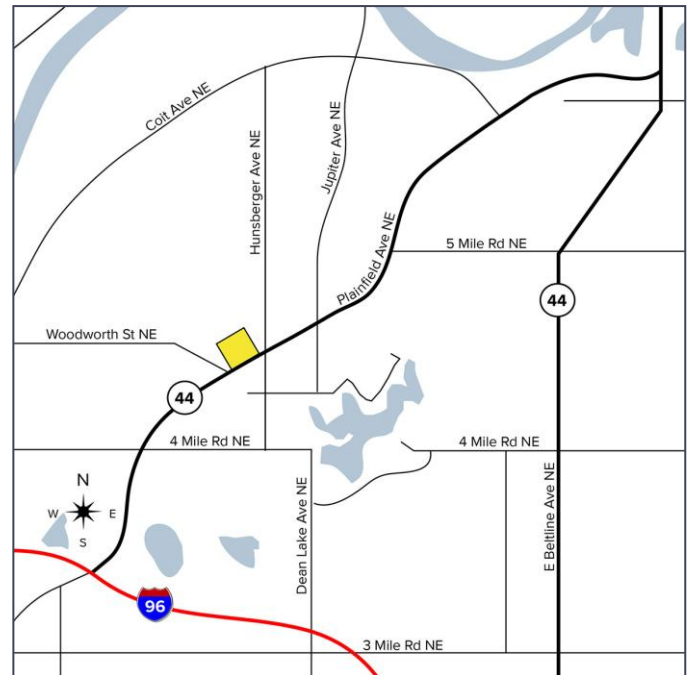
MULTI-TENANT BUILDING



PROPERTY FEATURES

- 4,340 total square feet available
- Located on 0.422 acres
- Zoned C-1
- 10' Ceilings
- Security system in place
- Built in 1985; remodeled 2026
- Sale Price: \$499,000 (\$114.98/sf)

Comments: Prime retail opportunity along busy Plainfield Avenue for sale. Excellent frontage with over 15+ parking spaces. Large commercial building divided into 4 units and suites can be combined. Great for office professional, general retail, liquor store, cafe, clothing store, restaurant or more. Alternatively, great for an investor to renovate and lease out suites.

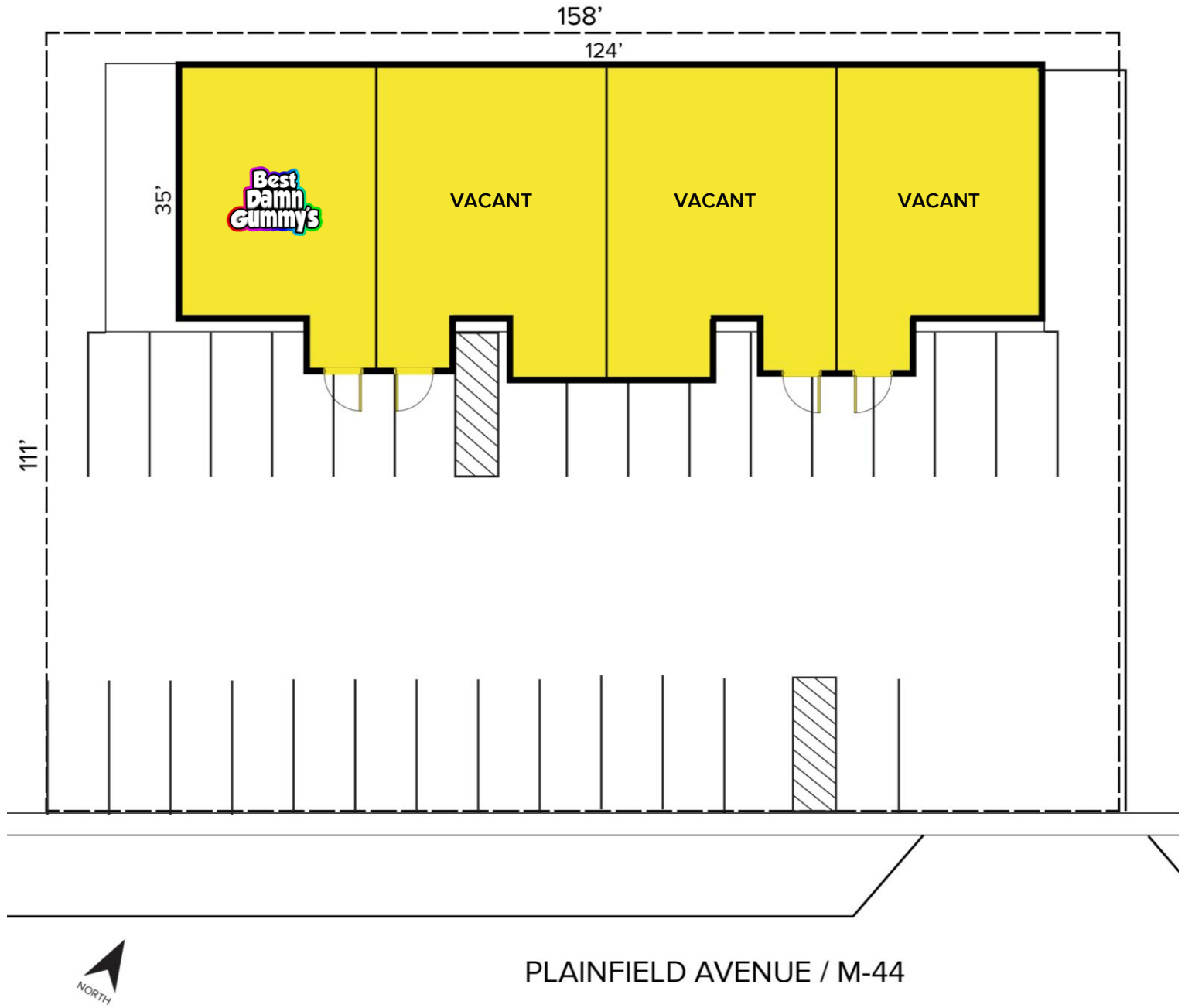


For more information, please contact:

JOE RIZQALLAH
(616) 822 6310
jrizqallah@signatureassociates.com

SIGNATURE ASSOCIATES
1188 East Paris Ave SE, Suite 220
Grand Rapids, MI 49546
www.signatureassociates.com

Site Plan



For more information, please contact:
JOE RIZQALLAH
(616) 822 6310
jrizqallah@signatureassociates.com

SIGNATURE ASSOCIATES
1188 East Paris Ave SE, Suite 220
Grand Rapids, MI 49546
www.signatureassociates.com

3933 Plainfield Avenue NE – Grand Rapids, Michigan

Retail for Sale

4,340
Square Feet
AVAILABLE

Aerial



DEMOGRAPHICS

	POPULATION	MED. HH INCOME
1 MILE	7,137	\$87,939
3 MILE	48,471	\$93,178
5 MILE	126,686	\$86,046

TRAFFIC COUNTS (TWO-WAY)

24,663	Plainfield Ave southwest of Hunsberger/Vineyard
22,736	Plainfield Ave northeast of Hunsberger/Vineyard
4,021	Hunsberger Ave north of Plainfield Ave
24,464	Plainfield Ave northeast of Woodward Ave

For more information, please contact:

JOE RIZQALLAH
(616) 822 6310
jrizqallah@signatureassociates.com

SIGNATURE ASSOCIATES
1188 East Paris Ave SE, Suite 220
Grand Rapids, MI 49546
www.signatureassociates.com