

FOR LEASE



**METROPOLITAN PACIFIC**  
REAL ESTATE GROUP



**2,184 SF Creative Office**  
**325 Wilshire Boulevard, Suite 202**  
**Santa Monica, CA**

- Bright and airy creative space in the heart of DTSM
- Large private patio (not included in RSF)
- Lots of natural light and operable windows
- 7 parking spots in modern City parking structure north of Wilshire
- Tremendous amenities, one-half block from Santa Monica's Third Street Promenade
- Neighboring tenants include TenderGreens, Tocaya, Lemonade, John Reed Fitness, Cava, Uovo, Shake Shake, Mendicino Farms, Sidecar Doughnuts & Coffee, SoulCycle.
- Available August 1

**CONTACT**

**310 395 7300**

**METROPOLITAN PACIFIC**

DRE #01395401

**Gary Steinhardt**

DRE #02151907

[gsteinhardt@metpac.com](mailto:gsteinhardt@metpac.com)

**John Warfel**

DRE# 01184386

[jwarfel@metpac.com](mailto:jwarfel@metpac.com)

REPRESENTED BY METROPOLITAN COMMERCIAL REAL ESTATE SERVICES

Please do not disturb existing tenant. Shown by appointment only.

# 325 Wilshire Blvd. Santa Monica, CA

Open floor plan  
with large  
private balcony

Plentiful nearby  
amenities

Parking less  
than 100' away  
in modern  
structure



## CONTACT

**310 395 7300**

**METROPOLITAN PACIFIC**

DRE #01395401

**Gary Steinhardt**

DRE #02151907

[gsteinhardt@metpac.com](mailto:gsteinhardt@metpac.com)

**John Warfel**

DRE# 01184386

[jwarfel@metpac.com](mailto:jwarfel@metpac.com)

REPRESENTED BY METROPOLITAN COMMERCIAL REAL ESTATE SERVICES

Please do not disturb existing tenant. Shown by appointment only.

# 325 Wilshire Blvd. Santa Monica, CA

Large Balcony

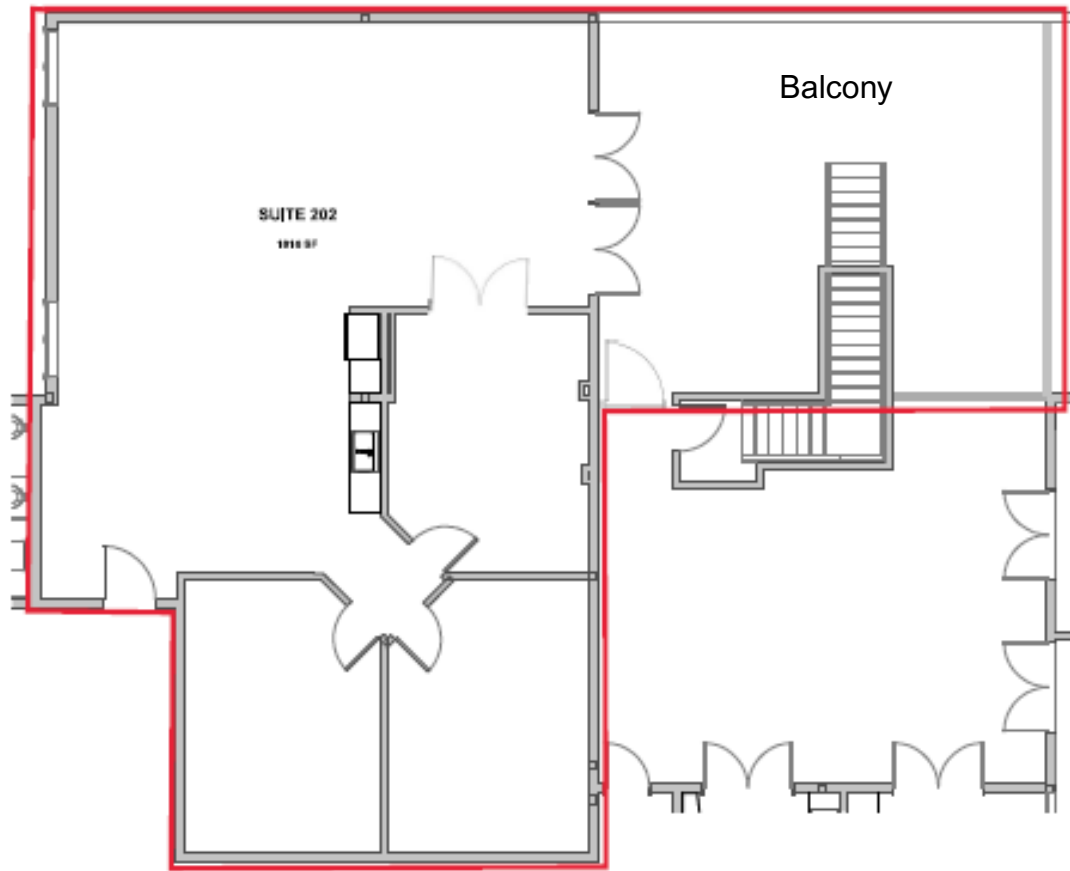
Operable  
Windows

Ample open area  
with high ceilings

One Conference  
Room

Two Private  
Offices

Current Space configuration



## CONTACT

**310 395 7300**

**METROPOLITAN PACIFIC**

DRE #01395401

**Gary Steinhardt**

DRE #02151907

[gsteinhardt@metpac.com](mailto:gsteinhardt@metpac.com)

**John Warfel**

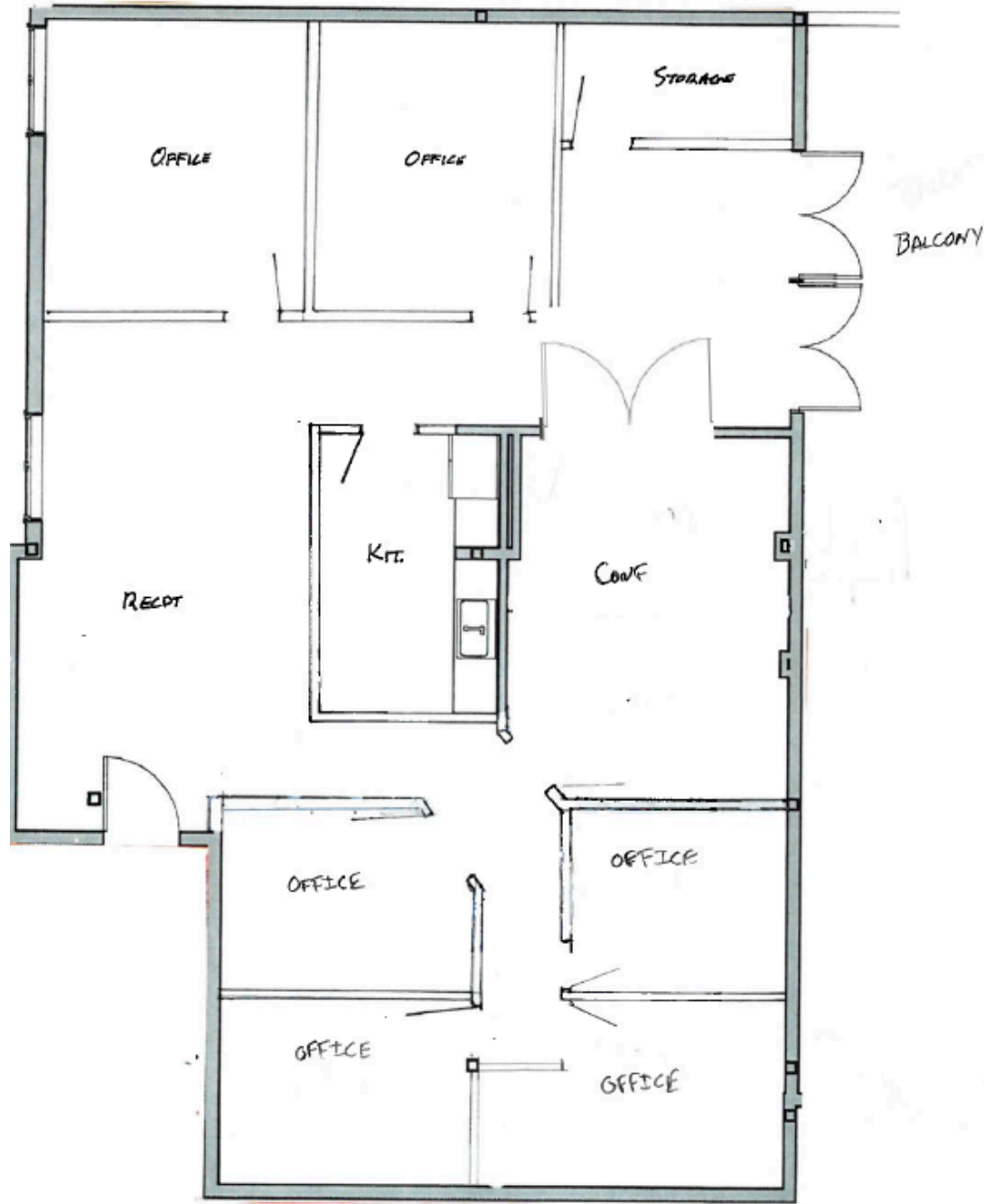
DRE# 01184386

[jwarfel@metpac.com](mailto:jwarfel@metpac.com)

REPRESENTED BY METROPOLITAN COMMERCIAL REAL ESTATE SERVICES

Please do not disturb existing tenant. Shown by appointment only.

Conceptual floor  
plan with  
additional offices



**CONTACT**

**310 395 7300**

**METROPOLITAN PACIFIC**

DRE #01395401

**Gary Steinhardt**

DRE #02151907

gsteinhardt@metpac.com

**John Warfel**

DRE# 01184386

jwarfel@metpac.com