

CBRE



# 2831 S SANTA FE

VERNON, CA 90058

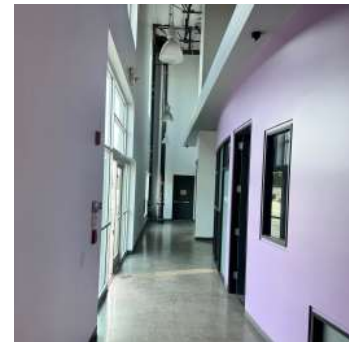
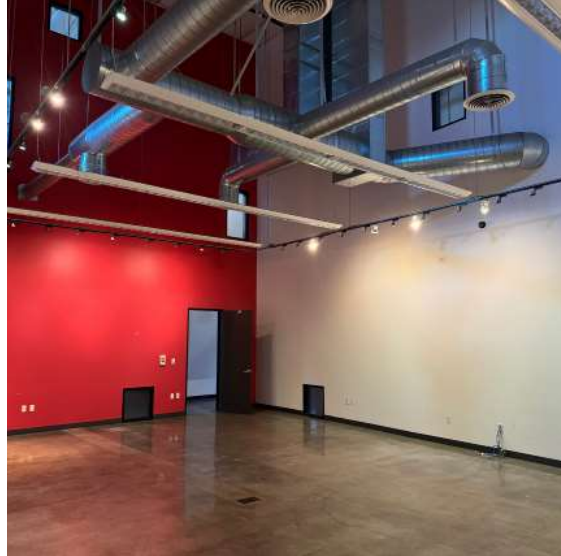
AVAILABLE FOR LEASE  
38,112 SF INDUSTRIAL BUILDING

# property features

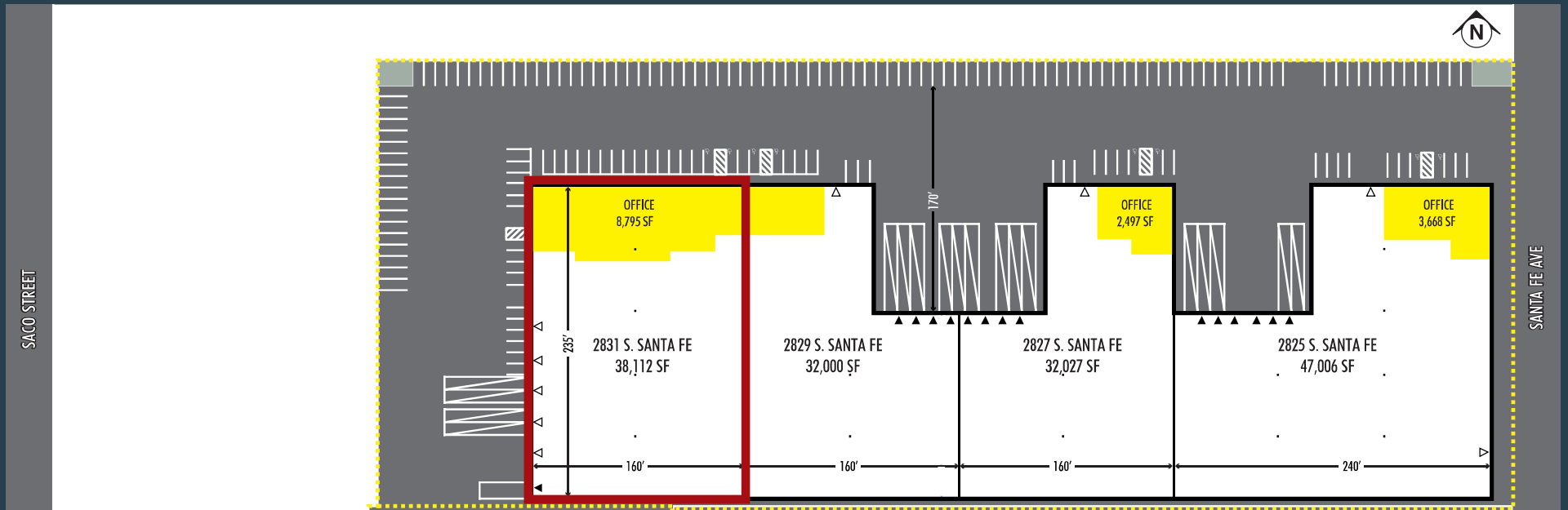
- » ±38,112 SF Industrial Building
- » Best Class A Ground Level Building in Central LA
- » 1 Dock High Door and 5 Ground Level Doors
- » 28' Clearance Height
- » .45/3000 Sprinkler Calculation
- » 8,795 SF Creative Offices (Can Be Reduced)
- » Great North Vernon Location



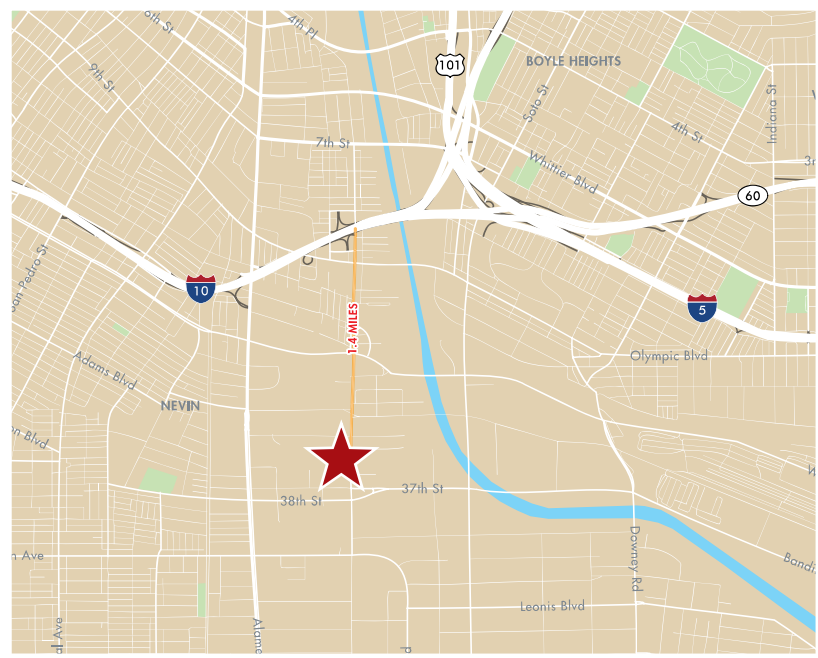
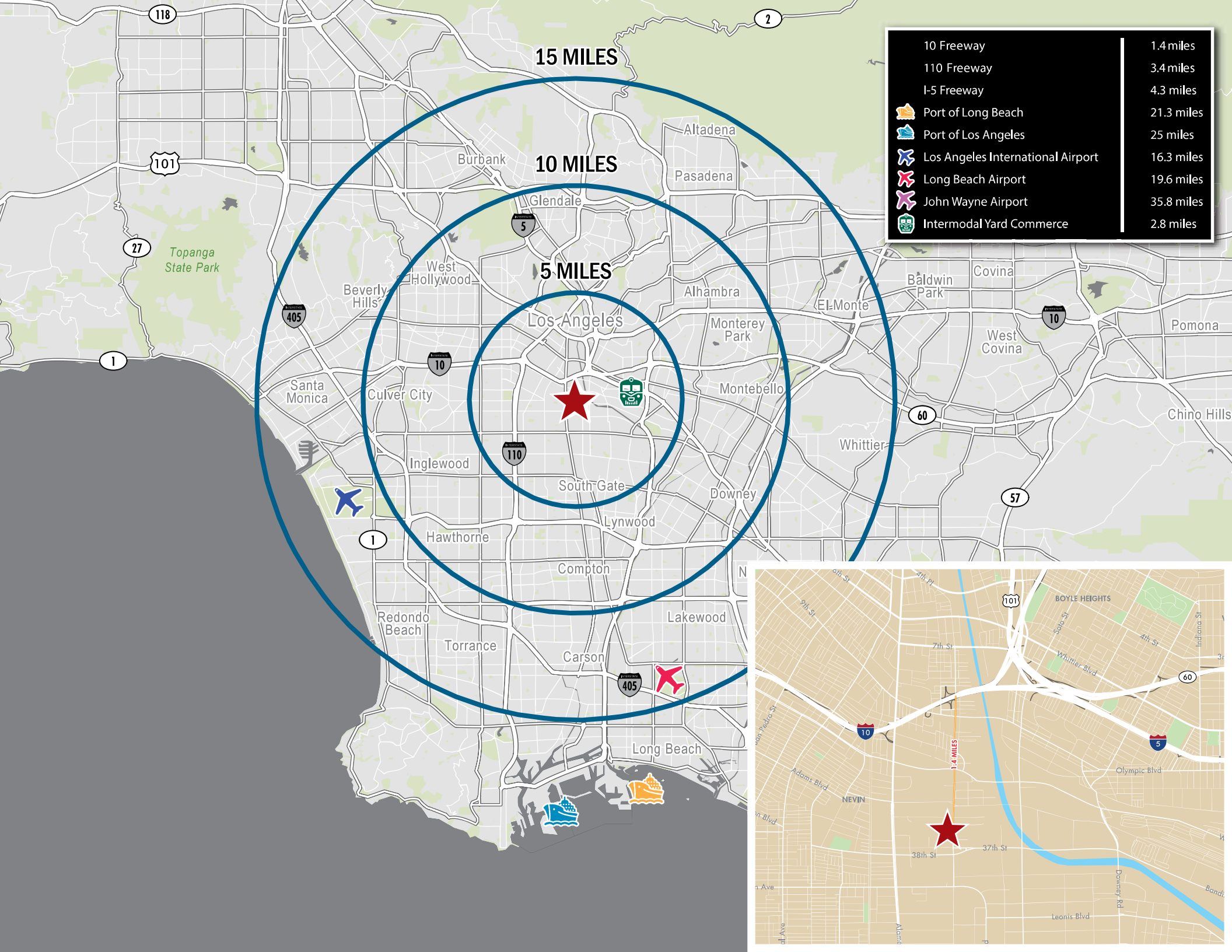
# property photos



# site plan



LEGEND	
▲	Dock High Doors
△	Grade Level Doors
■	Office Space
■	Column



# contact

**JEFF STEPHENS**

+1 213 613 3761  
jeffrey.stephens@cbre.com  
Lic. 01051764

**JACK MERGENTHALER**

+1 310 363 4946  
jack.mergenthaler@cbre.com  
Lic. 01942974

**EVAN CRAWFORD**

+1 213 613 3332  
evan.crawford@cbre.com  
Lic. 02105059

**JOHN STEPHENS**

+1 213 613 3418  
john.r.stephens@cbre.com  
Lic. 02159924



© 2025 CBRE, Inc. All rights reserved. This information has been obtained from sources believed reliable, but has not been verified for accuracy or completeness. Any projections, opinions, or estimates are subject to uncertainty. The information may not represent the current or future performance of the property. You and your advisors should conduct a careful, independent investigation of the property and verify all information. Any reliance on this information is solely at your own risk. CBRE and the CBRE logo are service marks of CBRE, Inc. and/or its affiliated or related companies in the United States and other countries. All other marks displayed on this document are the property of their respective owners. Photos herein are the property of their respective owners and use of these images without the express written consent of the owner is prohibited.

**CBRE**