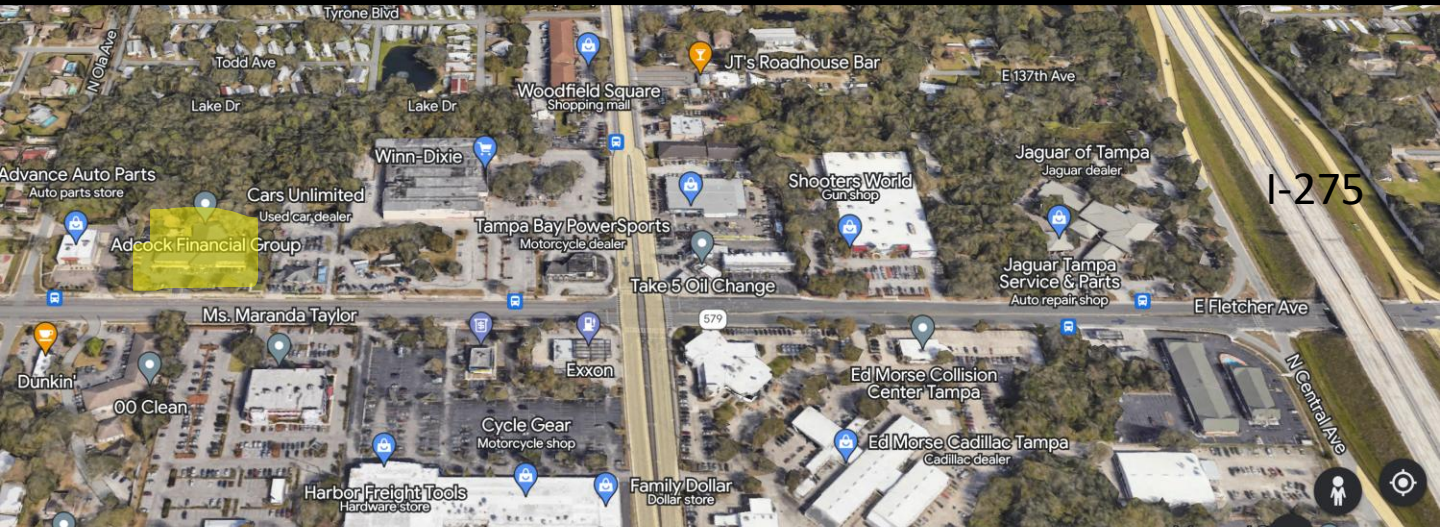


# OFFICE SPACE FOR LEASE

## 313 W. Fletcher Avenue

### 6,556 SF

### TAMPA, FLORIDA



This 6,556 SF space is ideal for most professional office uses. The unit is ready for occupancy. Suite contains an attractive combination of private offices, bull pen area, break room, entry foyer area, business office, server room, and a conference room. Space offers and abundance of natural light as the building has windows on 3 of the 4 sides of the premises.

Square FeetL 6,556  
 Building Size: 16,434  
 # Tenants: 3  
 Parking: 4.75/1000  
 Zoning: PD

Rental Rate: \$17.50 NNN  
 Year Built: 1999  
 Renovated: 2022  
 Construction: Masonry

**Raymond A. Ploucher, CCIM**  
 813-637-8888 Office 813-774-1788 Mobile  
[rayploucher@reactampa.com](mailto:rayploucher@reactampa.com)  
**REAL ESTATE ADVISORY CORP. – TAMPA**  
 1300 N. Westshore Blvd., Suite 250, Tampa, FL 33607

NOTE: All efforts have been made to provide accurate information, nevertheless broker is not responsible for errors omissions, mis-statements of facts, and all potential prospective buyers should perform their own due diligence.

313 W. Fletcher Avenue, Tampa FL 33612  
3,676 SF – 100% Office

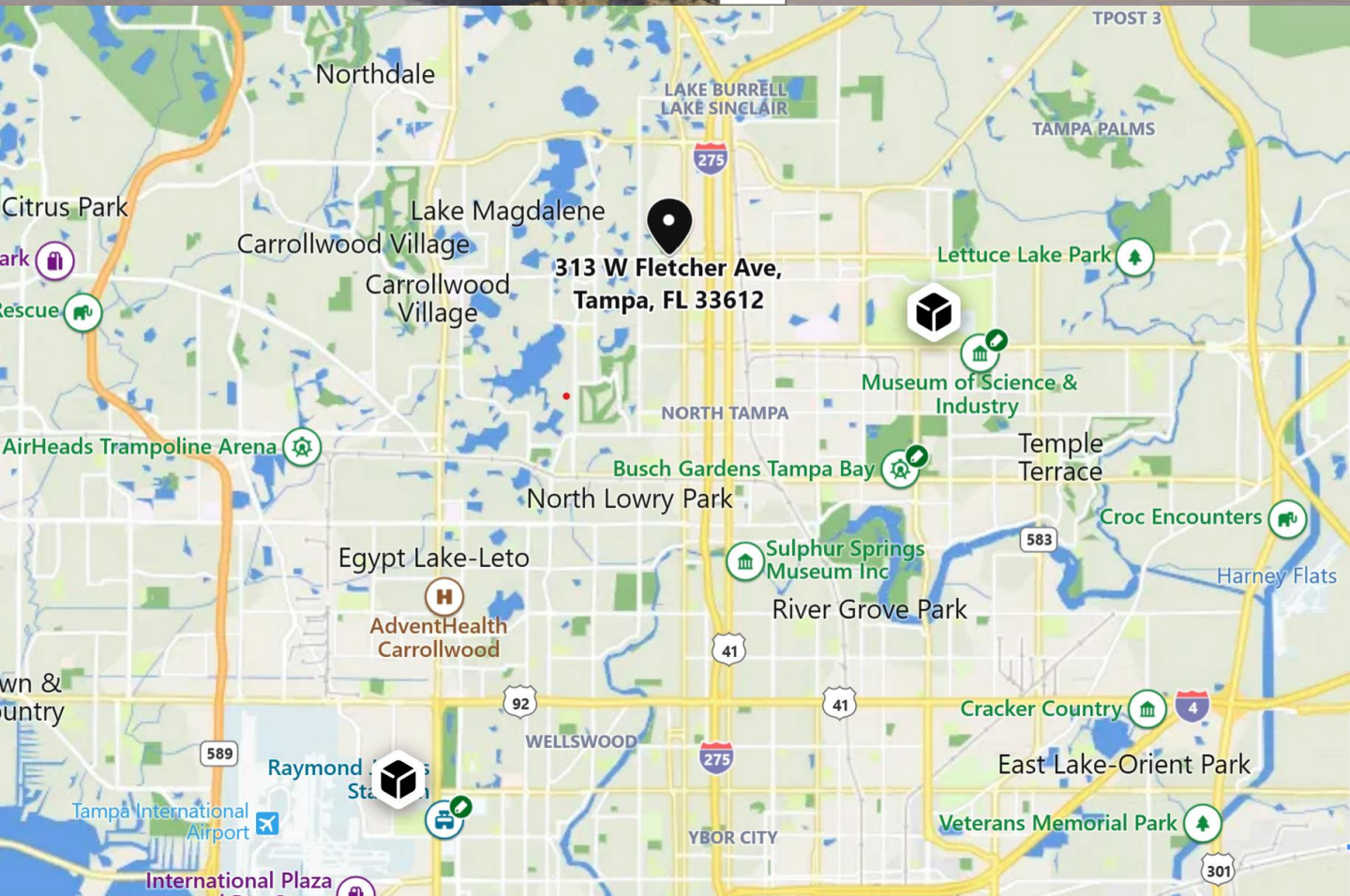


Adcock Financial Group

W Fletcher Ave

582A

W Fletcher



313 W Fletcher Ave,  
Tampa, FL 33612

Northdale

LAKE BURRELL  
LAKE SINCLAIR

TPOST 3

TAMPA PALMS

Citrus Park

Carrollwood Village

Carrollwood  
Village

Lettuce Lake Park

Rescue

AirHeads Trampoline Arena

Museum of Science &  
Industry

wn &  
untry

Egypt Lake-Leto

AdventHealth  
Carrollwood

Busch Gardens Tampa Bay

Temple  
Terrace

North Lowry Park

Sulphur Springs  
Museum Inc

River Grove Park

Croc Encounters

Harney Flats

589

Raymond  
Sta

92

WELLSWOOD

41

41

YBOR CITY

275

Cracker Country

East Lake-Orient Park

Veterans Memorial Park

301

International Plaza

Tampa International  
Airport

