

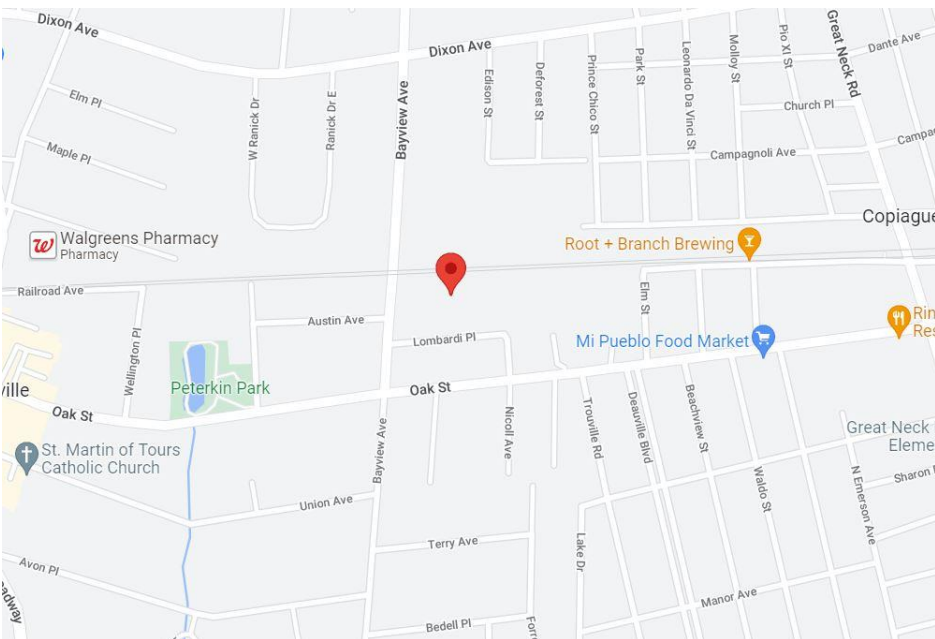
EXCLUSIVE

GREINER MALTZ
REAL ESTATE

315 Bayview Avenue | Amityville

+/- 206' X 123' Flat Land for Lease

Good for Vehicles and Contractors Yard with Town Permit



Please Contact Exclusive Broker:

TOM ATTIVISSIMO, CCIM

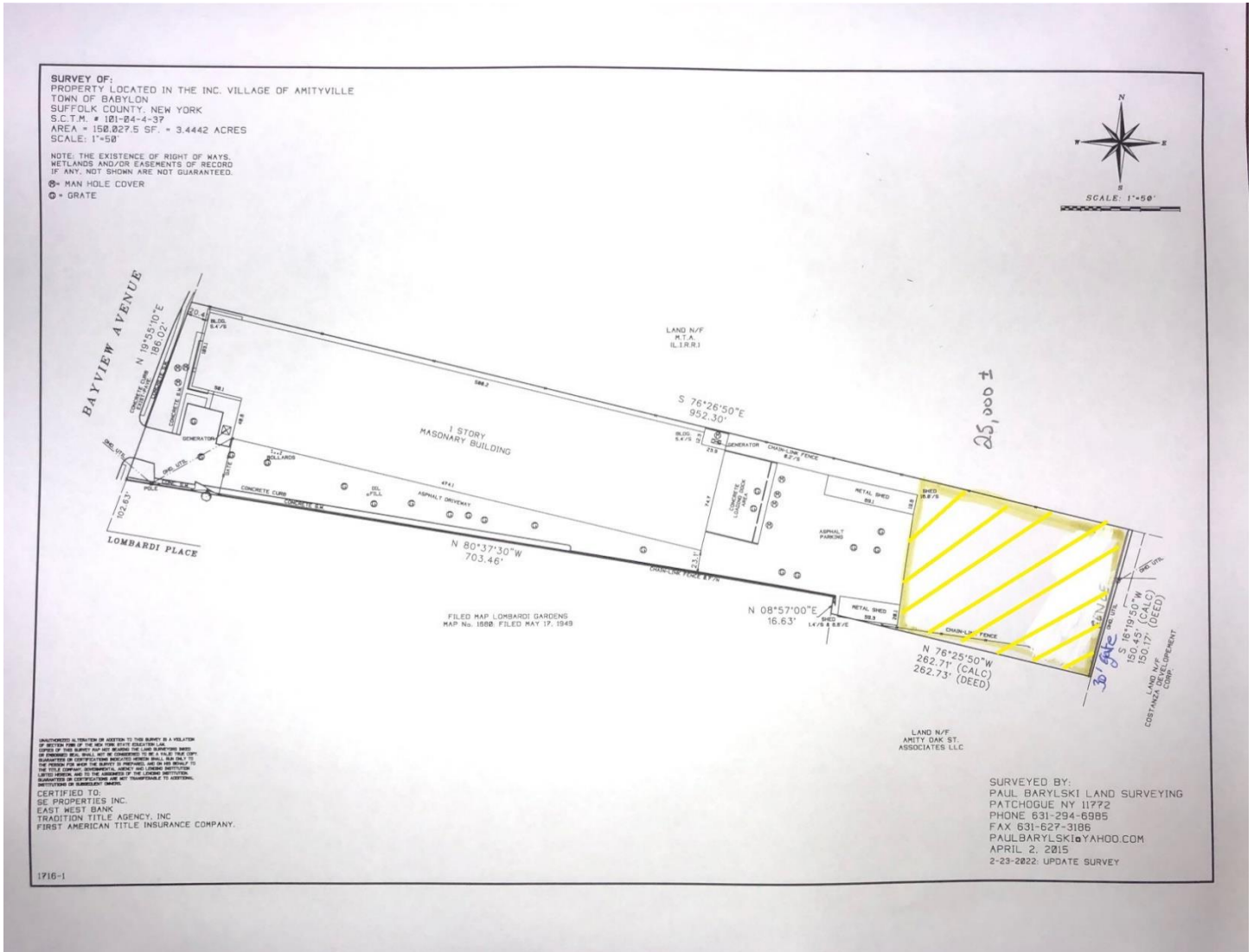
Mobile: (516) 606-6161 Office:

(516) 833-1401

tomatti@greiner-maltzofli.com

GREINER-MALTZ CO. OF LONG ISLAND, LLC 185 EXPRESS STREET | PLAINVIEW, NY 11803 (516) 364-1000

No warranty or representation, expressed or implied, is made as to the accuracy of the information contained herein, and same is submitted subject to errors, omissions, change of price, rental or other conditions, withdrawal without notice, and to any special listing conditions, imposed by our principals



GREINER-MALTZ CO. OF LONG ISLAND, LLC 185 EXPRESS STREET | PLAINVIEW, NY 11803 (516) 364-1000

No warranty or representation, expressed or implied, is made as to the accuracy of the information contained herein, and same is submitted subject to errors, omissions, change of price, rental or other conditions, withdrawal without notice, and to any special listing conditions, imposed by our principals