

FOR SALE OR LEASE
±6,400 SF INDUSTRIAL BUILDING

2341
EAST 8TH ST

LOS ANGELES | CA 90021



FOR MORE INFORMATION, CONTACT ▶

JEFFREY RINKOV

CEO | LIC NO 01238887

jrinkov@lee-associates.com

213.400.7941

SAM RINKOV

Senior Vice President | LIC NO 02132512

srinkov@lee-associates.com

818.324.4329

ETHAN RINKOV

LIC NO 02253349

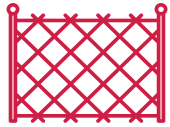
erinkov@lee-associates.com

818.325.5175

PROPERTY HIGHLIGHTS



Excellent Arts District Warehouse



Large Fenced Yard



2 Dock High Doors



Prime Location - Mateo & Santa Fe

SALE PRICE

\$2,200,000

LEASE RATE

\$1.25/SF GRS (\$8,000/Mo)



PROPERTY DETAILS



BUILDING SIZE

±6,400 SF



LAND SIZE

±11,396 SF / ±0.26 AC



YEAR BUILT

1952



ZONING

LAM3

PROPERTY TYPE

Industrial

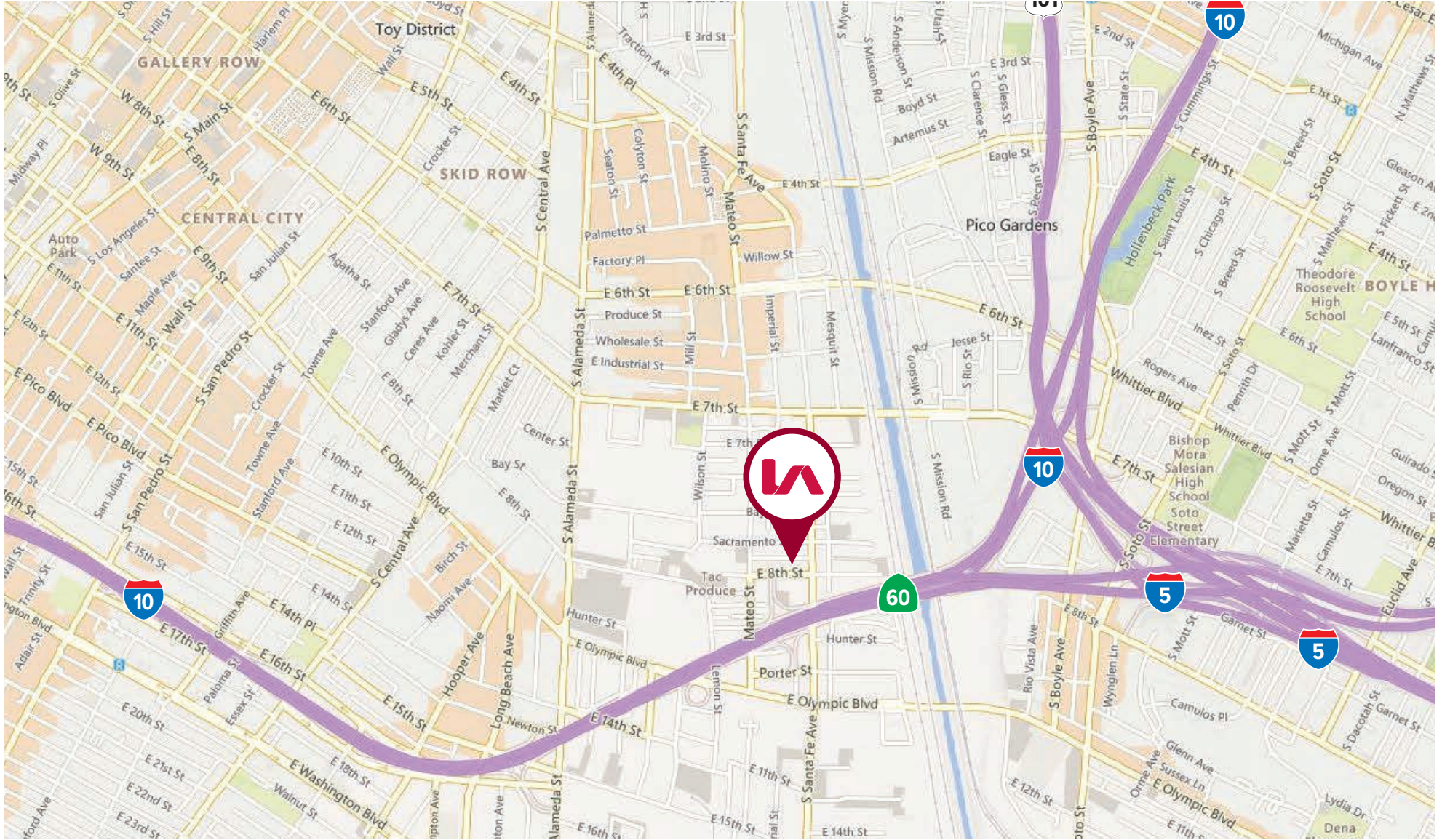


APN

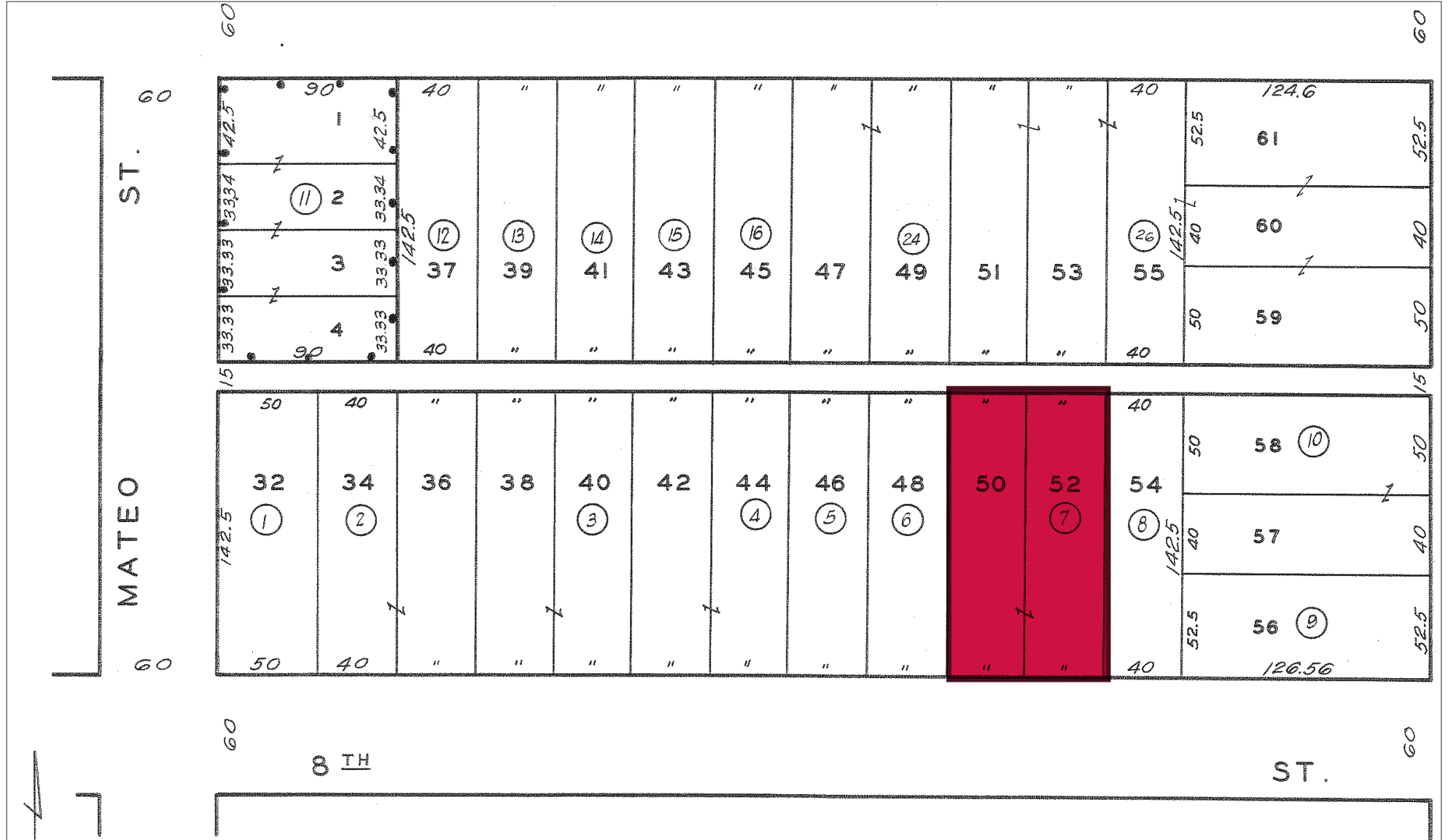
5166-010-007



PROPERTY LOCATION



PROPERTY PARCEL MAP



FOR SALE OR LEASE | ±6,400 SF INDUSTRIAL BUILDING

2341 E 8TH ST, LOS ANGELES, CA 90021

DOWNTOWN LOS ANGELES

2.08 MILES

BNSF RAILWAY HOBART YARD

2.34 MILES

LOS ANGELES INT'L AIRPORT

11.18 MILES

PORT OF LONG BEACH

19.88 MILES

PORT OF LOS ANGELES

20.91 MILES

FOR MORE INFORMATION, CONTACT ►

JEFFREY RINKOV

CEO | LIC NO 01238887

jrinkov@lee-associates.com

213.400.7941

SAM RINKOV

Senior Vice President | LIC NO 02132512

srinkov@lee-associates.com

818.324.4329

ETHAN RINKOV

LIC NO 02253349

erinkov@lee-associates.com

818.325.5175

Lee & Associates | Downtown Los Angeles

CORP ID 02174865

1201 N Main St

Los Angeles, CA 90012

The information has been furnished from sources which we deem reliable, but for which we assume no liability. Any projections, opinions, assumptions or estimates used are for example only and do not represent the current or future performance of the property. Buyers should consult with their independent advisors to determine if the property is suitable for their needs.