

1630-1634 SUNSET BLVD
1160 LOGAN ST

RETAIL FOR LEASE
IN ECHO PARK



ERIK KRASNEY

+1 323 270 1920

Lic. 01970585

erik.krasney@cbre.com

ZACHARY CARD

+1 310 497 5218

Lic. 01717802

zachary.card@cbre.com

SOPHIA KESSLER

+1 310 940 5545

Lic. 02168824

sophia.kessler@cbre.com

CBRE

PROPERTY HIGHLIGHTS



One of Echo Park's most iconic corners, across from Lassens and the Jensen's building



Adjacent to 172 parking spaces



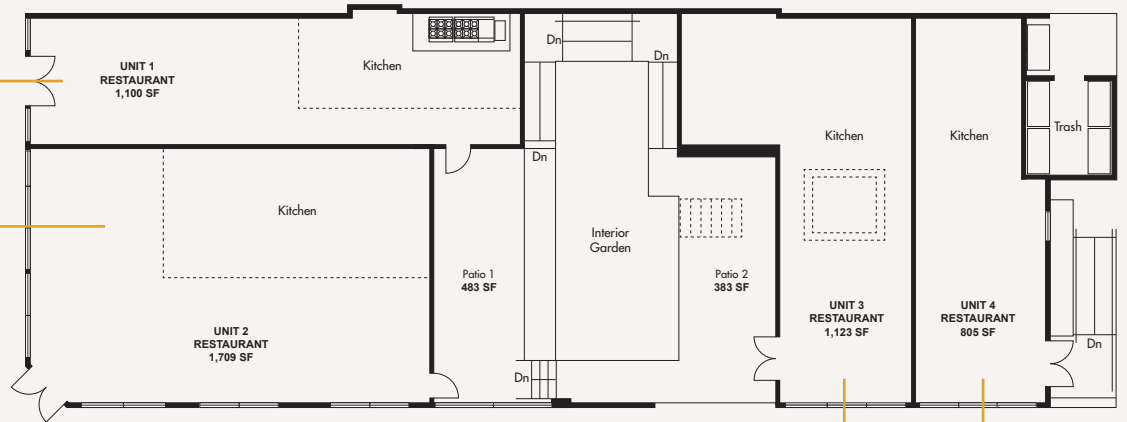
Undergoing major renovation including new storefronts, building systems, and patio



Delivery Q2 2026



SITE PLAN



SUNSET CORNER

Unit 2 — 2,220 SF



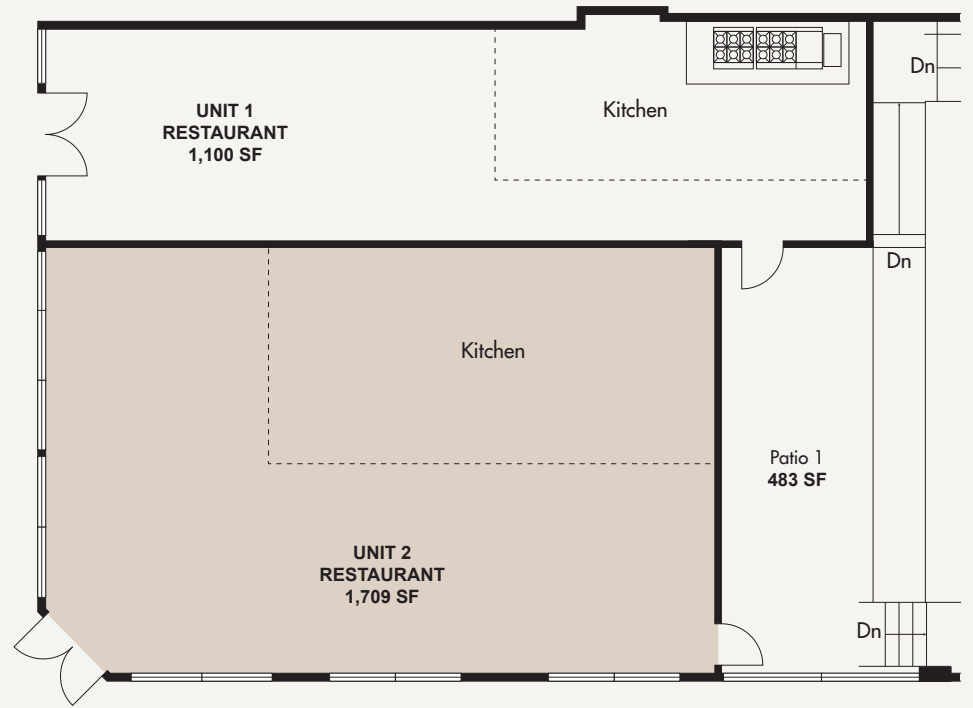
Prestigious corner suitable for retail & restaurant



New windows on the Logan side



Façade refurbishment underway



SUNSET CORNER



RESTAURANT SPACE

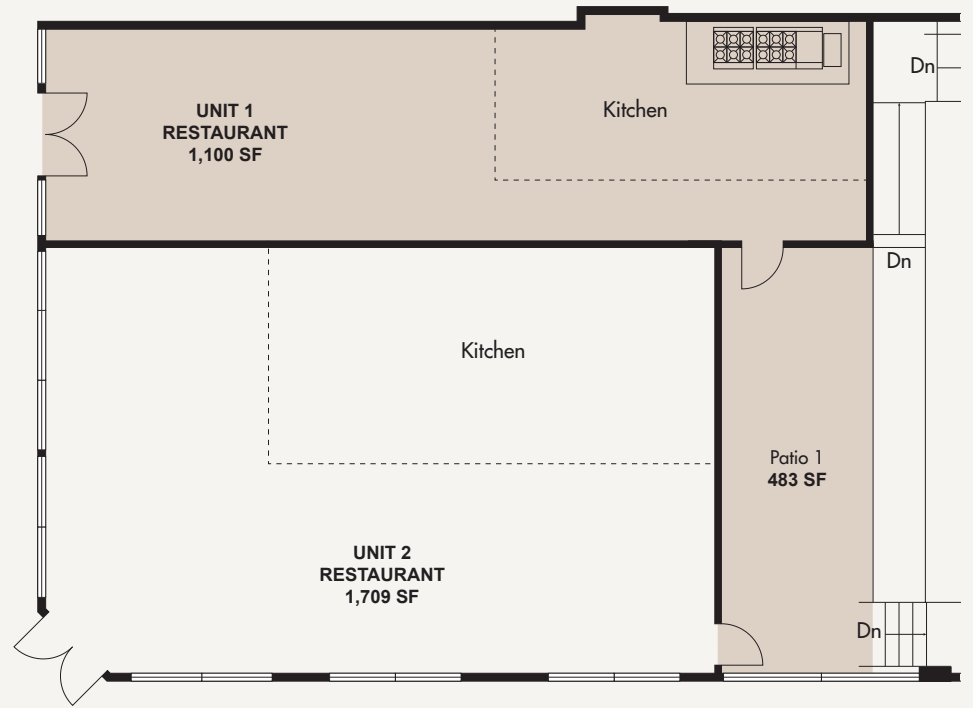
Unit 1 – 1,239 SF



Beer and wine approvals



2nd generation restaurant with type-1 hood



LOGAN STREET



LOGAN STREET

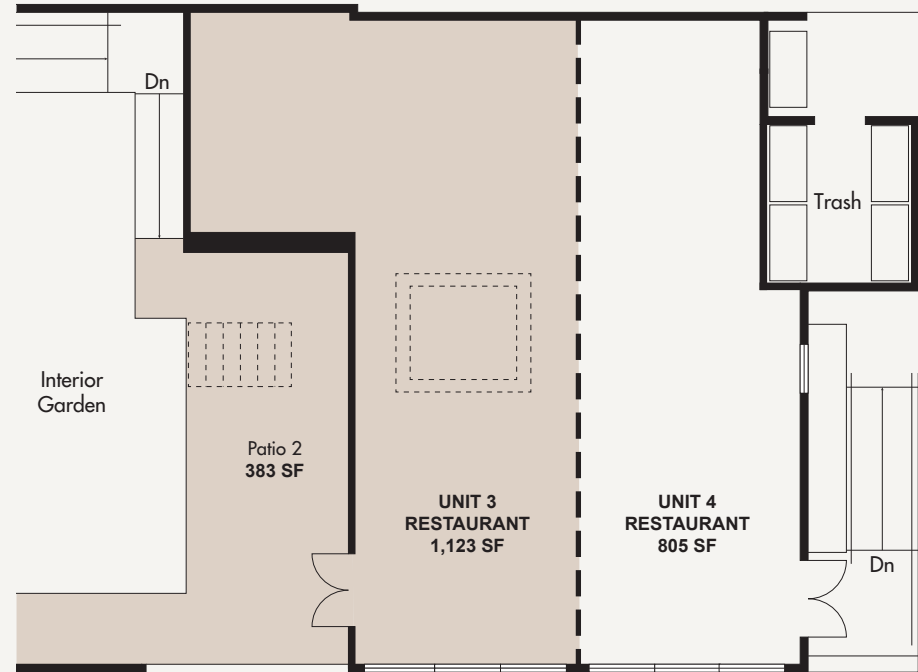
Unit 3 — 1,123 SF + 383 SF Patio
(Can be combined with Unit 4: 1928 SF + 383 SF Patio)



Potential for indoor/outdoor dining



Skylight in place





LOGAN STREET



Unit 3
1,123 SF + 383 SF Patio



LOGAN STREET

Unit 4 — 805 SF

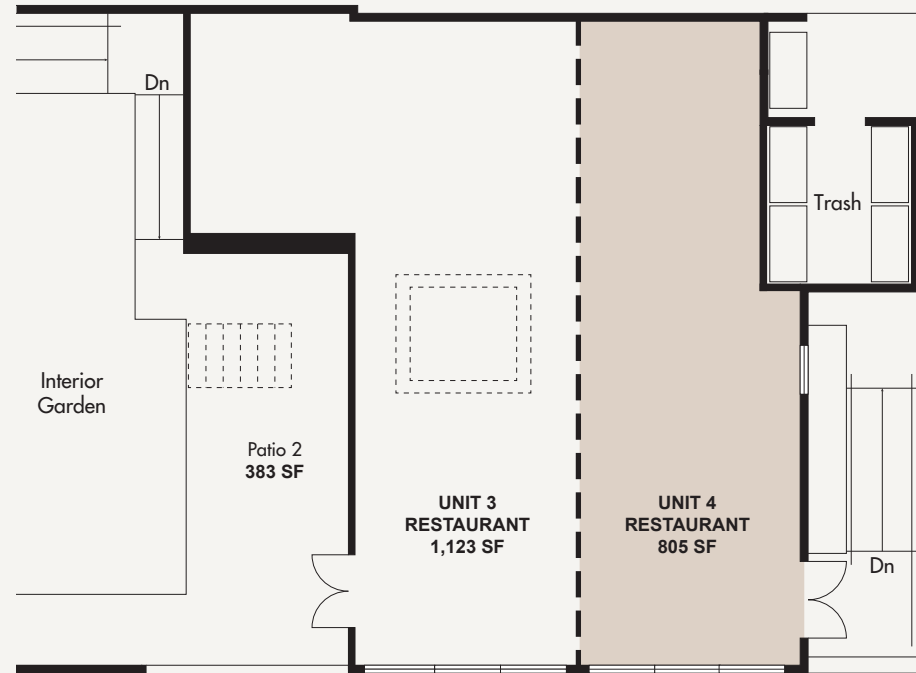
(Can be combined with Unit 3: 1928 SF + 383 SF Patio)



Efficient space with
vanilla shell delivery



New storefronts and
windows underway



AMENITY MAP



THE ECHO PARK COMMUNITY

1630 SUNSET BOULEVARD

- HOLLYWOOD
- SILVER LAKE
- LOS FELIZ
- N ALVARADO STREET
- GLENDALE BOULEVARD
- MEN & BEASTS
- MASA
- CLUB PILATES
- STICKY RICE
- LASSENS/WALGREENS
- COOKBOOK
- HONEY HI
- ECHO PARK AVENUE
- BACETTI
- CANYON COFFEE
- LOWBOY | DONNAS | BAR FLORES
- HEY HEY
- GOGOSHA OPTIQUE
- MONTY'S GOOD BURGER
- LAVETA TERRACE
- GYOZA BAR
- STEREOSCOPE COFFEE
- WOODCAT COFFEE BAR
- EL MORO CHURROS
- ATI
- SLURPIN RAMEN
- MONKISH BREWING
- QUARTER SHEETS
- LITTLE JOY
- UNCLE PAULIE'S
- THE SHORT STOP



AREA OVERVIEW

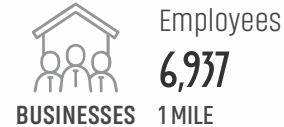
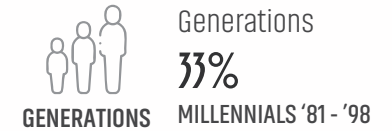
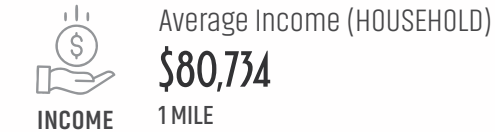
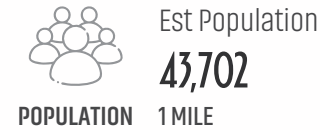
THE EASTSIDE'S FAVORITE

Echo Park is the jumping off point for many of the most interesting and dynamic neighborhoods in Los Angeles. With proximity to 4 major freeways: the I-5, the CA-2, the CA-110, and the US-101, Echo Park is bordered by Silver Lake, Los Feliz, Chinatown, Downtown, Hollywood, and convenient to Glendale, Koreatown and more.

Apart from marquee national destinations like Dodgers Stadium and regional draws like Echo Park Lake and Elysian Park, Sunset Blvd. continues to be a bustling draw for many of the city's top chefs and innovative retailers.

Echo Park is approaching a juncture with many large-scale developments under entitlement which will propel the neighborhood into a true live-work-play destination.

DEMOGRAPHICS (1 MILE RADIUS)



QUARTER
SHEETS
PIZZA CLUB



BAR FLORES &
LOW BOY

CANYON
COFFEE



HONEY-HI



DADA



1630 SUNSET BOULEVARD

RETAIL FOR LEASE



FOR MORE INFORMATION, PLEASE CONTACT:

ERIK KRASNEY

+1 323 270 1920

Lic. 01970585

erik.krasney@cbre.com

ZACHARY CARD

+1 310 497 5218

Lic. 01717802

zachary.card@cbre.com

SOPHIA KESSLER

+1 310 940 5545

Lic. 02168824

sophia.kessler@cbre.com

CBRE

© 2025 CBRE, Inc. All rights reserved. This information has been obtained from sources believed reliable but has not been verified for accuracy or completeness. You should conduct a careful, independent investigation of the property and verify all information. Any reliance on this information is solely at your own risk. CBRE and the CBRE logo are service marks of CBRE, Inc. All other marks displayed on this document are the property of their respective owners, and the use of such logos does not imply any affiliation with or endorsement of CBRE. Photos herein are the property of their respective owners. Use of these images without the express written consent of the owner is prohibited.