

FOR SUBLEASE

±3,622 SF INDUSTRIAL CONDO



50 TESLA, IRVINE SPECTRUM, CA 92618

Alton Burgess
Senior Vice President
949.263.5397
aburgess@voitco.com
Lic. #01717094

Ryan Schroeder
Associate
949.922.1854
rschroeder@voitco.com
Lic. #02249575

Voit
REAL ESTATE SERVICES

2020 Main Street, Suite 100
Irvine, CA 92614
949.851.5100 | 949.261.9092 Fax
Lic #01991785
www.VoitCo.com

50 TESLA, IRVINE SPECTRUM, CA



**GREAT
IRVINE
SPECTRUM
LOCATION**

**IMMEDIATE
ACCESS TO
5, 405 & 133
FREEWAYS**



- BUILDING SQ FT: ±3,622 SF
- OFFICE SIZE: ±2,000 SF
- ZONING: 5.4 General Industrial
- YEAR BUILT: 2004
- CONSTRUCTION TYPE: Masonry
- CEILING HEIGHT: 22'
- GROUND LEVEL DOORS: 1
- POWER: 200 Amp Panel
- SPRINKLERS: Yes
- PARKING: 3:1,000
- DIRECT DEAL POSSIBLE
- SUBLEASE EXPIRATION: 2.15.27

Alton Burgess
Senior Vice President
949.263.5397
aburgess@voitco.com
Lic. #01717094

Ryan Schroeder
Associate
949.922.1854
rschroeder@voitco.com
Lic. #02249575

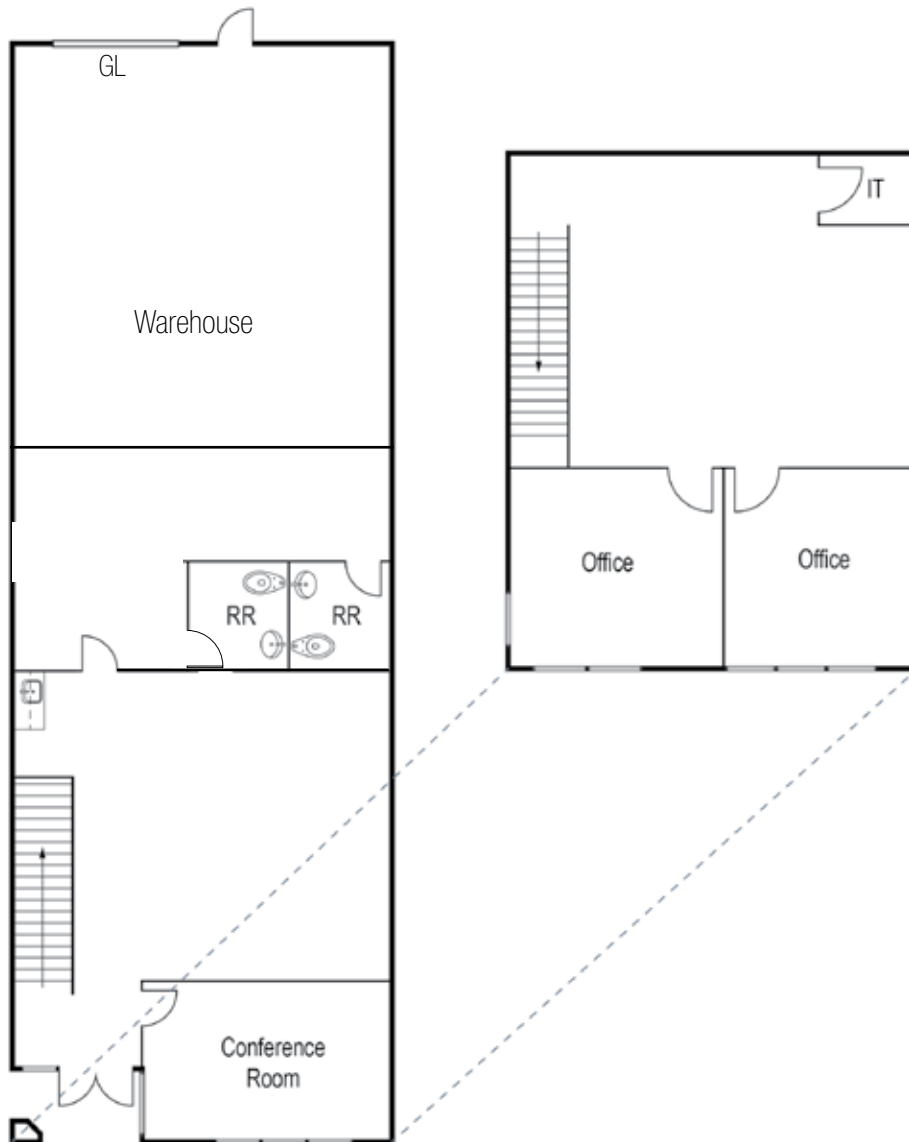
2020 Main Street, Suite 100, Irvine, CA 92614 • 949.851.5100 • 949.261.9092 Fax | www.VoitCo.com

Licensed as Real Estate Salespersons by the DRE. The information contained herein has been obtained from sources we deem reliable. While we have no reason to doubt its accuracy, we do not guarantee it. ©2026 Voit Real Estate Services, Inc. All Rights Reserved. Lic. #01991785

Voit
REAL ESTATE SERVICES

voitco.com

50 TESLA, IRVINE SPECTRUM, CA



Alton Burgess
Senior Vice President
949.263.5397
aburgess@voitco.com
Lic. #01717094

Ryan Schroeder
Associate
949.922.1854
rschroeder@voitco.com
Lic. #02249575

2020 Main Street, Suite 100, Irvine, CA 92614 • 949.851.5100 • 949.261.9092 Fax | www.VoitCo.com

Licensed as Real Estate Salespersons by the DRE. The information contained herein has been obtained from sources we deem reliable. While we have no reason to doubt its accuracy, we do not guarantee it. ©2026 Voit Real Estate Services, Inc. All Rights Reserved. Lic. #01991785

Voit
REAL ESTATE SERVICES

voitco.com

50 TESLA, IRVINE SPECTRUM, CA



Alton Burgess
Senior Vice President
949.263.5397
aburgess@voitco.com
Lic. #01717094

Ryan Schroeder
Associate
949.922.1854
rschroeder@voitco.com
Lic. #02249575

2020 Main Street, Suite 100, Irvine, CA 92614 • 949.851.5100 • 949.261.9092 Fax | www.VoitCo.com

Licensed as Real Estate Salespersons by the DRE. The information contained herein has been obtained from sources we deem reliable. While we have no reason to doubt its accuracy, we do not guarantee it. ©2026 Voit Real Estate Services, Inc. All Rights Reserved. Lic. #01991785

Voit
REAL ESTATE SERVICES

voitco.com