

360

HERNDON
PARKWAY

***FLEX OFFICE
SPACE - PRIME
LOCATION***



PROPERTY HIGHLIGHTS

- » Suite 700: 5,178 RSF Available
- » Suite 1600: 5,920 RSF Available
- » Suite 2200: 10,673 RSF Available
- » Office/Light Industrial (Town of Herndon)
- » Surrounded by an abundance of shopping, dining, and entertainment
- » Rental Rate : \$18.00 PSF / NNN
- » Immediate access to Dulles Toll Road, Fairfax Co. Parkway & Dulles Airport

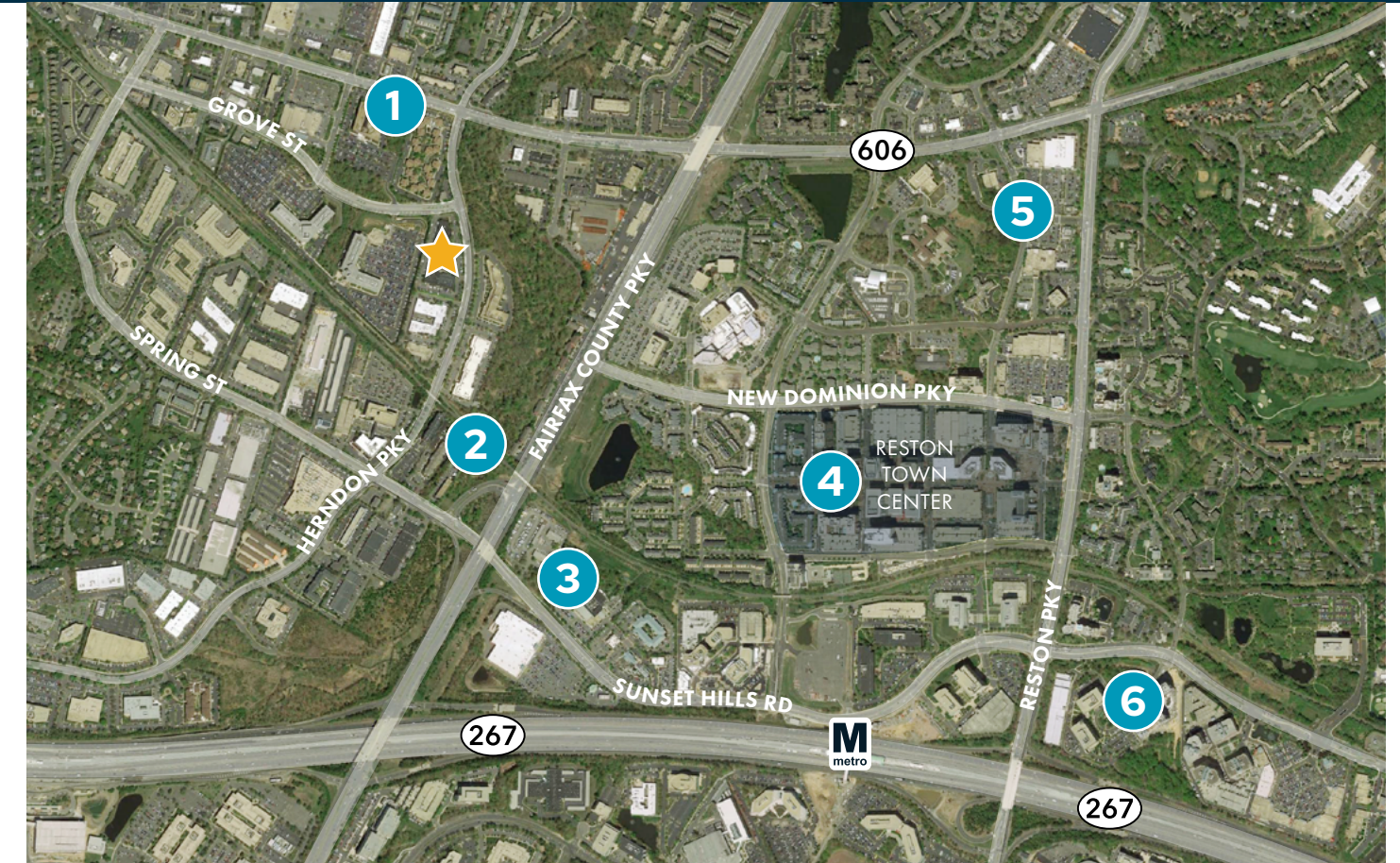
LOCATION MAP

Centrally located within major roadways



AMENITIES MAP

Local shopping, dining, and entertainment

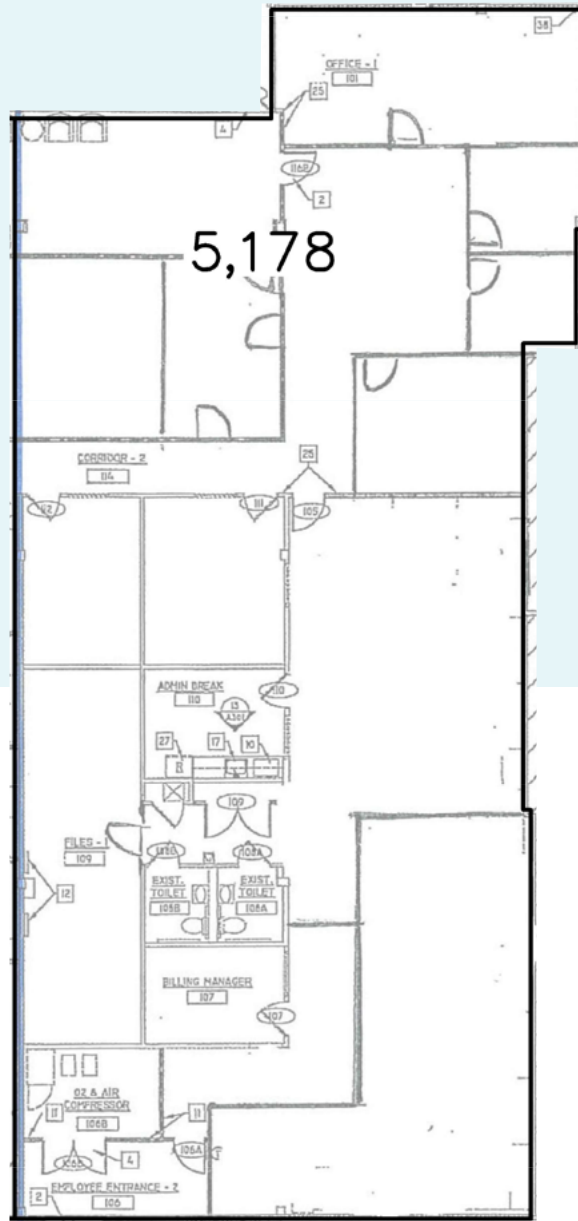


- | | | | |
|--|--|---|--|
| <p>1. Charcoal Kabob
MOM's Organic Market
Madina Market
Paradise Indian Cuisine
Duck Donuts
CarPool
Outback Steakhouse
Caintina D'Italia
Thai Luang
Comfort Inn
Safeway
Panera Bread
Popeyes</p> <p>2. Mr. Peperoni Pizza
Dunkin'
Alsin Beer Company
Hampton Inn Suites
Marriott Herndon Reston
Crossfit Reston
MVP Baseball
Chopsticks
Enatye Ethiopian
Hyatt House</p> | <p>3. Target
CVS
Chick-fil-A
Sunoco Gas
YMCA
Carrabba's Italian Grill
Extended Stay America
Cooper's Hawk Winery
Chipotle</p> <p>4. Bartaco
La Madeleine Bakery
Hyatt Regency
Jackson's
Sweetgreen
Passionfish
Ben & Jerry's
Chipotle
Subway
PokeHub
Midtown Kabob
Crafthouse
CVS Pharmacy
Barcelona
Mason's Lobster House</p> | <p>&pizza
Mon Ami Gabi
Jinya
Morton's Steakhouse
Starbucks
Ted's Bulletin
Potbelly
North Italia
Maker's Union
Uncle Julio's Mexican
Le Pain Quotidien
Cava</p> <p>5. Trader Joe's
Silver Diner
Wendy's
Santini's Deli
Willard's BBQ
Pollo Peru
Home Depot
Pizza Boli's
Bento House
Harris Teeter</p> | <p>6. Melting Pot
Tropical Smoothie
Café
Starbucks
Whole Foods Market
Five Guys
CVS
MOD Pizza
Popeyes
Sheraton
The Westin</p> |
|--|--|---|--|

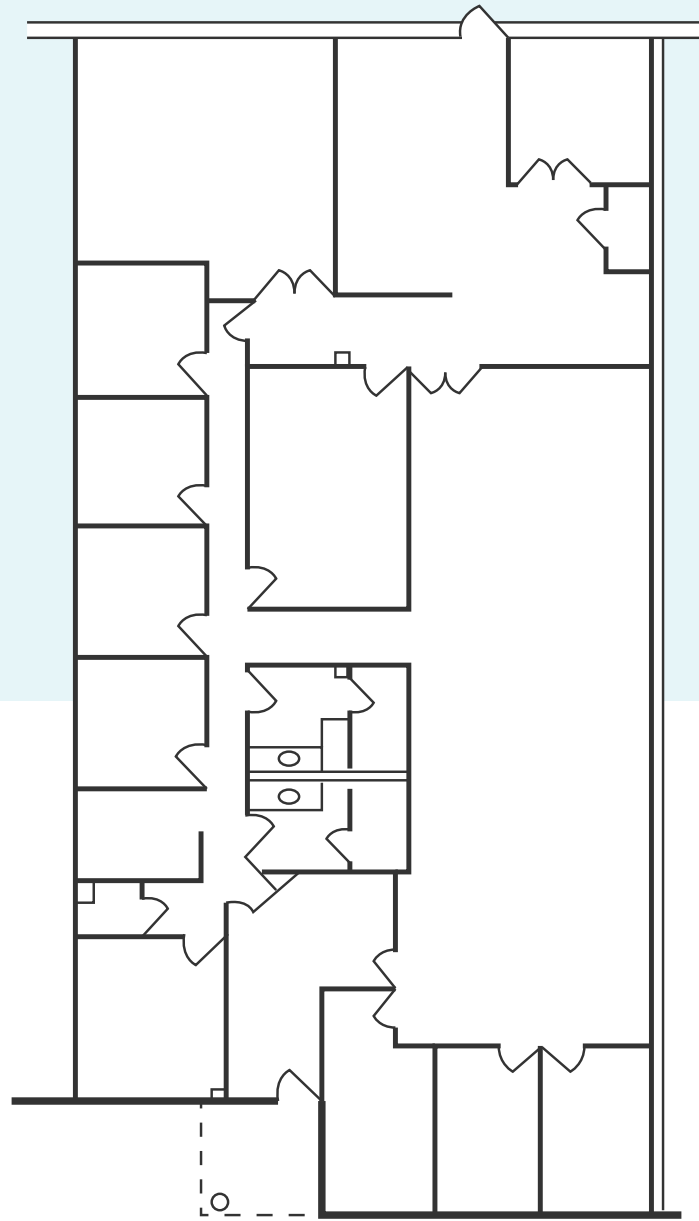
SPACE AVAILABILITY

\$18.00 NNN

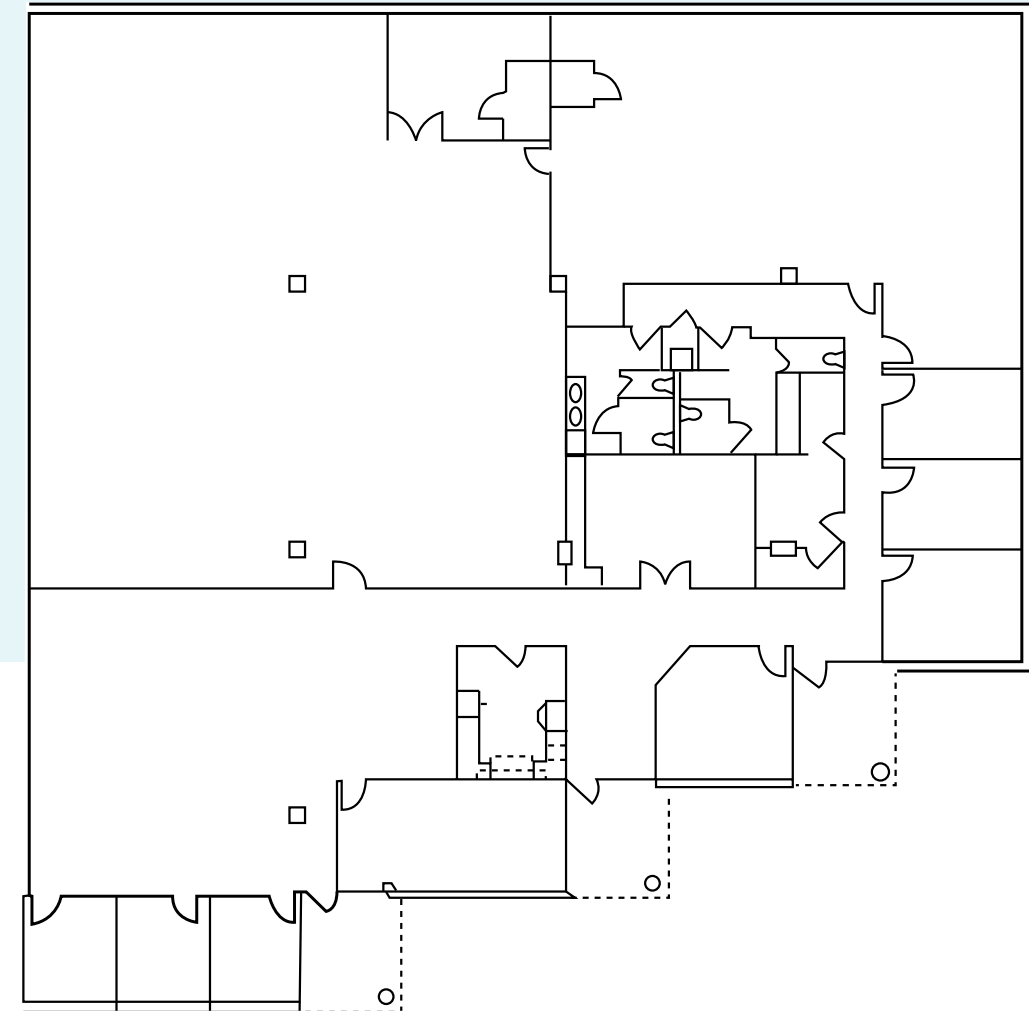
Suite 700: 5,178 RSF



Suite 1600: 5,920 RSF



Suite 2200: 10,673 RSF





360
HERNDON PKWY

360 HERNDON PARKWAY

FLEX OFFICE SPACE
PRIME LOCATION

 **TRANSWESTERN**

8444 Westpark Drive, Suite 850
McLean, Virginia 22102
703.821.0040

transwestern.com

For More Information
Please Contact:

BEV SHEFFLER

703. 749. 9453

bev.sheffler@transwestern.com