

627

TREMONT

TURNKEY CAFÉ / RESTAURANT SPACE IN BOSTON'S SOUTH END

1,800 SF STREET LEVEL + 237 SF BASEMENT AVAILABLE FOR LEASE



SECOND GENERATION CAFÉ BUILDOUT
SAVE ON INFRASTRUCTURE COSTS



Boston Realty Advisors

Unrivaled South End Presence

627 Tremont Street sits at the heart of Boston's South End, one of the city's most vibrant dining and shopping destinations. Surrounded by historic brownstones, boutique retailers, and acclaimed restaurants, the space benefits from consistent daily foot traffic and high neighborhood visibility.



95,785

POPULATION



Age 33

MEDIAN AGE



\$123,418

AVERAGE HOUSEHOLD INCOME



43,833

HOUSEHOLDS

Features & Accessibility

SPACE HIGHLIGHTS

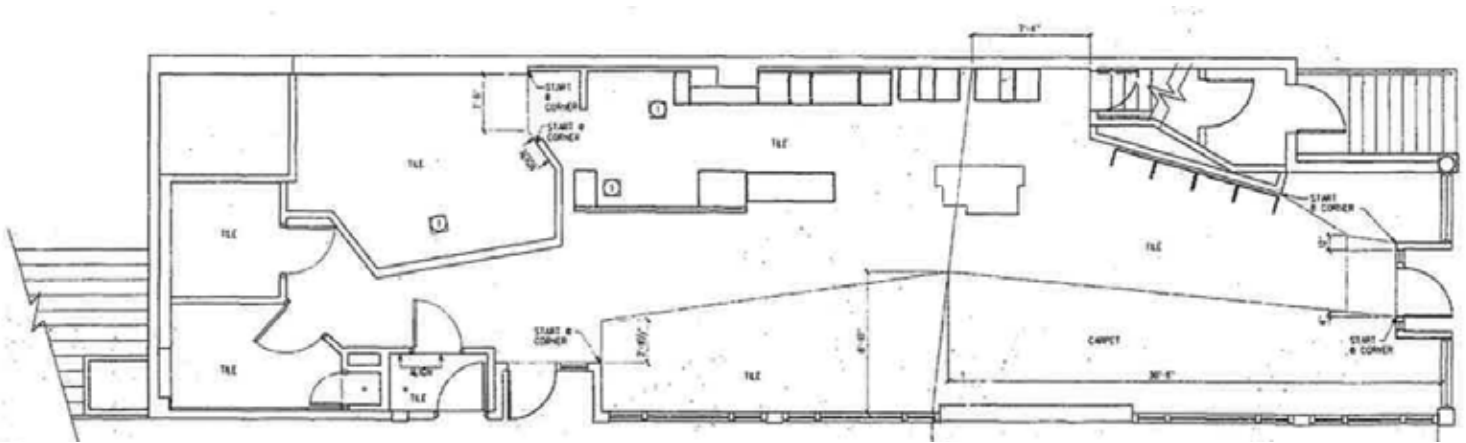
- 1,800 SF street-level space + 237 SF basement
- Large corner visibility with classic South End architecture
- Existing café/restaurant buildout (plumbing, venting, kitchen potential)
- Heavy pedestrian activity day and night
- Surrounded by cafés, fitness studios, shops, and residences

Transit & Accessibility

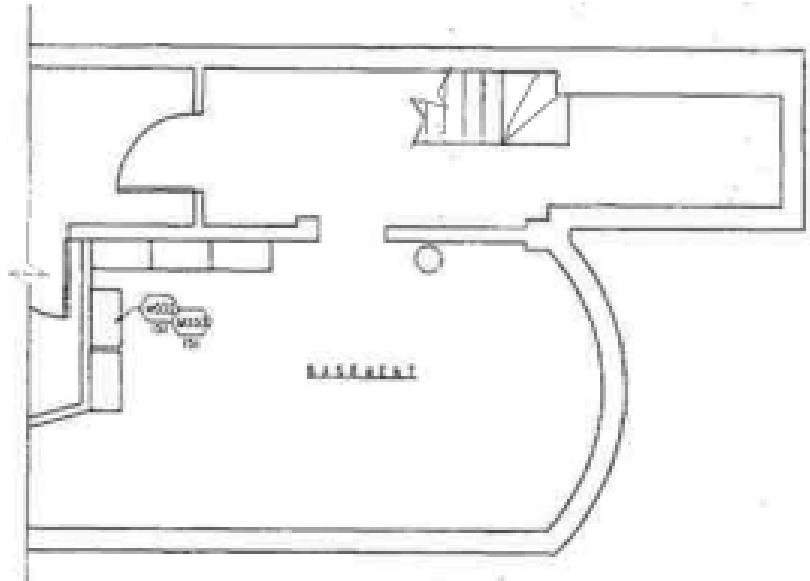
Steps to Orange and Green Lines, multiple bus routes, and within 1 mile of Back Bay, Downtown, and the Financial District.



STREET LEVEL | 1,800 SF



BASEMENT | 237 SF



WHITNEY E. GALLIVAN
617.850.9612
wgallivan@bradvisors.com

JOE WAGNER
617.850.9675
jwagner@bradvisors.com

GUS HOFFMANN
617.448.5055
ahoffmann@bradvisors.com

LUKE SWEENEY
401.601.1145
lsweeney@bradvisors.com



136 Newbury Street | Boston, MA | 617.375.7900 | BRAdvisors.com

© Copyright Boston Realty Advisors. All rights reserved. The information contained here has been obtained through sources deemed reliable but cannot be guaranteed as to its accuracy. Any information of special interest should be obtained through independent verification.