

FOR LEASE



Move Your Business To Tampa's Premier Westshore Address

Highly Functional Office Space in the Heart of Westshore

Suite	Floor	SF	Available	Lease Rate
100	1st	3,054 RSF	11/01/2026	\$28.00 FS
203	2nd	1,876 RSF	Immediately	\$28.00 FS

Key Highlights

- Parking Ratio: 4/1,000
- Close to Tampa International Airport, International & Westshore Mall
- Proximity to I-275, Veterans Expressway & Howard Frankland Bridge
- Walking distance to Starbucks, Olive Garden, Pei Wei, Ruth's Chris & Longhorn Steakhouse, Multiple Hotels & Retail Stores
- Ideal for attorneys, CPA firms, consulting groups, insurance agencies, healthcare admin, creative firms, or regional sales offices seeking a professional image with excellent accessibility

For more information or to request a tour, please contact:

Doug O'Donnel
Managing Director
C: (772) 530-9959
DOdonnell@OCAteam.com



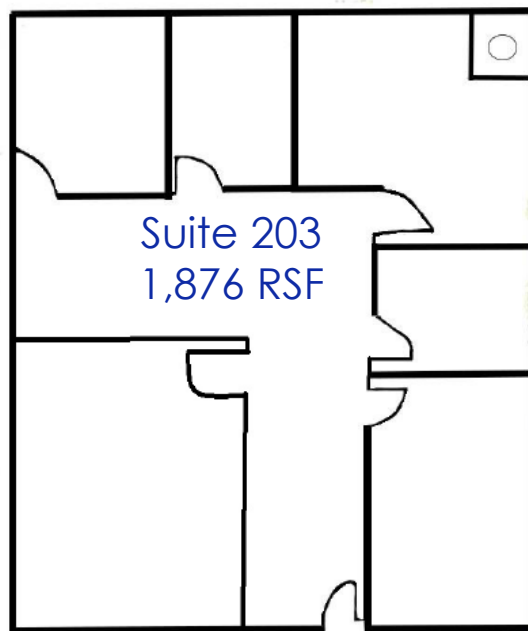
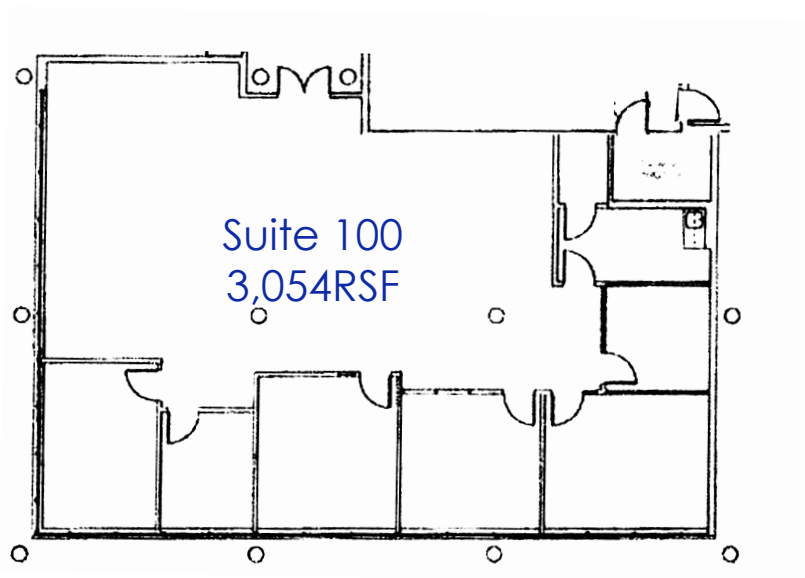
**ONEIL
COMMERCIAL
ADVISORS**

STRATEGIC REAL ESTATE SOLUTIONS

4905 W Laurel Street
Tampa, FL 33606



- Large updated kitchen and break room
- Ample natural light with windows in each office and around the perimeter of the space



All information contained herein has been obtained from the owners and/or other sources deemed reliable, but we make no representations or warranties, expressed or implied, as to its accuracy. Information is submitted with the possibility of errors, omissions, change of price, rate, conditions or withdrawal without notice. References to measurements are approximate. All parties to a real estate transaction should seek legal and tax advice prior to commitment. Buyer/Tenant must verify the information and bears all risk for any inaccuracies.

Location



Located in the heart of Westshore, 4905 W Laurel offers excellent accessibility to major thoroughfares, and a wide array of dining, shopping, and lodging options. The Building is located 2.2 miles from Tampa International Airport. Top attractions include International Mall and Raymond James Stadium. Quick and convenient access to I-275, I-4 and other major corridors.

Demographic Summary

