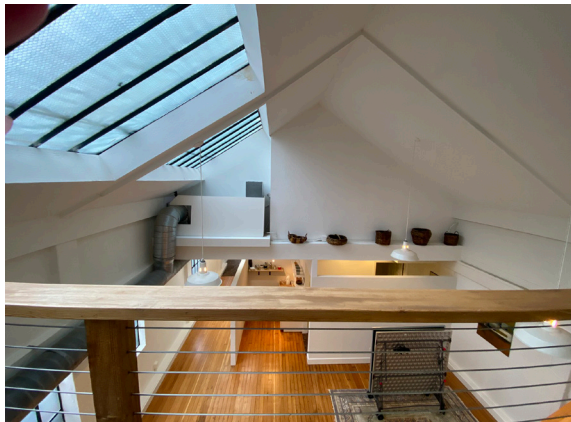




# Downtown Creative Office for Lease

**263 HATCH LANE  
BURLINGAME, CA**



## **Property Highlights**

±2,145 square feet available

Additional ±305 sf space can be contiguous

2 conference rooms, 2nd floor open balcony and private outdoor deck

Kitchenette and private bathroom

Heart of Downtown Burlingame - 1 block walk to Burlingame Avenue restaurants, amenities, and Caltrain Station

Rental Rate: \$4.35/SF Gross

Tenant pays PG&E and garbage

*For information, please contact:*

**Deborah O'Reilly**

*Director*

t 650-358-5256

deborah.oreilly@nmrk.com

CA RE License #01895522

[nmrk.com](http://nmrk.com)

**NEWMARK**

The information contained herein has been obtained from sources deemed reliable but has not been verified and no guarantee, warranty or representation, either express or implied, is made with respect to such information. Terms of sale or lease and availability are subject to change or withdrawal without notice. 20-0730 • 12/20

---

263 HATCH LANE BURLINGAME, CA

---



---

*For information, please contact:*

**Deborah O'Reilly**

*Director*

t 650-358-5256

deborah.oreilly@nmrk.com

CA RE License #01895522

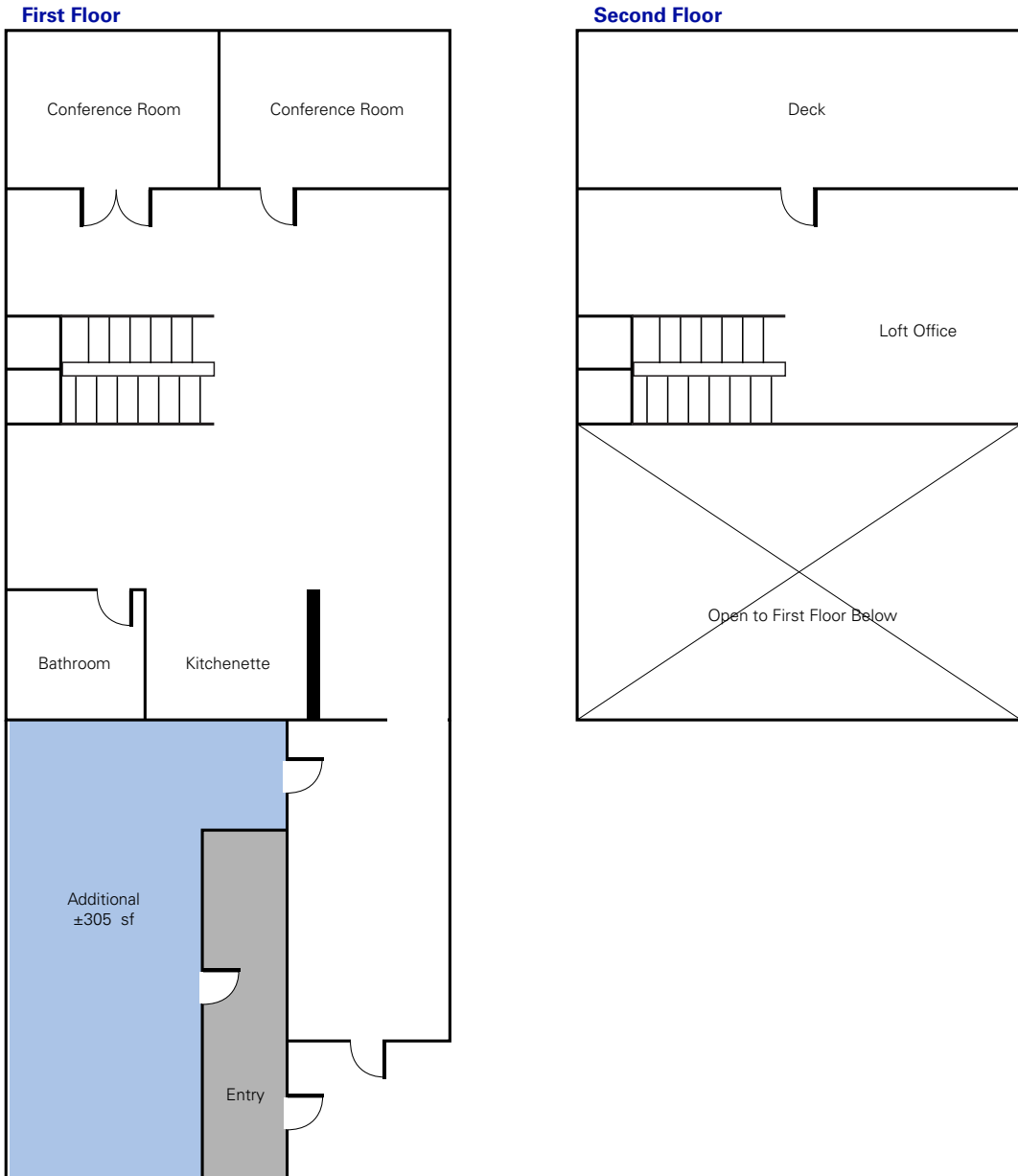
[nmrk.com](http://nmrk.com)

**NEWMARK**

---

**263 HATCH LANE BURLINGAME, CA**

---



---

*For information, please contact:*

**Deborah O'Reilly**

*Director*

t 650-358-5256

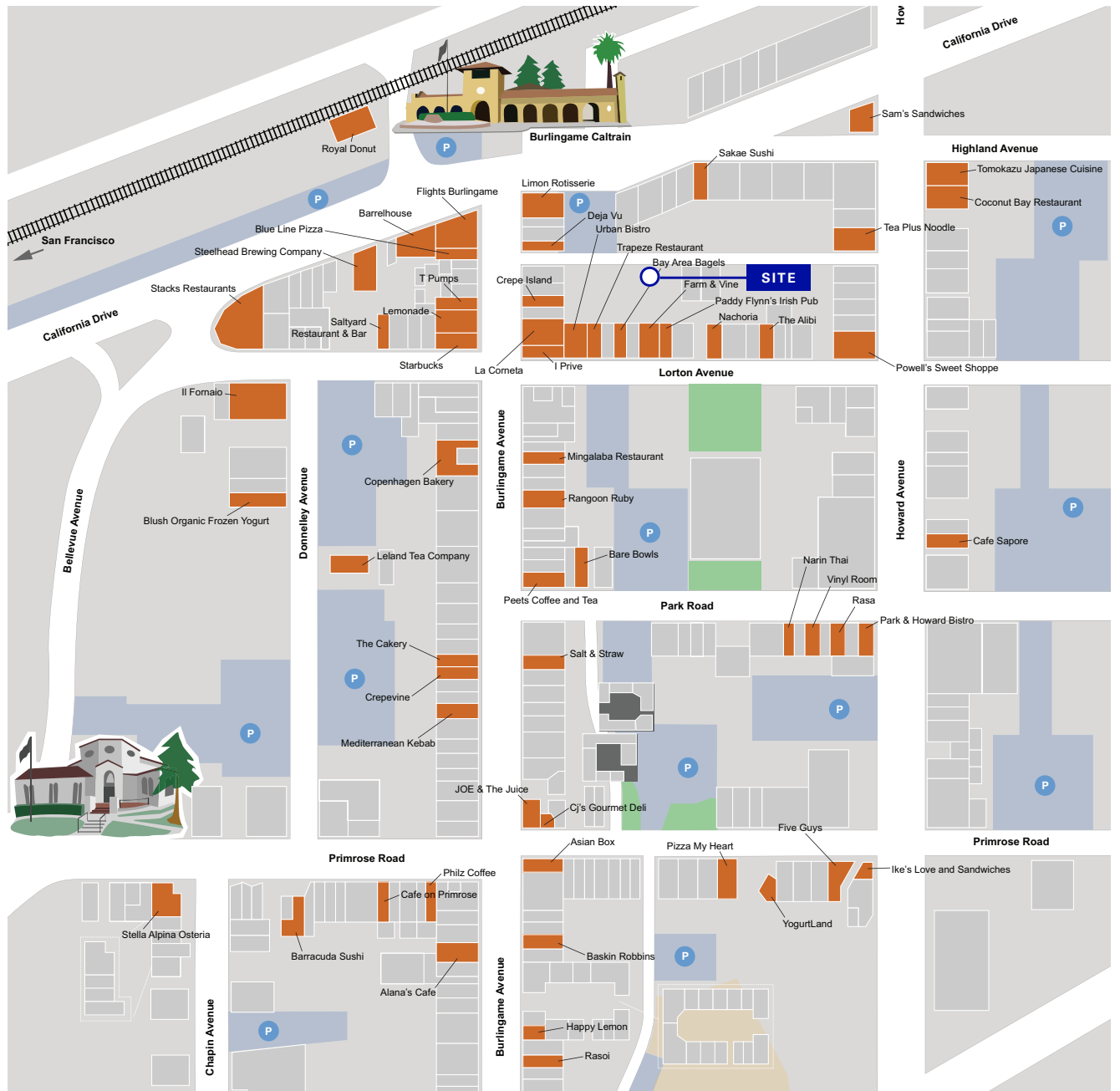
deborah.oreilly@nrmk.com

CA RE License #01895522

[nrmk.com](http://nrmk.com)

**NEWMARK**

# 263 HATCH LANE BURLINGAME, CA



For information, please contact:

**Deborah O'Reilly**

Director

t 650-358-5256

deborah.oreilly@nrmk.com

CA RE License #01895522

[nrmk.com](http://nrmk.com)

**NEWMARK**