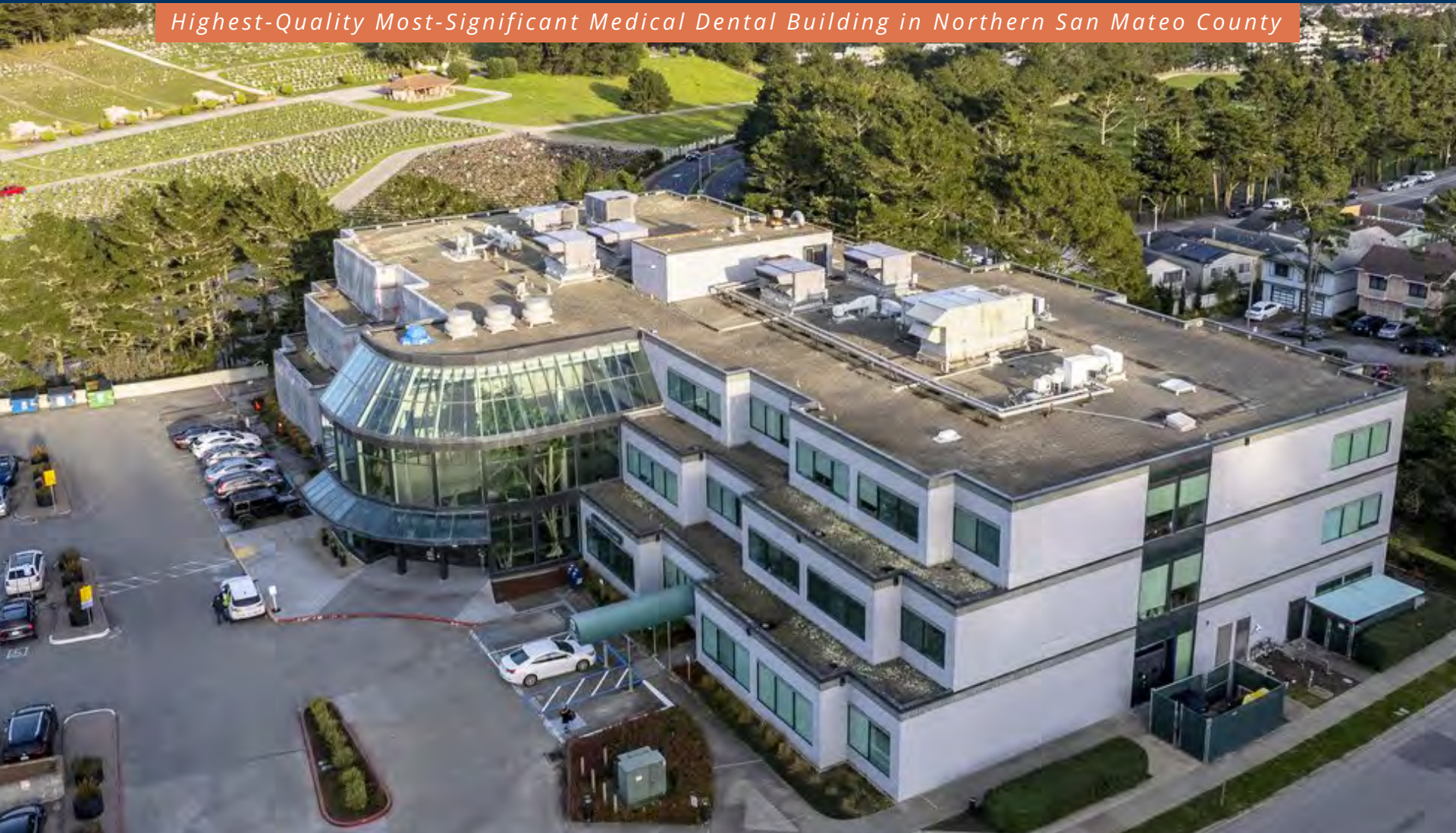


BAYSIDE REALTY PARTNERS PRESENTS

# Physicians Medical Center

901 Campus Drive, Daly City

*Highest-Quality Most-Significant Medical Dental Building in Northern San Mateo County*



TRASK LEONARD  
President and CEO  
650.533.2591  
[tleonard@baysiderp.com](mailto:tleonard@baysiderp.com)  
DRE#01152101



GRACE LINDBERG  
Vice President  
415.307.0252  
[glindberg@baysiderp.com](mailto:glindberg@baysiderp.com)  
DRE#02230832



# Physicians Medical Center

## 901 Campus Drive, Daly City

### LOCATION

- Excellent accessibility to Hwy 280 (at Hickey Blvd), SR 35 and SR 1 and Colma BART Station
- 1 mile from Seton Medical Center, area's primary hospital
- Convenient location with parking for San Francisco residents—5 minute drive to border of San Francisco
- Large parking field, including covered parking, with a ratio of approximately 4.45 spaces per 1,000 sf



### BUILDING

- Significant primary care presence by *Palo Alto Medical Foundation (PAMF)*
- Longstanding active surgery center, *Campus Surgery Center*, on ground floor
- On-site pharmacy
- Monument signage opportunity
- Attractive atrium lobby
- On-site building engineer
- Upgraded common areas

BAYSIDE REALTY PARTNERS PRESENTS

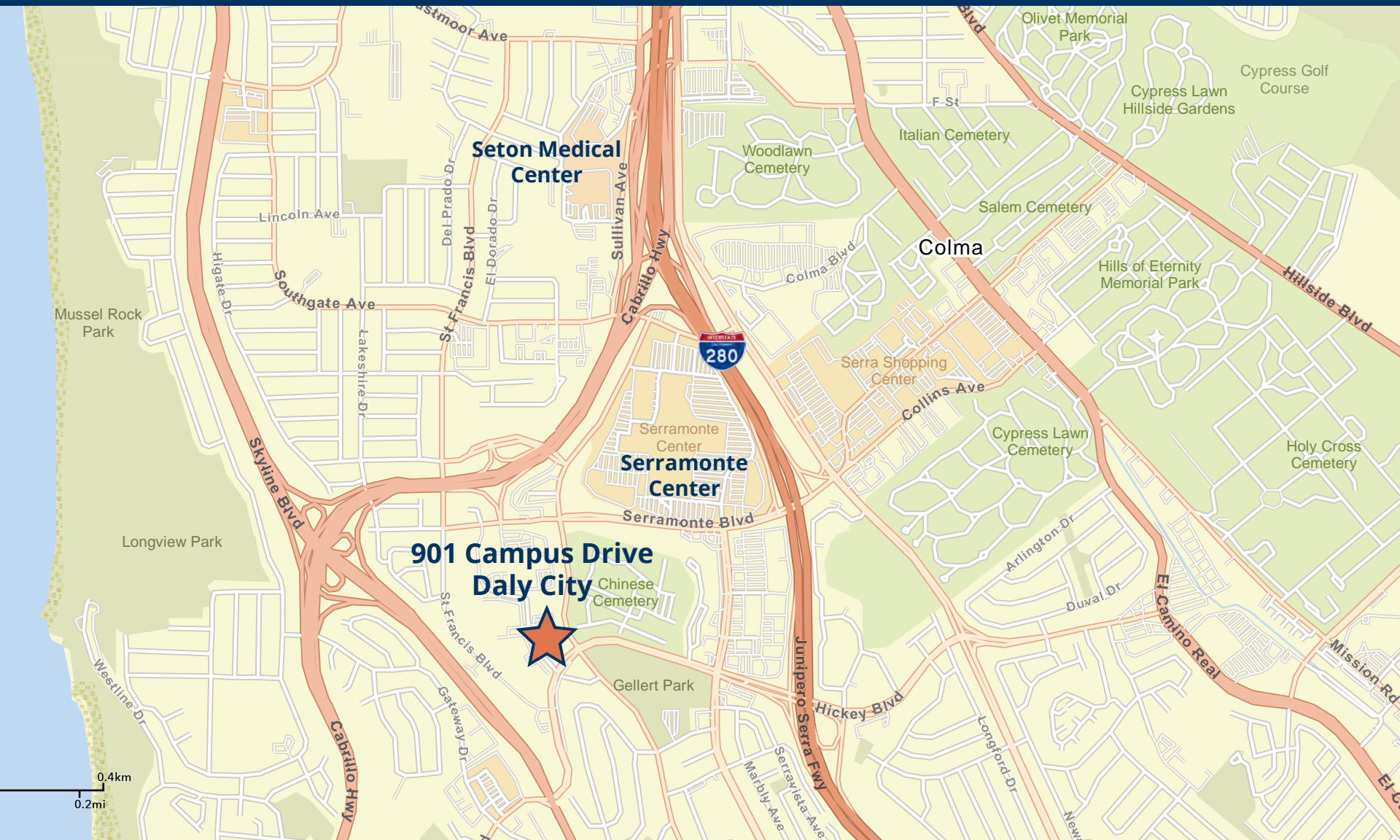
# Physicians Medical Center

901 Campus Drive, Daly City



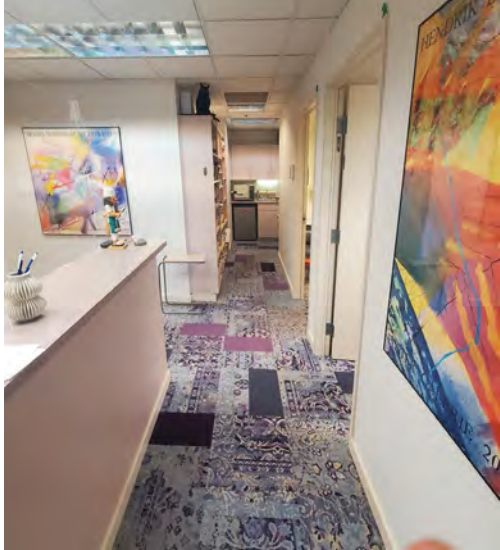
# Physicians Medical Center

## 901 Campus Drive, Daly City



# Physicians Medical Center

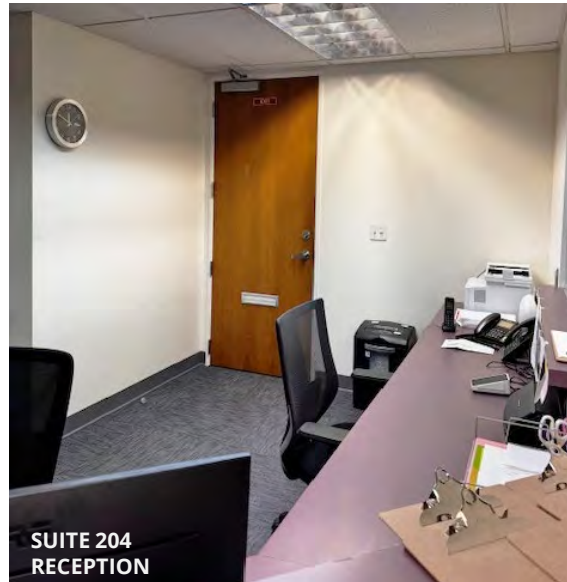
901 Campus Drive, Daly City



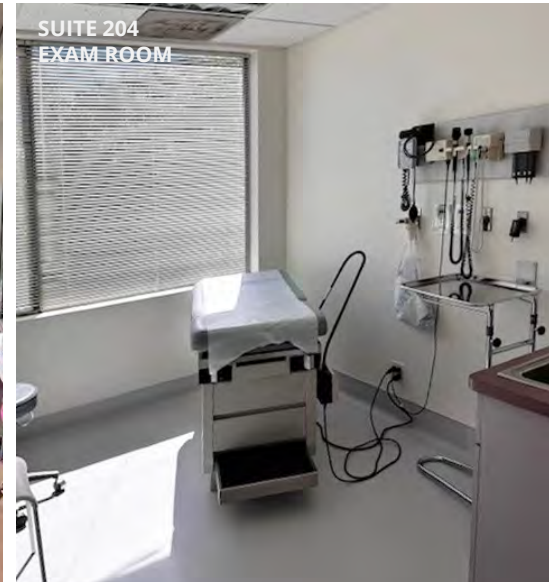
SUITE 204  
EXAM ROOM



SUITE 204  
WAITING ROOM



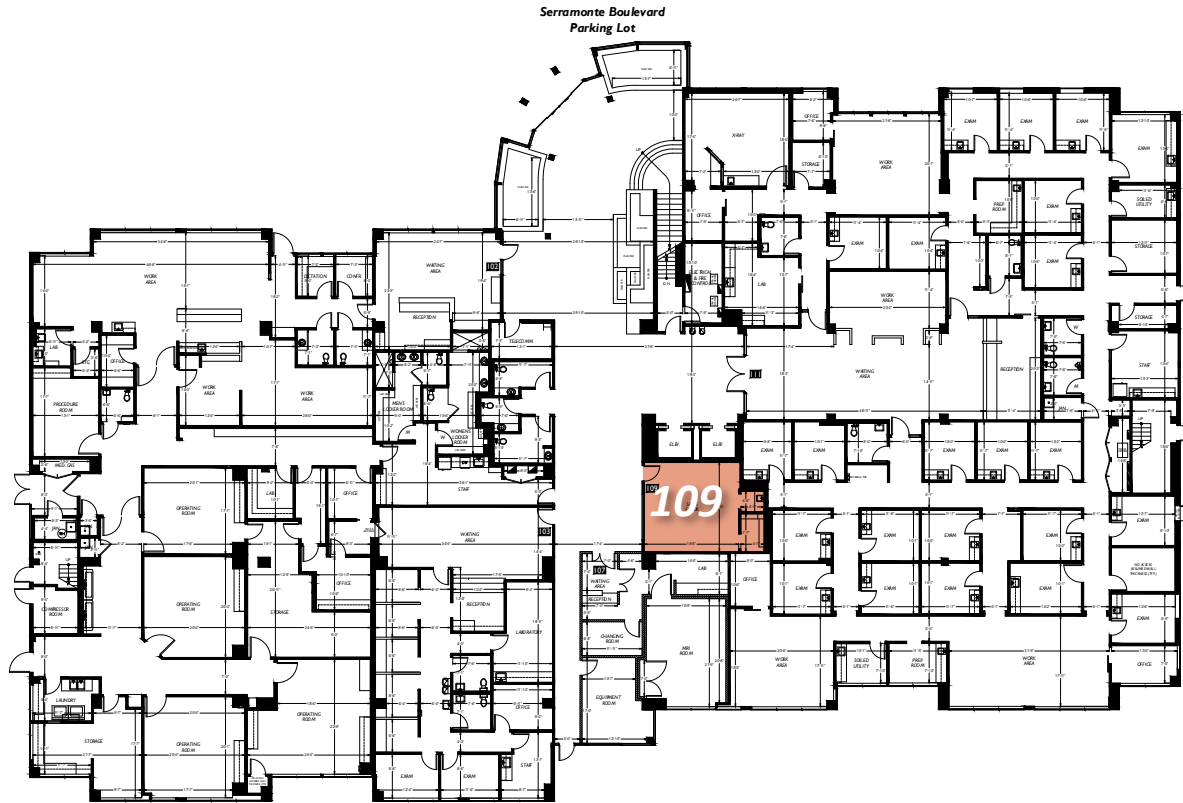
SUITE 204  
RECEPTION



SUITE 204  
EXAM ROOM

# Physicians Medical Center

901 Campus Drive, Daly City



## FIRST FLOOR

Suite 109

454 RSF

Prominent and visible ground floor location. Space with storage. Suitable for retail, medical or dental

# Physicians Medical Center

901 Campus Drive, Daly City

Serramonte Boulevard  
Parking Lot



## SECOND FLOOR

**Suite 204**      1,696 RSF  
2 exam rooms, 2 offices, reception/waiting area, staff, work area, restroom

**Suite 207**      928 RSF  
Waiting area, reception area, office, 2-3 exam rooms  
*Available September 1, 2026*

**Suite 210**      1,764 RSF  
5 exam rooms, 3 offices, reception/waiting storage, 2 entrances  
*Available December 1, 2026*

# Meet Your Expert Team



TRASK LEONARD

President and CEO

650.533.2591

[tleonard@baysiderp.com](mailto:tleonard@baysiderp.com)

DRE#01152101



GRACE LINDBERG

Vice President

415.307.0252

[glindberg@baysiderp.com](mailto:glindberg@baysiderp.com)

DRE#02230832

# BAYSIDE REALTY PARTNERS

*The preeminent provider of management, leasing, construction management and accounting services for healthcare properties.*



## MARKET LEADER

- Leasing & Property Management
- Investment Sales
- Tenant Representation
- Construction Management
- Property Repositioning



## INFLUENTIAL NETWORK

- Institutional Investors
- Healthcare Systems and Healthcare Districts
- Physicians & Districts
- Private Investors



## DOMINANT FOOTPRINT

- 2 million SF leased & managed
  - 50+ MOB portfolio
  - 10,000-240,000 SF
  - 500,000 SF portfolio
- San Francisco's largest MOBs
- 950+ leases executed
- 500+ medical and dental tenants

**DOMINANT. EXPERT. INFLUENTIAL.**