

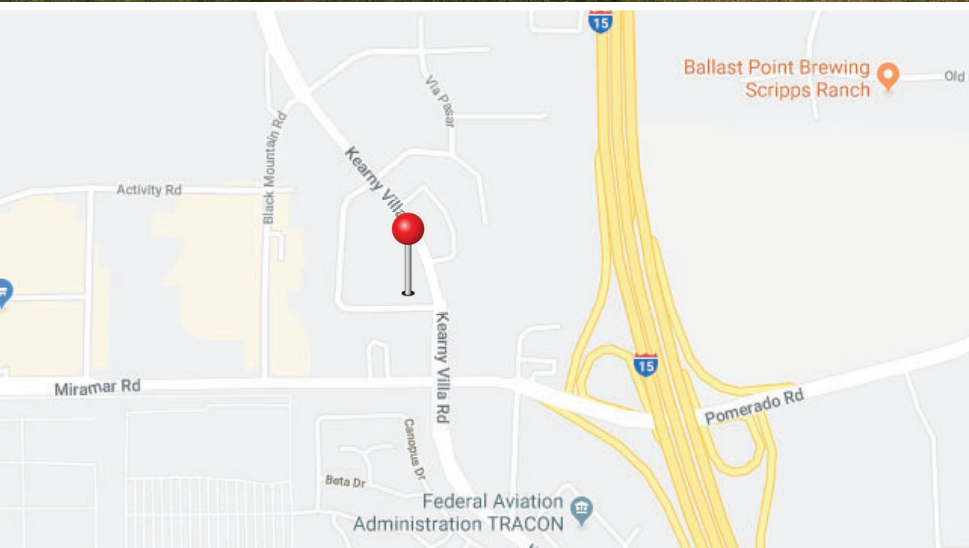
9474 KVR



FOR LEASE
Office Space

9474 Kearny Villa Road | San Diego, CA 92126

Property Description



Address	9474 Kearny Villa Road San Diego, CA 92126
Building Type	Office Building
Year Built	1987
Land Area	1.07 AC
Building Size	17,124 SF
Parking	3.62/1000 SF
APN	341-230-80
Signage	Building Signage & Monument Signage
Stories	2
Freeway Access	2 Blocks from I-15
Electric	Separate Electric Meters
Location	The building is centrally located off of Interstate 15 and Kearny Villa Road in the Mira Mesa/Miramar Submarket

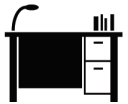
Office Space FOR LEASE

Suite 215

SUITE 215 | 1,653 SF



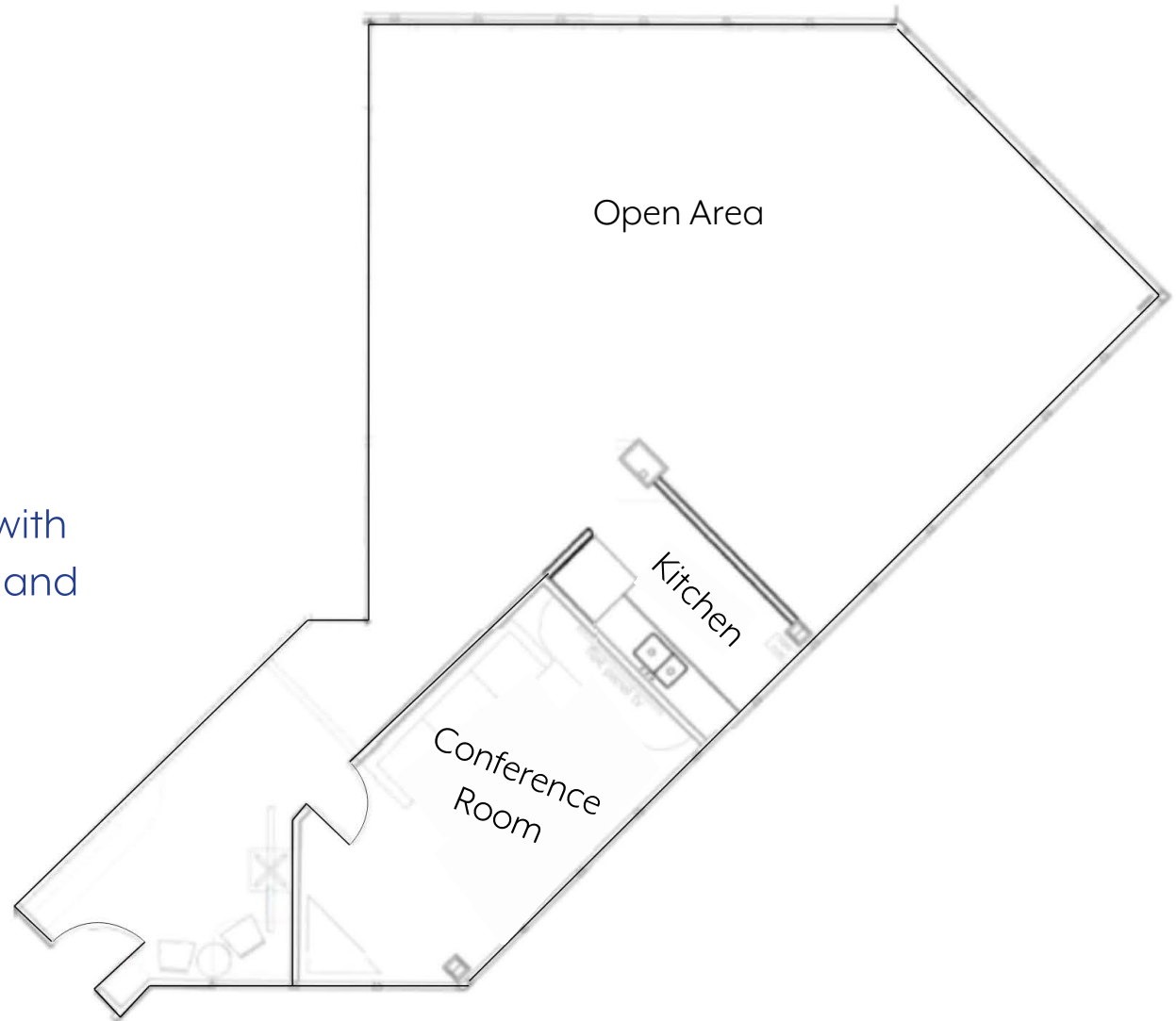
Call Broker for Pricing



Window Lined Corner Unit with
Conference Room, Kitchen, and
Large Open Area



Available March 1, 2025



9474 KVR



FOR MORE INFORMATION
PLEASE CONTACT

Sarah Anane

Associate

619.241.2342

sanane@naisandiego.com

NAI San Diego

9820 Willow Creek Road, Suite 100
San Diego, CA 92131
619.497.2255

NO WARRANTY OR REPRESENTATION, EXPRESS OR IMPLIED, IS MADE AS TO THE ACCURACY OF THE INFORMATION CONTAINED HEREIN, AND THE SAME IS SUBMITTED SUBJECT TO ERRORS, OMISSIONS, CHANGE OF PRICE, RENTAL OR OTHER CONDITIONS, PRIOR SALE, LEASE OR FINANCING, OR WITHDRAWAL WITHOUT NOTICE, AND OF ANY SPECIAL LISTING CONDITIONS IMPOSED BY OUR PRINCIPALS NO WARRANTIES OR REPRESENTATIONS ARE MADE AS TO THE CONDITION OF THE PROPERTY OR ANY HAZARDS CONTAINED THEREIN ARE ANY TO BE IMPLIED.