

# Sunset

Silver Lake



Los Angeles

S — R

**CBRE**

Developed by

**RYDA**

**Zachary Card**

310-497-5218  
zachary.card@cbre.com  
Lic. 01717802

**Erik Krasney**

323-270-1920  
erik.krasney@cbre.com  
Lic. 01970585

**Ryan Gurman**

310-650-7545  
ryan.gurman@cbre.com  
Lic. 01972081

# Row

**3210 – 3300 Sunset Blvd**

19,000 sq. ft. of Retail and Restaurant

Now Leasing

Sunset Row honors the past while creating new spaces for the future.

# A canvas for creativity and community.

S — R



Across the street from 3225 W Sunset  
12,656 SF retail campus ft. Open

Introducing our first edition of retail spaces that will welcome the next wave of Silver Lake's renaissance. A creative collection of retail, restaurant and service spaces that will be a cultural hub of the community.

announcing  
**Open**  
Yoga breathwork meditation  
est. Venice, CA



AKILA



FREE PEOPLE



GOLDEN AGE

LOQUAT

BAGGU

(MALIN+ GOETZ)

DS&D URG

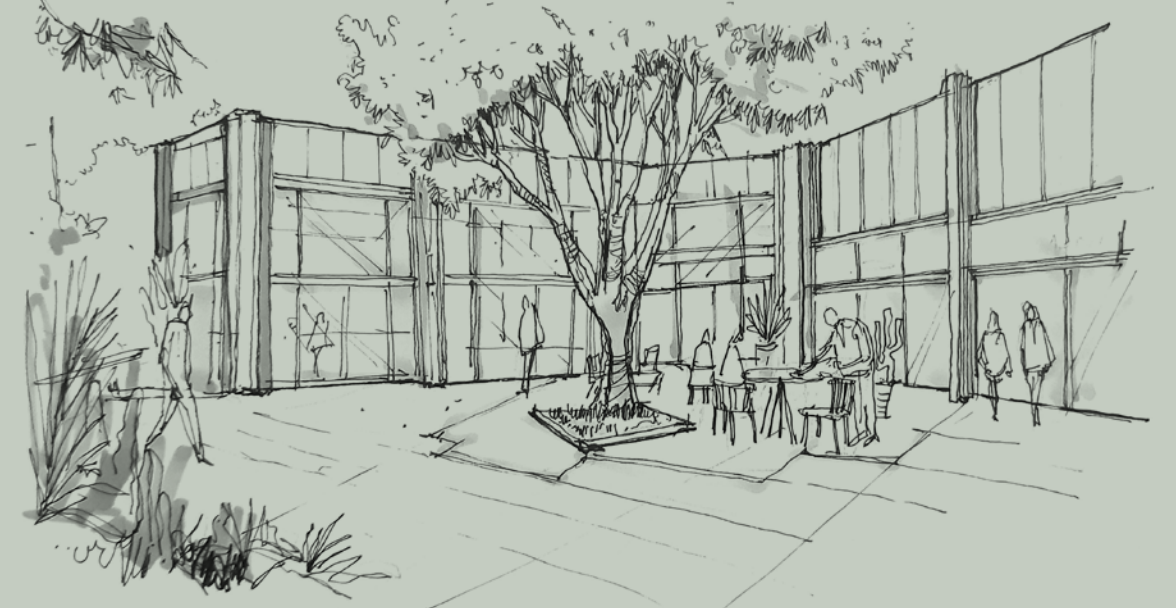
BAR di bello

SUNSPEL  
ENGLAND 1860

FILSON  
SINCE 1897

# 3300 Sunset

A fresh renovation of a 1930s auto body shop, 3300 Sunset features expansive bow truss ceilings and expertly restored original details. Its hallmark art deco design is enhanced with thoughtful architectural updates that create a sense of modern heritage. The beautiful structure of the building shines through their enhancements.



**AKILA**



**LOQUAT**

**BAGGU**

**(MALIN+GOETZ)**

**DS&D  
URGA**

**BARdi bello**

**SUNSPERL**  
ENGLAND 1860

# 3300 Sunset

No.  
**108**

Retail  
806 sq. ft.

Available Jun 2026



S — R



# 3210 Sunset

Sunset Row's high street cosmopolitan.

A boutique collection of ground floor retail spaces, wrapped in the historical aesthetics of a beautiful Parisian-inspired deco building, offer incredible street presence with the convenience of adjacent parking. The restored features maintain the vintage charm while increasing functionality.

**FILSON**  
SINCE 1897

**GOLDEN  
AGE**

*Blundstone*

FREE PEOPLE

