

# 122

## WEST 146<sup>TH</sup> STREET HARLEM, NYC

Between Malcolm X & Adam  
Clayton Powell Jr. Blvds

ART STORAGE FACILITY FOR LEASE



### APPROXIMATE SIZE

Third Floor: 19,368 SF  
Lower Level: 18,729 SF

### ASKING RENT

Upon Request

### POSSESSION

Immediate

### TERM

10 Years

### COMMENTS

- Ideal for art storage
- Comprehensive backup systems
- Advanced fire suppression
- Loading facilities
- High-end security in place

### NEIGHBORS

Dunkin' • Red Star • Harlem Children's Zone • Key  
Food • KFC • T-Mobile • Popeyes • Duane Reade

### TRANSPORTATION

A C B D 3

### JAMES FAMULARO

President  
646.658.7373  
jfamularo@meridiancapital.com

### JACOB MAYER

Associate  
212.468.5926  
jmayer@meridiancapital.com

### COLE KLEPPINGER

Associate  
212.468.5993  
ckleppinger@meridiancapital.com



All information supplied is from sources deemed reliable and is furnished subject to errors, omissions, modifications, removal of the listing from sale or lease, and to any listing conditions, including the rates and manner of payment of commissions for particular offerings imposed by Meridian Capital Group. This information may include estimates and projections prepared by Meridian Capital Group with respect to future events, and these future events may or may not actually occur. Such estimates and projections reflect various assumptions concerning anticipated results. While Meridian Capital Group believes these assumptions are reasonable, there can be no assurance that any of these estimates and projections will be correct. Therefore, actual results may vary materially from these estimates and projections. Any square footage dimensions set forth are approximate.

# 122 WEST 146<sup>TH</sup> STREET

HARLEM, NYC | Between Malcolm X and Clayton Powell Jr. Blvds

## ART STORAGE FACILITY FOR LEASE



INTERIOR

### JAMES FAMULARO

President  
646.658.7373  
jfamularo@meridiancapital.com

### JACOB MAYER

Associate  
212.468.5926  
jmayer@meridiancapital.com

### COLE KLEPPINGER

Associate  
212.468.5993  
ckleppinger@meridiancapital.com

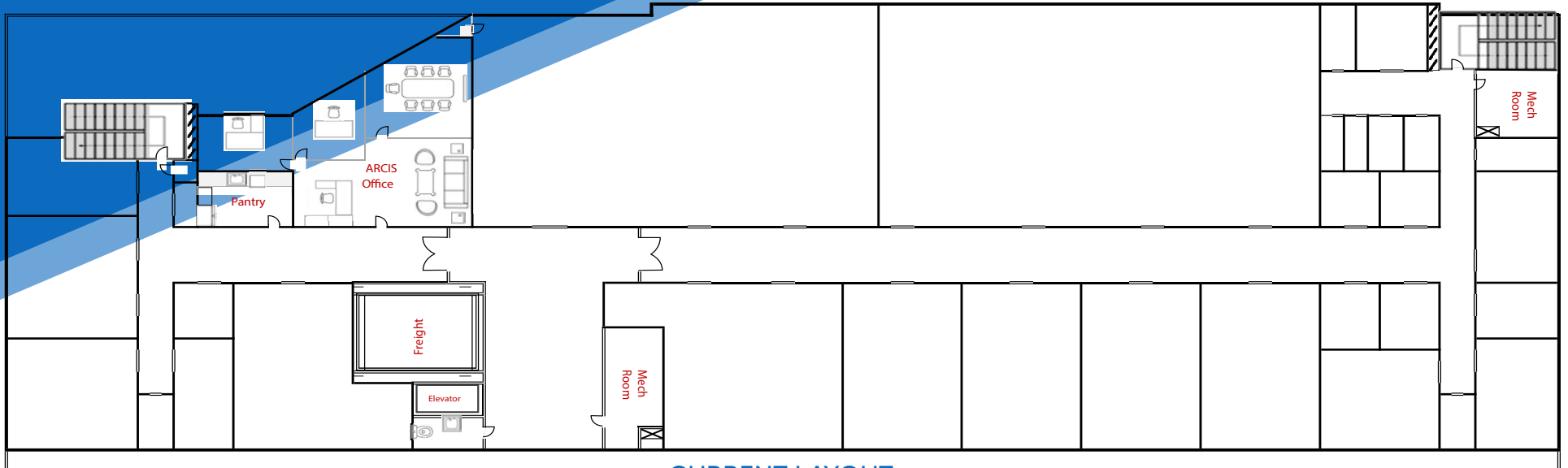


All information supplied is from sources deemed reliable and is furnished subject to errors, omissions, modifications, removal of the listing from sale or lease, and to any listing conditions, including the rates and manner of payment of commissions for particular offerings imposed by Meridian Capital Group. This information may include estimates and projections prepared by Meridian Capital Group with respect to future events, and these future events may or may not actually occur. Such estimates and projections reflect various assumptions concerning anticipated results. While Meridian Capital Group believes these assumptions are reasonable, there can be no assurance that any of these estimates and projections will be correct. Therefore, actual results may vary materially from these estimates and projections. Any square footage dimensions set forth are approximate.

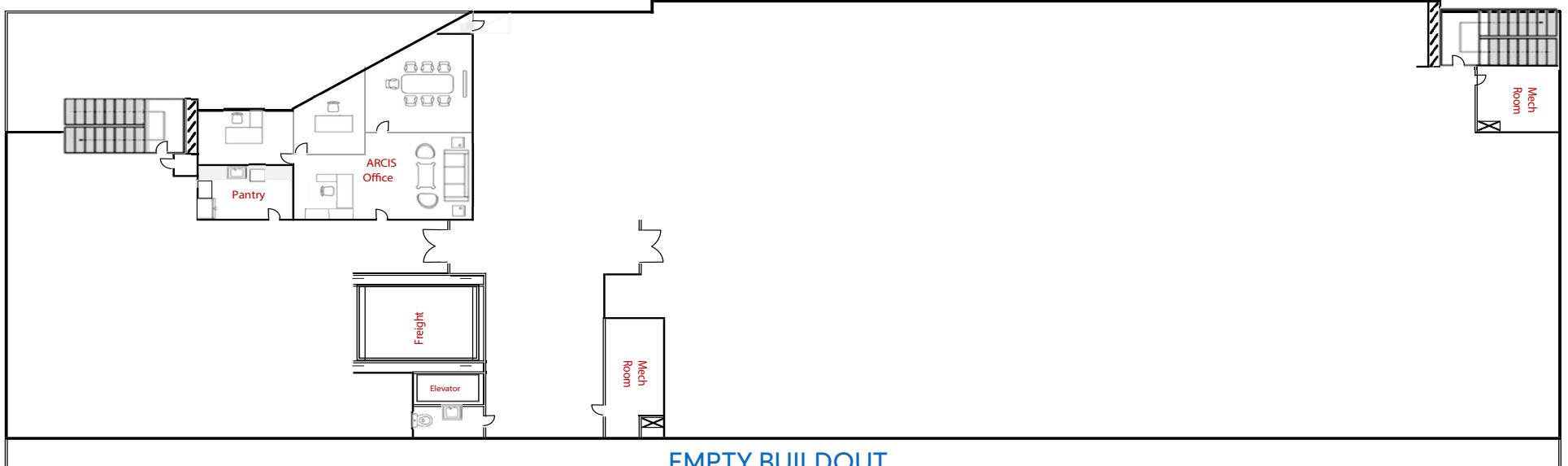
122 WEST 146<sup>TH</sup> STREET

HARLEM, NYC | Between Malcolm X and Clayton Powell Jr. Blvds

ART STORAGE FACILITY FOR LEASE



CURRENT LAYOUT



EMPTY BUILDOUT

FLOOR PLAN | THIRD FLOOR

JAMES FAMULARO

President  
646.658.7373  
jfamularo@meridiancapital.com

JACOB MAYER

Associate  
212.468.5926  
jmayer@meridiancapital.com

COLE KLEPPINGER

Associate  
212.468.5993  
ckleppinger@meridiancapital.com

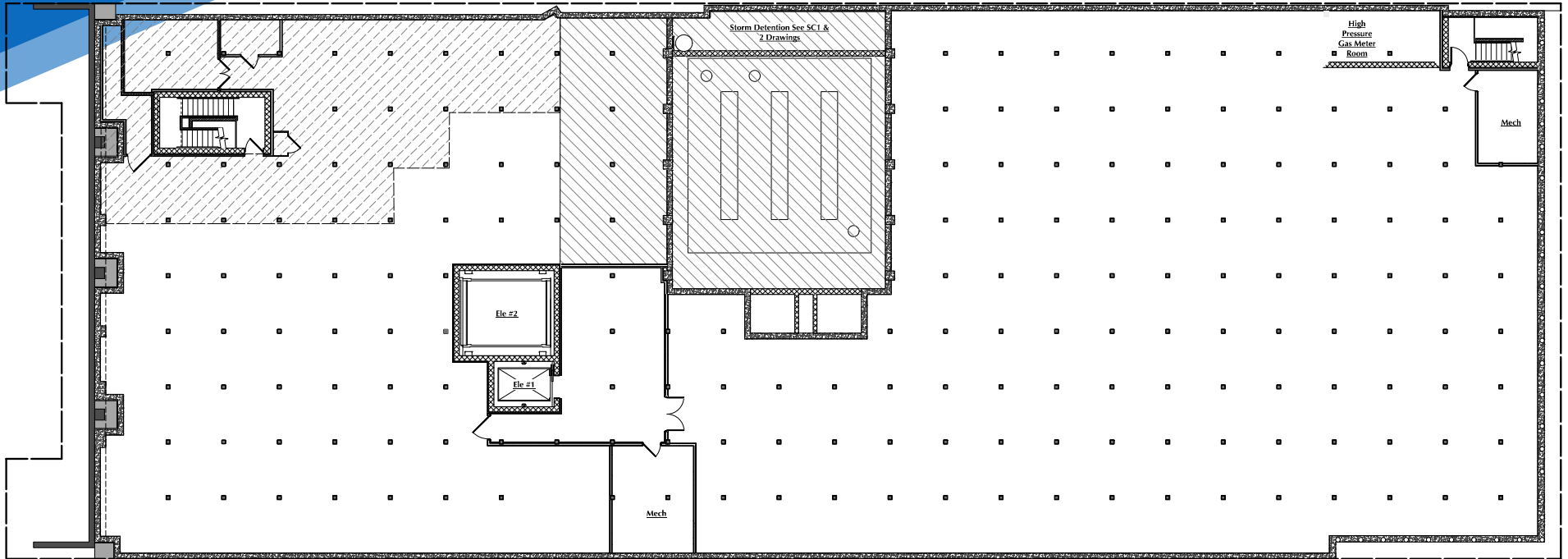


All information supplied is from sources deemed reliable and is furnished subject to errors, omissions, modifications, removal of the listing from sale or lease, and to any listing conditions, including the rates and manner of payment of commissions for particular offerings imposed by Meridian Capital Group. This information may include estimates and projections prepared by Meridian Capital Group with respect to future events, and these future events may or may not actually occur. Such estimates and projections reflect various assumptions concerning anticipated results. While Meridian Capital Group believes these assumptions are reasonable, there can be no assurance that any of these estimates and projections will be correct. Therefore, actual results may vary materially from these estimates and projections. Any square footage dimensions set forth are approximate.

122 WEST 146<sup>TH</sup> STREET  
HARLEM, NYC | Between Malcolm X and Clayton Powell Jr. Blvds

ART STORAGE FACILITY FOR LEASE

FLOOR PLAN | LOWER LEVEL



EMPTY BUILDOUT

JAMES FAMULARO

President  
646.658.7373  
jfamularo@meridiancapital.com

JACOB MAYER

Associate  
212.468.5926  
jmayer@meridiancapital.com



All information supplied is from sources deemed reliable and is furnished subject to errors, omissions, modifications, removal of the listing from sale or lease, and to any listing conditions, including the rates and manner of payment of commissions for particular offerings imposed by Meridian Capital Group. This information may include estimates and projections prepared by Meridian Capital Group with respect to future events, and these future events may or may not actually occur. Such estimates and projections reflect various assumptions concerning anticipated results. While Meridian Capital Group believes these assumptions are reasonable, there can be no assurance that any of these estimates and projections will be correct. Therefore, actual results may vary materially from these estimates and projections. Any square footage dimensions set forth are approximate.

# 122 WEST 146<sup>TH</sup> STREET

HARLEM, NYC | Between Malcolm X and Clayton Powell Jr. Blvds

## ART STORAGE FACILITY FOR LEASE



NEIGHBORS

### JAMES FAMULARO

President  
646.658.7373  
jfamularo@meridiancapital.com

### JACOB MAYER

Associate  
212.468.5926  
jmayer@meridiancapital.com

### COLE KLEPPINGER

Associate  
212.468.5993  
ckleppinger@meridiancapital.com



All information supplied is from sources deemed reliable and is furnished subject to errors, omissions, modifications, removal of the listing from sale or lease, and to any listing conditions, including the rates and manner of payment of commissions for particular offerings imposed by Meridian Capital Group. This information may include estimates and projections prepared by Meridian Capital Group with respect to future events, and these future events may or may not actually occur. Such estimates and projections reflect various assumptions concerning anticipated results. While Meridian Capital Group believes these assumptions are reasonable, there can be no assurance that any of these estimates and projections will be correct. Therefore, actual results may vary materially from these estimates and projections. Any square footage dimensions set forth are approximate.