

FOR LEASE

550 MAIN STREET, PLACERVILLE, CA.



NEWMARK

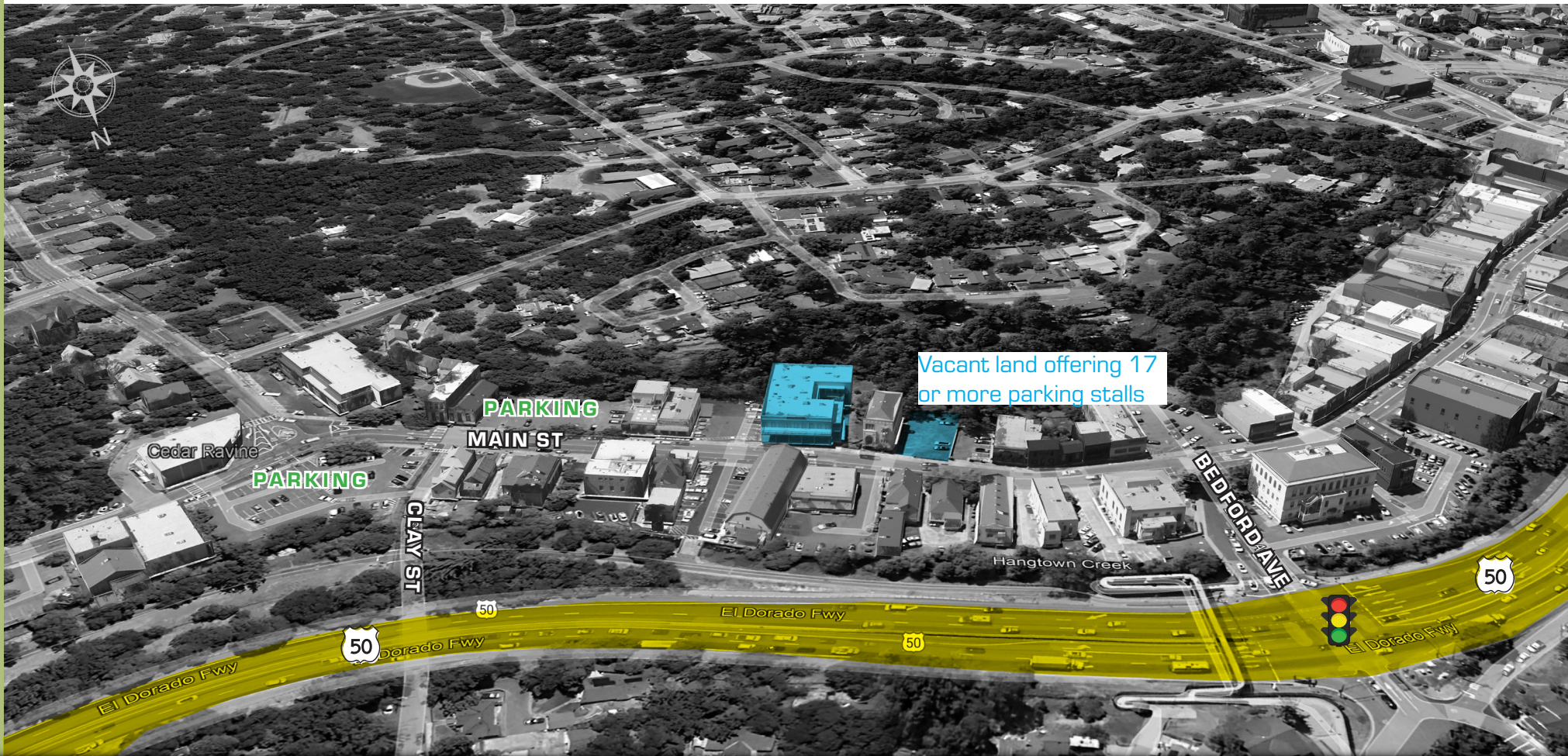
Tom Conwell

916-569-2380

tom.conwell@nrmk.com

CA RE Lic# 01394155

- Offered at \$1.85/SF Full Service (Janitorial once per week)
- Two-story multi-tenant building
- Beautiful courtyard
- Secure gated entrance to the courtyard
- Handicap-accessible elevator
- Located in the heart of historic downtown Placerville
- Chamber of Commerce directly next door
- El Dorado County Courthouse directly across the street
- Marshall Medical Center just 2 blocks away
- Numerous restaurants within easy walking distance
- Well maintained building
- On-site generator

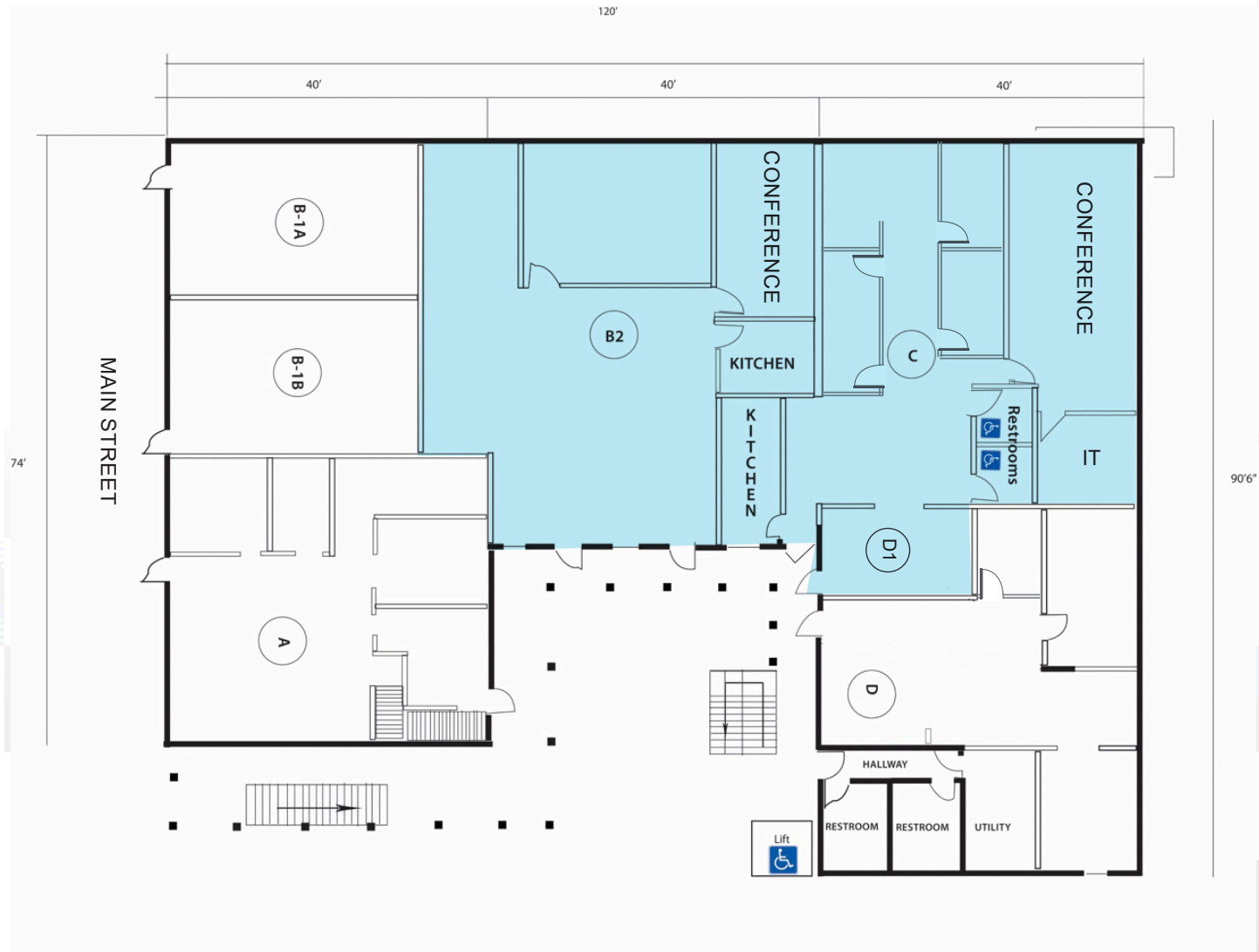


First Floor

Suites Ready for Occupancy

- Suite B2 - ±2,436 SF
- Suite C & D1 - ±2,369 SF

Combined: ±4,805 SF



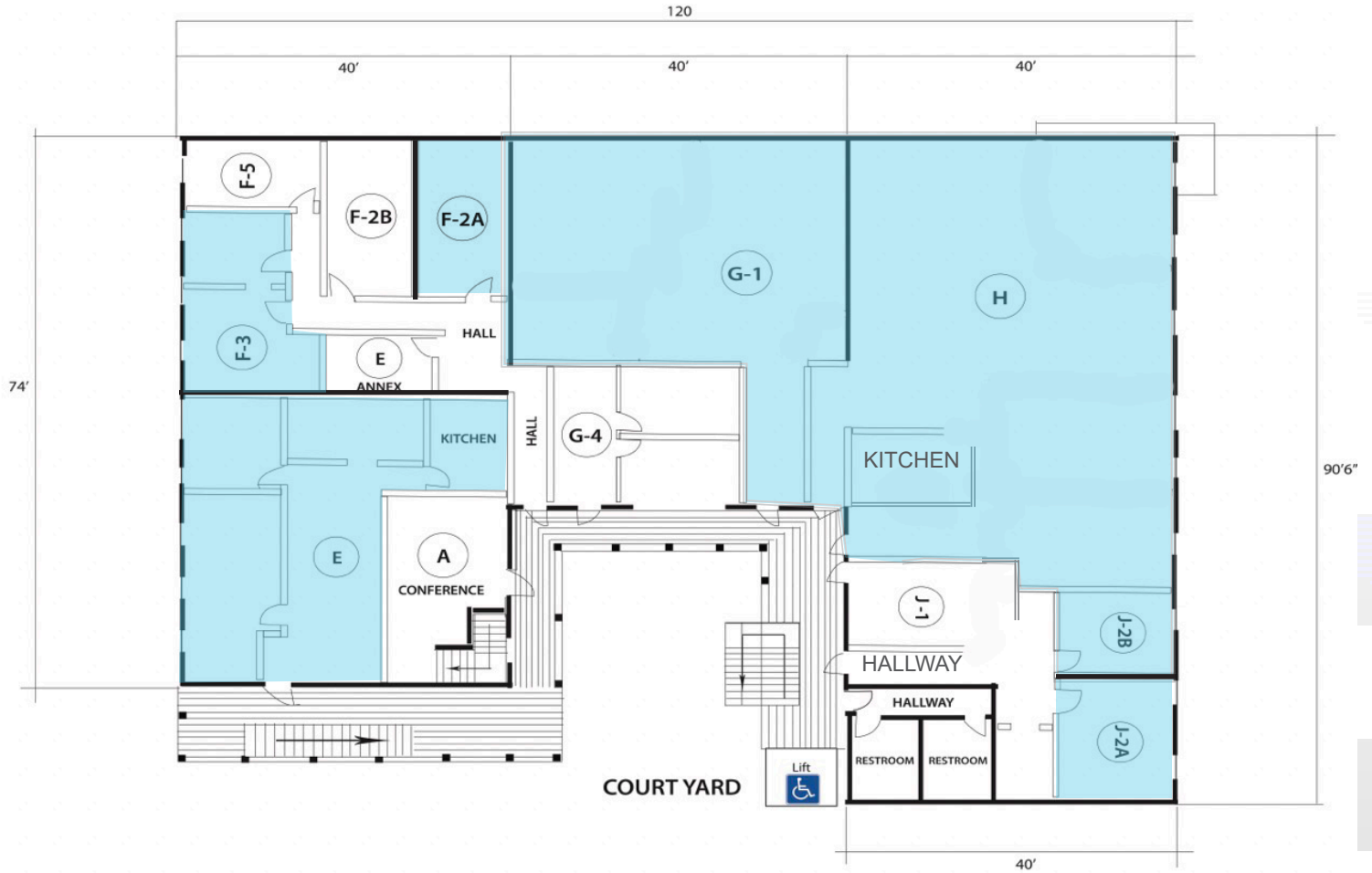


Second Floor

Suites Ready for Occupancy

- Suite E - ±1,236 SF
- Suites F3 & 4 - ±365 SF
- Suite G1 - ±1,336 SF
- Suite H - ±1,460 SF
- Suite J-2A - ±350 SF
- Suite J2B - ±177 SF

- Combined: ±3,323 SF







Placerville Amenities Map

550 MAIN STREET, PLACERVILLE, CA

Tom Conwell
916-569-2380
tom.conwell@nmrk.com
CA RE Lic# 01394155



The distributor of this communication is performing acts for which a real estate license is required. The information contained herein has been obtained from sources deemed reliable but has not been verified and no guarantee, warranty or representation, either express or implied, is made with respect to such information. Terms of sale or lease and availability are subject to change or withdrawal without notice.

All images used are for illustrative purposes only and are intended to convey the concept and vision for the asset. They are for guidance only, and do not necessarily represent a true and accurate depiction of the asset.

Floor plans are intended to give a general indication of the proposed layout only. All images and dimensions are not intended to form part any contract or warranty.

NMRK-NWMKTG OFFICES 2/25

NEWMARK