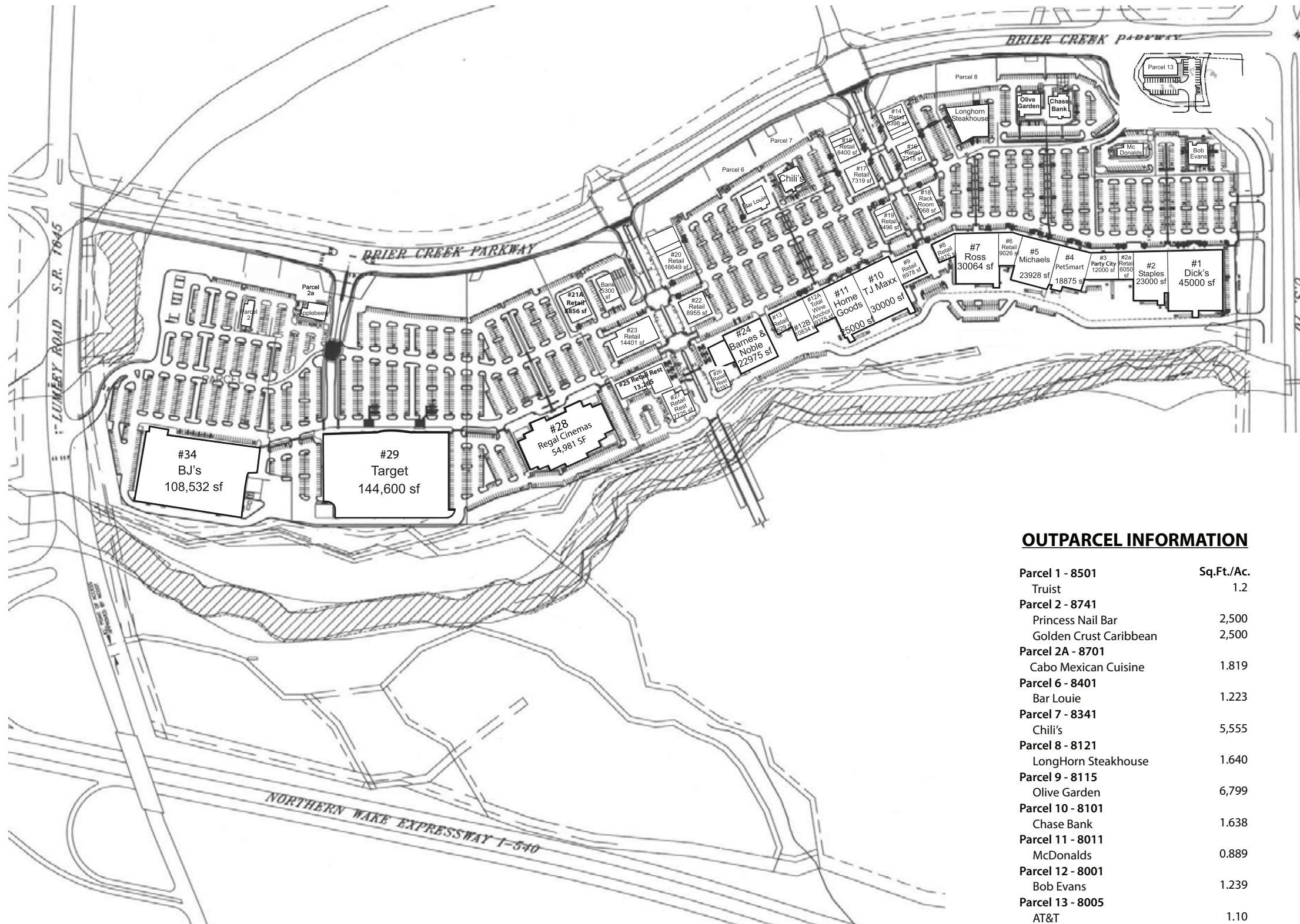


# BRIER CREEK COMMONS SHOPPING CENTER

Raleigh, North Carolina



## LEASING INFORMATION

<b>Building 1 - 8021</b> Dick's Sporting Goods	45,000 SF	<b>Building 20 - 8411</b> 101: Azitra	4,268 SF
<b>Building 2 - 8041</b> Staples	23,000 SF	103: Sally Beauty	1,525 SF
<b>Building 2A - 8081</b> 101: Hallmark	4,982 SF	105: Umami Japanese Steakhouse & Sushi	6,888 SF
<b>Building 3 - 8081</b> 115: Five Below	12,000 SF	107: Edward Jones	968 SF
<b>Building 4 - 8111</b> PetSmart	18,968 SF	109: Noodles & Company	3,000 SF
<b>Building 5 - 8131</b> Michael's	23,928 SF	<b>Building 21A - 8511</b> BlueCross BlueShield	4,856 SF
<b>Building 6 - 8161</b> Versona	9,026 SF	Brixx Pizza	4,000 SF
<b>Building 7 - 8191</b> Ross Dress for Less	30,064 SF	<b>Building 22 - 8421</b> 101: Jason's Deli	4,000 SF
<b>Building 8 - 8231</b> 104: MyEyeDr.	5,875 SF	107: Vitamin Shoppe	4,955 SF
<b>Building 9 - 8331</b> 101: Carter's	3,978 SF	<b>Building 23 - 8521</b> 101: Briar Creek Beer Garden	2,500 SF
103: Sephora	5,000 SF	103: Rocky Mtn. Chocolate	1,190 SF
<b>Building 10 - 8361</b> TJ Maxx	30,000 SF	105: GiGi's Cupcake	1,181 SF
<b>Building 11 - 8371</b> HomeGoods	25,000 SF	109: Greek Fiesta	3,319 SF
<b>Building 12A - 8381</b> Total Wine & More	9,375 SF	115: VIO Med Spa (coming soon)	2,011 SF
<b>Building 12B - 8391</b> Skechers	10,834 SF	117: Sizzlin Stirfry Asian Bistro	1,200 SF
<b>Building 13 - 8399</b> Bath & Body Works	4,629 SF	119: Champa Thai & Sushi	3,000 SF
<b>Building 14 - 8201</b> 101: Caribou Coffee	1,638 SF	<b>Building 24 - 8431</b> Barnes & Noble	22,975 SF
103: European Wax Center	1,960 SF	<b>Building 25 - 8531</b> 101: Men's Wearhouse	5,847 SF
105: Massage Envy	3,000 SF	107: AKT	2,492 SF
107: Aladdin's Eatery	1,800 SF	109: FF Chicken	2,500 SF
<b>Building 15 - 8301</b> 101: Rise Biscuits & Donuts	2,835 SF	113: The Joint	1,210 SF
103: Briar Creek Dental Studio	1,782 SF	115: Crumbl Cookies	1,216 SF
105: GameStop	1,283 SF	<b>Building 26A - 8441</b> Talbots	5,949 SF
107: Slice of NY Pizza	2,500 SF	<b>Building 26B - 8451</b> 101: Blo Hair Salon	4,242 SF
<b>Building 16 - 8211</b> 101: Amazing Lash Studio	1,600 SF	<b>Building 27 - 8551</b> Epic Chophouse (coming soon)	7,725 SF
103: Bruegger's	1,556 SF	<b>Building 34 - 8811</b> BJ's	108,532 SF
107: Alpaca Chicken	4,159 SF	<b>Building 28 - 8611</b> Regal Cinemas	54,981 SF
<b>Building 17 - 8311</b> 101: GNC	1,237 SF	<b>Building 29 - 8651</b> Target	144,600 SF
103: Great Clips	1,200 SF		
105: UPS Store	1,882 SF		
107: Verizon	3,000 SF		
<b>Building 18 - 8221</b> Rack Room Shoes	7,068 SF		
<b>Building 19 - 8321</b> 101: Dairy Queen	1,200 SF		
103: Advance Tailors	1,100 SF		
107: Unique Nails	2,596 SF		
109: Carolina Vacuums & More	1,600 SF		

## OUTPARCEL INFORMATION

Parcel	Description	Sq.Ft./Ac.
<b>Parcel 1 - 8501</b>	Truist	1.2
<b>Parcel 2 - 8741</b>	Princess Nail Bar	2,500
	Golden Crust Caribbean	2,500
<b>Parcel 2A - 8701</b>	Cabo Mexican Cuisine	1.819
<b>Parcel 6 - 8401</b>	Bar Louie	1.223
<b>Parcel 7 - 8341</b>	Chili's	5,555
<b>Parcel 8 - 8121</b>	LongHorn Steakhouse	1.640
<b>Parcel 9 - 8115</b>	Olive Garden	6,799
<b>Parcel 10 - 8101</b>	Chase Bank	1.638
<b>Parcel 11 - 8011</b>	McDonalds	0.889
<b>Parcel 12 - 8001</b>	Bob Evans	1.239
<b>Parcel 13 - 8005</b>	AT&T	1.10
	Mattress Firm	
	Jimmy John's	