



# FOR LEASE

PACIFIC PARK EXECUTIVE PLAZA

12 JOURNEY | ALISO VIEJO

## CONTACT

**JAKE FISCHBECK**  
SENIOR ASSOCIATE  
**LICENSE ID# 02090693**  
949.790.3118  
JFISCHBECK@LEEIRVINE.COM

# PROPERTY FEATURES

- HIGH IMAGE 2-STORY FREESTANDING OFFICE PROPERTY
- ELEVATOR SERVICED
- OPTIMAL SOUTH ORANGE COUNTY LOCATION
- FREE SURFACE PARKING, ALLOTTED 4:1,000 SF
- EASY ACCESS TO THE 5, 73, 405, & 133 FREEWAYS
- CLOSE PROXIMITY TO ABUNDANT RETAIL SHOPS AND NUMEROUS RESIDENTIAL DEVELOPMENTS



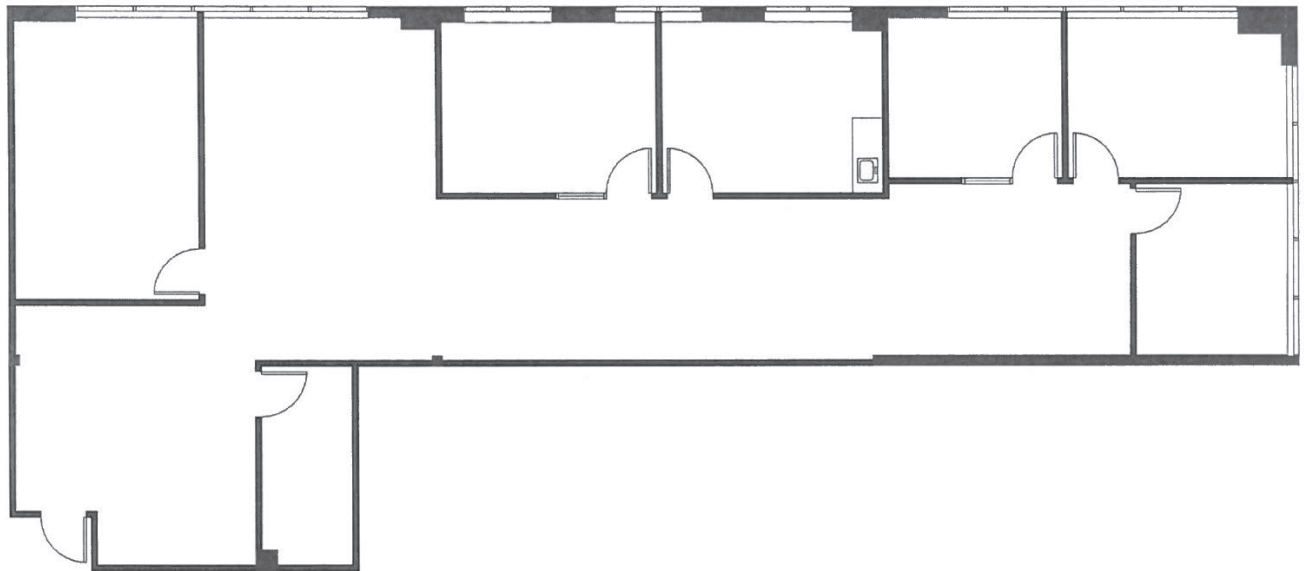
## AVAILABILITY

SUITE	SQ FT	LEASE RATE/SF	DESCRIPTION
255	2,691	\$1.23 FSG**	FOUR (4) PRIVATE OFFICES, CONFERENCE ROOM, KITCHEN AND OPEN WORK AREA WITH DEDICATED RECEPTION.

*\$1.23 FSG Per Month for the First 6 Months  
\*\*Minimum 3 Year Lease to Qualify for Promo Rate\*\**



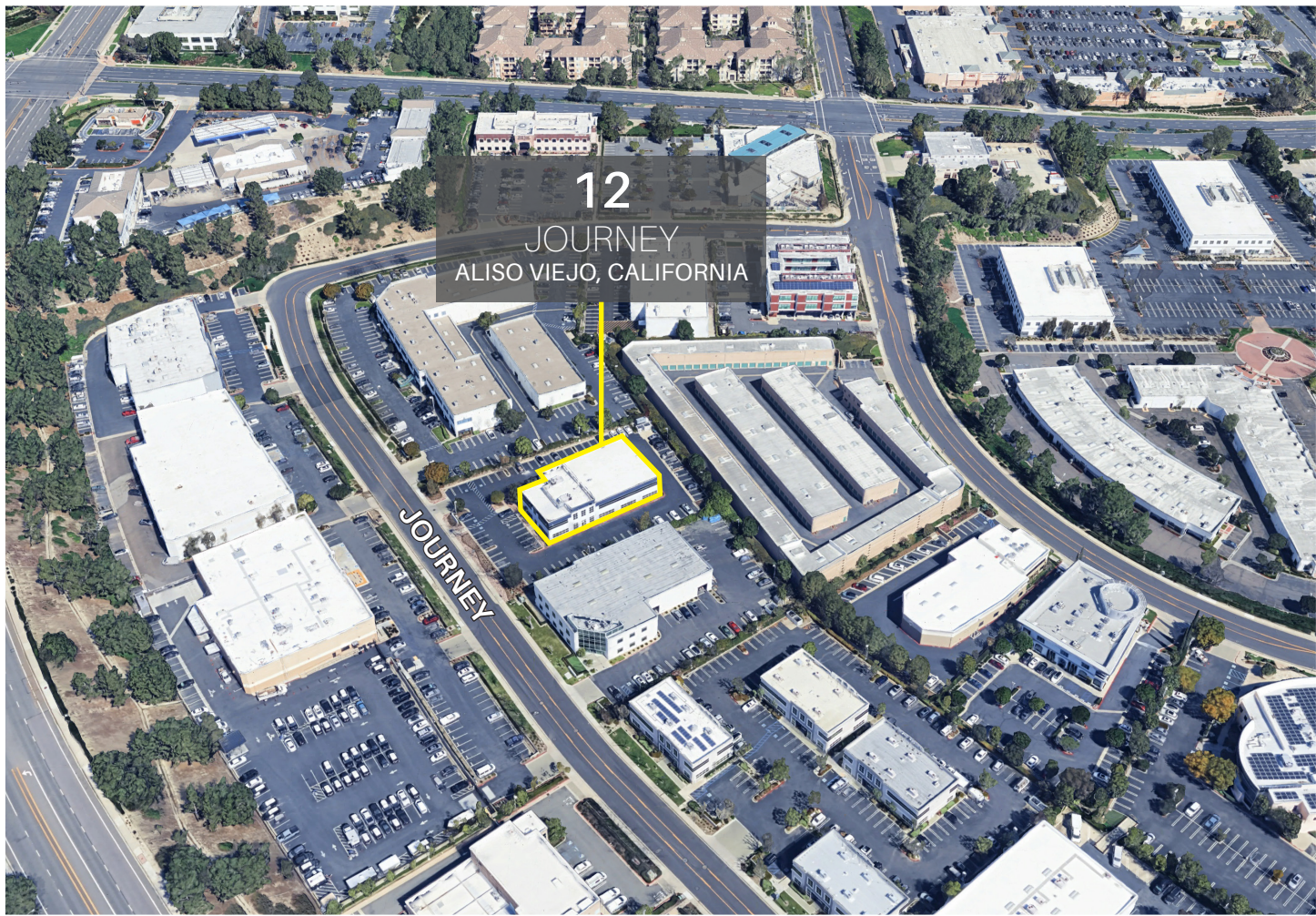
SUITE 255 - 2,691 SQ FT





# 12 JOURNEY

ALISO VIEJO  
CALIFORNIA



**LEE &  
ASSOCIATES**

COMMERCIAL REAL ESTATE SERVICES

FISCHBECK

**JAKE FISCHBECK**  
SENIOR ASSOCIATE  
LICENSE ID# 02090693  
949.790.3118  
JFISCHBECK@LEEIRVINE.COM