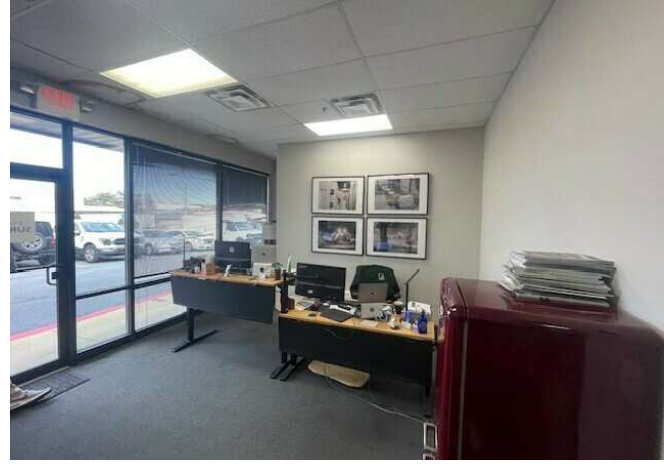


5,700± SF For Sublease
Ardmore Industrial Center



3321 75th Avenue

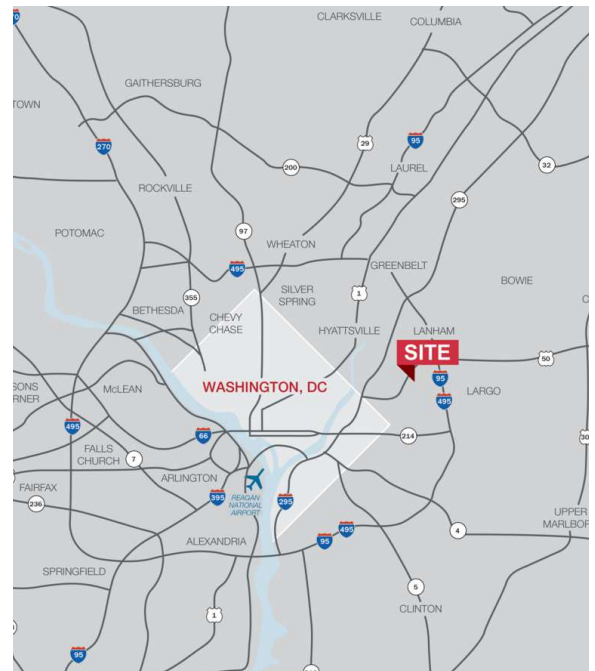
Landover, Maryland 20785

Property Highlights

- SUITE L/N: 5,700± SF
- Available October 2025 thru May 2027
- One drive-in and one dock
- Existing showroom/office
- 20' clear ceiling height
- Visibility from 75th Avenue
- Immediate proximity to Route 50 and the Capital Beltway (I-495/I-95)
- Close to Landover Metro station (Blue/Orange/Silver Line)

Available Spaces

Spaces	Lease Rate	Lease Type	Size (SF)	Buildout
Suite L/N	Negotiable	NNN	5,700	-



Peter Burleigh

O: 301 918 2913
pburleigh@naimichael.com

Brady Thompson

O: 301 918 2912
bthompson@naimichael.com

Lance Schwarz

O: 301 918 2938
lschwarz@naimichael.com



OWNED BY:



10100 Business Pkwy
Lanham, MD 20706
301 459 4400 tel
www.naimichael.com