

# 135 WEST 27

## *PENN PLAZA DISTRICT*

In the heart of the Hudson Yards, Manhattan West and the Penn District redevelopments

### **LOCATION**

Between 6th & 7th Avenues

### **TERM**

Flexible

### **PRICING**

Upon Request

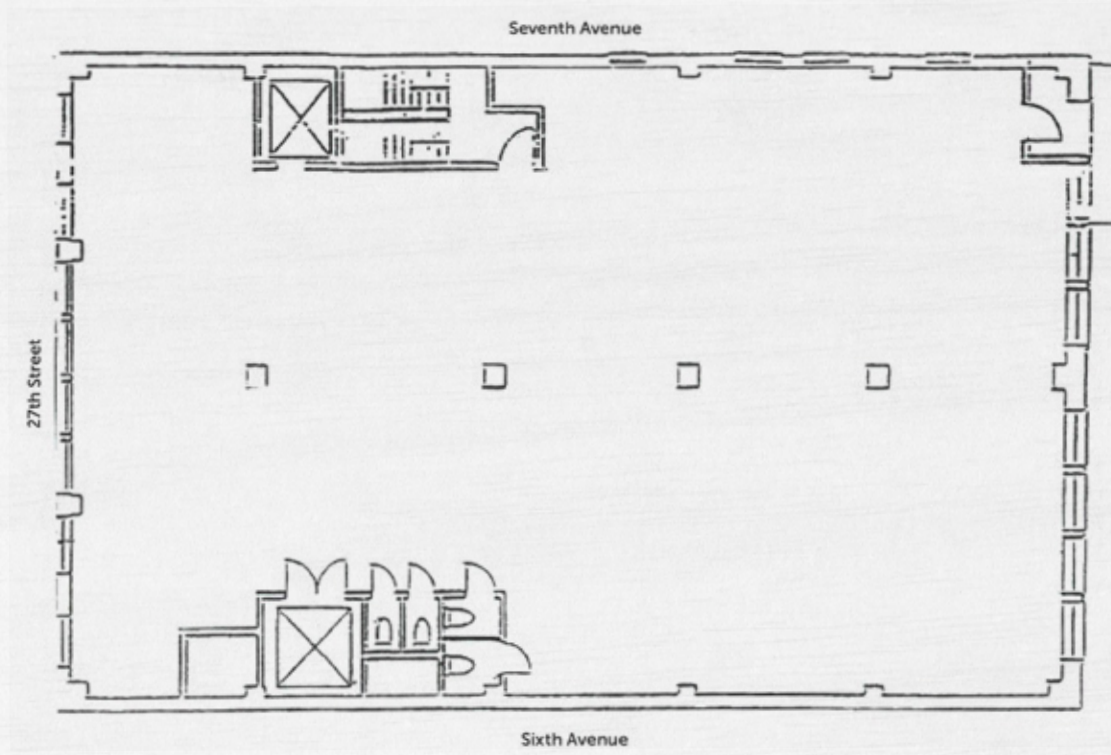
### **PREMISES**

**4<sup>TH</sup> FL** \_\_\_\_\_ **2,500 – 5,000 SF**



MADISON SQUARE GARDEN

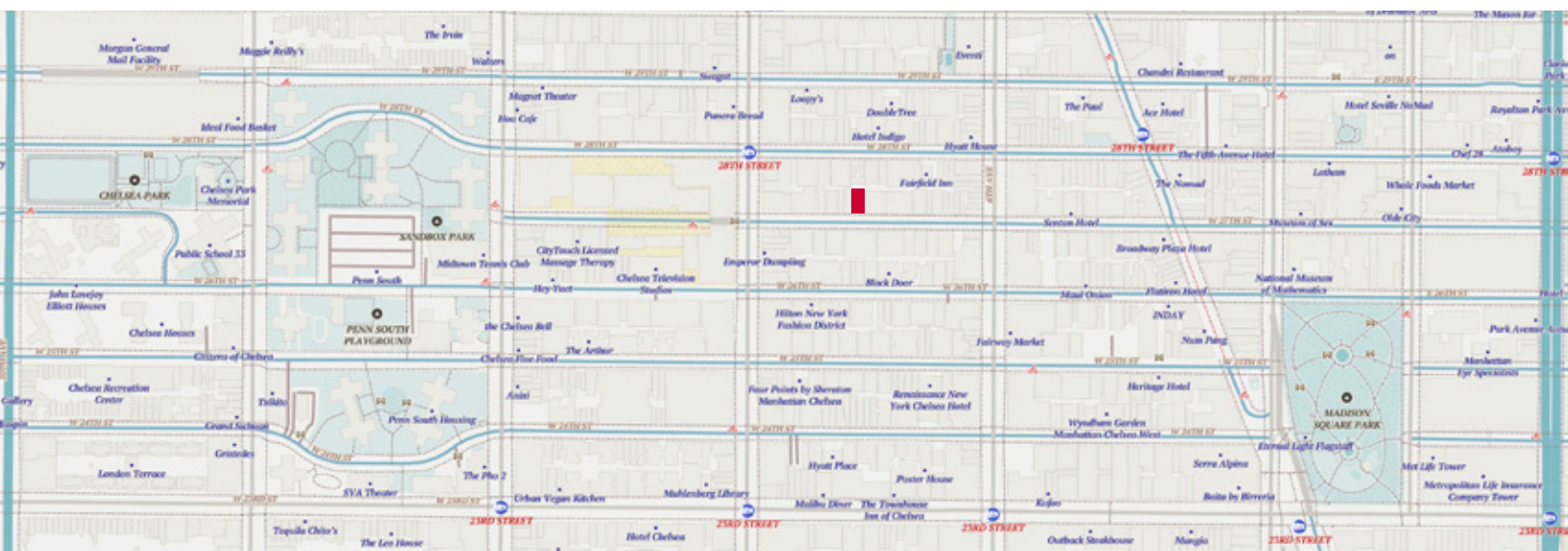




**ENTIRE 4<sup>TH</sup> FLOOR | 5,000 RSF**

- 2 offices
- 1 conference room
- Large open area
- Delivered partially furnished





MADISON SQUARE GARDEN



LIRR



## NEIGHBORHOOD

- Directly across Penn Station, Amtrak and Madison Square Garden
- Neighbors – Facebook, Moynihan Food Hall, Peloton, Whole Foods, Shops at Manhattan West
- Steps from the following:

1 2 3 7 A C E B D F M N Q R W



CITIBIKE



THE BAR



**WOODY KING**

Managing Director

212.776.4352

wking@lee-associates.com