

450 Main Street

Newcastle, CA

Individual Offices for Lease

\$500 per month



Contact:

Shana Lennon

Vice President

Lic. 01446203

+1 916 781 4868

shana.lennon@cbre.com

www.cbre.us/shana.lennon

Office Space

450 Main Street, Newcastle, CA

For Lease

Property Highlights

- **Four (4) offices for lease**
- **Asking Lease Price \$500 per month**

The commercial property located at 450 Main Street in Newcastle, CA, is a prime opportunity perfectly situated in the heart of the charming downtown area.

Surrounding the property, Newcastle boasts a vibrant community with an array of amenities. Within walking distance, visitors can enjoy local boutiques, cozy cafes, and restaurants that highlight the region's culinary offerings. Additionally, Newcastle's proximity to Interstate 80 ensures easy access to neighboring towns and cities, making it a strategic location for businesses looking to attract a diverse clientele. With its combination of location and community-centric amenities, 450 Main Street presents a unique chance for growth and success.



2024 Estimated Demographics - 3-Miles



9,333

Daytime Population



411

Businesses



\$171,709

Avg. HH Income



11,057

Population



86.1%

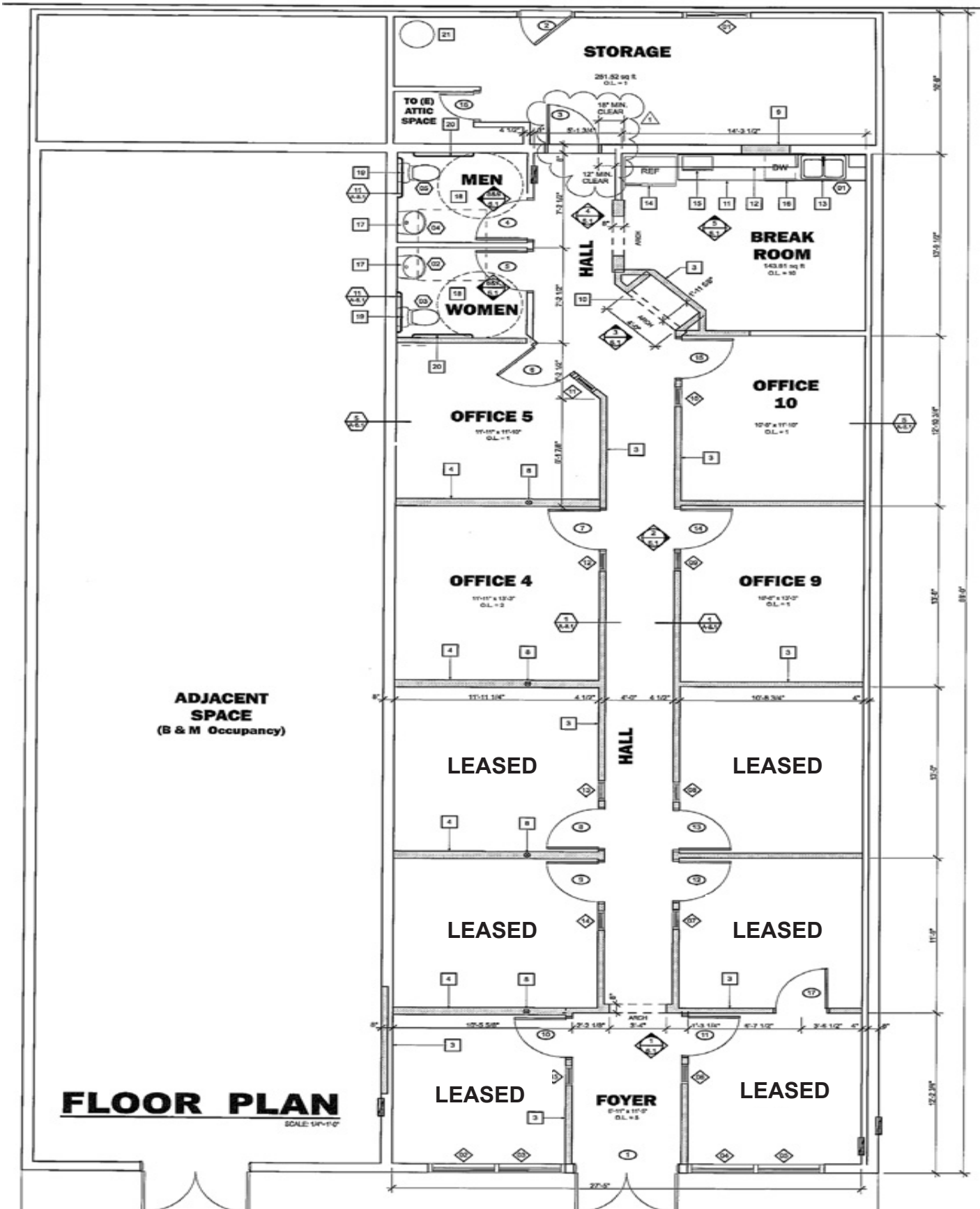
Owner-Occupied Units

Office Space

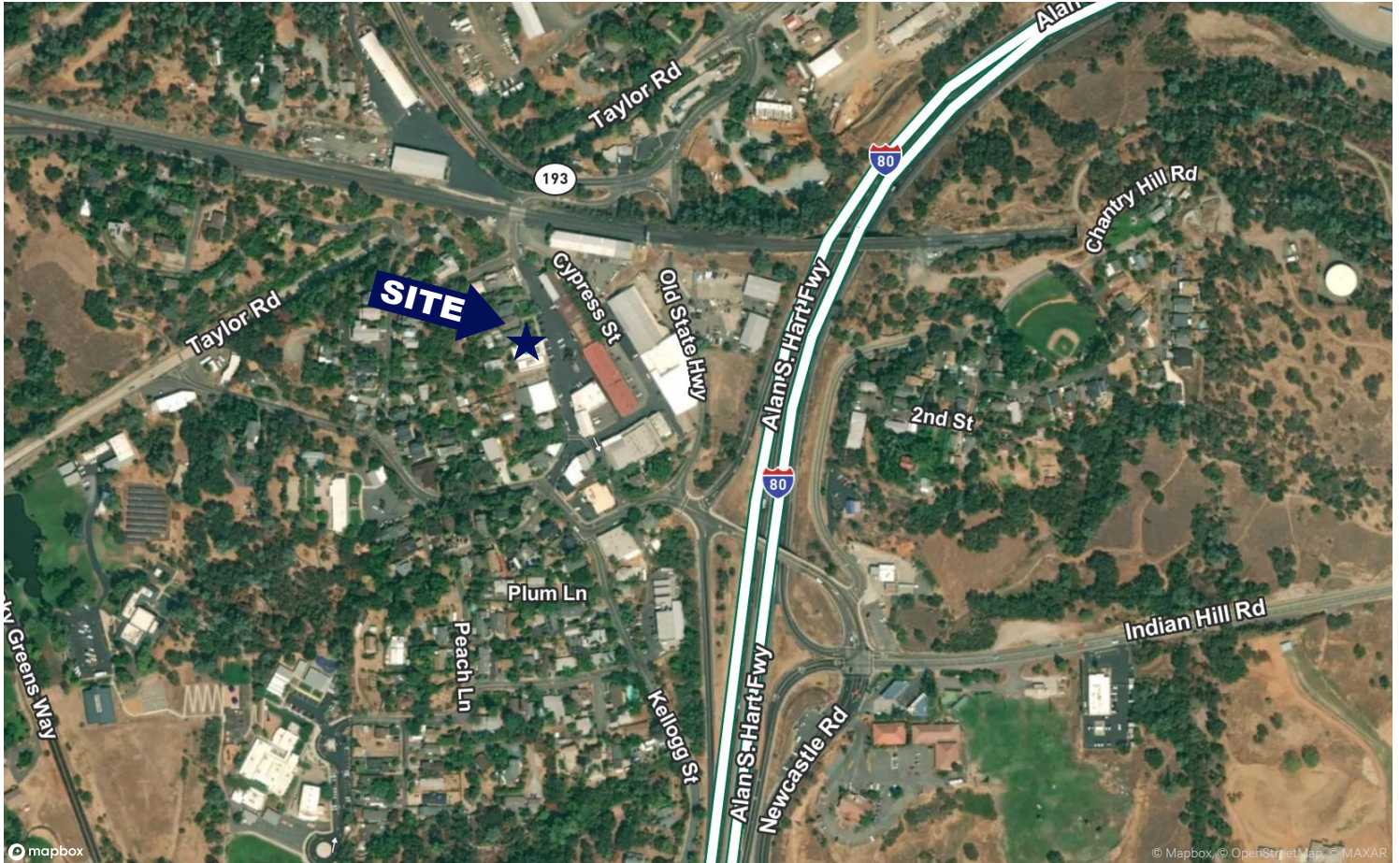
450 Main Street, Newcastle, CA

For Lease

Floor Plan



Aerial



Contact Information:

Shana Lennon

Vice President
+1 916 781 4868
shana.lennon@cbre.com
Lic. 01446203

© 2024 CBRE, Inc. All rights reserved. This information has been obtained from sources believed reliable, but has not been verified for accuracy or completeness. You should conduct a careful, independent investigation of the property and verify all information. Any reliance on this information is solely at your own risk. CBRE and the CBRE logo are service marks of CBRE, Inc. All other marks displayed on this document are the property of their respective owners, and the use of such logos does not imply any affiliation with or endorsement of CBRE. Photos herein are the property of their respective owners. Use of these images without the express written consent of the owner is prohibited.