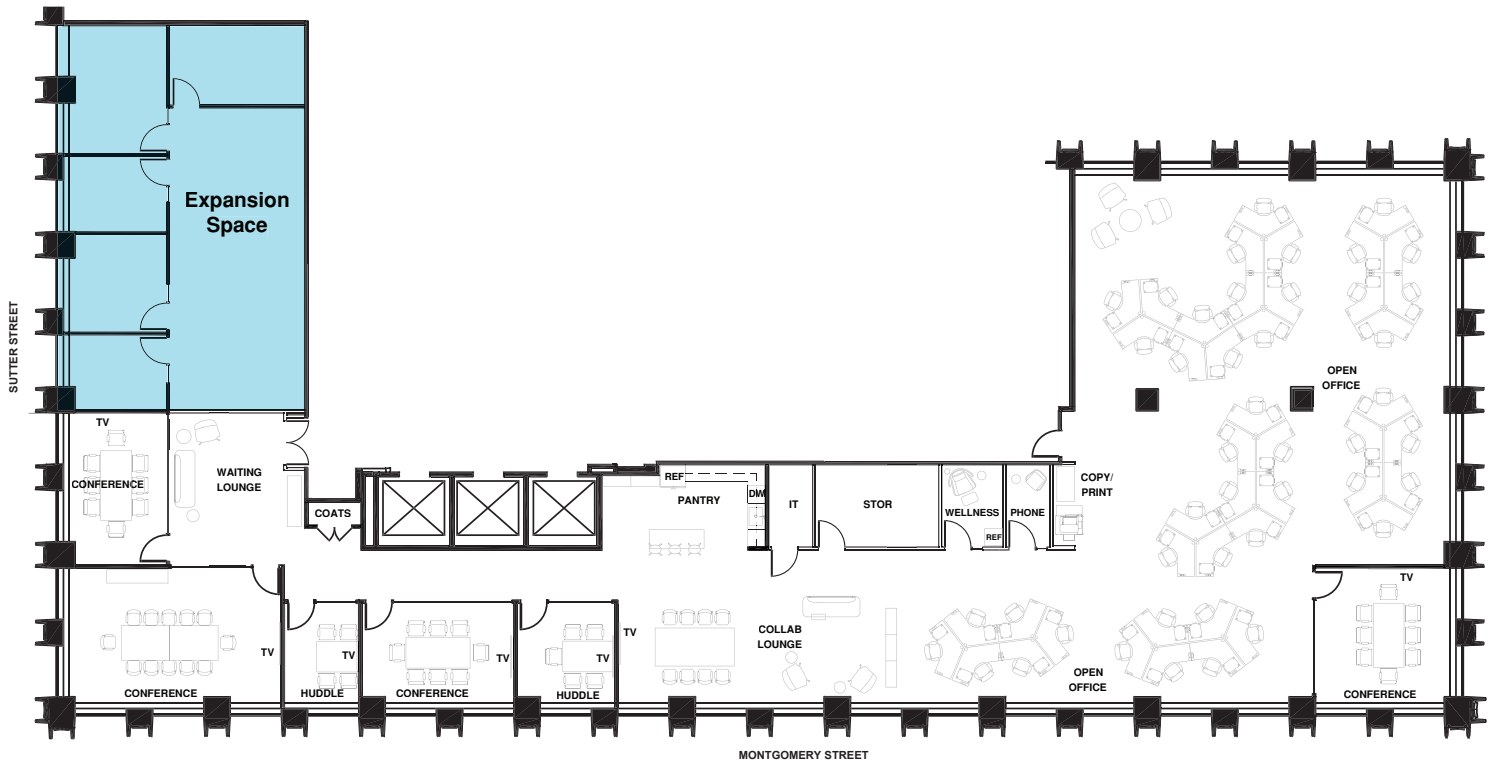


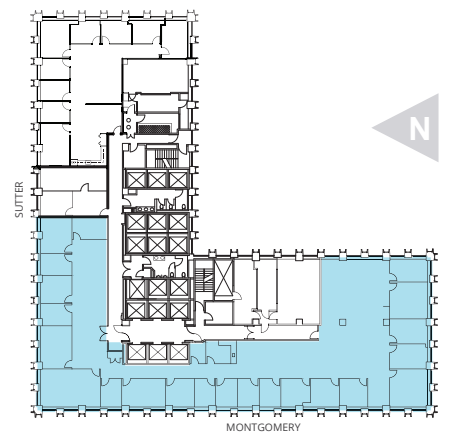
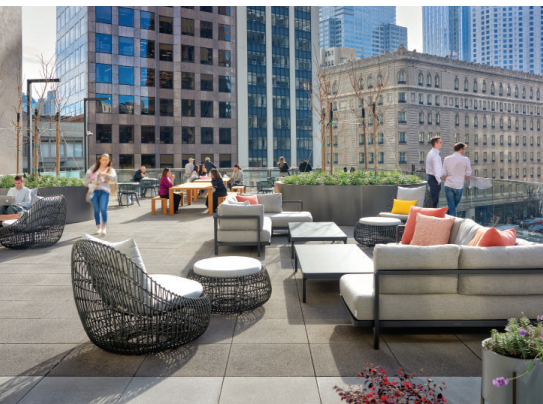
SUITE 900

44
MONTGOMERY

8,300 - 9,942 rsf | hypothetical layout



- Double door entry off of elevator
- 6 conference/meeting rooms
- Phone room
- Approx. 45 workstations
- Wellness room
- Open kitchen



Kelly Glass
415 322 5062
kelly.glass@avisonyoung.com
Re Lic: 01335179

Colton Hanley
415 301 3181
colton.hanley@avisonyoung.com
Re Lic: 02089768

Elliot Ashkenazy
415 596 6886
elliot.ashkenazy@avisonyoung.com
Re Lic: 02280616

AVISON
YOUNG

BEACON
CAPITAL PARTNERS