



Churchman's Place

1101 Churchman's Road, Newark, Delaware 19713

Property Features

- +/-2,000 - +/-4,000 SF
- Located on Churchman's Road near I-95 and Route 1 Interchange
- Situated in the highly desirable Metroform Area near the Christiana Hospital, Christiana Mall, Bank of America Christiana Executive Campus and Home Depot
- Great visibility and easy access from both directions
- 5 Mile Population: 127,890
- Med.HH Income: \$73,249

| Demographics | 1 Mile | 3 Miles | 5 Miles |
|-------------------|--------|---------|---------|
| Total Population: | 4,265 | 40,412 | 142,094 |
| Total Households: | 1,492 | 14,178 | 48,205 |
| Traffic Count: | 23,258 | 48,319 | 63,449 |



For more information:

Jim O'Hara, Jr.

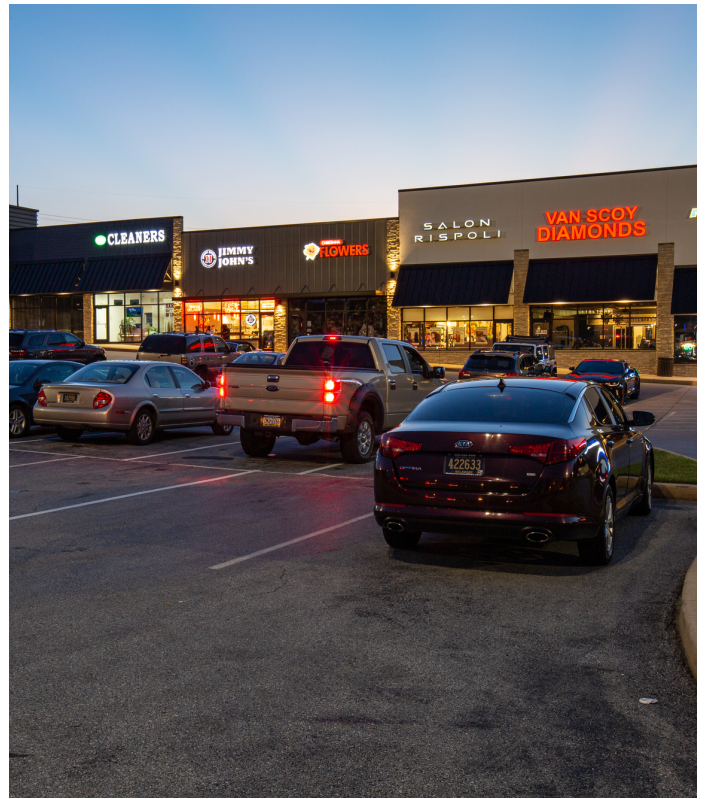
302 322 9500 • jimohara@emoryhill.com

NO WARRANTY OR REPRESENTATION, EXPRESS OR IMPLIED, IS MADE AS TO THE ACCURACY OF THE INFORMATION CONTAINED HEREIN, AND THE SAME IS SUBMITTED SUBJECT TO ERRORS, OMISSIONS, CHANGE OF PRICE, RENTAL OR OTHER CONDITIONS, PRIOR SALE, LEASE OR FINANCING, OR WITHDRAWAL WITHOUT NOTICE, AND OF ANY SPECIAL LISTING CONDITIONS IMPOSED BY OUR PRINCIPALS NO WARRANTIES OR REPRESENTATIONS ARE MADE AS TO THE CONDITION OF THE PROPERTY OR ANY HAZARDS CONTAINED THEREIN ARE ANY TO BE IMPLIED.

Emory Hill Real Estate Services Inc
 10 Corporate Circle, New Castle, DE 19720
 302 322 9500

naiemoryhill.com

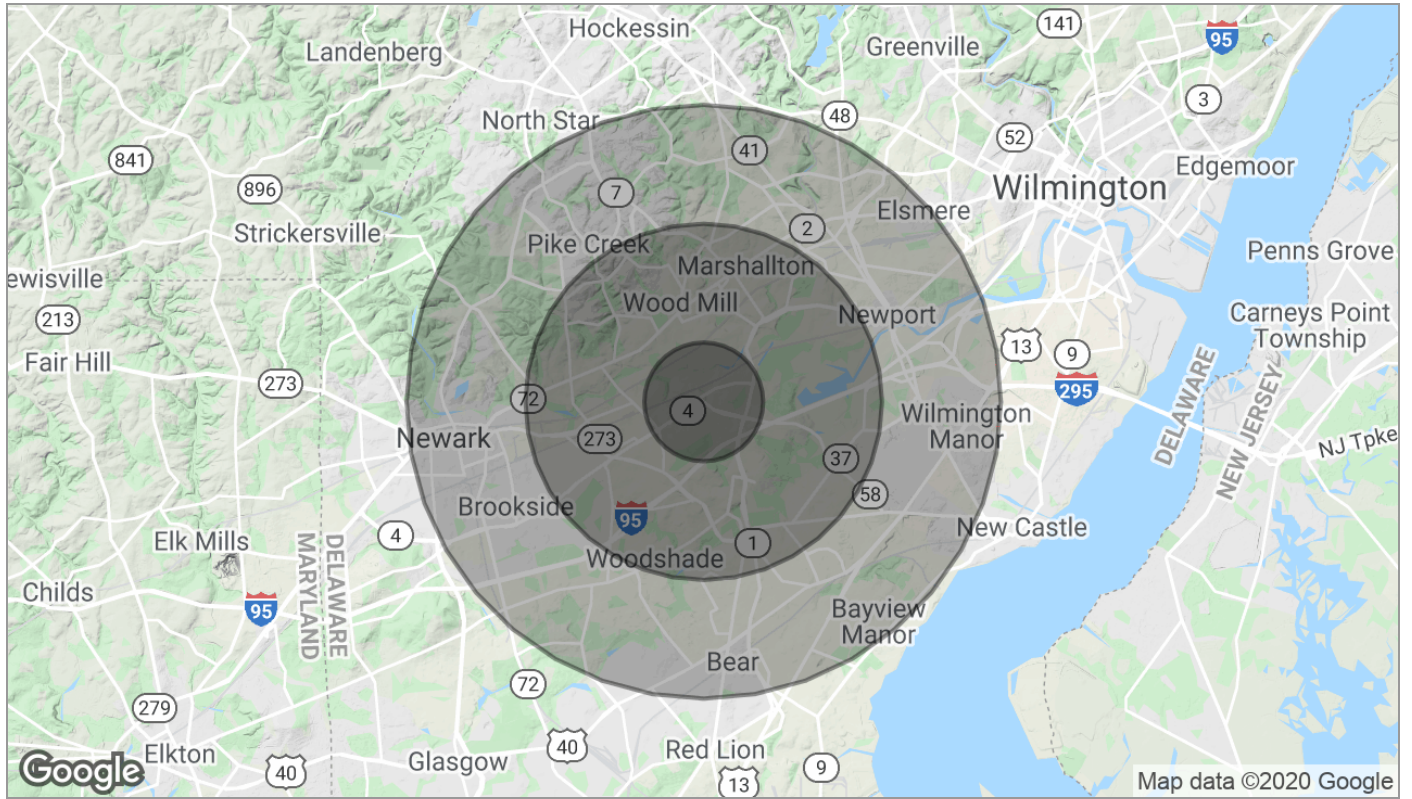
For Lease Retail



For Lease Retail



For Lease Retail



| | 1 Mile | 3 Miles | 5 Miles |
|--------------------------------|----------|-----------|-----------|
| Population | | | |
| TOTAL POPULATION | 4,265 | 40,412 | 142,094 |
| MEDIAN AGE | 32.4 | 33.2 | 31.7 |
| MEDIAN AGE (MALE) | 32.2 | 32.5 | 31.3 |
| MEDIAN AGE (FEMALE) | 32.1 | 33.8 | 32.4 |
| Households & Income | | | |
| TOTAL HOUSEHOLDS | 1,492 | 14,178 | 48,205 |
| # OF PERSONS PER HH | 2.9 | 2.9 | 2.9 |
| AVERAGE HH INCOME | \$87,278 | \$84,052 | \$77,393 |
| AVERAGE HOUSE VALUE | | \$271,250 | \$261,442 |
| Race | | | |
| % WHITE | 66.2% | 69.1% | 70.8% |
| % BLACK | 24.5% | 21.5% | 19.5% |
| % ASIAN | 7.5% | 6.8% | 5.9% |
| % HAWAIIAN | 0.0% | 0.0% | 0.0% |
| % INDIAN | 0.4% | 0.3% | 0.2% |
| % OTHER | 0.7% | 1.1% | 2.1% |
| Ethnicity | | | |
| % HISPANIC | 3.4% | 4.8% | 6.9% |

* Demographic data derived from 2010 US Census