

# FOR LEASE

## 19,800 SF INDUSTRIAL FLEX BUILDING

6551 CORPORATE PARK CIRCLE, FORT MYERS, FL 33966

**1 Month  
Free Rent!  
w/3-Year  
Lease**

**~ ONLY 1 UNIT REMAINING! ~**

Click to View  
Property Video



- **AVAILABLE:** 3,600 SF with 2,100 SF Outdoor Storage Yard
- **LEASE RATE:** \$16.50 / SF Net
- **CAM:** \$3.50 / SF

### PROPERTY FEATURES

- Available Immediately!
- 3,600 SF of Flex Space with 2,100 SF Outdoor Storage Yard
- 18' Clear Height
- Two (2) 14' in Front & Two (2) 10' in Rear Grade-Level Doors Per Unit
- Located in Plantation Corporate Park, Which is a Controlled Industrial Park
- Zoned IL ([click here for uses](#))



Please Contact:

**Colton Brausen**  
Vice President

**239.210.7608**

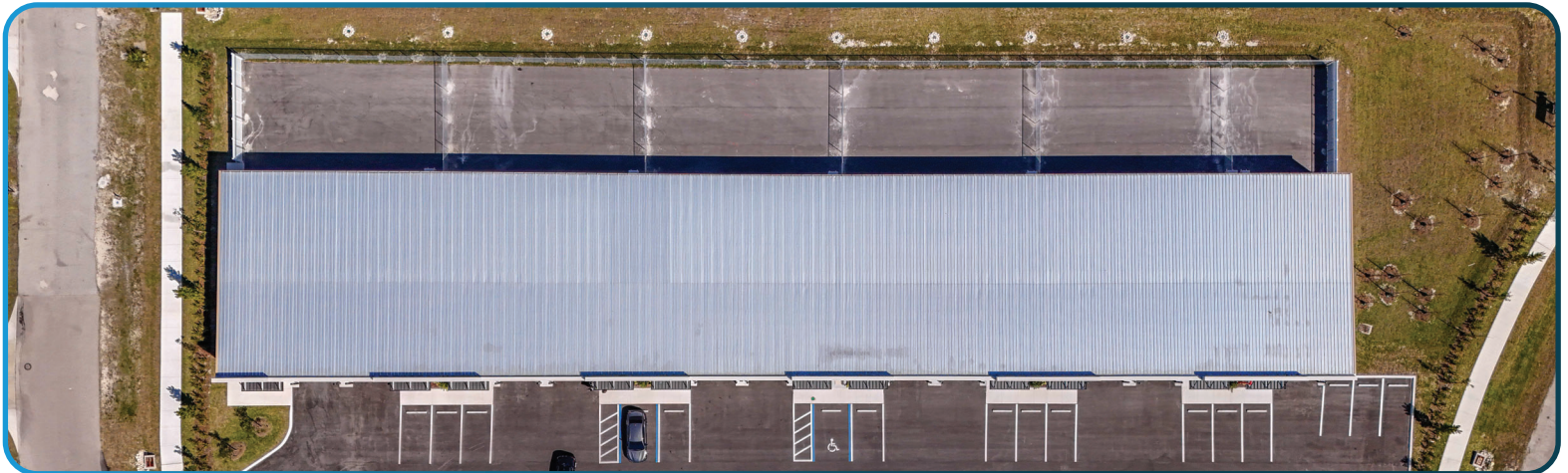
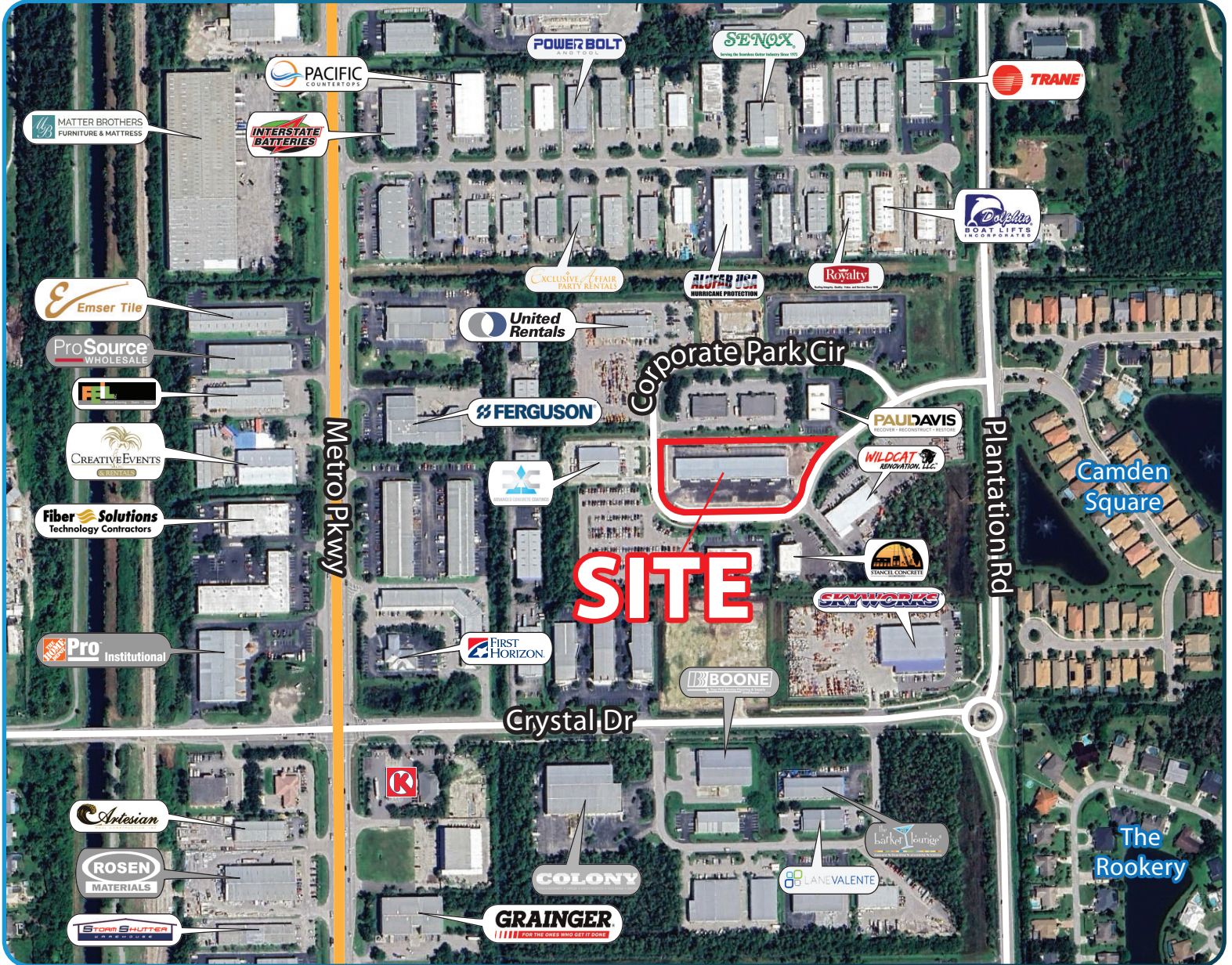
cbrausen@lee-associates.com

All information furnished regarding property for sale, rental or financing is from sources deemed reliable, but no warranty or representation is made to the accuracy thereof and same is subject to errors, omissions, change of price, or other conditions prior to sale, lease or financing or withdrawal without notice. No liability of any kind is to be imposed on the broker herein.

# FOR LEASE

## 19,800 SF INDUSTRIAL FLEX BUILDING

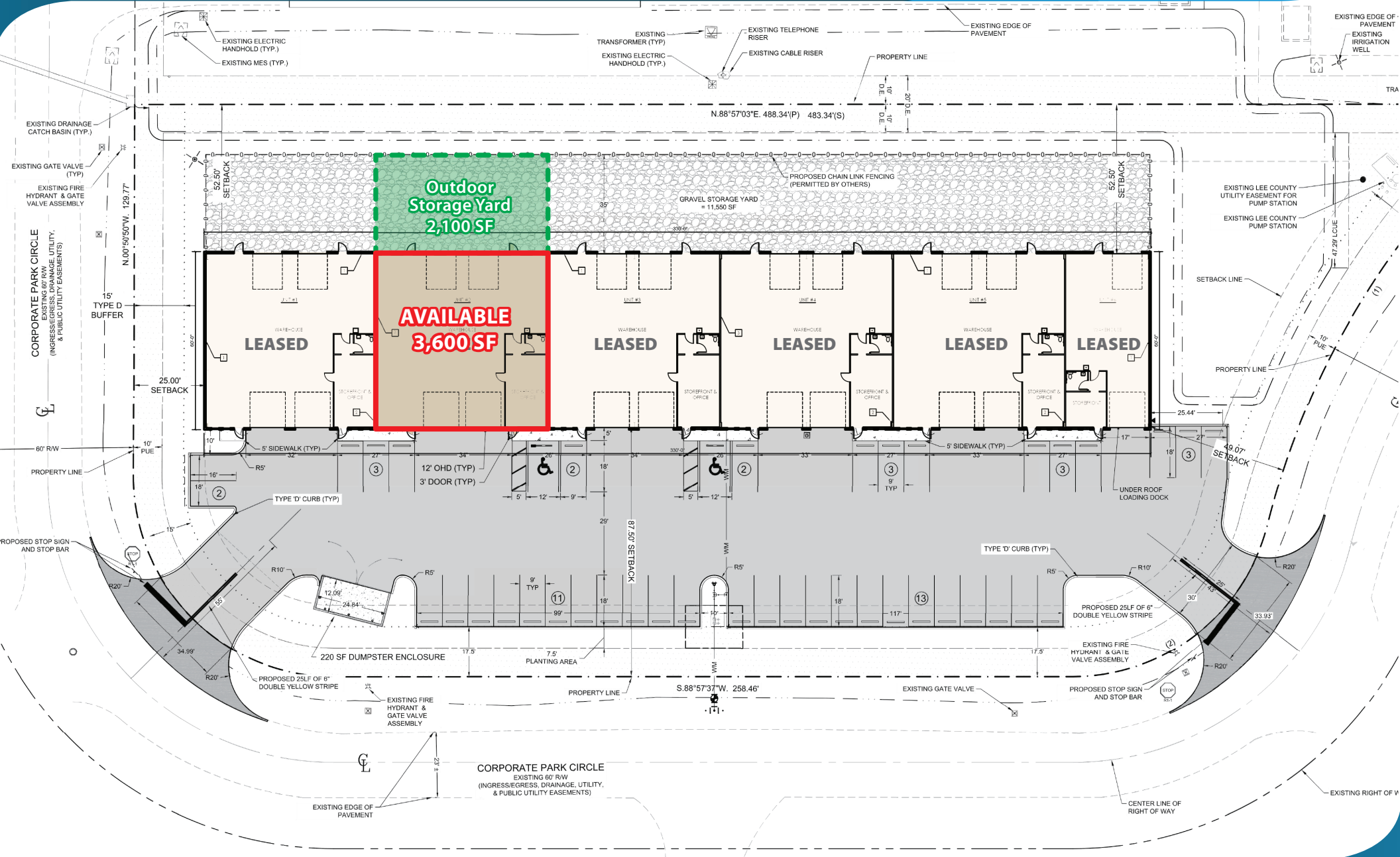
6551 CORPORATE PARK CIRCLE, FORT MYERS, FL 33966



# FOR LEASE

## 19,800 SF INDUSTRIAL FLEX BUILDING

6551 CORPORATE PARK CIRCLE, FORT MYERS, FL 33966



# FOR LEASE

## 19,800 SF INDUSTRIAL FLEX BUILDING

6551 CORPORATE PARK CIRCLE, FORT MYERS, FL 33966

**LEE & ASSOCIATES**  
COMMERCIAL REAL ESTATE SERVICES



YOUR LOCAL MARKET **EXPERT**  
9979 Gulf Logistics Drive, Suite 210 | Fort Myers, Florida 33913 | Lee-FL.com

X @ in f

# FOR LEASE

## 19,800 SF INDUSTRIAL FLEX BUILDING

6551 CORPORATE PARK CIRCLE, FORT MYERS, FL 33966



YOUR LOCAL MARKET **EXPERT**

9979 Gulf Logistics Drive, Suite 210 | Fort Myers, Florida 33913 | Lee-FL.com