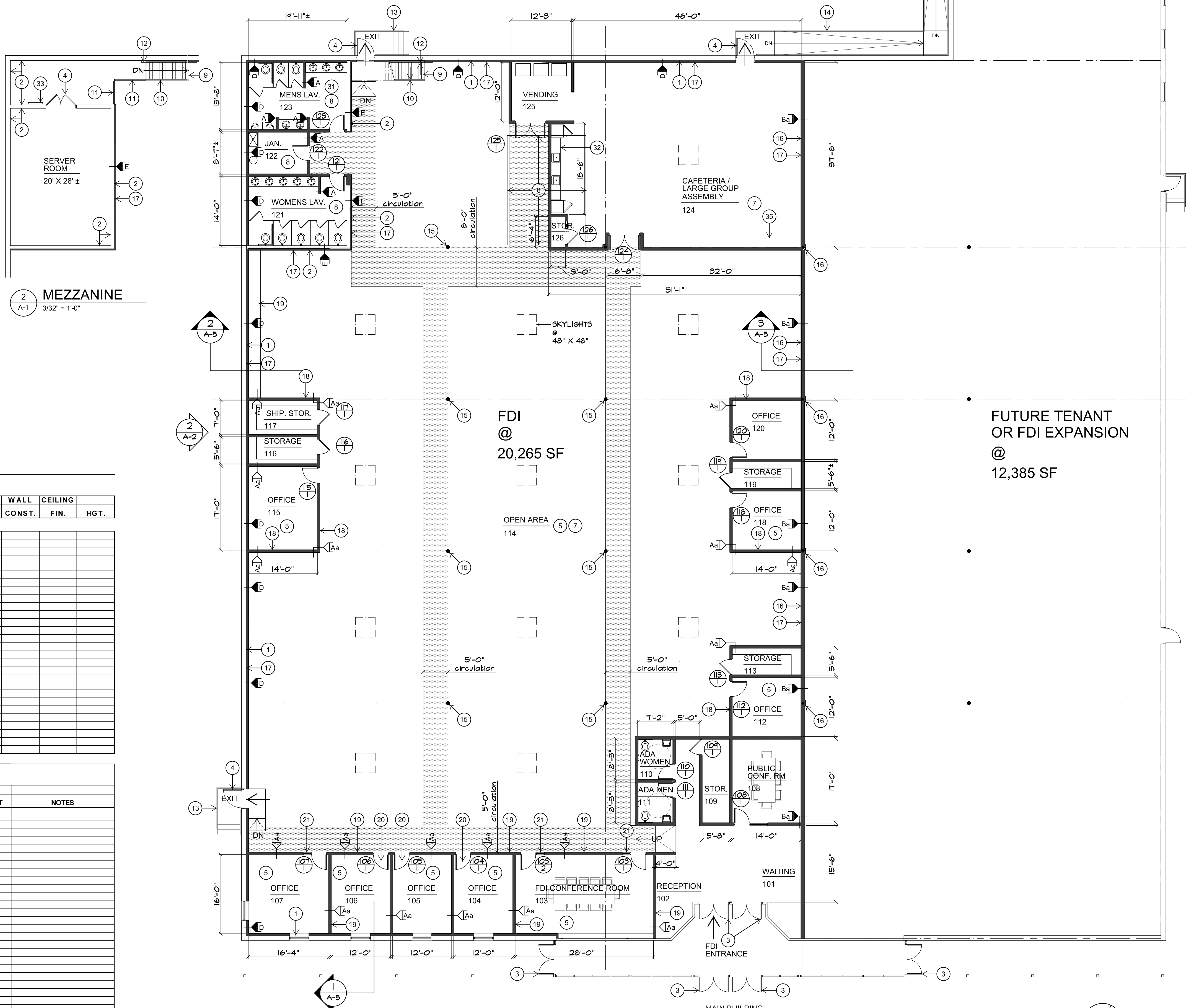


**KEYED NOTES**

- 1 EXIST. EXTERIOR WALLS TO REMAIN, PREP TO RECEIVE NEW MET. STUD FURRINS, INSULATION & GNB
- 2 EXIST. CMU WALLS TO REMAIN; REMOVE ANY OBSTRUCTIONS & PREP TO RECEIVE NEW FINISHES ( TYP. )
- 3 EXIST. ENTRY DOORS TO REMAIN, FIELD VERIFY CONDITION FOR REUSE
- 4 EXIST. DOORS TO REMAIN, FIELD VERIFY CONDITION FOR REUSE
- 5 EXIST. CONC. FLOOR TO REMAIN, REMOVE ANY OBSTRUCTIONS FROM DEMO WORK AND PREP FOR NEW RAISED FLOOR SYSTEM
- 6 EXIST. 4" RECESS @ CONC. FLOOR TO BE INFILLED W/ CONC. TO MATCH ADJACENT FLOOR
- 7 EXIST. MET. DECK & BAR JOISTS ABOVE TO REMAIN, REMOVE ANY UNUSED CONDUIT, WIRING & PIPING FROM STRUCTURE & PREP FOR NEW PAINT FINISH
- 8 EXIST. MET. DECK & BAR JOISTS ABOVE TO REMAIN, REMOVE ANY UNUSED CONDUIT, WIRING & PIPING FROM STRUCTURE & PREP FOR NEW CEILING SYSTEM
- 9 EXISTING METAL STAIRS TO REMAIN, PREP TO RECEIVE NEW PAINT, UPGRADE STAIR W/ 4" PLATE @ OPEN RISER ( TO MEET PREVAILING CODES )
- 10 EXIST. HANDRAIL @ METAL STAIRS TO REMAIN, UPGRADE TO MEET PREVAILING CODES; 36" HANDRAIL HGT., 42" GUARD HGT. & EXPANDED WIRE MESH PANELS BETWEEN UPRIGHTS
- 11 EXIST. GUARDRAIL @ MEZZANINE TO REMAIN, UPGRADE TO MEET PREVAILING CODES 42" GUARD HGT. & EXPANDED WIRE MESH PANELS BETWEEN UPRIGHTS; RAIL TO BE RE-SECURED @ EXIST. LOCATION
- 12 NEW 1-1/2" WALL MTD. MET. HANDRAIL W/ TOP & BOTTOM HANDRAIL EXTENSIONS; MTD. @ 36" ABOVE STAIR NOSING ( TO MEET PREVAILING CODES )
- 13 EXISTING EXTERIOR CONC. STEPS, LANDING & RAILING TO REMAIN; H.M. RAILING TO BE SCRAPED, SANDED & PAINTED
- 14 EXISTING EXTERIOR CONC. RAMP & RAILING TO REMAIN; H.M. RAILING TO BE SCRAPED, SANDED & PAINTED
- 15 EXISTING COLUMNS TO REMAIN; NEW COL. WRAP UP TO 12'-0" A.F.F. (SCRAPE SAND & PAINT REMAINDER OF COL. ABOVE)
- 16 LINE OF NEW DEMISING WALL TO SEPARATE TENANTS; SEE COL. DETAIL 5/A-4
- 17 NEW FULL HGT. WALL ( TYP. ) - SEE WALL TYPE DWS. A-4
- 18 NEW PARTIAL HGT. WALL ( TYP. ) - SEE WALL TYPE DWS. A-4 ( T/WALL @ 14'-0" A.F.F. )
- 19 NEW SHIPPING COUNTER, 30 DEEP (SEE DETAILS DWS. )
- 20 NEW DOOR & FRAME ( TYP. ) - SEE DOOR & FRAME TYPES TYPE DWS. A-4
- 21 NEW DOOR & SIDELITE ( TYP. ) - SEE DOOR & FRAME TYPES TYPE DWS. A-4
- 22 NEW RAISED FLOOR SYSTEM (2-1/2" HIGH) FOR POWER & DATA ACCESS SE DWS. SUPPLIED BY PROVIDER
- 23 NEW RAMP FROM RAISED FLOOR SYSTEM
- 24 NEW ADA UNISEX LAV; SEE ENLARGED PLAN 2/A-3 & INTERIOR ELEVATIONS 4/A-3 & 10/A-3
- 25 NEW MEN'S LAV; SEE ENLARGED PLAN 1/A-3 & INTERIOR ELEVATIONS 4/A-3 & 5/A-3
- 26 NEW WOMEN'S LAV; SEE ENLARGED PLAN 1/A-3 & INTERIOR ELEVATIONS 6/A-3 & 7/A-3
- 27 MUSTEE MOP SERVICE BASIN W/ MOEN 8124 WALL FAUCET, BUMPER GUARD, HOSE, BRACKET & MOP RACK
- 28 40 GAL. QUICK RECOVERY ELEC. WATER HEATER PLACED IN METAL OVERFLOW PAN
- 29 NEW M.O. SEE STRUCTURAL DWS. FOR NEW LINTEL
- 30 NEW STRUCTURAL SUPPORT FOR EXG. MET. DECK & CONC. SLAB ABOVE, SEE STRUCT. DWS. FOR DETAILS
- 31 NEW STRUCTURAL SUPPORT FOR EXG. CMU WALL ABOVE; SEE STRUCT. DWS. FOR DETAILS
- 32 KITCHENETTE; SEE ENLARGED PLAN 3/A-3 & INTERIOR ELEVATIONS 8/A-3
- 33 EXIST. ROOF ACCESS LADDER TO REMAIN
- 34 WALL MTD. WATER COOLER HI-LO BARRIER FREE ADA COMPLIANT; ELKAY VRCHDTL88C
- 35 NEW SOLID SURFACE STAND-UP COUNTER; 24" DEEP (SEE DETAILS DWS. )



1 FLOOR PLAN - FDI 20,000 SF  
A-1 3/32" = 1'-0"

**Finish Schedule**

RM. #	ROOM NAME	FLOOR	MAT'L	BASE	NORTH FIN.	WALL CONST.	EAST FIN.	WALL CONST.	SOUTH FIN.	WALL CONST.	WEST FIN.	WALL CONST.	CEILING	HGT.
<b>FIRST FLOOR</b>														
101	WAITING													
102	RECEPTION													
103	FDI CONFERENCE RM													
104	OFFICE													
105	OFFICE													
106	OFFICE													
107	OFFICE													
108	PUBLIC CONFERENCE RM													
109	STORAGE													
110	ADA WOMENS													
111	ADA MENS													
112	OFFICE													
113	STORAGE													
114	OPEN AREA													
115	OFFICE													
116	STORAGE													
117	SHIPPING STORAGE													
118	OFFICE													
119	STORAGE													
120	OFFICE													
121	WOMEN'S LAV													
122	JANITOR													
123	MEN'S LAV													
124	CAFETERIA / LARGE ASSEMBLY													
125	VENDING													
126	STORAGE													

**Door Schedule**

NO.	NOMINAL DOOR SIZE	DOOR		FRAME				DETAILS			HDW		NOTES	
		MAT'L	FIN.	MAT'L	FIN.	ELEV.	HEAD	JAMB	JAMB	SILL	SET			
<b>FIRST FLOOR</b>														
103/1	3'-0" X 7'-0" X 1-3/4"													
103/2	3'-0" X 7'-0" X 1-3/4"													
104/1	3'-0" X 7'-0" X 1-3/4"													
105/1	3'-0" X 7'-0" X 1-3/4"													
106/1	3'-0" X 7'-0" X 1-3/4"													
107/1	3'-0" X 7'-0" X 1-3/4"													
108/1	3'-0" X 7'-0" X 1-3/4"													
109/1	3'-0" X 7'-0" X 1-3/4"													
110/1	3'-0" X 7'-0" X 1-3/4"													
111/1	3'-0" X 7'-0" X 1-3/4"													
112/1	3'-0" X 7'-0" X 1-3/4"													
113/1	3'-0" X 7'-0" X 1-3/4"													
115/1	3'-0" X 7'-0" X 1-3/4"													
116/1	3'-0" X 7'-0" X 1-3/4"													
117/1	3'-0" X 7'-0" X 1-3/4"													
118/1	3'-0" X 7'-0" X 1-3/4"													
119/1	3'-0" X 7'-0" X 1-3/4"													
120/1	3'-0" X 7'-0" X 1-3/4"													
121/1	3'-0" X 7'-0" X 1-3/4"													
122/1	3'-0" X 7'-0" X 1-3/4"													
123/1	3'-0" X 7'-0" X 1-3/4"													
124/1	(PR) 3'-0" X 7'-0" X 1-3/4"													
126/1	3'-0" X 7'-0" X 1-3/4"													

ISSUED: January 20, 2014  
REV. DATE

**kudravy architects, llc**  
218 W. Epler Ave., Suite 200  
West Chester, PA 19380  
Architecture • Planning • Interiors  
Engineering • Construction Management  
412 / 462-7818  
www.kudravy.com

New Corporate Offices for  
**Financial Dimensions, Inc. (FDI)**  
7025 Clairton Road  
West Mifflin, PA 15122

First Floor Plan, Coded Notes &  
Schedules

**A-1**  
13-519  
© KA 2013