



# SPACE AVAILABLE FOR LEASE



1630 Tropic Park  
Drive, Sanford, FL  
32773

Rates:

**\$2,000/Month**  
Modified Gross



ALPHA  
EQUITY  
REALTY & MANAGEMENT

## PROPERTY HIGHLIGHTS:

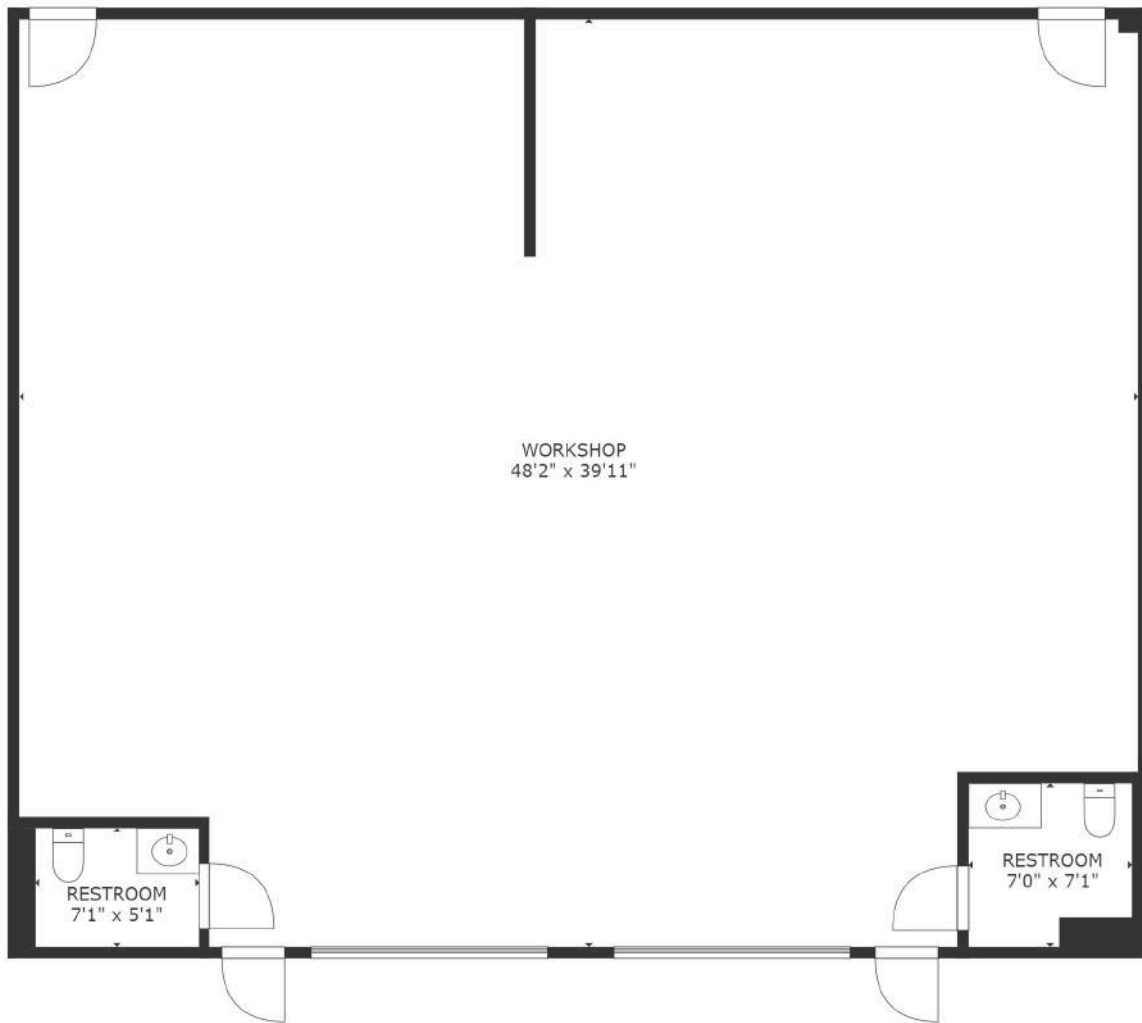
- Alpha Prime Location - Highways & Public Transport
- Alpha Full Service - WiFi, Electric & Water Included
- Alpha Upgraded Restrooms with Granite
- Alpha Bright Private Professional Offices
- Alpha High Visibility Signage Available



Mac Jaffer: [516-554-5775](tel:516-554-5775)  
Tati K: [407-668-8534](tel:407-668-8534)  
[leasing@alphaacq.com](mailto:leasing@alphaacq.com)

1630 Tropic Park Drive, Sanford,  
FL 32773

Alpha Equity does not represent or warranty the accuracy of the information contained herein. Such information has been given to Alpha Equity by the owner of the property or obtained from other sources deemed reliable. Alpha Equity has no reason to doubt its accuracy, but does not guarantee it. The reviewers(s) of this document is encouraged to perform their own research for their own purposes to verify the dependability of the information being reviewed. All information should be verified by reviewer(s) prior to purchase or lease.  
Unless otherwise noted, the property is being offered as-is, where is, with all faults.



[Virtual Tour](#)



[Watch Video](#)

Mac Jaffer: [516-554-5775](tel:516-554-5775)  
Tati K: [407-668-8534](tel:407-668-8534)  
[leasing@alphaacq.com](mailto:leasing@alphaacq.com)

1630 Tropic Park Drive, Sanford,  
FL 32773

**CONTACT**



**1630 Tropic Park Drive,  
Sanford, FL 32773**



**Alpha Equity Realty & Management  
1485 International Parkway #2001  
Lake Mary, FL 32746  
[www.recfl.com](http://www.recfl.com)**



**MAC JAFFER  
516-554-5775**

**TATI K  
407-668-8534**

**[leasing@alphaacq.com](mailto:leasing@alphaacq.com)**