



ARES  
INDUSTRIAL  
MANAGEMENT

# FONTANA LOGISTICS CENTER

10855 CHERRY AVENUE, FONTANA, CA

FOR LEASE | ±193,368 SQ FT | Class A Warehouse Facility



**Voit**  
REAL ESTATE SERVICES

**JUAN GUTIERREZ, SIOR**

Executive Vice President, Partner  
jgutierrez@voitco.com  
909-545-8008 | Lic. # 01777990

**SHY ASSAR, MBA, MRED**

Senior Vice President, Partner  
sassar@voitco.com  
909-545-8091 | Lic. # 01964667

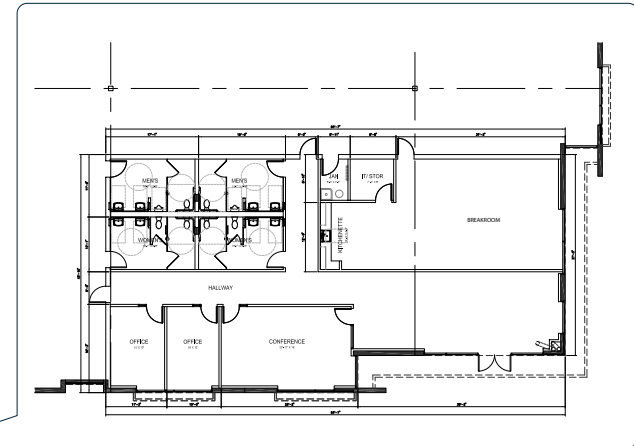
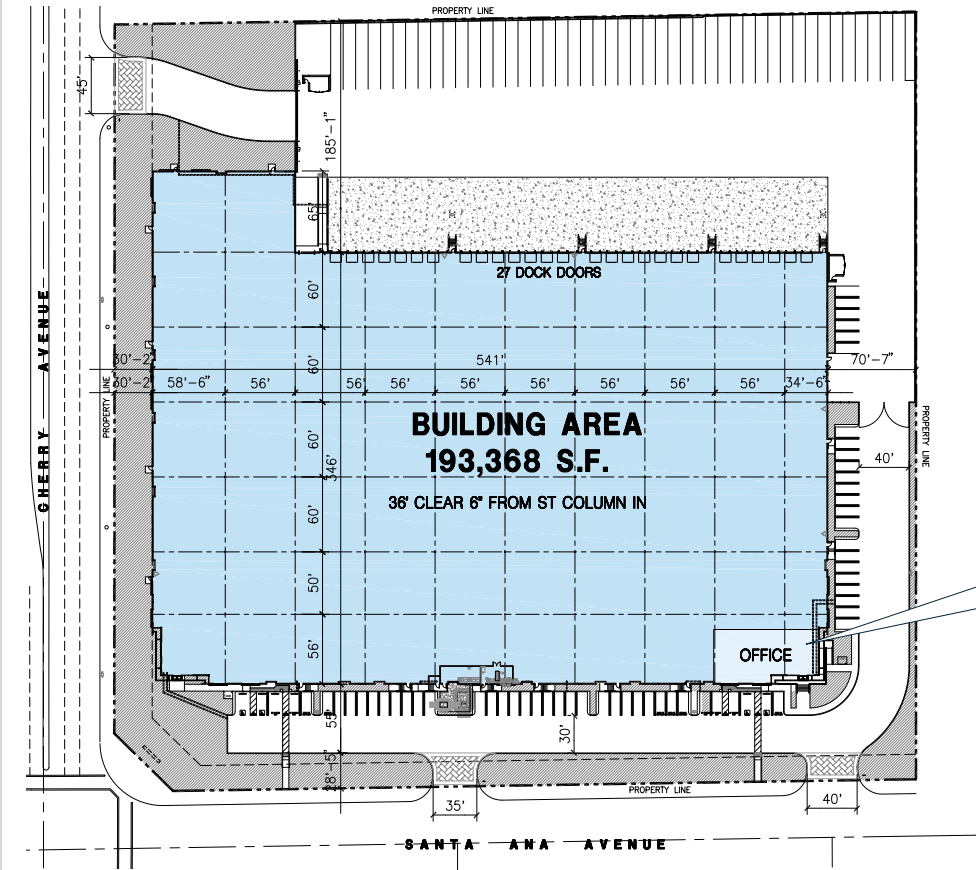
**IAN OZIMEC, CCIM**

Senior Associate  
iozimec@voitco.com  
909-545-8001 | Lic. # 02040261

# Property FEATURES

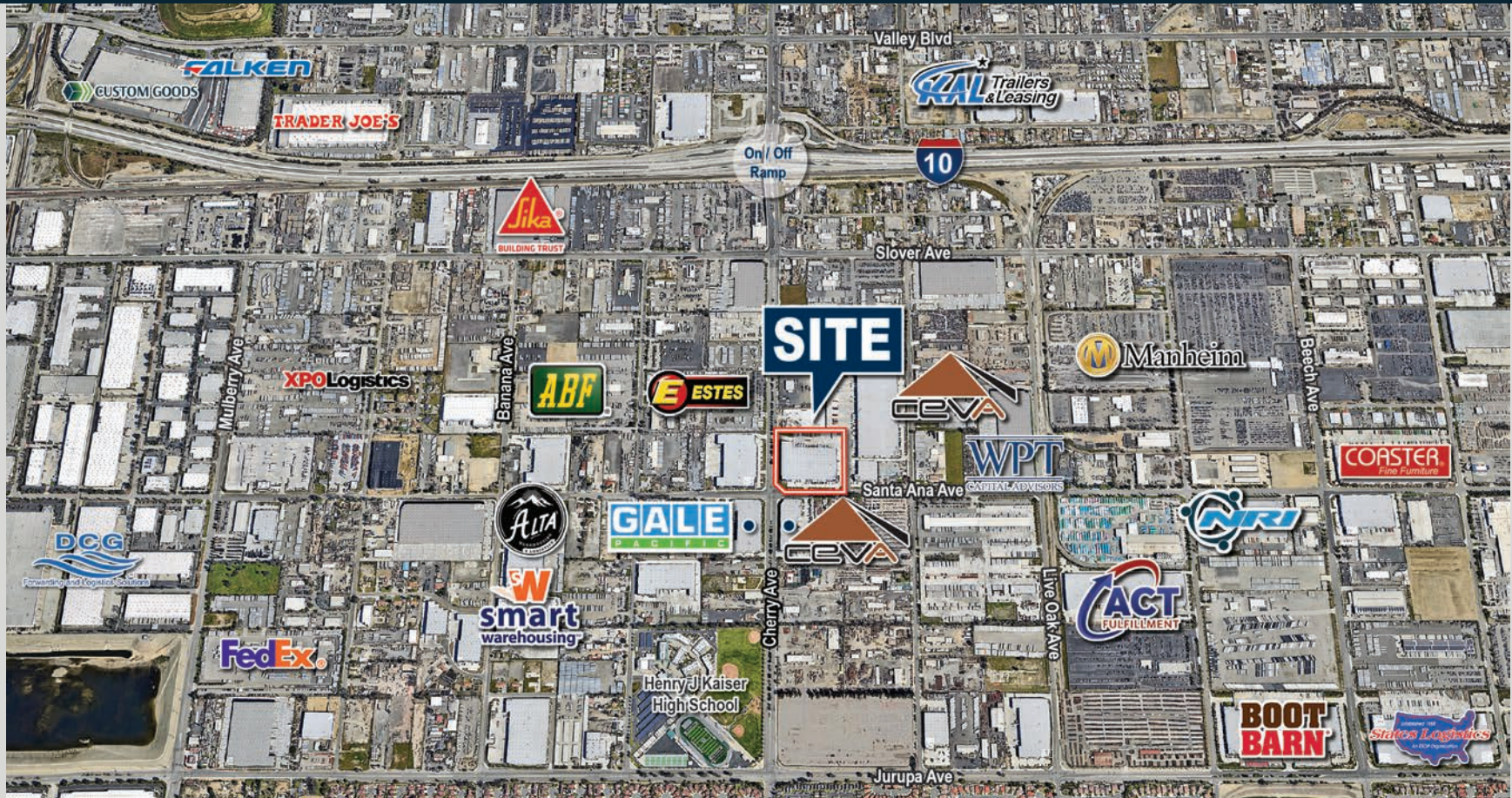
- ±193,368 SF Building
- ±3,351 SF Office
- 36' Clear Height
- ESFR Sprinkler System
- 27 (9' x 10') Dock High Doors  
(Levelers on Every Other Door)
- 2 (12' x 14') Ground Level Doors

- Six (6) Forklift Charging Stations
- 1,200 Amps, Expandable to 2,000 Amps (verify)
- 62 Auto Parking Stalls
- 46 Trailer Storage Spaces
- Secured Private Yard
- LED Warehouse Lighting



# Location HIGHLIGHTS

- 15.6 miles to I-215 Freeway
- 4.0 miles to I-15 Freeway
- 9.8 miles to I-210 Freeway
- 12.8 miles to BNSF Intermodal Yard
- 6.4 miles to Ontario International Airport
- 8.0 miles to UPS Hub
- 7.7 miles to FedEx Hub
- Corporate Neighbors Include Amazon, Walmart, FedEx, UPS and Trader Joe's



## ABOUT ARES MANAGEMENT CORPORATION

Ares Management Corporation (NYSE: ARES) is a leading global alternative investment manager offering clients complementary primary and secondary investment solutions across the credit, private equity, real estate and infrastructure asset classes. We seek to provide flexible capital to support businesses and create value for our stakeholders and within our communities. By collaborating across our investment groups, we aim to generate consistent and attractive investment returns throughout market cycles. For more information, please visit [www.aresmgmt.com](http://www.aresmgmt.com).



**ARES  
INDUSTRIAL  
MANAGEMENT**



**Voit**

REAL ESTATE SERVICES

3280 E. Guasti Road, Suite 100  
Ontario, CA 91761 | 909-545-8000

### **JUAN GUTIERREZ, SIOR**

Executive Vice President, Partner  
[jgutierrez@voitco.com](mailto:jgutierrez@voitco.com)  
909-545-8008 | Lic. # 01777990

### **SHY ASSAR, MBA, MRED**

Senior Vice President, Partner  
[sassar@voitco.com](mailto:sassar@voitco.com)  
909-545-8091 | Lic. # 01964667

### **IAN OZIMEC, CCIM**

Senior Associate  
[iozimec@voitco.com](mailto:iozimec@voitco.com)  
909-545-8001 | Lic. # 02040261

The information contained herein has been obtained from sources we deem reliable. While we have no reason to doubt its accuracy, we do not guarantee it. Licensed as Real Estate Salespersons by the DRE. ©2025 Voit Real Estate Services, Inc. All Rights Reserved. License #01991785.