

1923

9TH STREET

2ND GEN RETAIL
AVAILABLE NOW

AVAILABILITY

GROUND LEVEL: 2,000 SF

LOWER LEVEL: 2,000 SF

Located in the heart of Shaw, DC's go-to neighborhood for vibrant nightlife, top-tier dining, and a buzzing social scene. Once a historic hub of Black culture, it now thrives with trendy bars, live music venues, and late-night hotspots along 9th and U Street. Blending historic charm with modern energy.

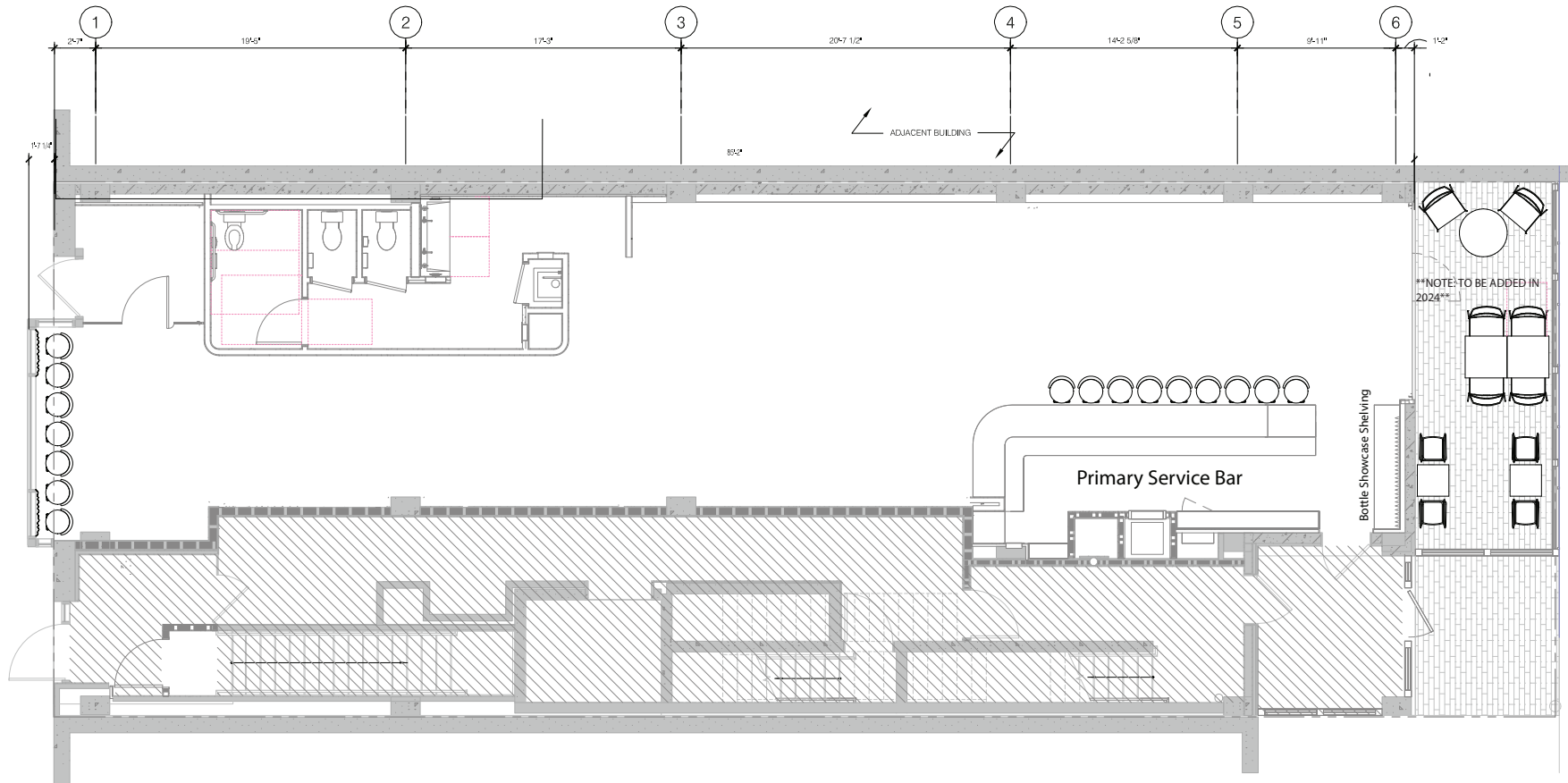
WASHINGTON, DC 20001



1923

9TH STREET

WASHINGTON, DC 20001



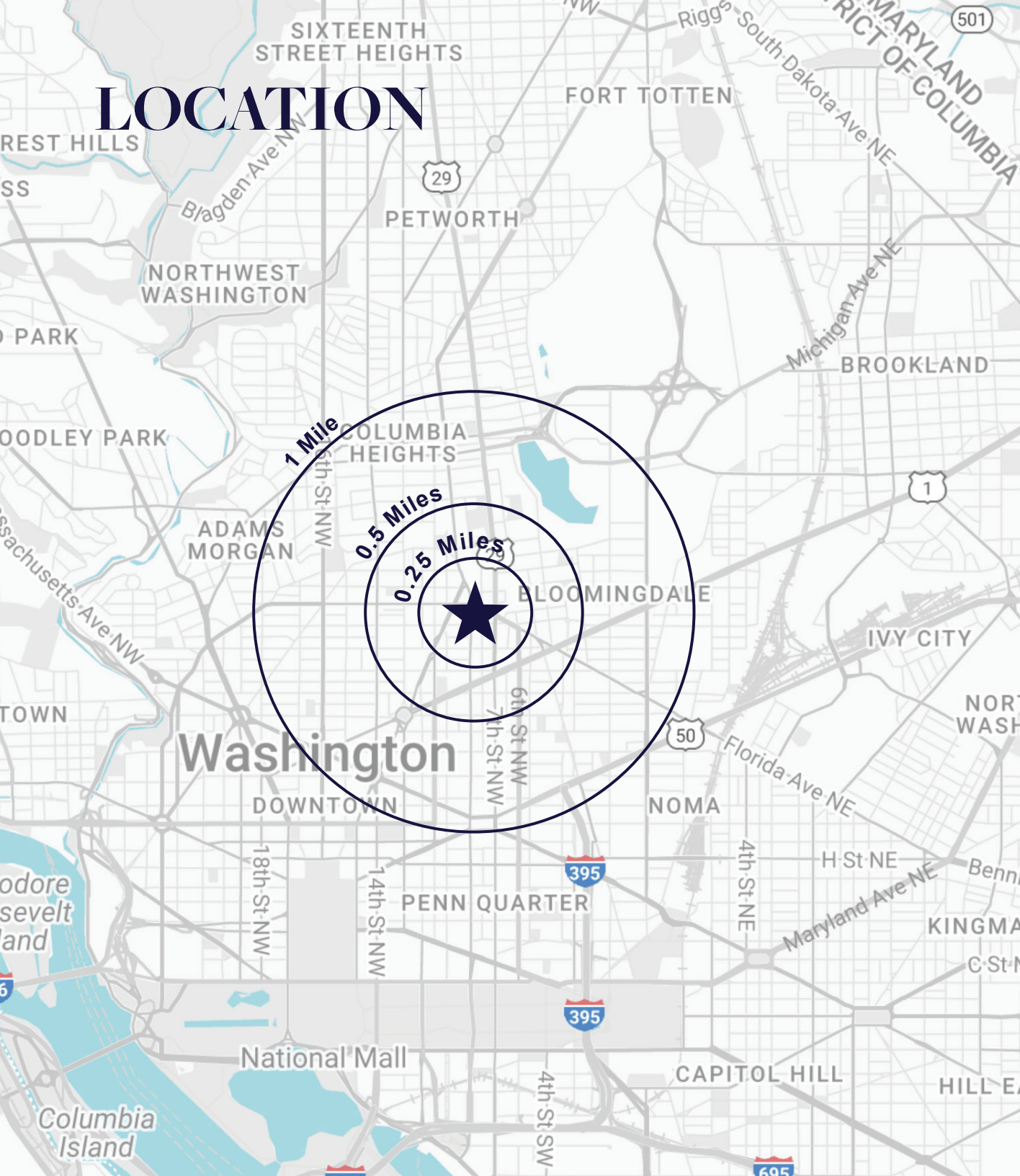
CONTACT

Sophie Van Pelt
+1 202 471 3597
Sophie.VanPelt@cushwake.com

Laura Intoccia
+1 301 922 8315
Laura.Intoccia@cushwake.com





2101 L Street NW
Suite 500
Washington, DC 20037
cushmanwakefield.com

LOCATION



1923
9TH STREET

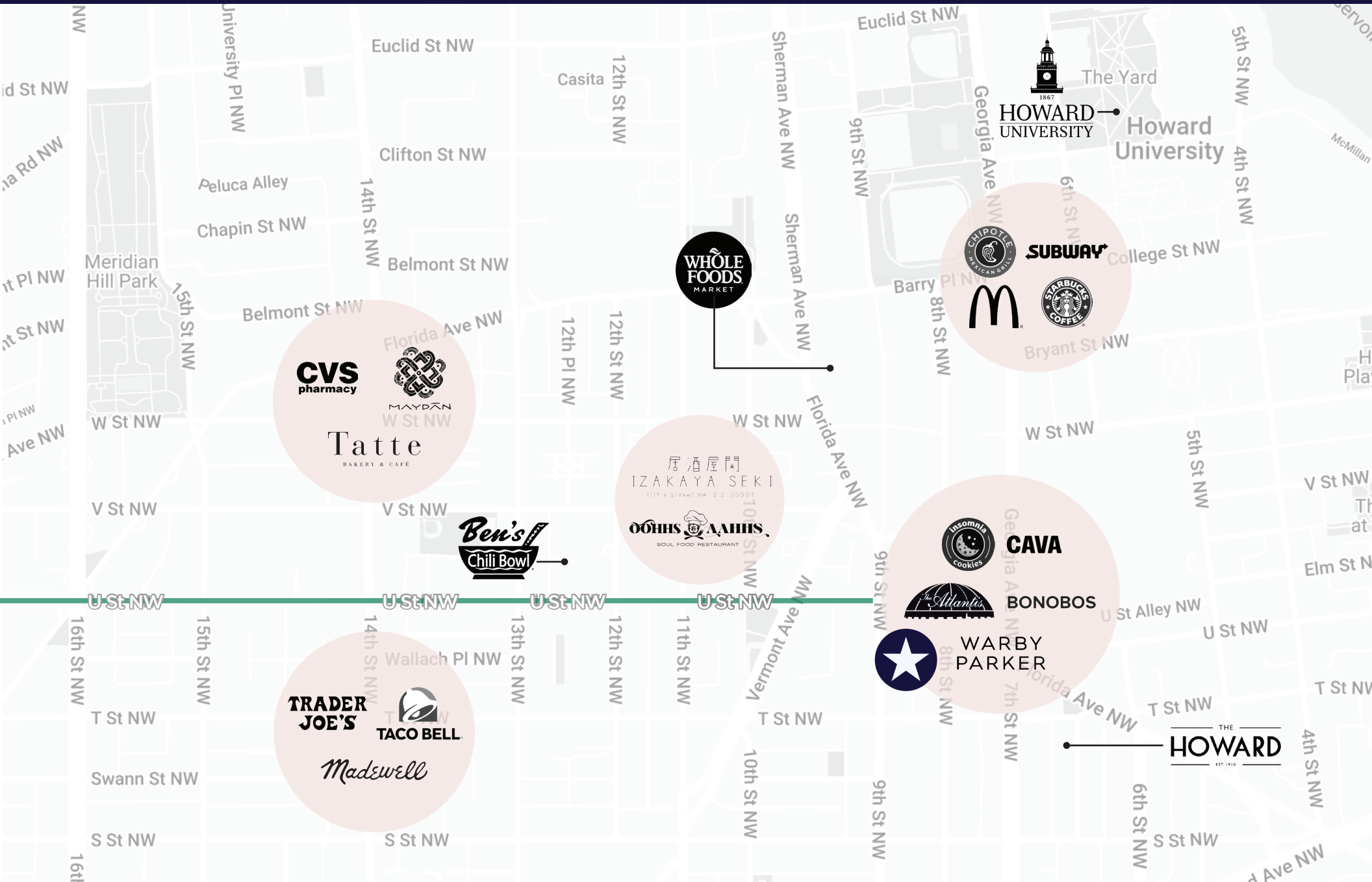
DEMOGRAPHICS

-  **AVERAGE HOUSEHOLD INCOME**
 - \$195,300 - 0.25 Miles
 - \$204,434 - 0.5 Miles
 - \$177,789 - 1 Mile
-  **MEDIAN AGE**
 - 30.5 - 0.25 Miles
 - 31.8 - 0.5 Miles
 - 34.4 - 1 Mile
-  **HOUSEHOLDS**
 - 2,565 - 0.25 Miles
 - 9,402 - 0.5 Miles
 - 50,201 - 1 Mile
-  **POPULATION**
 - 6,284 - 0.25 Miles
 - 21,151 - 0.5 Miles
 - 97,326 - 1 Mile

1923

9TH STREET

THE NEIGHBORHOOD



1923

9TH STREET

CONTACT

Sophie Van Pelt

+1 202 471 3597

Sophie.VanPelt@cushwake.com

Laura Intoccia

+1 301 922 8315

Laura.Intoccia@cushwake.com

2101 L Street NW

Suite 500

Washington, DC 20037

©2025 Cushman & Wakefield. All rights reserved. The information contained in this communication is strictly confidential. This information has been obtained from sources believed to be reliable but has not been verified. NO WARRANTY OR REPRESENTATION, EXPRESS OR IMPLIED, IS MADE AS TO THE CONDITION OF THE PROPERTY (OR PROPERTIES) REFERENCED HEREIN OR AS TO THE ACCURACY OR COMPLETENESS OF THE INFORMATION CONTAINED HEREIN, AND SAME IS SUBMITTED SUBJECT TO ERRORS, OMISSIONS, CHANGE OF PRICE, RENTAL OR OTHER CONDITIONS, WITHDRAWAL WITHOUT NOTICE, AND TO ANY SPECIAL LISTING CONDITIONS IMPOSED BY THE PROPERTY OWNER(S). ANY PROJECTIONS, OPINIONS OR ESTIMATES ARE SUBJECT TO UNCERTAINTY AND DO NOT SIGNIFY CURRENT OR FUTURE PROPERTY PERFORMANCE.

