

# FOR SUBLEASE

## 10696 OLD SAINT AUGUSTINE ROAD



2929 Plummer Cove Rd., Suite 2  
Jacksonville, FL 32223

Jacksonville, FL 32257



### OFFERING SUMMARY

Lease Rate:	\$18.00 SF/yr (Full Service)
Available SF:	5,669 SF

### PROPERTY OVERVIEW

Offering medical space available for sublease through March 2032. There is approximately 5,669 SF of medical space available which is currently being used as an imaging center. This property is located in the heart of Mandarin with close proximity to I-295.

### PROPERTY HIGHLIGHTS

- Versatile office spaces
- Modern amenities
- Professional environment
- Ample parking
- Strategic location
- Sleek lobby
- Well-appointed interiors
- Bright, spacious layouts

#### PRESENTED BY:

**ROCHELLE PIERSALL**  
904.599.3480  
rochelle@kinkadecommercial.com

**AMANDA KINKADE**  
904.635.6376  
amanda@kinkadecommercial.com

EXECUTIVE SUMMARY

# FOR SUBLEASE

## 10696 OLD SAINT AUGUSTINE ROAD



2929 Plummer Cove Rd., Suite 2  
Jacksonville, FL 32223

Jacksonville, FL 32257



**PRESENTED BY:**

**ROCHELLE PIERSALL**  
904.599.3480  
rochelle@kinkadecommercial.com

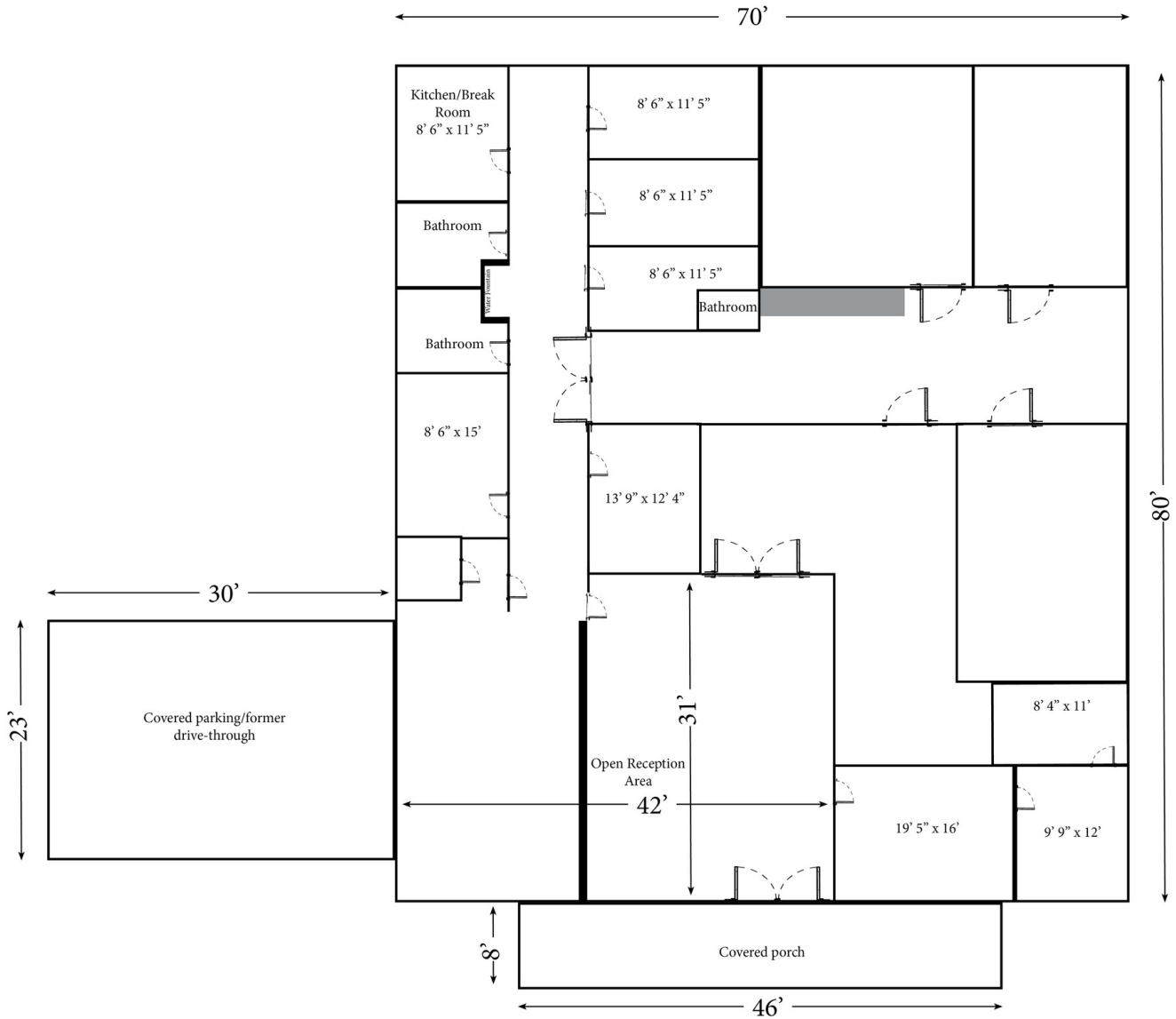
**AMANDA KINKADE**  
904.635.6376  
amanda@kinkadecommercial.com

**ADDITIONAL PHOTOS**

# FOR SUBLEASE

## 10696 OLD SAINT AUGUSTINE ROAD

Jacksonville, FL 32257



PRESENTED BY:

**ROCHELLE PIERSALL**  
904.599.3480  
rochelle@kinkadecommercial.com

**AMANDA KINKADE**  
904.635.6376  
amanda@kinkadecommercial.com

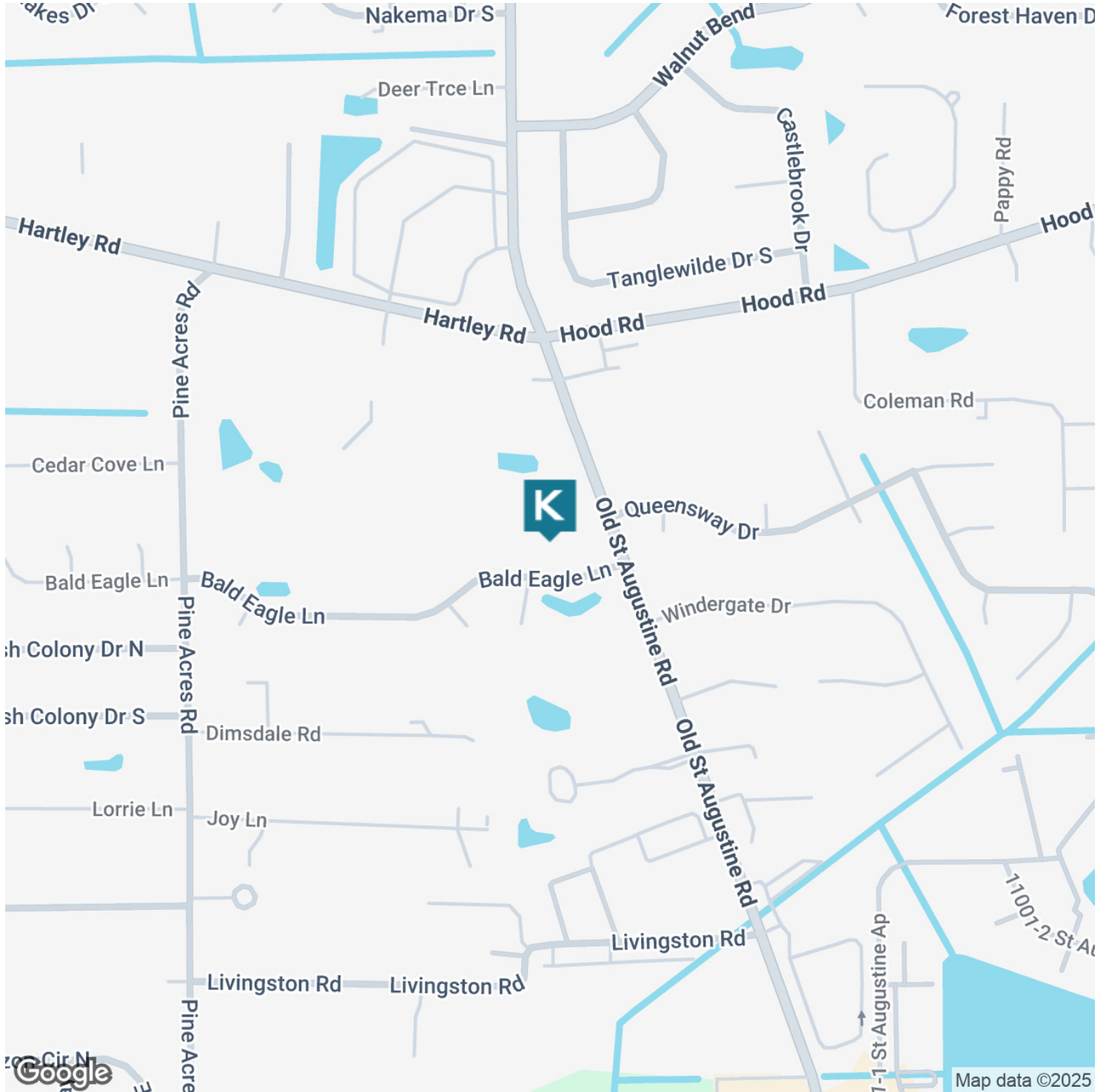
# FOR SUBLEASE

## 10696 OLD SAINT AUGUSTINE ROAD



2929 Plummer Cove Rd., Suite 2  
Jacksonville, FL 32223

Jacksonville, FL 32257



PRESENTED BY:

**ROCHELLE PIERSALL**  
904.599.3480  
rochelle@kinkadecommercial.com

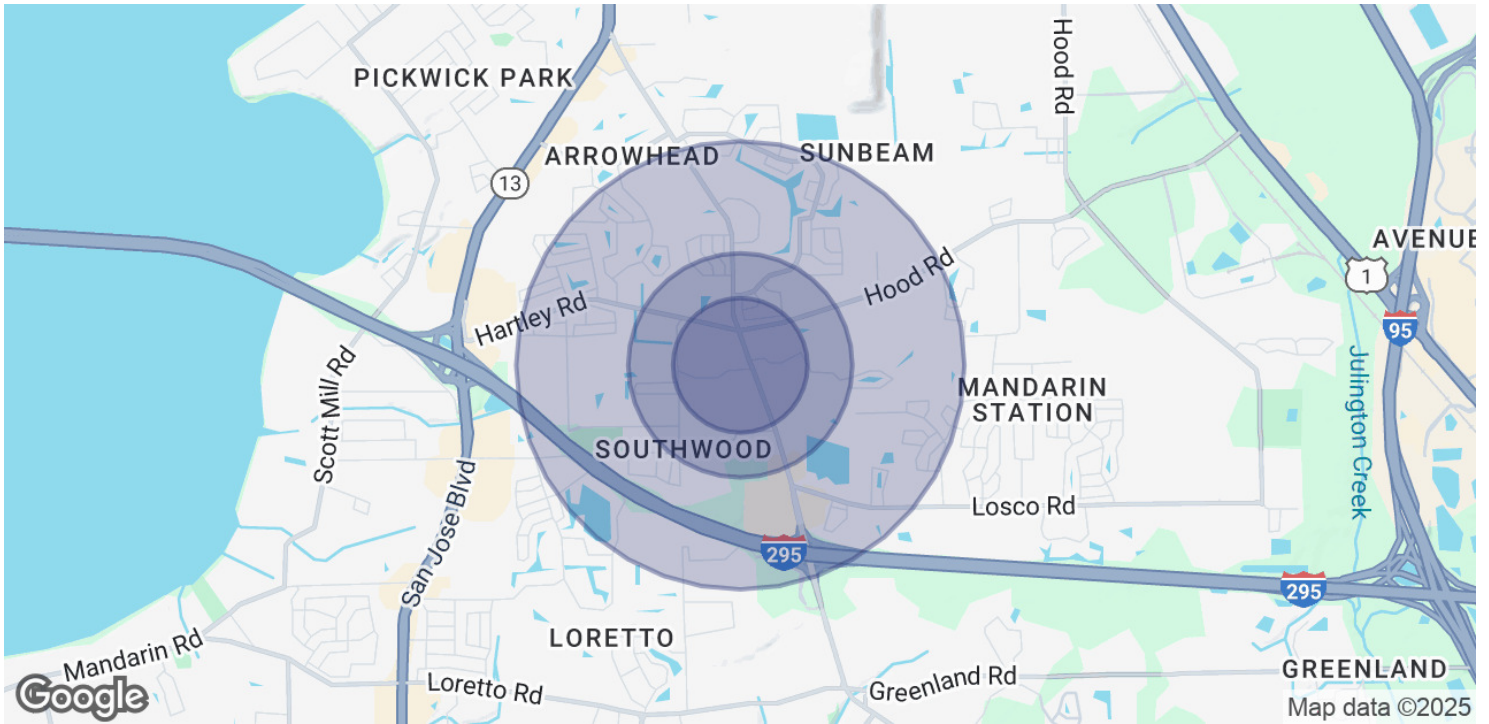
**AMANDA KINKADE**  
904.635.6376  
amanda@kinkadecommercial.com

LOCATION MAP

# FOR SUBLEASE

## 10696 OLD SAINT AUGUSTINE ROAD

Jacksonville, FL 32257



POPULATION	0.3 MILES	0.5 MILES	1 MILE
Total Population	1,046	4,276	15,717
Average Age	47	44	42
Average Age (Male)	43	41	40
Average Age (Female)	50	46	44

HOUSEHOLDS & INCOME	0.3 MILES	0.5 MILES	1 MILE
Total Households	445	1,877	6,881
# of Persons per HH	2.4	2.3	2.3
Average HH Income	\$73,971	\$78,429	\$87,402
Average House Value	\$260,296	\$264,203	\$283,650

Demographics data derived from AlphaMap

**PRESENTED BY:**

**ROCHELLE PIERSALL**  
904.599.3480  
rochelle@kinkadecommercial.com

**AMANDA KINKADE**  
904.635.6376  
amanda@kinkadecommercial.com