

FOR LEASE

Willowbrook Business Centre

Unit 109-110, 19292 60 Avenue, Surrey, BC



This 3,927 square foot warehouse unit has multiple office areas/showroom, a kitchen, 2 washrooms and 2 grade overhead doors. Come join Willowbrook Business Centre today!



DIRECTOR OF REAL ESTATE
Leslie Koole



PROPERTY MANAGER & LEASING AGENT
Hertha Muller

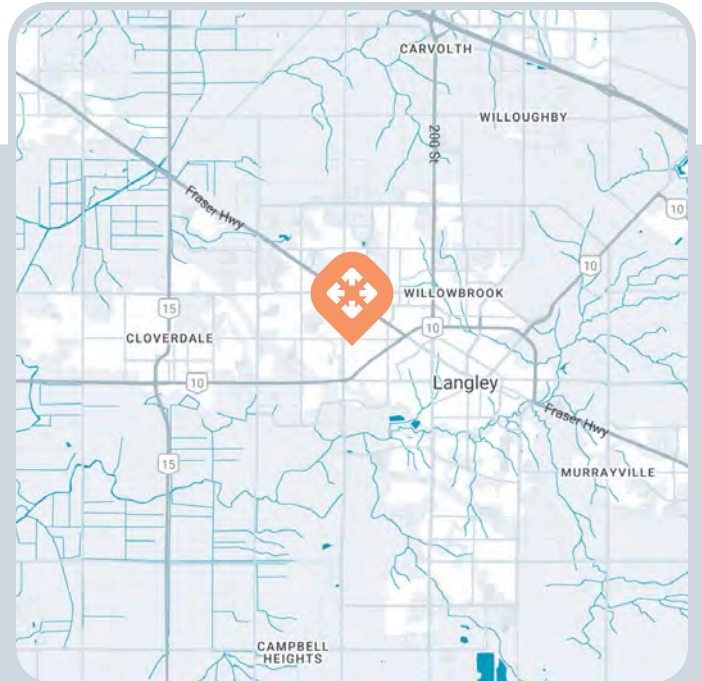
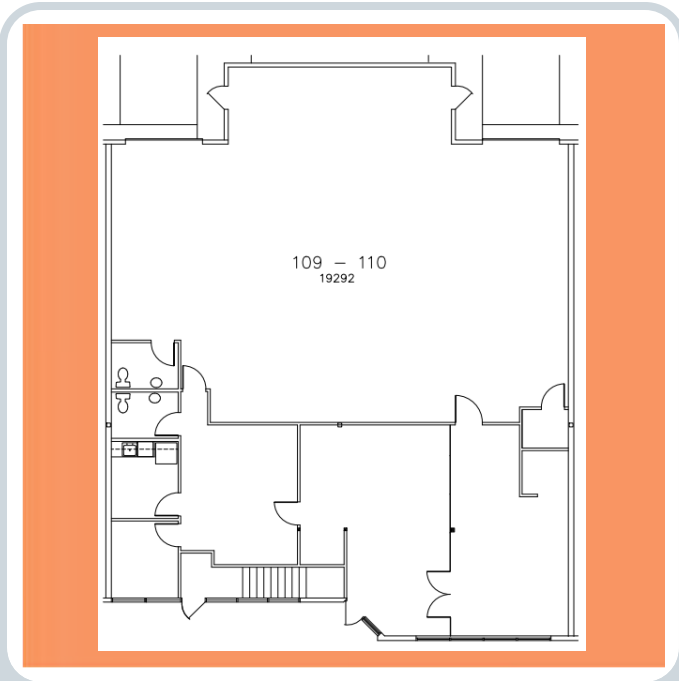


604.533.1138
leasing@benchmark-group.com

Contact our leasing team and let's get you the commercial property experience you deserve.

Willowbrook Business Centre

Unit 109-110, 19292 60 Avenue, Surrey, BC



Unit Size

Warehouse 2,441 sq. ft.
Office 1,486 sq. ft.

Amenities

- Concrete tilt-up design
- 3 phase power
- Overhead heaters in warehouse
- Common garbage compactor
- Site security
- Ample on-site parking
- Excellent property management service by Landlord

Zoning

CD – Comprehensive Development Zone

Location

Situated on the Langley/Surrey border, this well managed complex is within close proximity to many retail amenities of Cloverdale and Langley City. The property offers excellent access to 192nd Street, Highway 15, Highway 10/Langley Bypass, 200th Street and Fraser Hwy.

TAKE YOUR PLACE OF BUSINESS TO THE NEXT LEVEL

Contact our leasing team and let's get you the commercial property experience you deserve.

Lease Rates

Warehouse - \$21.00 psf
Office - \$21.00 psf
Operating Expenses - \$8.38 (2026) psf + 5% PM Fee

604.533.1138

leasing@benchmark-group.com